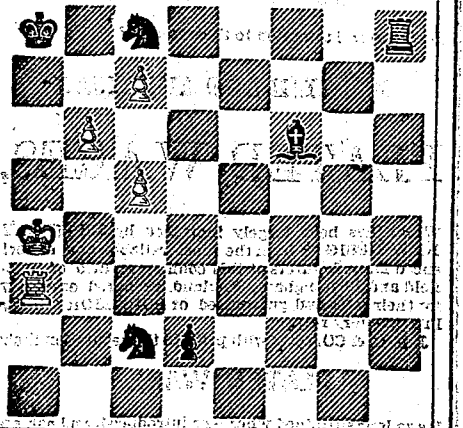


CHESS COLUMN

Answers to Correspondents. "J. A. C. HARRISBURG."—We shall be glad to learn your views on the subject, and we admit that the last game was hardly worthy of publicity. Any statement of yours shall receive attention in the paper.

M. M.—At the latest advances the score stood: Steinitz, 6; Bird, 5; Drawn, 5. Problem No. 465. BY MR. JULIUS BREDE. BLACK.



White to play and mate in seven moves. Solution to No. 464. (Remove Black's King's Bishop's Pawn.)

MR. KRUPP'S SOLUTION. (Moves 1 to 7, as before.)

CHESS IN PHILADELPHIA. Game No. 1522. Between Mr. Sayen, giving the Knight, and Mr. W.

CHESS IN LONDON. Game No. 1524. Eleventh game of the Steinitz-Bird match.

CHESS IN GERMANY. Game No. 1523. Between Messrs. v. d. Lasa and Buckle.

CHESS IN PHILADELPHIA. Game No. 1525. Messrs. Staunton and Owen consult against Messrs. Lowenthal and Horwitz.

CHESS IN PHILADELPHIA. Game No. 1526. Between Mr. Sayen, giving the Knight, and Mr. W.

CHESS IN PHILADELPHIA. Game No. 1527. Between Mr. Sayen, giving the Knight, and Mr. W.

CHESS IN PHILADELPHIA. Game No. 1528. Between Mr. Sayen, giving the Knight, and Mr. W.

CHESS IN PHILADELPHIA. Game No. 1529. Between Mr. Sayen, giving the Knight, and Mr. W.

CHESS IN PHILADELPHIA. Game No. 1530. Between Mr. Sayen, giving the Knight, and Mr. W.

CHESS IN PHILADELPHIA. Game No. 1531. Between Mr. Sayen, giving the Knight, and Mr. W.

CHESS IN PHILADELPHIA. Game No. 1532. Between Mr. Sayen, giving the Knight, and Mr. W.

LUMBER.

F. H. WILLIAMS, LUMBER. Seventeenth and Spring Garden Streets PHILADELPHIA.

HUGH McILVAIN, Building Lumber. 3401 Market Street. CHESTNUT MARKET.

CHARLES ESTE, LUMBER. Seventeenth and Callowhill Streets. PHILADELPHIA.

1866.—SELECT WHITE PINE BOARDS AND PLANK. CHOICE PANEL AND FIRST COMMON. 12 feet long.

1866.—BUILDING LUMBER. 4x4 CAROLINA FLOORING. 4x4 DELAWARE FLOORING. 4x4 WHITE PINE FLOORING.

1866.—CEDAR AND CYPRESS SHINGLES. LONG GRAY SHINGLES. SHORT CEDAR SHINGLES.

1866.—LUMBER FOR INTERIORS. RED CEDAR, WALNUT AND PINE. BEST PLANK.

1866.—CEDAR AND CYPRESS SHINGLES. LONG GRAY SHINGLES. SHORT CEDAR SHINGLES.

1866.—LUMBER FOR INTERIORS. RED CEDAR, WALNUT AND PINE. BEST PLANK.

FINANCIAL.

SMITH, RANDOLPH & CO. BANKERS AND BROKERS. 10 South Third St., 5 Nassau Street, Philadelphia, New York.

STOCKS AND GOLD. BOUGHT AND SOLD ON COMMISSION. INTEREST ALLOWED ON DEPOSITS.

BANKING HOUSE OF JAY COOKE & CO. 112 and 114 S. Third St., Phila. Dealers in all Government Securities.

OLD 5 20'S WANTED IN EXCHANGE FOR NEW. ALIBERAL DIFFERENCE ALLOWED.

COMPOUND INTEREST NOTES. BOUGHT AND SOLD. Special business accommodations reserved for Ladies.

5-20's, 7 3-10's, 10-40's. DE HAVEN & BRO. 40 SOUTH THIRD STREET.

NATIONAL EXCHANGE BANK. CAPITAL \$300,000, FULL PAID. Has Removed To Its New Banking House.

NO. 633 and 635 Chestnut Street. J. W. GILBOUGH, Cashier. A. BOYD, President.

STOCK BROKER. GEO. HENDERSON, JR. NO. 223 DOCK STREET.

PLEASANT VALLEY WINE CO. Sparkling and Still Wines. G. W. MIDDLETON, Sole Agent.

HER MAJESTY CHAMPAGNE. J. F. DUNTON. 161 SOUTH FRONT ST., SOLE AGENT.

MASONIC MARKS. MARTIN LEANS, No. 48 CHESTNUT STREET.

THE GRACE MODEL PAPER COLLARS. TO BE HAD EVERYWHERE. VAN DEUSEN, BOEHMAN & CO.

FOR NEW YORK. Via Delaware and Baritan Canal. The Philadelphia and New York Express Steamship Company.

FOR SAVANNAH, GA. The Philadelphia and Southern Mail Steamship Company. Regular Lines, second wharf below Spruce Street.

FOR NEW ORLEANS DIRECT. THE PHILADELPHIA AND SOUTHERN MAIL STEAMSHIP COMPANY'S REGULAR LINE.

FOR SAVANNAH, GA. The Philadelphia and Southern Mail Steamship Company. Regular Lines, second wharf below Spruce Street.

SHIPPING.

FOR SAVANNAH, GA. The Philadelphia and Southern Mail Steamship Company. Regular Lines, second wharf below Spruce Street.

FOR NEW ORLEANS DIRECT. THE PHILADELPHIA AND SOUTHERN MAIL STEAMSHIP COMPANY'S REGULAR LINE.

FOR SAVANNAH, GA. The Philadelphia and Southern Mail Steamship Company. Regular Lines, second wharf below Spruce Street.

FOR NEW ORLEANS DIRECT. THE PHILADELPHIA AND SOUTHERN MAIL STEAMSHIP COMPANY'S REGULAR LINE.

FOR SAVANNAH, GA. The Philadelphia and Southern Mail Steamship Company. Regular Lines, second wharf below Spruce Street.

FOR NEW ORLEANS DIRECT. THE PHILADELPHIA AND SOUTHERN MAIL STEAMSHIP COMPANY'S REGULAR LINE.

FOR SAVANNAH, GA. The Philadelphia and Southern Mail Steamship Company. Regular Lines, second wharf below Spruce Street.

FOR NEW ORLEANS DIRECT. THE PHILADELPHIA AND SOUTHERN MAIL STEAMSHIP COMPANY'S REGULAR LINE.

FOR SAVANNAH, GA. The Philadelphia and Southern Mail Steamship Company. Regular Lines, second wharf below Spruce Street.

FOR NEW ORLEANS DIRECT. THE PHILADELPHIA AND SOUTHERN MAIL STEAMSHIP COMPANY'S REGULAR LINE.

FOR SAVANNAH, GA. The Philadelphia and Southern Mail Steamship Company. Regular Lines, second wharf below Spruce Street.

FOR NEW ORLEANS DIRECT. THE PHILADELPHIA AND SOUTHERN MAIL STEAMSHIP COMPANY'S REGULAR LINE.

FOR SAVANNAH, GA. The Philadelphia and Southern Mail Steamship Company. Regular Lines, second wharf below Spruce Street.

FOR NEW ORLEANS DIRECT. THE PHILADELPHIA AND SOUTHERN MAIL STEAMSHIP COMPANY'S REGULAR LINE.

FOR SAVANNAH, GA. The Philadelphia and Southern Mail Steamship Company. Regular Lines, second wharf below Spruce Street.

FOR NEW ORLEANS DIRECT. THE PHILADELPHIA AND SOUTHERN MAIL STEAMSHIP COMPANY'S REGULAR LINE.

FOR SAVANNAH, GA. The Philadelphia and Southern Mail Steamship Company. Regular Lines, second wharf below Spruce Street.

LEGAL NOTICES.

IN THE ORPHANS' COURT FOR THE CITY AND COUNTY OF PHILADELPHIA.—Estate of ANDREW W. PAGE, Deceased.—Notice is hereby given that the said Court has appointed...

IN THE ORPHANS' COURT FOR THE CITY AND COUNTY OF PHILADELPHIA.—Estate of JOSHUA BROWN, Deceased.—The Auditor appointed by the Court to audit and adjust the account of WILLIAM BROWN and GEORGE T. MILLER, Executors of the said Estate, has filed his report...

IN THE ORPHANS' COURT FOR THE CITY AND COUNTY OF PHILADELPHIA.—Estate of WILLIAM BROWN, Deceased.—The Auditor appointed by the Court to audit and adjust the account of WILLIAM BROWN and GEORGE T. MILLER, Executors of the said Estate, has filed his report...

IN THE ORPHANS' COURT FOR THE CITY AND COUNTY OF PHILADELPHIA.—Estate of JOHN GEORGE HELLIG, Deceased.—The Auditor appointed by the Court to audit and adjust the account of HARRY G. CHAY, Administrator of the said Estate, has filed his report...

IN THE ORPHANS' COURT FOR THE CITY AND COUNTY OF PHILADELPHIA.—Estate of THOMAS TAYLOR, Deceased.—The Auditor appointed by the Court to audit and adjust the account of THOMAS TAYLOR, Executor of the said Estate, has filed his report...

IN THE ORPHANS' COURT FOR THE CITY AND COUNTY OF PHILADELPHIA.—Estate of THOMAS TAYLOR, Deceased.—The Auditor appointed by the Court to audit and adjust the account of THOMAS TAYLOR, Executor of the said Estate, has filed his report...

IN THE ORPHANS' COURT FOR THE CITY AND COUNTY OF PHILADELPHIA.—Estate of THOMAS TAYLOR, Deceased.—The Auditor appointed by the Court to audit and adjust the account of THOMAS TAYLOR, Executor of the said Estate, has filed his report...

IN THE ORPHANS' COURT FOR THE CITY AND COUNTY OF PHILADELPHIA.—Estate of THOMAS TAYLOR, Deceased.—The Auditor appointed by the Court to audit and adjust the account of THOMAS TAYLOR, Executor of the said Estate, has filed his report...

IN THE ORPHANS' COURT FOR THE CITY AND COUNTY OF PHILADELPHIA.—Estate of THOMAS TAYLOR, Deceased.—The Auditor appointed by the Court to audit and adjust the account of THOMAS TAYLOR, Executor of the said Estate, has filed his report...

IN THE ORPHANS' COURT FOR THE CITY AND COUNTY OF PHILADELPHIA.—Estate of THOMAS TAYLOR, Deceased.—The Auditor appointed by the Court to audit and adjust the account of THOMAS TAYLOR, Executor of the said Estate, has filed his report...

IN THE ORPHANS' COURT FOR THE CITY AND COUNTY OF PHILADELPHIA.—Estate of THOMAS TAYLOR, Deceased.—The Auditor appointed by the Court to audit and adjust the account of THOMAS TAYLOR, Executor of the said Estate, has filed his report...

IN THE ORPHANS' COURT FOR THE CITY AND COUNTY OF PHILADELPHIA.—Estate of THOMAS TAYLOR, Deceased.—The Auditor appointed by the Court to audit and adjust the account of THOMAS TAYLOR, Executor of the said Estate, has filed his report...

IN THE ORPHANS' COURT FOR THE CITY AND COUNTY OF PHILADELPHIA.—Estate of THOMAS TAYLOR, Deceased.—The Auditor appointed by the Court to audit and adjust the account of THOMAS TAYLOR, Executor of the said Estate, has filed his report...

IN THE ORPHANS' COURT FOR THE CITY AND COUNTY OF PHILADELPHIA.—Estate of THOMAS TAYLOR, Deceased.—The Auditor appointed by the Court to audit and adjust the account of THOMAS TAYLOR, Executor of the said Estate, has filed his report...

IN THE ORPHANS' COURT FOR THE CITY AND COUNTY OF PHILADELPHIA.—Estate of THOMAS TAYLOR, Deceased.—The Auditor appointed by the Court to audit and adjust the account of THOMAS TAYLOR, Executor of the said Estate, has filed his report...

IN THE ORPHANS' COURT FOR THE CITY AND COUNTY OF PHILADELPHIA.—Estate of THOMAS TAYLOR, Deceased.—The Auditor appointed by the Court to audit and adjust the account of THOMAS TAYLOR, Executor of the said Estate, has filed his report...

IN THE ORPHANS' COURT FOR THE CITY AND COUNTY OF PHILADELPHIA.—Estate of THOMAS TAYLOR, Deceased.—The Auditor appointed by the Court to audit and adjust the account of THOMAS TAYLOR, Executor of the said Estate, has filed his report...

COPARTNERSHIPS.

DISSOLUTION OF COPARTNERSHIP.—The copartnership heretofore existing under the name of GEORGE B. REESE & SONS, and which was formed by the late GEORGE B. REESE, and GEORGE B. REESE & SONS, is hereby dissolved...

DISSOLUTION OF COPARTNERSHIP.—The copartnership heretofore existing under the name of GEORGE B. REESE & SONS, and which was formed by the late GEORGE B. REESE, and GEORGE B. REESE & SONS, is hereby dissolved...

DISSOLUTION OF COPARTNERSHIP.—The copartnership heretofore existing under the name of GEORGE B. REESE & SONS, and which was formed by the late GEORGE B. REESE, and GEORGE B. REESE & SONS, is hereby dissolved...

DISSOLUTION OF COPARTNERSHIP.—The copartnership heretofore existing under the name of GEORGE B. REESE & SONS, and which was formed by the late GEORGE B. REESE, and GEORGE B. REESE & SONS, is hereby dissolved...

DISSOLUTION OF COPARTNERSHIP.—The copartnership heretofore existing under the name of GEORGE B. REESE & SONS, and which was formed by the late GEORGE B. REESE, and GEORGE B. REESE & SONS, is hereby dissolved...

DISSOLUTION OF COPARTNERSHIP.—The copartnership heretofore existing under the name of GEORGE B. REESE & SONS, and which was formed by the late GEORGE B. REESE, and GEORGE B. REESE & SONS, is hereby dissolved...

DISSOLUTION OF COPARTNERSHIP.—The copartnership heretofore existing under the name of GEORGE B. REESE & SONS, and which was formed by the late GEORGE B. REESE, and GEORGE B. REESE & SONS, is hereby dissolved...

DISSOLUTION OF COPARTNERSHIP.—The copartnership heretofore existing under the name of GEORGE B. REESE & SONS, and which was formed by the late GEORGE B. REESE, and GEORGE B. REESE & SONS, is hereby dissolved...

DISSOLUTION OF COPARTNERSHIP.—The copartnership heretofore existing under the name of GEORGE B. REESE & SONS, and which was formed by the late GEORGE B. REESE, and GEORGE B. REESE & SONS, is hereby dissolved...

DISSOLUTION OF COPARTNERSHIP.—The copartnership heretofore existing under the name of GEORGE B. REESE & SONS, and which was formed by the late GEORGE B. REESE, and GEORGE B. REESE & SONS, is hereby dissolved...

DISSOLUTION OF COPARTNERSHIP.—The copartnership heretofore existing under the name of GEORGE B. REESE & SONS, and which was formed by the late GEORGE B. REESE, and GEORGE B. REESE & SONS, is hereby dissolved...

DISSOLUTION OF COPARTNERSHIP.—The copartnership heretofore existing under the name of GEORGE B. REESE & SONS, and which was formed by the late GEORGE B. REESE, and GEORGE B. REESE & SONS, is hereby dissolved...

DISSOLUTION OF COPARTNERSHIP.—The copartnership heretofore existing under the name of GEORGE B. REESE & SONS, and which was formed by the late GEORGE B. REESE, and GEORGE B. REESE & SONS, is hereby dissolved...

DISSOLUTION OF COPARTNERSHIP.—The copartnership heretofore existing under the name of GEORGE B. REESE & SONS, and which was formed by the late GEORGE B. REESE, and GEORGE B. REESE & SONS, is hereby dissolved...

DISSOLUTION OF COPARTNERSHIP.—The copartnership heretofore existing under the name of GEORGE B. REESE & SONS, and which was formed by the late GEORGE B. REESE, and GEORGE B. REESE & SONS, is hereby dissolved...

DISSOLUTION OF COPARTNERSHIP.—The copartnership heretofore existing under the name of GEORGE B. REESE & SONS, and which was formed by the late GEORGE B. REESE, and GEORGE B. REESE & SONS, is hereby dissolved...

DISSOLUTION OF COPARTNERSHIP.—The copartnership heretofore existing under the name of GEORGE B. REESE & SONS, and which was formed by the late GEORGE B. REESE, and GEORGE B. REESE & SONS, is hereby dissolved...