

CHESS COLUMN

PHILADELPHIA EVENING BULLETIN

FRIDAY, November 30, 1888.

Answers to Correspondents.
"J. B. Mearns."—Copy of your last game has been mislaid. Send duplicate, and also others of your games with L—.

MARCHEL DE SAXE'S PROBLEM.—We have received some communications regarding this problem. The mate, as Rev. L. W. Davis, of Beloit, Wis., observes, can be effected in eight moves, by even removing the B at B sq. R at K 2, and Kt at Q 7, e. g.

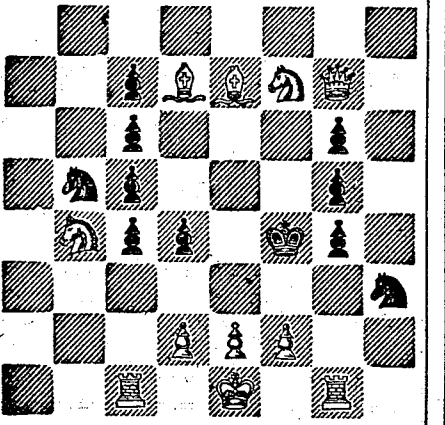
- 1. Kt to Q 7 (ch) K to K 2
2. Q to B 3 (ch) K to K 3
3. R to R 4 K to K 4
4. Q to K 8 (ch) K to K 3
5. K to B 3 (ch) K to K 4
6. K to B 3 (ch) K to K 4
7. Q to K 8 (ch) K to R 8
8. P mates.

The author's solution is below.
—A Chess Column, of very moderate pretensions, has appeared in a German weekly paper, named Die Neue Welt. The city now contains four Chess Columns.

—By request, we give a comparative table of the first and fourth editions of the German Hanbuch. The columns of figures denote the number of variations in each opening:

Table with 2 columns: Opening Name and Number of Variations. Includes Irregular Knight's Opening, Philidor's Defence, French Gambit, etc.

Problem No. 464.



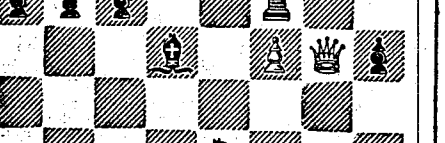
White to sacrifice all his pieces and pawns, save one Knight, and give a smothered mate in seven moves. A m thered mate in fifteen moves, without the above stipulation has been discovered by Mr. Amos Kresner, of this city.

Solution to No. 463.

- 1. Kt to Q 7 (ch) K to K 2
2. R to K 8 (ch) K to K 3
3. Kt to K 6 K to K 4
4. Q to K 7 (ch) K to K 4
5. Kt to K 5 P to K 4
6. B to K 3 P to K 4
7. Q to K 7 (ch) K to K 3
8. K to R 2 P to R 6
9. P to K 3 P to R 6
10. P to K 4 P to R 6
11. P to K 5 P to R 3
12. Q to B 6 (ch) K to R 2
13. P to K 6 mate.

End-Game No. 48.

The following position occurred in play at Mr. Hazard's, at the Mercantile Library. In the actual game, R to K 2 was played, but I pointed out by a looker-on that White might have drawn the game.



White to play and draw.

Solution to End-Game No. 47.

- 1. R to Q 8 (ch) R to K 8 sq
2. B to Q 2 K to K 5 to K 2
3. P to K 4, and draws.

CHESS IN PHILADELPHIA.

Between Mr. W. H. Sayre, giving the Knight, and Mr. (Remove White's Queen's Knight.)

- 1. P to K 4 B to K 4
2. P to K 4 B to K 4
3. Kt to B 3 P to K 4
4. B to B 4 P to K 5
5. Castles P to K 5
6. Q to K 3 Q to K 3
7. P to K 5 Q to K 3
8. P to Q 3 B to R 3
9. B to Q 2 P to Q 4 (ch)
10. R to B 2 Q to B sq
(This retreat at once compromises his game.)

CHESS IN MEMPHIS, TENN.

Game No. 1619. Between Mr. Jacob Elson, and Mr. Littleton, one of the foremost players of the West. (Two Knights' Defence.)

- 1. P to K 4 P to K 4
2. Kt to B 3 Kt to B 3
3. B to B 4 Kt to B 3
4. Kt to K 5 Kt to R 4
5. P to P 3 P to Q 4
6. P to Q 3 P to K 8

TRAVELING GUIDE.

NORTH PENNSYLVANIA RAILROAD

On and after Monday, Nov. 12, 1888, Passenger trains leave the Depot Third Street above Thompson, daily (Sundays excepted).

At 7:30 A. M.—Morning Express for Bethlehem and Allentown, stopping at Reading, Pottsville, Schuylkill, and Pottsville.

At 8:30 A. M.—Evening Express for Bethlehem and Allentown, stopping at Reading, Pottsville, Schuylkill, and Pottsville.

At 10:30 A. M.—Morning Express for Bethlehem and Allentown, stopping at Reading, Pottsville, Schuylkill, and Pottsville.

At 12:30 P. M.—Day Express for Bethlehem and Allentown, stopping at Reading, Pottsville, Schuylkill, and Pottsville.

At 2:30 P. M.—Evening Express for Bethlehem and Allentown, stopping at Reading, Pottsville, Schuylkill, and Pottsville.

At 4:30 P. M.—Evening Express for Bethlehem and Allentown, stopping at Reading, Pottsville, Schuylkill, and Pottsville.

At 6:30 P. M.—Evening Express for Bethlehem and Allentown, stopping at Reading, Pottsville, Schuylkill, and Pottsville.

At 8:30 P. M.—Evening Express for Bethlehem and Allentown, stopping at Reading, Pottsville, Schuylkill, and Pottsville.

At 10:30 P. M.—Evening Express for Bethlehem and Allentown, stopping at Reading, Pottsville, Schuylkill, and Pottsville.

At 12:30 A. M.—Night Express for Bethlehem and Allentown, stopping at Reading, Pottsville, Schuylkill, and Pottsville.

At 2:30 A. M.—Night Express for Bethlehem and Allentown, stopping at Reading, Pottsville, Schuylkill, and Pottsville.

At 4:30 A. M.—Night Express for Bethlehem and Allentown, stopping at Reading, Pottsville, Schuylkill, and Pottsville.

At 6:30 A. M.—Night Express for Bethlehem and Allentown, stopping at Reading, Pottsville, Schuylkill, and Pottsville.

At 8:30 A. M.—Night Express for Bethlehem and Allentown, stopping at Reading, Pottsville, Schuylkill, and Pottsville.

At 10:30 A. M.—Night Express for Bethlehem and Allentown, stopping at Reading, Pottsville, Schuylkill, and Pottsville.

At 12:30 P. M.—Night Express for Bethlehem and Allentown, stopping at Reading, Pottsville, Schuylkill, and Pottsville.

At 2:30 P. M.—Night Express for Bethlehem and Allentown, stopping at Reading, Pottsville, Schuylkill, and Pottsville.

At 4:30 P. M.—Night Express for Bethlehem and Allentown, stopping at Reading, Pottsville, Schuylkill, and Pottsville.

At 6:30 P. M.—Night Express for Bethlehem and Allentown, stopping at Reading, Pottsville, Schuylkill, and Pottsville.

At 8:30 P. M.—Night Express for Bethlehem and Allentown, stopping at Reading, Pottsville, Schuylkill, and Pottsville.

At 10:30 P. M.—Night Express for Bethlehem and Allentown, stopping at Reading, Pottsville, Schuylkill, and Pottsville.

At 12:30 A. M.—Night Express for Bethlehem and Allentown, stopping at Reading, Pottsville, Schuylkill, and Pottsville.

At 2:30 A. M.—Night Express for Bethlehem and Allentown, stopping at Reading, Pottsville, Schuylkill, and Pottsville.

At 4:30 A. M.—Night Express for Bethlehem and Allentown, stopping at Reading, Pottsville, Schuylkill, and Pottsville.

At 6:30 A. M.—Night Express for Bethlehem and Allentown, stopping at Reading, Pottsville, Schuylkill, and Pottsville.

TRAVELING GUIDE.

PHILADELPHIA AND WASHINGTON RAILROAD

On and after Monday, Nov. 12, 1888, Passenger trains leave the Depot Third Street above Thompson, daily (Sundays excepted).

At 7:30 A. M.—Morning Express for Washington, stopping at Philadelphia, Baltimore, and Washington.

At 8:30 A. M.—Evening Express for Washington, stopping at Philadelphia, Baltimore, and Washington.

At 10:30 A. M.—Morning Express for Washington, stopping at Philadelphia, Baltimore, and Washington.

At 12:30 P. M.—Day Express for Washington, stopping at Philadelphia, Baltimore, and Washington.

At 2:30 P. M.—Evening Express for Washington, stopping at Philadelphia, Baltimore, and Washington.

At 4:30 P. M.—Evening Express for Washington, stopping at Philadelphia, Baltimore, and Washington.

At 6:30 P. M.—Evening Express for Washington, stopping at Philadelphia, Baltimore, and Washington.

At 8:30 P. M.—Evening Express for Washington, stopping at Philadelphia, Baltimore, and Washington.

At 10:30 P. M.—Evening Express for Washington, stopping at Philadelphia, Baltimore, and Washington.

At 12:30 A. M.—Night Express for Washington, stopping at Philadelphia, Baltimore, and Washington.

At 2:30 A. M.—Night Express for Washington, stopping at Philadelphia, Baltimore, and Washington.

At 4:30 A. M.—Night Express for Washington, stopping at Philadelphia, Baltimore, and Washington.

At 6:30 A. M.—Night Express for Washington, stopping at Philadelphia, Baltimore, and Washington.

At 8:30 A. M.—Night Express for Washington, stopping at Philadelphia, Baltimore, and Washington.

At 10:30 A. M.—Night Express for Washington, stopping at Philadelphia, Baltimore, and Washington.

At 12:30 P. M.—Night Express for Washington, stopping at Philadelphia, Baltimore, and Washington.

At 2:30 P. M.—Night Express for Washington, stopping at Philadelphia, Baltimore, and Washington.

At 4:30 P. M.—Night Express for Washington, stopping at Philadelphia, Baltimore, and Washington.

At 6:30 P. M.—Night Express for Washington, stopping at Philadelphia, Baltimore, and Washington.

At 8:30 P. M.—Night Express for Washington, stopping at Philadelphia, Baltimore, and Washington.

At 10:30 P. M.—Night Express for Washington, stopping at Philadelphia, Baltimore, and Washington.

At 12:30 A. M.—Night Express for Washington, stopping at Philadelphia, Baltimore, and Washington.

At 2:30 A. M.—Night Express for Washington, stopping at Philadelphia, Baltimore, and Washington.

At 4:30 A. M.—Night Express for Washington, stopping at Philadelphia, Baltimore, and Washington.

At 6:30 A. M.—Night Express for Washington, stopping at Philadelphia, Baltimore, and Washington.

TRAVELING GUIDE.

PENNSYLVANIA CENTRAL RAILROAD

On and after Monday, Nov. 12, 1888, Passenger trains leave the Depot Third Street above Thompson, daily (Sundays excepted).

At 7:30 A. M.—Morning Express for New York, stopping at Philadelphia, New York, and New York.

At 8:30 A. M.—Evening Express for New York, stopping at Philadelphia, New York, and New York.

At 10:30 A. M.—Morning Express for New York, stopping at Philadelphia, New York, and New York.

At 12:30 P. M.—Day Express for New York, stopping at Philadelphia, New York, and New York.

At 2:30 P. M.—Evening Express for New York, stopping at Philadelphia, New York, and New York.

At 4:30 P. M.—Evening Express for New York, stopping at Philadelphia, New York, and New York.

At 6:30 P. M.—Evening Express for New York, stopping at Philadelphia, New York, and New York.

At 8:30 P. M.—Evening Express for New York, stopping at Philadelphia, New York, and New York.

At 10:30 P. M.—Evening Express for New York, stopping at Philadelphia, New York, and New York.

At 12:30 A. M.—Night Express for New York, stopping at Philadelphia, New York, and New York.

At 2:30 A. M.—Night Express for New York, stopping at Philadelphia, New York, and New York.

At 4:30 A. M.—Night Express for New York, stopping at Philadelphia, New York, and New York.

At 6:30 A. M.—Night Express for New York, stopping at Philadelphia, New York, and New York.

At 8:30 A. M.—Night Express for New York, stopping at Philadelphia, New York, and New York.

At 10:30 A. M.—Night Express for New York, stopping at Philadelphia, New York, and New York.

At 12:30 P. M.—Night Express for New York, stopping at Philadelphia, New York, and New York.

At 2:30 P. M.—Night Express for New York, stopping at Philadelphia, New York, and New York.

At 4:30 P. M.—Night Express for New York, stopping at Philadelphia, New York, and New York.

At 6:30 P. M.—Night Express for New York, stopping at Philadelphia, New York, and New York.

At 8:30 P. M.—Night Express for New York, stopping at Philadelphia, New York, and New York.

At 10:30 P. M.—Night Express for New York, stopping at Philadelphia, New York, and New York.

At 12:30 A. M.—Night Express for New York, stopping at Philadelphia, New York, and New York.

At 2:30 A. M.—Night Express for New York, stopping at Philadelphia, New York, and New York.

At 4:30 A. M.—Night Express for New York, stopping at Philadelphia, New York, and New York.

At 6:30 A. M.—Night Express for New York, stopping at Philadelphia, New York, and New York.

TRAVELING GUIDE.

WILMINGTON AND BALTIMORE RAILROAD

On and after Monday, Nov. 12, 1888, Passenger trains leave the Depot Third Street above Thompson, daily (Sundays excepted).

At 7:30 A. M.—Morning Express for Baltimore, stopping at Philadelphia, Baltimore, and Baltimore.

At 8:30 A. M.—Evening Express for Baltimore, stopping at Philadelphia, Baltimore, and Baltimore.

At 10:30 A. M.—Morning Express for Baltimore, stopping at Philadelphia, Baltimore, and Baltimore.

At 12:30 P. M.—Day Express for Baltimore, stopping at Philadelphia, Baltimore, and Baltimore.

At 2:30 P. M.—Evening Express for Baltimore, stopping at Philadelphia, Baltimore, and Baltimore.

At 4:30 P. M.—Evening Express for Baltimore, stopping at Philadelphia, Baltimore, and Baltimore.

At 6:30 P. M.—Evening Express for Baltimore, stopping at Philadelphia, Baltimore, and Baltimore.

At 8:30 P. M.—Evening Express for Baltimore, stopping at Philadelphia, Baltimore, and Baltimore.

At 10:30 P. M.—Evening Express for Baltimore, stopping at Philadelphia, Baltimore, and Baltimore.

At 12:30 A. M.—Night Express for Baltimore, stopping at Philadelphia, Baltimore, and Baltimore.

At 2:30 A. M.—Night Express for Baltimore, stopping at Philadelphia, Baltimore, and Baltimore.

At 4:30 A. M.—Night Express for Baltimore, stopping at Philadelphia, Baltimore, and Baltimore.

At 6:30 A. M.—Night Express for Baltimore, stopping at Philadelphia, Baltimore, and Baltimore.

At 8:30 A. M.—Night Express for Baltimore, stopping at Philadelphia, Baltimore, and Baltimore.

At 10:30 A. M.—Night Express for Baltimore, stopping at Philadelphia, Baltimore, and Baltimore.

At 12:30 P. M.—Night Express for Baltimore, stopping at Philadelphia, Baltimore, and Baltimore.

At 2:30 P. M.—Night Express for Baltimore, stopping at Philadelphia, Baltimore, and Baltimore.

At 4:30 P. M.—Night Express for Baltimore, stopping at Philadelphia, Baltimore, and Baltimore.

At 6:30 P. M.—Night Express for Baltimore, stopping at Philadelphia, Baltimore, and Baltimore.

At 8:30 P. M.—Night Express for Baltimore, stopping at Philadelphia, Baltimore, and Baltimore.

At 10:30 P. M.—Night Express for Baltimore, stopping at Philadelphia, Baltimore, and Baltimore.

At 12:30 A. M.—Night Express for Baltimore, stopping at Philadelphia, Baltimore, and Baltimore.

At 2:30 A. M.—Night Express for Baltimore, stopping at Philadelphia, Baltimore, and Baltimore.

At 4:30 A. M.—Night Express for Baltimore, stopping at Philadelphia, Baltimore, and Baltimore.

At 6:30 A. M.—Night Express for Baltimore, stopping at Philadelphia, Baltimore, and Baltimore.

SHIPPING

FOR NEW YORK.

The Philadelphia and New York Express Steamship Company.

Steamship Prospector leaves daily from Philadelphia for New York, stopping at Baltimore and Washington.

At 7:30 A. M.—Morning Express for New York, stopping at Philadelphia, Baltimore, and New York.

At 8:30 A. M.—Evening Express for New York, stopping at Philadelphia, Baltimore, and New York.

At 10:30 A. M.—Morning Express for New York, stopping at Philadelphia, Baltimore, and New York.

At 12:30 P. M.—Day Express for New York, stopping at Philadelphia, Baltimore, and New York.

At 2:30 P. M.—Evening Express for New York, stopping at Philadelphia, Baltimore, and New York.

At 4:30 P. M.—Evening Express for New York, stopping at Philadelphia, Baltimore, and New York.

At 6:30 P. M.—Evening Express for New York, stopping at Philadelphia, Baltimore, and New York.

At 8:30 P. M.—Evening Express for New York, stopping at Philadelphia, Baltimore, and New York.

At 10:30 P. M.—Evening Express for New York, stopping at Philadelphia, Baltimore, and New York.

At 12:30 A. M.—Night Express for New York, stopping at Philadelphia, Baltimore, and New York.

At 2:30 A. M.—Night Express for New York, stopping at Philadelphia, Baltimore, and New York.

At 4:30 A. M.—Night Express for New York, stopping at Philadelphia, Baltimore, and New York.

At 6:30 A. M.—Night Express for New York, stopping at Philadelphia, Baltimore, and New York.

At 8:30 A. M.—Night Express for New York, stopping at Philadelphia, Baltimore, and New York.

At 10:30 A. M.—Night Express for New York, stopping at Philadelphia, Baltimore, and New York.

At 12:30 P. M.—Night Express for New York, stopping at Philadelphia, Baltimore, and New York.

At 2:30 P. M.—Night Express for New York, stopping at Philadelphia, Baltimore, and New York.

At 4:30 P. M.—Night Express for New York, stopping at Philadelphia, Baltimore, and New York.

At 6:30 P. M.—Night Express for New York, stopping at Philadelphia, Baltimore, and New York.

At 8:30 P. M.—Night Express for New York, stopping at Philadelphia, Baltimore, and New York.

At 10:30 P. M.—Night Express for New York, stopping at Philadelphia, Baltimore, and New York.

At 12:30 A. M.—Night Express for New York, stopping at Philadelphia, Baltimore, and New York.

At 2:30 A. M.—Night Express for New York, stopping at Philadelphia, Baltimore, and New York.

At 4:30 A. M.—Night Express for New York, stopping at Philadelphia, Baltimore, and New York.

At 6:30 A. M.—Night Express for New York, stopping at Philadelphia, Baltimore, and New York.