

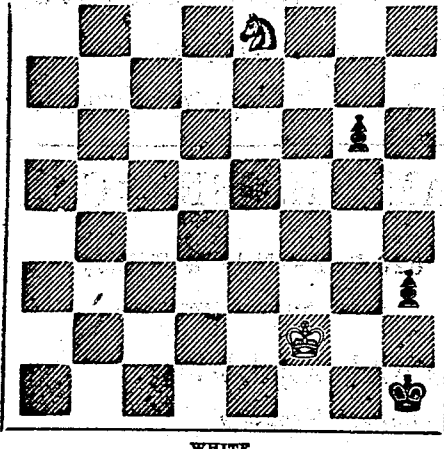
CHESS COLUMN

PHILADELPHIA EVENING BULLETIN, FRIDAY, October 19, 1866.

All communications for this column must be directed "Chess Editor of Evening Bulletin," and should reach the office, at latest, on Thursday morning.

Answers to Correspondents. "D. P."—With this number we close our eighth volume. We shall make some observations on the subject next week.

Problem No. 459. BY SALVIO. BLACK.



White to play and mate in seven moves.

CHESS IN PHILADELPHIA.

Game No. 1492. (Remove White's Queen's Knight.)

Between Mr. Warner, giving the Knight and Dr. B.

(Kieseritzky Gambit.)

White (Mr. Warner), Black (Dr. B.).

- 1. P to K4 P to K4
2. P to K4 P to K4
3. Kt to B3 P to Kt4
4. P to K4 P to Kt4
5. Kt to K5 Kt to R3
6. Kt x Kt P x Kt
7. Kt x R5 B x Kt
8. Q to R5 B x Kt
9. P x P Castles
10. B to Q3 P to B4
11. Castles R to B3
12. B to B4 R to K R3
13. Q to K5 Q to Q3
14. Q to Q3 P to Kt3
15. Q x B P B to Kt5
16. B to B3 R to Kt5
17. B to B3 R x P
18. B to B3 P to B5
19. B to Q2 P to R5
20. Q to K4 Kt to Q2
21. B to B3 R to Ksq
22. P to Q4 Kt to B3
23. P to Q3 Kt to Q3
24. P x B Kt to K5 (ch)
25. Kt to Ktq Kt x P
26. B x Kt R x B
27. K to R4 B to B3
28. Q to R Ksq Q to R4
29. R to B3 Q to Kt5
30. R to K8 (ch) B x R
31. P to Q8 (ch), and wins.

CHESS IN LONDON.

Game No. 1493. Fourteenth and concluding game of the Anderssen-Steinitz match.

(King's Gambit.)

White (Mr. Steinitz), Black (Mr. Anderssen).

- 1. P to K4 P to K4
2. P to K4 P to K4
3. R to Kt3 P to Q3
4. R to Kt3 Kt to B3
5. P to Q3 Castles
6. Q to K2 B to Kt5
7. P x P P x P
8. B to B3 Q to Kt2
9. Q to Q2 Q to Q2
10. B to Kt3 P to Q4
11. Castles (K R) Kt x B
12. B x B Q to Rsq
13. K to R4 Q to R4
14. Q to B2 P to Q3
15. P to Q4 P to R3
16. Kt to R4 P x P
17. B to Kt3 P to Q4
18. P to Q3 Kt to Kt5
19. Q to Kt3 B to Q2
20. K to B3 Q to Kt5
21. K to B3 B to Q2
(P to Q B3 would have won a piece.)

81. K to B7 Kt to B3
82. K to Kt6 Kt to Kt sq
83. R x P Kt to B3
Mate in three moves.

Game No. 1494. Between Messrs. Cochrane and George Walker.

(Scott's Gambit.)

White (Mr. Cochrane), Black (Mr. Walker).

- 1. P to K4 P to K4
2. Kt to B3 Q to B3
3. P to Q4 Kt x P
4. Kt x P Kt to K3
5. B to Q B4 P to Q B3
6. Castles Kt to B3
7. Kt x B P
8. B x Kt (ch) K x B
9. P to K1 Kt to Q4
10. P to Q B4 Kt to K3
11. K to Rsq P to K R4
12. P to K B4 P to Kt3
13. P to B (ch) K x P
14. B to B4 (ch), and wins.

Game No. 1495. Between the same players.

(Scott's Gambit.)

White (Mr. Walker), Black (Mr. Cochrane).

- 1. P to K4 P to K4
2. Kt to B3 Q to B3
3. P to Q4 Kt x P
4. P to B4 P to Q B3
5. P to B4 P to Kt5 (ch)
6. P x P B to R4
7. P to K5 P to Q3
(7. P to Q4 is better.)
8. Q to Kt3 Q to K2
9. Castles Kt x B
10. B to R3 Q to B3
11. Q to Kt2 Kt to K2
12. Kt to K4 Kt to B5
13. B to Kt5 (ch) K x B
14. Q x K B Q x Kt
15. B x P (ch) K to Bsq
16. K to R Ksq Q to B4
17. Kt to B3 Kt to B3
18. Q to B5 (ch) Kt to K2
19. Kt to Kt6 (ch) Kt to K2
(Prettily played.)

Game No. 1496. Between the same players.

(Scott's Gambit.)

White (Mr. Walker), Black (Mr. Cochrane).

- 1. P to K4 P to K4
2. P to K4 P to K4
3. Kt to B3 P to Kt4
4. P to K4 P to Kt4
5. Kt to K5 Kt to R3
6. Kt x Kt P x Kt
7. Kt x R5 B x Kt
8. Q to R5 B x Kt
9. P x P Castles
10. B to Q3 P to B4
11. Castles R to B3
12. B to B4 R to K R3
13. Q to K5 Q to Q3
14. Q to Q3 P to Kt3
15. Q x B P B to Kt5
16. B to B3 R to Kt5
17. B to B3 R x P
18. B to B3 P to B5
19. B to Q2 P to R5
20. Q to K4 Kt to Q2
21. B to B3 R to Ksq
22. P to Q4 Kt to B3
23. P to Q3 Kt to Q3
24. P x B Kt to K5 (ch)
25. Kt to Ktq Kt x P
26. B x Kt R x B
27. K to R4 B to B3
28. Q to R Ksq Q to R4
29. R to B3 Q to Kt5
30. R to K8 (ch) B x R
31. P to Q8 (ch), and wins.

Game No. 1497. Played between Messrs. Anderssen and Knorre.

(Queen's Gambit.)

White (Mr. Anderssen), Black (Mr. Knorre).

- 1. P to K4 P to K4
2. Kt to B3 Q to B3
3. B to B4 B to B4
4. P to Kt4 P to Kt4
5. P to B3 P to Q3
6. Castles P to Q3
7. P to Q4 P to Q3
8. P x P B to Kt5
9. Q to Kt2 Q to Kt2
10. Q to Kt2 Kt to K2
11. K to B3 Castles
12. Kt to Kt3 Q to Kt3
13. P to Q B3 P to Q B3
14. Kt to Kt3 P to B3
15. Q to Q2 P to Q2
16. K to R3 Q to Q B3
17. P to Q B3 P to Q B3
18. P to Kt4 Kt to K4
19. R to Kt3 Kt x P
20. Kt to B4 Kt x P
21. P to Q3 P x P
22. P to Q3 P to Q3
23. P to Q3 P to Q3
24. B to B2 B to R4
25. Q to Q B3 P to B6
26. B to Bsq B to B6
27. R to Kt2 P to Kt3
28. R to Kt3 Kt to Rsq
29. R to Kt3 P to K R4
30. R to Q3 P to Kt4
31. P to Q6 Kt x P
32. P to Kt5 Q to K B2
33. Q x Kt B to Q5
And White mates in five moves.

Game No. 1498. Between Messrs. Knorre and Schalloff.

(Queen's Gambit.)

White (Mr. Knorre), Black (Mr. Schalloff).

- 1. P to K4 P to K4
2. Kt to B3 Q to B3
3. B to B4 B to B4
4. P to Kt4 P to Kt4
5. P to B3 P to Q3
6. P to Q4 P x P
7. Castles B to Kt5
8. P x P P to Q3
9. Q to Kt2 Q to Kt2
10. P to Q3 Kt to K2
11. B to Q3 Castles
12. Kt to Kt3 Kt to Kt3
13. Kt to Q B3 P to Q B3
14. Q to Q2 P to Q B3
15. Kt to Kt3 P to K B3
16. Kt to B5 B x Kt
17. P to R4 Kt to R2
18. Kt to R4 Kt to R2
(Threatening mate in three moves.)
19. B to B4 P to K R3
20. Q x Kt (ch) R to B2
21. Q x Kt P to Q4
22. Q to Q3 P to Q B5
23. R to Ksq Q to Q5
24. Q to K R3 P to Q5
25. R to K4 P to B6
(Threatening mate in three moves.)
26. B to R3 Q to R Ksq
27. R to K6 P to Bsq
28. R x B P to Q6
29. R to Q6 Q to R6
30. Q x Q Q x B
31. Q x Q Q x B
32. R to Q8 (ch) R to Bsq
33. Q to Q5 (ch) Kt to R2
34. Kt x R (ch), and wins.

MUSICAL.

MONSIEUR ALEXANDRE WOLOWSKI would inform the public generally that he is now ready to give instructions in singing and on the piano, according to his own system which heretofore has proved so successful in rendering the voice powerful and melodious, and at the same time imparting the facility of enabling the student to perform the most difficult passages. His system for the piano enables the pupil to execute the most difficult music with ease, boldness and brilliancy.

Remington Fairbank. Musical Refrains.

Signature of Rondinella's Fairy Air Refrains.

A. Taylor, Teacher of Singing and Piano.

Piano and Guitar—Miss Elizabeth.

Canary Birds—Twenty-five Carols.

TRAVELING GUIDE.

PHILADELPHIA AND BALTIMORE RAILROAD.

On and after Monday, May 21, 1866, Passenger trains will be run as follows:

MORNING EXPRESS. Leaving Philadelphia at 6:30 A.M. for Baltimore, stopping at Camden, Trenton, and New York, arriving at Baltimore at 11:30 A.M.

AFTERNOON EXPRESS. Leaving Philadelphia at 3:30 P.M. for Baltimore, stopping at Camden, Trenton, and New York, arriving at Baltimore at 7:30 P.M.

CHESTER VALLEY RAILROAD. Leaving Philadelphia at 7:00 A.M. for Lancaster, stopping at Pottsville and Gettysburg, arriving at Lancaster at 11:00 A.M.

PHILADELPHIA AND WASHINGTON RAILROAD. Leaving Philadelphia at 7:00 A.M. for Washington, stopping at New York, Baltimore, and Annapolis, arriving at Washington at 11:00 A.M.

PHILADELPHIA AND PITTSBURGH RAILROAD. Leaving Philadelphia at 7:00 A.M. for Pittsburgh, stopping at New York, Harrisburg, and Altoona, arriving at Pittsburgh at 11:00 A.M.

PHILADELPHIA AND PHOENIX RAILROAD. Leaving Philadelphia at 7:00 A.M. for Phoenix, stopping at New York, Harrisburg, and Altoona, arriving at Phoenix at 11:00 A.M.

PHILADELPHIA AND HARRISBURG RAILROAD. Leaving Philadelphia at 7:00 A.M. for Harrisburg, stopping at New York and Pottsville, arriving at Harrisburg at 11:00 A.M.

PHILADELPHIA AND YORK RAILROAD. Leaving Philadelphia at 7:00 A.M. for York, stopping at New York and Pottsville, arriving at York at 11:00 A.M.

PHILADELPHIA AND LEHIGH RAILROAD. Leaving Philadelphia at 7:00 A.M. for Lehigh, stopping at New York and Pottsville, arriving at Lehigh at 11:00 A.M.

PHILADELPHIA AND SCHUYLKILL RAILROAD. Leaving Philadelphia at 7:00 A.M. for Schuylkill, stopping at New York and Pottsville, arriving at Schuylkill at 11:00 A.M.

PHILADELPHIA AND BERKSHIRE RAILROAD. Leaving Philadelphia at 7:00 A.M. for Berkshire, stopping at New York, Harrisburg, and Altoona, arriving at Berkshire at 11:00 A.M.

PHILADELPHIA AND DELAWARE RAILROAD. Leaving Philadelphia at 7:00 A.M. for Delaware, stopping at New York, Harrisburg, and Altoona, arriving at Delaware at 11:00 A.M.

PHILADELPHIA AND PENNSYLVANIA RAILROAD. Leaving Philadelphia at 7:00 A.M. for Pennsylvania, stopping at New York, Harrisburg, and Altoona, arriving at Pennsylvania at 11:00 A.M.

PHILADELPHIA AND MARYLAND RAILROAD. Leaving Philadelphia at 7:00 A.M. for Maryland, stopping at New York, Baltimore, and Annapolis, arriving at Maryland at 11:00 A.M.

PHILADELPHIA AND VIRGINIA RAILROAD. Leaving Philadelphia at 7:00 A.M. for Virginia, stopping at New York, Baltimore, and Annapolis, arriving at Virginia at 11:00 A.M.

PHILADELPHIA AND NORTH CAROLINA RAILROAD. Leaving Philadelphia at 7:00 A.M. for North Carolina, stopping at New York, Baltimore, and Annapolis, arriving at North Carolina at 11:00 A.M.

PHILADELPHIA AND SOUTH CAROLINA RAILROAD. Leaving Philadelphia at 7:00 A.M. for South Carolina, stopping at New York, Baltimore, and Annapolis, arriving at South Carolina at 11:00 A.M.

PHILADELPHIA AND GEORGIA RAILROAD. Leaving Philadelphia at 7:00 A.M. for Georgia, stopping at New York, Baltimore, and Annapolis, arriving at Georgia at 11:00 A.M.

PHILADELPHIA AND FLORIDA RAILROAD. Leaving Philadelphia at 7:00 A.M. for Florida, stopping at New York, Baltimore, and Annapolis, arriving at Florida at 11:00 A.M.

PHILADELPHIA AND ALABAMA RAILROAD. Leaving Philadelphia at 7:00 A.M. for Alabama, stopping at New York, Baltimore, and Annapolis, arriving at Alabama at 11:00 A.M.

PHILADELPHIA AND MISSISSIPPI RAILROAD. Leaving Philadelphia at 7:00 A.M. for Mississippi, stopping at New York, Baltimore, and Annapolis, arriving at Mississippi at 11:00 A.M.

PHILADELPHIA AND LOUISIANA RAILROAD. Leaving Philadelphia at 7:00 A.M. for Louisiana, stopping at New York, Baltimore, and Annapolis, arriving at Louisiana at 11:00 A.M.

PHILADELPHIA AND TEXAS RAILROAD. Leaving Philadelphia at 7:00 A.M. for Texas, stopping at New York, Baltimore, and Annapolis, arriving at Texas at 11:00 A.M.

PHILADELPHIA AND CALIFORNIA RAILROAD. Leaving Philadelphia at 7:00 A.M. for California, stopping at New York, Baltimore, and Annapolis, arriving at California at 11:00 A.M.

PHILADELPHIA AND ARIZONA RAILROAD. Leaving Philadelphia at 7:00 A.M. for Arizona, stopping at New York, Baltimore, and Annapolis, arriving at Arizona at 11:00 A.M.

PHILADELPHIA AND NEVADA RAILROAD. Leaving Philadelphia at 7:00 A.M. for Nevada, stopping at New York, Baltimore, and Annapolis, arriving at Nevada at 11:00 A.M.

PHILADELPHIA AND IDAHO RAILROAD. Leaving Philadelphia at 7:00 A.M. for Idaho, stopping at New York, Baltimore, and Annapolis, arriving at Idaho at 11:00 A.M.

PHILADELPHIA AND MONTANA RAILROAD. Leaving Philadelphia at 7:00 A.M. for Montana, stopping at New York, Baltimore, and Annapolis, arriving at Montana at 11:00 A.M.

PHILADELPHIA AND WYOMING RAILROAD. Leaving Philadelphia at 7:00 A.M. for Wyoming, stopping at New York, Baltimore, and Annapolis, arriving at Wyoming at 11:00 A.M.

PHILADELPHIA AND COLORADO RAILROAD. Leaving Philadelphia at 7:00 A.M. for Colorado, stopping at New York, Baltimore, and Annapolis, arriving at Colorado at 11:00 A.M.

PHILADELPHIA AND UTAH RAILROAD. Leaving Philadelphia at 7:00 A.M. for Utah, stopping at New York, Baltimore, and Annapolis, arriving at Utah at 11:00 A.M.

PHILADELPHIA AND NEVADA RAILROAD. Leaving Philadelphia at 7:00 A.M. for Nevada, stopping at New York, Baltimore, and Annapolis, arriving at Nevada at 11:00 A.M.

PHILADELPHIA AND CALIFORNIA RAILROAD. Leaving Philadelphia at 7:00 A.M. for California, stopping at New York, Baltimore, and Annapolis, arriving at California at 11:00 A.M.

PHILADELPHIA AND ARIZONA RAILROAD. Leaving Philadelphia at 7:00 A.M. for Arizona, stopping at New York, Baltimore, and Annapolis, arriving at Arizona at 11:00 A.M.

PHILADELPHIA AND NEVADA RAILROAD. Leaving Philadelphia at 7:00 A.M. for Nevada, stopping at New York, Baltimore, and Annapolis, arriving at Nevada at 11:00 A.M.

PHILADELPHIA AND IDAHO RAILROAD. Leaving Philadelphia at 7:00 A.M. for Idaho, stopping at New York, Baltimore, and Annapolis, arriving at Idaho at 11:00 A.M.

PHILADELPHIA AND MONTANA RAILROAD. Leaving Philadelphia at 7:00 A.M. for Montana, stopping at New York, Baltimore, and Annapolis, arriving at Montana at 11:00 A.M.

PHILADELPHIA AND WYOMING RAILROAD. Leaving Philadelphia at 7:00 A.M. for Wyoming, stopping at New York, Baltimore, and Annapolis, arriving at Wyoming at 11:00 A.M.

PHILADELPHIA AND COLORADO RAILROAD. Leaving Philadelphia at 7:00 A.M. for Colorado, stopping at New York, Baltimore, and Annapolis, arriving at Colorado at 11:00 A.M.

PHILADELPHIA AND UTAH RAILROAD. Leaving Philadelphia at 7:00 A.M. for Utah, stopping at New York, Baltimore, and Annapolis, arriving at Utah at 11:00 A.M.

TRAVELING GUIDE.

PHILADELPHIA AND BALTIMORE RAILROAD.

On and after Monday, May 21, 1866, Passenger trains will be run as follows:

MORNING EXPRESS. Leaving Philadelphia at 6:30 A.M. for Baltimore, stopping at Camden, Trenton, and New York, arriving at Baltimore at 11:30 A.M.

AFTERNOON EXPRESS. Leaving Philadelphia at 3:30 P.M. for Baltimore, stopping at Camden, Trenton, and New York, arriving at Baltimore at 7:30 P.M.

CHESTER VALLEY RAILROAD. Leaving Philadelphia at 7:00 A.M. for Lancaster, stopping at Pottsville and Gettysburg, arriving at Lancaster at 11:00 A.M.

PHILADELPHIA AND WASHINGTON RAILROAD. Leaving Philadelphia at 7:00 A.M. for Washington, stopping at New York, Baltimore, and Annapolis, arriving at Washington at 11:00 A.M.

PHILADELPHIA AND PITTSBURGH RAILROAD. Leaving Philadelphia at 7:00 A.M. for Pittsburgh, stopping at New York, Harrisburg, and Altoona, arriving at Pittsburgh at 11:00 A.M.

PHILADELPHIA AND PHOENIX RAILROAD. Leaving Philadelphia at 7:00 A.M. for Phoenix, stopping at New York, Harrisburg, and Altoona, arriving at Phoenix at 11:00 A.M.

PHILADELPHIA AND HARRISBURG RAILROAD. Leaving Philadelphia at 7:00 A.M. for Harrisburg, stopping at New York and Pottsville, arriving at Harrisburg at 11:00 A.M.

PHILADELPHIA AND YORK RAILROAD. Leaving Philadelphia at 7:00 A.M. for York, stopping at New York and Pottsville, arriving at York at 11:00 A.M.

PHILADELPHIA AND LEHIGH RAILROAD. Leaving Philadelphia at 7:00 A.M. for Lehigh, stopping at New York and Pottsville, arriving at Lehigh at 11:00 A.M.

PHILADELPHIA AND SCHUYLKILL RAILROAD. Leaving Philadelphia at 7:00 A.M. for Schuylkill, stopping at New York and Pottsville, arriving at Schuylkill at 11:00 A.M.

PHILADELPHIA AND BERKSHIRE RAILROAD. Leaving Philadelphia at 7:00 A.M. for Berkshire, stopping at New York, Harrisburg, and Altoona, arriving at Berkshire at 11:00 A.M.

PHILADELPHIA AND DELAWARE RAILROAD. Leaving Philadelphia at 7:00 A.M. for Delaware, stopping at New York, Harrisburg, and Altoona, arriving at Delaware at 11:00 A.M.

PHILADELPHIA AND PENNSYLVANIA RAILROAD. Leaving Philadelphia at 7:00 A.M. for Pennsylvania, stopping at New York, Harrisburg, and Altoona, arriving at Pennsylvania at 11:00 A.M.

PHILADELPHIA AND MARYLAND RAILROAD. Leaving Philadelphia at 7:00 A.M. for Maryland, stopping at New York, Baltimore, and Annapolis, arriving at Maryland at 11:00 A.M.

PHILADELPHIA AND VIRGINIA RAILROAD. Leaving Philadelphia at 7:00 A.M. for Virginia, stopping at New York, Baltimore, and Annapolis, arriving at Virginia at 11:00 A.M.

PHILADELPHIA AND NORTH CAROLINA RAILROAD. Leaving Philadelphia at 7:00 A.M. for North Carolina, stopping at New York, Baltimore, and Annapolis, arriving at North Carolina at 11:00 A.M.

PHILADELPHIA AND SOUTH CAROLINA RAILROAD. Leaving Philadelphia at 7:00 A.M. for South Carolina, stopping at New York, Baltimore, and Annapolis, arriving at South Carolina at 11:00 A.M.

PHILADELPHIA AND GEORGIA RAILROAD. Leaving Philadelphia at 7:00 A.M. for Georgia, stopping at New York, Baltimore, and Annapolis, arriving at Georgia at 11:00 A.M.

PHILADELPHIA AND FLORIDA RAILROAD. Leaving Philadelphia at 7:00 A.M. for Florida, stopping at New York, Baltimore, and Annapolis, arriving at Florida at 11:00 A.M.

PHILADELPHIA AND ALABAMA RAILROAD. Leaving Philadelphia at 7:00 A.M. for Alabama, stopping at New York, Baltimore, and Annapolis, arriving at Alabama at 11:00 A.M.

PHILADELPHIA AND MISSISSIPPI RAILROAD. Leaving Philadelphia at 7:00 A.M. for Mississippi, stopping at New York, Baltimore, and Annapolis, arriving at Mississippi at 11:00 A.M.

PHILADELPHIA AND LOUISIANA RAILROAD. Leaving Philadelphia at 7:00 A.M. for Louisiana, stopping at New York, Baltimore, and Annapolis, arriving at Louisiana at 11:00 A.M.

PHILADELPHIA AND TEXAS RAILROAD. Leaving Philadelphia at 7:00 A.M. for Texas, stopping at New York, Baltimore, and Annapolis, arriving at Texas at 11:00 A.M.

PHILADELPHIA AND CALIFORNIA RAILROAD. Leaving Philadelphia at 7:00 A.M. for California, stopping at New York, Baltimore, and Annapolis, arriving at California at 11:00 A.M.

PHILADELPHIA AND ARIZONA RAILROAD. Leaving Philadelphia at 7:00 A.M. for Arizona, stopping at New York, Baltimore, and Annapolis, arriving at Arizona at 11:00 A.M.

PHILADELPHIA AND NEVADA RAILROAD. Leaving Philadelphia at 7:00 A.M. for Nevada, stopping at New York, Baltimore, and Annapolis, arriving at Nevada at 11:00 A.M.

PHILADELPHIA AND IDAHO RAILROAD. Leaving Philadelphia at 7:00 A.M. for Idaho, stopping at New York, Baltimore, and Annapolis, arriving at Idaho at 11:00 A.M.

PHILADELPHIA AND MONTANA RAILROAD. Leaving Philadelphia at 7:00 A.M. for Montana, stopping at New York, Baltimore, and Annapolis, arriving at Montana at 11:00 A.M.

PHILADELPHIA AND WYOMING RAILROAD. Leaving Philadelphia at 7:00 A.M. for Wyoming, stopping at New York, Baltimore, and Annapolis, arriving at Wyoming at 11:00 A.M.

PHILADELPHIA AND COLORADO RAILROAD. Leaving Philadelphia at 7:00 A.M. for Colorado, stopping at New York, Baltimore, and Annapolis, arriving at Colorado at 11:00 A.M.

PHILADELPHIA AND UTAH RAILROAD. Leaving Philadelphia at 7:00 A.M. for Utah, stopping at New York, Baltimore, and Annapolis, arriving at Utah at 11:00 A.M.

PHILADELPHIA AND NEVADA RAILROAD. Leaving Philadelphia at 7:00 A.M. for Nevada, stopping at New York, Baltimore, and Annapolis, arriving at Nevada at 11:00 A.M.

PHILADELPHIA AND CALIFORNIA RAILROAD. Leaving Philadelphia at 7:00 A.M. for California, stopping at New York, Baltimore, and Annapolis, arriving at California at 11:00 A.M.

PHILADELPHIA AND ARIZONA RAILROAD. Leaving Philadelphia at 7:00 A.M. for Arizona, stopping at New York, Baltimore, and Annapolis, arriving at Arizona at 11:00 A.M.

PHILADELPHIA AND NEVADA RAILROAD. Leaving Philadelphia at 7:00 A.M. for Nevada, stopping at New York, Baltimore, and Annapolis, arriving at Nevada at 11:00 A.M.

PHILADELPHIA AND IDAHO RAILROAD. Leaving Philadelphia at 7:00 A.M. for Idaho, stopping at New York, Baltimore, and Annapolis, arriving at Idaho at 11:00 A.M.

PHILADELPHIA AND MONTANA RAILROAD. Leaving Philadelphia at 7:00 A.M. for Montana, stopping at New York, Baltimore, and Annapolis, arriving at Montana at 11:00 A.M.

PHILADELPHIA AND WYOMING RAILROAD. Leaving Philadelphia at 7:00 A.M. for Wyoming, stopping at New York, Baltimore, and Annapolis, arriving at Wyoming at 11:00 A.M.

PHILADELPHIA AND COLORADO RAILROAD. Leaving Philadelphia at 7:00 A.M. for Colorado, stopping at New York, Baltimore, and Annapolis, arriving at Colorado at 11:00 A.M.

PHILADELPHIA AND UTAH RAILROAD. Leaving Philadelphia at 7:00 A.M. for Utah, stopping at New York, Baltimore, and Annapolis, arriving at Utah at 11:00 A.M.

TRAVELING GUIDE.

PHILADELPHIA AND BALTIMORE RAILROAD.

On and after Monday, May 21, 1866, Passenger trains will be run as follows:

MORNING EXPRESS. Leaving Philadelphia at 6:30 A.M. for Baltimore, stopping at Camden, Trenton, and New York, arriving at Baltimore at 11:30 A.M.

AFTERNOON EXPRESS. Leaving Philadelphia at 3:30 P.M. for Baltimore, stopping at Camden, Trenton, and New York, arriving at Baltimore at 7:30 P.M.

CHESTER VALLEY RAILROAD. Leaving Philadelphia at 7:00 A.M. for Lancaster, stopping at Pottsville and Gettysburg, arriving at Lancaster at 11:00 A.M.

PHILADELPHIA AND WASHINGTON RAILROAD. Leaving Philadelphia at 7:00 A.M. for Washington, stopping at New York, Baltimore, and Annapolis, arriving at Washington at 11:00 A.M.

PHILADELPHIA AND PITTSBURGH RAILROAD. Leaving Philadelphia at 7:00 A.M. for Pittsburgh, stopping at New York, Harrisburg, and Altoona, arriving at Pittsburgh at 11:00 A.M.

PHILADELPHIA AND PHOENIX RAILROAD. Leaving Philadelphia at 7:00 A.M. for Phoenix, stopping at New York, Harrisburg, and Altoona, arriving at Phoenix at 11:00 A.M.