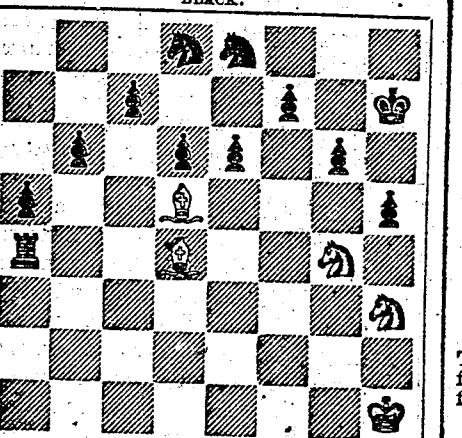


CHESSE COLUMN

PHILADELPHIA EVENING BULLETIN, FRIDAY, June 29, 1886.
All communications for this column must be directed to "Chess Editor of Evening Bulletin," and should reach the office, at latest, on Thursday morning. All Problems must be accompanied by the solution and name of the composer.

Answers to Correspondents.
"STUDENT."—The following list comprises all the Philadelphia players, and the number of their games, which have appeared in our Column since its commencement, in October, 1885:
Bennett, E. 1
Bierck, Courmann 1
Bull 1
Clemens 1
Darling 1
Derrickson 1
Eberhart 1
Fisher 1
Graham 1
Haines 1
Henderson 1
Hoffman 1
Jellison 1
Klein 1
Leland 1
Macdonald 1
McCurdy 1
Merrill 1
Montgomery, H. C. 1

"MADDOUS."—Since your adversary does not submit to the laws of the game, you had better leave him to play with persons of his own calibre.



The white Knights penetrate the initial camp, expel the black King, and administer the coup de grace in two moves.

Solution to No. 436.
1. P to R3 (ch) K to R4
2. P to K4 (ch) K to R3
3. K to K6 R to Q B sq
4. P to Q4 R to K moves
5. Kt mates.

Solution to No. 437.
1. Q to R5 (ch) Q to R6 (ch)
2. Q x Q (ch) P x Q
3. K to K4 P to Q4
4. K to K6 K to B5
5. K to B2 K to R6
6. K to K4 K to B7
7. K to B sq P to B6
8. K x P K to K5
9. K to Q sq P to K5
10. K to B sq P to K6 (ch)
11. K x P

Solution to No. 438.
1. P to K4 (ch) K to Q4
2. R to K (ch) K x R
3. Q x P (ch) K x Q
4. B to Q mate.

CHESSE IN PHILADELPHIA.
Game No. 1386.
Another game in which Mr. J. A. Leonard gives a pawn and move to Mr. W. (Remove Black's King's Bishop's Pawn.)
W. (Mr. W.) Bl. (Mr. LEONARD).
1. P to K4 P to K3
2. P to Q4 P to Q3
3. P to Q3 K to R2
4. B to Q2 K to K3
5. K to K B3 Castles
6. P to Q5
7. P to Q5

CHESSE IN LONDON.
Game No. 1387.
Between Mr. Lowenthal, giving Knight, and Mr. Mann.
(Remove White's Queen's Knight.)
W. (Mr. LOWENTHAL) Bl. (Mr. MANN).
1. P to K4 P to K4
2. K to B3 Q to B3
3. B to K5 P to R3
4. B to R4 K to K B3
5. Castles P to K4
6. P to K3 B to B4
7. P to B3 P to Q3
8. P to Q4 B to K3
9. B to K5 Castles
10. P to Q4 Q to K2
11. K to R4 Q to K sq
12. K to K2 K x B (ch)
13. Q to K3 P x P
14. Q to K4

(Attaching undue importance to the discovered check on the next move.)

15. P to K B4 P x P (dis ch)
16. K to R sq Q to K2
17. K to B5 K x P
18. B x K1 Q x B
19. B to B6, and wins.

CHESSE IN PARIS.
Game No. 1388.
Between Messrs. Journaud and de Riviere.
W. (M. JOURNAUD) Bl. (M. DE RIVIERE).
1. P to K4 P to K4
2. K to K B3 K to B3
3. B to Q B4 Q to B4
4. P to Q3 P to Q3
5. P to K R3 Castles
6. Q to K B3 P to Q B3
7. B to K R5 P to K B3
8. K to Q5 P x K
9. K x K1 (ch) K to K3
10. B to K R4 K to K3
11. K to R2 P to Q4
12. K to K K14

(Cleverly played. If the pawn takes Bishop, white Bishop takes K B pawn, and Black must lose his Queen, or be mated on the next move.)
12. K to K14
13. P x P P x P
14. B to Q K13 B to K3
15. B to K13 K x B
16. K to K P B x Q
17. K to K B3 B x Q K P
18. R to Q K sq B to B6 (ch)
19. B to B6 P to K B3
20. K to K R sq P to K K4
21. P to Q R4 P x R
22. B x P Q to Q R4
23. B to K R3 K to B3
24. Q to K K2 B to K B3
25. K to K2 B to K4
26. K to Q P B to K4
27. B x B (ch) P x K12
28. R x Q P x R
29. B x R R x B
30. P to K K13 R to Q R7
31. P to K P P x P
32. P to Q B3 P x P
33. P x P K to K13
34. R to K K13 (ch) K to B4
35. K to K13 R to Q7
36. K to Q mate.

(Again well played. White now wins a pawn, with an excellent game.)

Game No. 1389.
Between the same players.
W. (M. JOURNAUD) Bl. (M. DE RIVIERE).
1. P to K4 P to K4
2. K to K B3 Q to K B3
3. K to K6 P to B4
4. K to B2 P to Q3
5. P to Q3 P to Q3
6. P to K R3 P to K R3
7. K to K2 Castles
8. K to K2 B to K3
9. B to K13 B x B
10. P to B3

(He should have taken with the pawn. The move made with the Queen from the immediate square, lays the foundation for White's defeat.)
11. B to K13
12. K to K13 K to R2
13. K to B5 K to K1 sq
14. P to B5 K to K1 sq
15. K to B5 K to K1 sq
16. P to B5 K to K1 sq
17. K to B5 K to K1 sq
18. K to B5 K to K1 sq
19. K to B5 K to K1 sq
20. Q to H4 K to B7
21. K to K2 R to K K1 sq
22. K to K2 K to K1 sq
23. K to K2 K to K1 sq
24. Q to K4 (ch) K to R3
25. Q to K4 (ch) K to B3
26. Q to K4 (ch) K to B3

CHESSE IN RUSSIA.
Game No. 1390.
Kousinoff's masterly contention against Mr. Hirschfeld, winning 2, losing 1, and drawing 2 games. The following is one of the series:
(Evans' Gambit.)
W. (HIRSCHFELD) Bl. (K. OUSIROFF).
1. P to K4 P to K4
2. K to K B3 K to Q B3
3. P to Q B4 B to Q B4
4. P to Q3 K to K B3
5. P to Q3 K to K B3
6. Castles Q to K2
7. P to Q4 B to Q3
8. P to Q4 B to Q3
9. P to Q4 B to Q3
10. Q to B2 K to R6
11. K to B4 K to B7
12. Castles (K R) P to Q K14
13. P x P R x Kt
14. P x R P to B6
15. B to K4 B x P (ch)
16. K to K2 B x K4
17. Q to Q2 P x P
18. R to K R sq P to K15
19. K to K2 K to R3
20. Q to K4 K x B (ch)
21. Q to K4 K x B (ch)
22. P x K, and Black resigned.

GEO. A. COOKE,
No. 1314 Washington avenue.
invites the attention of the Public to his PESTERON COAL, which is an article that gives unbounded satisfaction to all. My customers generally are laying in at the present prices, in preference to the regular COAL. Egg and Stove sizes at 75 per ton. Also the finest Eagle Brand coal, same size, same price. A superior quality of LUMBER COAL. Also the best quality of LUMBER COAL. Also the best quality of LUMBER COAL.

CHESSE IN LONDON.
Game No. 1391.
Between Mr. Lowenthal, giving Knight, and Mr. Mann.
(Remove White's Queen's Knight.)
W. (Mr. LOWENTHAL) Bl. (Mr. MANN).
1. P to K4 P to K4
2. K to B3 Q to B3
3. B to K5 P to R3
4. B to R4 K to K B3
5. Castles P to K4
6. P to K3 B to B4
7. P to B3 P to Q3
8. P to Q4 B to K3
9. B to K5 Castles
10. P to Q4 Q to K2
11. K to R4 Q to K sq
12. K to K2 K x B (ch)
13. Q to K3 P x P
14. Q to K4

(Attaching undue importance to the discovered check on the next move.)

(Attaching undue importance to the discovered check on the next move.)

TRAVELING GUIDE.

READING RAILROAD.
PHILADELPHIA TO THE DEPOT OF THE P. & W. M. RAILROAD.
PHILADELPHIA TO THE DEPOT OF THE P. & W. M. RAILROAD.
PHILADELPHIA TO THE DEPOT OF THE P. & W. M. RAILROAD.

MORNING EXPRESS.
Leave Philadelphia at 7:30 P. M. for Reading, Pottsville, Harrisburg, etc., connecting with Reading and Pottsville.
Leave Philadelphia at 8:00 P. M. for Reading, Pottsville, Harrisburg, etc., connecting with Reading and Pottsville.

AFTERNOON EXPRESS.
Leave Philadelphia at 1:30 P. M. for Reading, Pottsville, Harrisburg, etc., connecting with Reading and Pottsville.
Leave Philadelphia at 2:00 P. M. for Reading, Pottsville, Harrisburg, etc., connecting with Reading and Pottsville.

COMMUTATION TICKETS.
Good for 30 days between all points, at 75 cents.
Good for 60 days between all points, at \$1.00.
Good for 90 days between all points, at \$1.25.

PHILADELPHIA AND WASHINGTON RAILROAD.
PHILADELPHIA TO WASHINGTON.
PHILADELPHIA TO WASHINGTON.
PHILADELPHIA TO WASHINGTON.

PITTSBURGH AND CINCINNATI RAILROAD.
PHILADELPHIA TO PITTSBURGH.
PHILADELPHIA TO PITTSBURGH.
PHILADELPHIA TO PITTSBURGH.

PHILADELPHIA AND BALTIMORE RAILROAD.
PHILADELPHIA TO BALTIMORE.
PHILADELPHIA TO BALTIMORE.
PHILADELPHIA TO BALTIMORE.

PHILADELPHIA AND WASHINGTON RAILROAD.
PHILADELPHIA TO WASHINGTON.
PHILADELPHIA TO WASHINGTON.
PHILADELPHIA TO WASHINGTON.

PHILADELPHIA AND BALTIMORE RAILROAD.
PHILADELPHIA TO BALTIMORE.
PHILADELPHIA TO BALTIMORE.
PHILADELPHIA TO BALTIMORE.

TRAVELING GUIDE.

NORTH PENNSYLVANIA RAILROAD.
PHILADELPHIA TO PITTSBURGH.
PHILADELPHIA TO PITTSBURGH.
PHILADELPHIA TO PITTSBURGH.

MORNING EXPRESS.
Leave Philadelphia at 7:30 P. M. for Reading, Pottsville, Harrisburg, etc., connecting with Reading and Pottsville.
Leave Philadelphia at 8:00 P. M. for Reading, Pottsville, Harrisburg, etc., connecting with Reading and Pottsville.

AFTERNOON EXPRESS.
Leave Philadelphia at 1:30 P. M. for Reading, Pottsville, Harrisburg, etc., connecting with Reading and Pottsville.
Leave Philadelphia at 2:00 P. M. for Reading, Pottsville, Harrisburg, etc., connecting with Reading and Pottsville.

COMMUTATION TICKETS.
Good for 30 days between all points, at 75 cents.
Good for 60 days between all points, at \$1.00.
Good for 90 days between all points, at \$1.25.

PHILADELPHIA AND WASHINGTON RAILROAD.
PHILADELPHIA TO WASHINGTON.
PHILADELPHIA TO WASHINGTON.
PHILADELPHIA TO WASHINGTON.

PITTSBURGH AND CINCINNATI RAILROAD.
PHILADELPHIA TO PITTSBURGH.
PHILADELPHIA TO PITTSBURGH.
PHILADELPHIA TO PITTSBURGH.

PHILADELPHIA AND BALTIMORE RAILROAD.
PHILADELPHIA TO BALTIMORE.
PHILADELPHIA TO BALTIMORE.
PHILADELPHIA TO BALTIMORE.

PHILADELPHIA AND WASHINGTON RAILROAD.
PHILADELPHIA TO WASHINGTON.
PHILADELPHIA TO WASHINGTON.
PHILADELPHIA TO WASHINGTON.

PHILADELPHIA AND BALTIMORE RAILROAD.
PHILADELPHIA TO BALTIMORE.
PHILADELPHIA TO BALTIMORE.
PHILADELPHIA TO BALTIMORE.

TRAVELING GUIDE.

PHILADELPHIA AND WASHINGTON RAILROAD.
PHILADELPHIA TO WASHINGTON.
PHILADELPHIA TO WASHINGTON.
PHILADELPHIA TO WASHINGTON.

MORNING EXPRESS.
Leave Philadelphia at 7:30 P. M. for Reading, Pottsville, Harrisburg, etc., connecting with Reading and Pottsville.
Leave Philadelphia at 8:00 P. M. for Reading, Pottsville, Harrisburg, etc., connecting with Reading and Pottsville.

AFTERNOON EXPRESS.
Leave Philadelphia at 1:30 P. M. for Reading, Pottsville, Harrisburg, etc., connecting with Reading and Pottsville.
Leave Philadelphia at 2:00 P. M. for Reading, Pottsville, Harrisburg, etc., connecting with Reading and Pottsville.

COMMUTATION TICKETS.
Good for 30 days between all points, at 75 cents.
Good for 60 days between all points, at \$1.00.
Good for 90 days between all points, at \$1.25.

PHILADELPHIA AND WASHINGTON RAILROAD.
PHILADELPHIA TO WASHINGTON.
PHILADELPHIA TO WASHINGTON.
PHILADELPHIA TO WASHINGTON.

PITTSBURGH AND CINCINNATI RAILROAD.
PHILADELPHIA TO PITTSBURGH.
PHILADELPHIA TO PITTSBURGH.
PHILADELPHIA TO PITTSBURGH.

PHILADELPHIA AND BALTIMORE RAILROAD.
PHILADELPHIA TO BALTIMORE.
PHILADELPHIA TO BALTIMORE.
PHILADELPHIA TO BALTIMORE.

PHILADELPHIA AND WASHINGTON RAILROAD.
PHILADELPHIA TO WASHINGTON.
PHILADELPHIA TO WASHINGTON.
PHILADELPHIA TO WASHINGTON.

PHILADELPHIA AND BALTIMORE RAILROAD.
PHILADELPHIA TO BALTIMORE.
PHILADELPHIA TO BALTIMORE.
PHILADELPHIA TO BALTIMORE.

LEGAL NOTICES.

IN THE DISTRICT COURT FOR THE CITY AND COUNTY OF PHILADELPHIA.
SARAH LUKINS KERR vs. PHILADELPHIA RAILROAD COMPANY.
SARAH LUKINS KERR vs. PHILADELPHIA RAILROAD COMPANY.

IN THE DISTRICT COURT FOR THE CITY AND COUNTY OF PHILADELPHIA.
SARAH LUKINS KERR vs. PHILADELPHIA RAILROAD COMPANY.
SARAH LUKINS KERR vs. PHILADELPHIA RAILROAD COMPANY.

IN THE DISTRICT COURT FOR THE CITY AND COUNTY OF PHILADELPHIA.
SARAH LUKINS KERR vs. PHILADELPHIA RAILROAD COMPANY.
SARAH LUKINS KERR vs. PHILADELPHIA RAILROAD COMPANY.

IN THE DISTRICT COURT FOR THE CITY AND COUNTY OF PHILADELPHIA.
SARAH LUKINS KERR vs. PHILADELPHIA RAILROAD COMPANY.
SARAH LUKINS KERR vs. PHILADELPHIA RAILROAD COMPANY.

IN THE DISTRICT COURT FOR THE CITY AND COUNTY OF PHILADELPHIA.
SARAH LUKINS KERR vs. PHILADELPHIA RAILROAD COMPANY.
SARAH LUKINS KERR vs. PHILADELPHIA RAILROAD COMPANY.

IN THE DISTRICT COURT FOR THE CITY AND COUNTY OF PHILADELPHIA.
SARAH LUKINS KERR vs. PHILADELPHIA RAILROAD COMPANY.
SARAH LUKINS KERR vs. PHILADELPHIA RAILROAD COMPANY.

IN THE DISTRICT COURT FOR THE CITY AND COUNTY OF PHILADELPHIA.
SARAH LUKINS KERR vs. PHILADELPHIA RAILROAD COMPANY.
SARAH LUKINS KERR vs. PHILADELPHIA RAILROAD COMPANY.

IN THE DISTRICT COURT FOR THE CITY AND COUNTY OF PHILADELPHIA.
SARAH LUKINS KERR vs. PHILADELPHIA RAILROAD COMPANY.
SARAH LUKINS KERR vs. PHILADELPHIA RAILROAD COMPANY.

IN THE DISTRICT COURT FOR THE CITY AND COUNTY OF PHILADELPHIA.
SARAH LUKINS KERR vs. PHILADELPHIA RAILROAD COMPANY.
SARAH LUKINS KERR vs. PHILADELPHIA RAILROAD COMPANY.