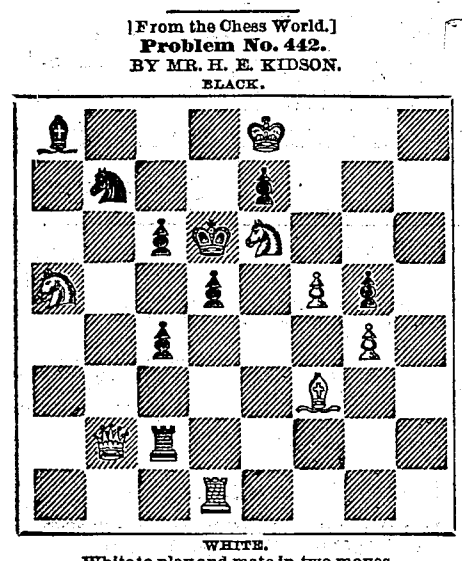


CHESSE COLUMN OF THE PHILADELPHIA EVENING BULLETIN. FRIDAY, June 22, 1866.

All communications for this column must be directed to Chess Editor of Evening Bulletin, and should reach the office, at latest, on Thursday morning. All problems must be accompanied by the solution and name of the composer.



White to play and make two moves. CHESS IN PHILADELPHIA. Game No. 1378.

Played in 1861, Mr. J. A. Leonard, of New York, giving pawn and move to Mr. W. (Remove Black's King's Bishop's Pawn.)

CHESS IN NEW YORK. Game No. 1379. Capt. Mackenzie gives the King's Knight to Mr. Roser, a young Philadelphia player.

CHESS IN LONDON. Game No. 1380. Recently played between Messrs. Bird and McDonnell.

CHESS IN LONDON. Game No. 1381. Between the same players. (Evans' Gambit.)

WANTS. DOSE LEAVES WANTED—Highest cash prices for fresh leaves from CHARLES BELLS...

22. R x K B P Q to Q K 8 (ch) 23. K to K 2 Q x R 24. Q to R 5 Q to K 5 (ch) 25. Q x Q 26. K to R 3 B to Q sq 27. K to K 4 K to K 3, and won the game.—London News.

CHESS IN PARIS. Game No. 1382. Between Messrs. Baucher and Durantel. (Algebraic Gambit.)

CHESS IN GERMANY. Game No. 1383. The following game was played by Mr. A. Schiller against four other players in consultation.

CHESS IN GERMANY. Game No. 1384. Between Messrs. Recci and Lustig. (Bishop's Gambit.)

CHESS IN GERMANY. Game No. 1385. Between Mr. Moritz and an Amateur. (Philidor's Defence.)

JAPANESE POWHONG TEA. The finest ever imported. OOLONG TEA, DRAGON CHOP, the highest grade known, and every other description of tea procurable.

GENUINE ITALIAN PASTINES, MACARONI & Vermicelli, in store and for sale at COUSBY'S...

WANTS. DOSE LEAVES WANTED—Highest cash prices for fresh leaves from CHARLES BELLS...

TRAVELING GUIDE.

READING RAILROAD. PHILADELPHIA TO THE INTERIOR OF PENNSYLVANIA AND WYOMING VALLEYS. PHILADELPHIA TO THE INTERIOR OF PENNSYLVANIA AND WYOMING VALLEYS.

CHESTER VALLEY RAILROAD. Passengers for Downingtown and intermediate stations...

PHILADELPHIA, WILMINGTON AND BALTIMORE RAILROAD. PHILADELPHIA TO THE INTERIOR OF PENNSYLVANIA AND WYOMING VALLEYS.

PHILADELPHIA, WILMINGTON AND BALTIMORE RAILROAD. PHILADELPHIA TO THE INTERIOR OF PENNSYLVANIA AND WYOMING VALLEYS.

PHILADELPHIA, WILMINGTON AND BALTIMORE RAILROAD. PHILADELPHIA TO THE INTERIOR OF PENNSYLVANIA AND WYOMING VALLEYS.

PHILADELPHIA, WILMINGTON AND BALTIMORE RAILROAD. PHILADELPHIA TO THE INTERIOR OF PENNSYLVANIA AND WYOMING VALLEYS.

TRAVELING GUIDE.

PENNSYLVANIA CENTRAL RAILROAD. PHILADELPHIA TO THE INTERIOR OF PENNSYLVANIA AND WYOMING VALLEYS.

PENNSYLVANIA CENTRAL RAILROAD. PHILADELPHIA TO THE INTERIOR OF PENNSYLVANIA AND WYOMING VALLEYS.

PENNSYLVANIA CENTRAL RAILROAD. PHILADELPHIA TO THE INTERIOR OF PENNSYLVANIA AND WYOMING VALLEYS.

PENNSYLVANIA CENTRAL RAILROAD. PHILADELPHIA TO THE INTERIOR OF PENNSYLVANIA AND WYOMING VALLEYS.

PENNSYLVANIA CENTRAL RAILROAD. PHILADELPHIA TO THE INTERIOR OF PENNSYLVANIA AND WYOMING VALLEYS.

PENNSYLVANIA CENTRAL RAILROAD. PHILADELPHIA TO THE INTERIOR OF PENNSYLVANIA AND WYOMING VALLEYS.

TRAVELING GUIDE.

PENNSYLVANIA CENTRAL RAILROAD. PHILADELPHIA TO THE INTERIOR OF PENNSYLVANIA AND WYOMING VALLEYS.

PENNSYLVANIA CENTRAL RAILROAD. PHILADELPHIA TO THE INTERIOR OF PENNSYLVANIA AND WYOMING VALLEYS.

PENNSYLVANIA CENTRAL RAILROAD. PHILADELPHIA TO THE INTERIOR OF PENNSYLVANIA AND WYOMING VALLEYS.

PENNSYLVANIA CENTRAL RAILROAD. PHILADELPHIA TO THE INTERIOR OF PENNSYLVANIA AND WYOMING VALLEYS.

PENNSYLVANIA CENTRAL RAILROAD. PHILADELPHIA TO THE INTERIOR OF PENNSYLVANIA AND WYOMING VALLEYS.

PENNSYLVANIA CENTRAL RAILROAD. PHILADELPHIA TO THE INTERIOR OF PENNSYLVANIA AND WYOMING VALLEYS.

DRUGS.

PURE LIBERTY WHITE LEAD. THE BEST IN THE MARKET. PURE LIBERTY WHITE LEAD. Try it and be convinced.

PURE LIBERTY WHITE LEAD. Satisfaction guaranteed by the Manufacturer. ZIEGLER & SMITH, Wholesale Drug, Paint and Glass Dealers.

LEGAL NOTICES. IN THE ORPHANS COURT FOR THE CITY AND COUNTY OF PHILADELPHIA.

LEGAL NOTICES. IN THE ORPHANS COURT FOR THE CITY AND COUNTY OF PHILADELPHIA.

LEGAL NOTICES. IN THE ORPHANS COURT FOR THE CITY AND COUNTY OF PHILADELPHIA.

LEGAL NOTICES. IN THE ORPHANS COURT FOR THE CITY AND COUNTY OF PHILADELPHIA.