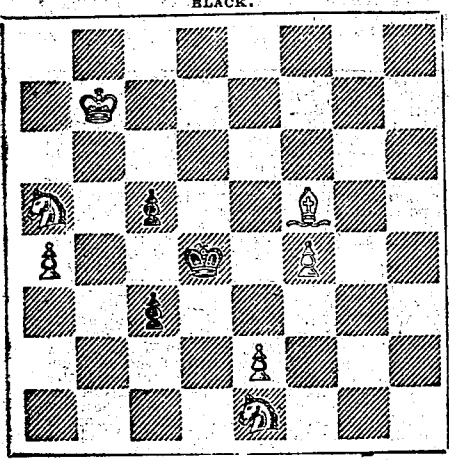


CHESSE COLUMN OF THE PHILADELPHIA EVENING BULLETIN. FRIDAY, June 8, 1866.

All communications for this column must be directed to Chess Editor of EVENING BULLETIN, and should reach the office, at latest, on Thursday morning. All Problems must be accompanied by the solution and name of the composer.

Problem No. 140. BY MR. A. G. HEATON. BLACK.



White to play and mate in three moves.

CHESSE IN PHILADELPHIA.

Bagatelle between Mr. Reichhelm, giving Knight, and Mr. H., of the Mercantile Library. (Remove White's Queen's Knight.) (Evans' Gambit.)

Chess in New York. Between Messrs. Warner and Wheelwright. Game No. 1365. (Remove White's Queen's Knight.)

Chess in London. A lively skirmish between Messrs. Barnes and Owen. (Sicilian Opening.)

Chess in Germany. Played between Dr. Bleadow and Mr. v. Voigt. (French Opening.)

Chess in Paris. Played many years ago, M. Deschappelles giving the pawn and two moves to Mr. Cochrane. (Remove Black's King's Bishop's Pawn.)

Chess problems and solutions, including 'Problem No. 1399' and 'Problem No. 1370'.

Chess in Philadelphia. Bagatelle between Mr. Reichhelm, giving Knight, and Mr. H., of the Mercantile Library.

Chess in New York. Between Messrs. Warner and Wheelwright. Game No. 1365.

Chess in London. A lively skirmish between Messrs. Barnes and Owen.

Chess in Germany. Played between Dr. Bleadow and Mr. v. Voigt.

Chess in Paris. Played many years ago, M. Deschappelles giving the pawn and two moves to Mr. Cochrane.

TRAVELING GUIDE.

TRAVELING GUIDE. PHILADELPHIA, WILMINGTON AND BALTIMORE. PHILADELPHIA, WILMINGTON AND BALTIMORE. PHILADELPHIA, WILMINGTON AND BALTIMORE.

TRAVELING GUIDE.

TRAVELING GUIDE. PHILADELPHIA, WILMINGTON AND BALTIMORE. PHILADELPHIA, WILMINGTON AND BALTIMORE. PHILADELPHIA, WILMINGTON AND BALTIMORE.

TRAVELING GUIDE.

TRAVELING GUIDE. PHILADELPHIA, WILMINGTON AND BALTIMORE. PHILADELPHIA, WILMINGTON AND BALTIMORE. PHILADELPHIA, WILMINGTON AND BALTIMORE.

SHIPPING.

SHIPPING. Via Delaware and Baritan Canal. Steamship Company. Steam Propellers leave DAILY from Philadelphia and New York.

TRAVELING GUIDE.

TRAVELING GUIDE. PHILADELPHIA, WILMINGTON AND BALTIMORE. PHILADELPHIA, WILMINGTON AND BALTIMORE. PHILADELPHIA, WILMINGTON AND BALTIMORE.

TRAVELING GUIDE.

TRAVELING GUIDE. PHILADELPHIA, WILMINGTON AND BALTIMORE. PHILADELPHIA, WILMINGTON AND BALTIMORE. PHILADELPHIA, WILMINGTON AND BALTIMORE.

TRAVELING GUIDE.

TRAVELING GUIDE. PHILADELPHIA, WILMINGTON AND BALTIMORE. PHILADELPHIA, WILMINGTON AND BALTIMORE. PHILADELPHIA, WILMINGTON AND BALTIMORE.

SHIPPING.

SHIPPING. Via Delaware and Baritan Canal. Steamship Company. Steam Propellers leave DAILY from Philadelphia and New York.

TRAVELING GUIDE.

TRAVELING GUIDE. PHILADELPHIA, WILMINGTON AND BALTIMORE. PHILADELPHIA, WILMINGTON AND BALTIMORE. PHILADELPHIA, WILMINGTON AND BALTIMORE.

TRAVELING GUIDE.

TRAVELING GUIDE. PHILADELPHIA, WILMINGTON AND BALTIMORE. PHILADELPHIA, WILMINGTON AND BALTIMORE. PHILADELPHIA, WILMINGTON AND BALTIMORE.

TRAVELING GUIDE.

TRAVELING GUIDE. PHILADELPHIA, WILMINGTON AND BALTIMORE. PHILADELPHIA, WILMINGTON AND BALTIMORE. PHILADELPHIA, WILMINGTON AND BALTIMORE.

SHIPPING.

SHIPPING. Via Delaware and Baritan Canal. Steamship Company. Steam Propellers leave DAILY from Philadelphia and New York.