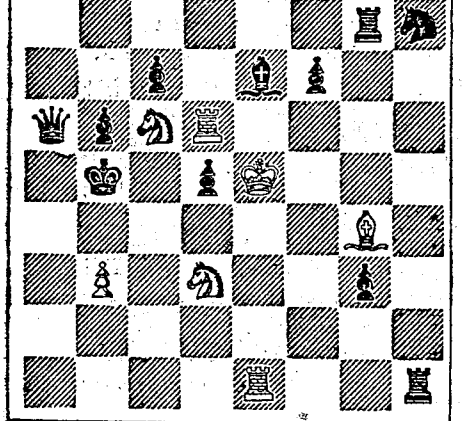


CHESS COLUMN

PHILADELPHIA EVENING BULLETIN. FRIDAY, June 1, 1886. All communications for this column must be directed to the Editor of the Evening Bulletin...

There have been various statements about the Chess Column in different parts of the country in regard to a return match between Messrs. Reichel and Mackenzie. It may be proper to state that no definite arrangements of the kind have been made at this season of the year...

Problem No. 439. BY MR. R. RABSON. BLACK.



White to play and mate in three moves. Solution to No. 431. WHITE. BLACK. 1. P to Q7. 2. B to B5, and mates next move.

Solution to No. 432. WHITE. BLACK. 1. Q to B5. 2. B to P. 3. Q x P mate. (A)

Solution to No. 433. WHITE. BLACK. 1. P to K4. 2. K to B3. 3. P to B5 mate. (A)

Solution to No. 434. WHITE. BLACK. 1. B to A4, and mates next move. CHESS IN PHILADELPHIA. Game No. 1355. Between Mr. Warner, giving the Knight, and Mr. ...

CHESS IN LONDON. Game No. 1356. By request, we give some specimens of the play of Messrs. Atwood and Wilson, two of Philidor's contemporaries.

WH. (Mr. Atwood). BL. (Mr. Wilson). 1. P to K4. 2. K to B3. 3. P to Q4. (A rather dangerous reply.)

8. K to K5. 9. Q to K5. 10. P to K5. 11. K to B3. 12. R to K5. 13. P to K5. 14. P to K5. 15. K to K5. (This decides the skirmish.)

Game No. 1357. Between the same players. (Philidor's Defence). WH. (Mr. Atwood). BL. (Mr. Wilson).

13. B to B4. 14. B to K3. 15. K to P. (This decides the skirmish.) 16. K to B6. 17. K to R. 18. P to K7. 19. P to K7. (ch), and wins.

Game No. 1358. Between the same players. (Philidor's Defence). WH. (Mr. Atwood). BL. (Mr. Wilson).

13. B to B4. 14. B to K3. 15. K to K5. (Very neat and conclusive.) 16. B x P. 17. B x K. 18. Q x P. 19. P x B. 20. P x B. 21. Q to K4. (ch), and wins.

Game No. 1359. Between the same players. (Philidor's Defence). WH. (Mr. Atwood). BL. (Mr. Wilson).

14. Q x P. 15. P x B. 16. Castles. 17. K to K5. 18. R to Q7. (These games are especially instructive to the young player, as they effectively show the advantage of position over brute force.)

Game No. 1360. Between the same players. (Philidor's Defence). WH. (Mr. Atwood). BL. (Mr. Wilson).

13. B to B4. 14. B to K3. 15. P to Q4. (15. K to K5, as played by White in a previous game, is at once conclusive.) 16. Q x K P. 17. P x B. 18. B to R2. 19. Castles. 20. Q to B4. 21. K to R5. 22. Q to B4. Mr. Atwood mates in three moves.

CHESS IN PARIS. Game No. 1361. Played between Messrs. Journaud and Greville. (Swiss Gambit).

W. (Mr. Journaud). B. (Mr. Greville). 1. P to K4. 2. K to B3. 3. P to Q4. 4. K to K5. 5. Q to K5. 6. Q x P. 7. Q x Kt. 8. P to B3. 9. Castles. 10. K to Q B3. (Finely played. Black dare not capture either Kt.)

11. K to Kt. 12. Q to K5. 13. Q to Q3. 14. R to K5. (He ought rather to have exchanged Queens.) 15. Q to K2. 16. P to K4. 17. P to Kt3. (This loses instantly. Q to Q3 would have been better.)

Game No. 1362. Between Messrs. Laroche and Schulten. (Irregular Opening). W. (Mr. Laroche). B. (Mr. Schulten).

1. P to K4. 2. K to B3. 3. P to Q4. 4. K to B3. 5. P to Q3. 6. P to K4. 7. P to K4. 8. B to K3. 9. P to B5. 10. B to K2. (Preparatory to castling upon the Queen's side, which, however, we think ill-judged.)

CHESS IN GERMANY. Game No. 1363. Played between Messrs. Lange and Schierstedt. (Ruy Lopez Knight's Game).

W. (Mr. Lange). B. (Mr. Schierstedt). 1. P to K4. 2. P to B3. 3. B to K5. 4. Castles. 5. P to Q4. 6. P to K7. 7. K to R5. 8. Q x P. 9. B to K4. (The strongest move on the board.)

10. K to B3. 11. Q to B2. 12. K to K5. (For an unparalyzed Chess eye it would seem indifferent which Rook were played to this square.)

Game No. 1364. Between the same players. (Philidor's Defence). WH. (Mr. Atwood). BL. (Mr. Wilson).

13. B to B4. 14. B to K3. 15. K to P. (This decides the skirmish.) 16. K to B6. 17. K to R. 18. P to K7. 19. P to K7. (ch), and wins.

DELAWARE MUTUAL SAFETY INSURANCE COMPANY. INCORPORATED BY THE LEGISLATURE OF PENNSYLVANIA, 1853. OFFICE: 415 WALNUT STREET, PHILADELPHIA.

ASSETS OF THE COMPANY, November 1, 1885. \$100,000 United States 5 per cent. Loan, 71,000 00

THOMAS CHRYSLER, DIRECTOR. GEORGE REEVE, DIRECTOR. JOHN C. MILLER, DIRECTOR. JOHN C. MILLER, DIRECTOR.

INSURANCE COMPANY OF NORTH AMERICA. INCORPORATED IN NEW YORK. OFFICE: 415 WALNUT STREET, PHILADELPHIA.

THE COUNTY FIRE INSURANCE COMPANY. OFFICE: 110 SOUTH FOURTH STREET, PHILADELPHIA.

THE FIRE INSURANCE COMPANY OF PHILADELPHIA. INCORPORATED IN PHILADELPHIA. OFFICE: 415 WALNUT STREET, PHILADELPHIA.

THE COUNTY FIRE INSURANCE COMPANY. OFFICE: 110 SOUTH FOURTH STREET, PHILADELPHIA.

THE FIRE INSURANCE COMPANY OF PHILADELPHIA. INCORPORATED IN PHILADELPHIA. OFFICE: 415 WALNUT STREET, PHILADELPHIA.

THE COUNTY FIRE INSURANCE COMPANY. OFFICE: 110 SOUTH FOURTH STREET, PHILADELPHIA.

THE FIRE INSURANCE COMPANY OF PHILADELPHIA. INCORPORATED IN PHILADELPHIA. OFFICE: 415 WALNUT STREET, PHILADELPHIA.

THE COUNTY FIRE INSURANCE COMPANY. OFFICE: 110 SOUTH FOURTH STREET, PHILADELPHIA.

THE FIRE INSURANCE COMPANY OF PHILADELPHIA. INCORPORATED IN PHILADELPHIA. OFFICE: 415 WALNUT STREET, PHILADELPHIA.

INSURANCE. FIRE INSURANCE. LIVERPOOL and LONDON and GLOBE INSURANCE COMPANY.

Authorized Capital, \$10 Millions. Invested Funds, over 16 Millions. Yearly Revenue, over 5 Millions. Invested in the United States, over \$1,500,000.

ATWOOD SMITH, General Agent for Pennsylvania. OFFICE: No. 6 Merchants' Exchange. 67 1/2 North Second Street, PHILADELPHIA.

GIRARD FIRE AND MARINE INSURANCE COMPANY. OFFICE: 415 WALNUT STREET, PHILADELPHIA.

THE COUNTY FIRE INSURANCE COMPANY. OFFICE: 110 SOUTH FOURTH STREET, PHILADELPHIA.

THE FIRE INSURANCE COMPANY OF PHILADELPHIA. INCORPORATED IN PHILADELPHIA. OFFICE: 415 WALNUT STREET, PHILADELPHIA.

THE COUNTY FIRE INSURANCE COMPANY. OFFICE: 110 SOUTH FOURTH STREET, PHILADELPHIA.

THE FIRE INSURANCE COMPANY OF PHILADELPHIA. INCORPORATED IN PHILADELPHIA. OFFICE: 415 WALNUT STREET, PHILADELPHIA.

THE COUNTY FIRE INSURANCE COMPANY. OFFICE: 110 SOUTH FOURTH STREET, PHILADELPHIA.

THE FIRE INSURANCE COMPANY OF PHILADELPHIA. INCORPORATED IN PHILADELPHIA. OFFICE: 415 WALNUT STREET, PHILADELPHIA.

THE COUNTY FIRE INSURANCE COMPANY. OFFICE: 110 SOUTH FOURTH STREET, PHILADELPHIA.

THE FIRE INSURANCE COMPANY OF PHILADELPHIA. INCORPORATED IN PHILADELPHIA. OFFICE: 415 WALNUT STREET, PHILADELPHIA.

TRAVELING GUIDE. PHILADELPHIA AND BALTIMORE RAILROAD. PHILADELPHIA AND WASHINGTON RAILROAD.

PHILADELPHIA AND BALTIMORE RAILROAD. PHILADELPHIA AND WASHINGTON RAILROAD. PHILADELPHIA AND NEW YORK RAILROAD.

PHILADELPHIA AND BALTIMORE RAILROAD. PHILADELPHIA AND WASHINGTON RAILROAD. PHILADELPHIA AND NEW YORK RAILROAD.

PHILADELPHIA AND BALTIMORE RAILROAD. PHILADELPHIA AND WASHINGTON RAILROAD. PHILADELPHIA AND NEW YORK RAILROAD.

PHILADELPHIA AND BALTIMORE RAILROAD. PHILADELPHIA AND WASHINGTON RAILROAD. PHILADELPHIA AND NEW YORK RAILROAD.

PHILADELPHIA AND BALTIMORE RAILROAD. PHILADELPHIA AND WASHINGTON RAILROAD. PHILADELPHIA AND NEW YORK RAILROAD.

PHILADELPHIA AND BALTIMORE RAILROAD. PHILADELPHIA AND WASHINGTON RAILROAD. PHILADELPHIA AND NEW YORK RAILROAD.

PHILADELPHIA AND BALTIMORE RAILROAD. PHILADELPHIA AND WASHINGTON RAILROAD. PHILADELPHIA AND NEW YORK RAILROAD.

PHILADELPHIA AND BALTIMORE RAILROAD. PHILADELPHIA AND WASHINGTON RAILROAD. PHILADELPHIA AND NEW YORK RAILROAD.

PHILADELPHIA AND BALTIMORE RAILROAD. PHILADELPHIA AND WASHINGTON RAILROAD. PHILADELPHIA AND NEW YORK RAILROAD.

PHILADELPHIA AND BALTIMORE RAILROAD. PHILADELPHIA AND WASHINGTON RAILROAD. PHILADELPHIA AND NEW YORK RAILROAD.

PHILADELPHIA AND BALTIMORE RAILROAD. PHILADELPHIA AND WASHINGTON RAILROAD. PHILADELPHIA AND NEW YORK RAILROAD.

TRAVELING GUIDE. PHILADELPHIA AND BALTIMORE RAILROAD. PHILADELPHIA AND WASHINGTON RAILROAD.

PHILADELPHIA AND BALTIMORE RAILROAD. PHILADELPHIA AND WASHINGTON RAILROAD. PHILADELPHIA AND NEW YORK RAILROAD.

PHILADELPHIA AND BALTIMORE RAILROAD. PHILADELPHIA AND WASHINGTON RAILROAD. PHILADELPHIA AND NEW YORK RAILROAD.

PHILADELPHIA AND BALTIMORE RAILROAD. PHILADELPHIA AND WASHINGTON RAILROAD. PHILADELPHIA AND NEW YORK RAILROAD.

PHILADELPHIA AND BALTIMORE RAILROAD. PHILADELPHIA AND WASHINGTON RAILROAD. PHILADELPHIA AND NEW YORK RAILROAD.

PHILADELPHIA AND BALTIMORE RAILROAD. PHILADELPHIA AND WASHINGTON RAILROAD. PHILADELPHIA AND NEW YORK RAILROAD.

PHILADELPHIA AND BALTIMORE RAILROAD. PHILADELPHIA AND WASHINGTON RAILROAD. PHILADELPHIA AND NEW YORK RAILROAD.

PHILADELPHIA AND BALTIMORE RAILROAD. PHILADELPHIA AND WASHINGTON RAILROAD. PHILADELPHIA AND NEW YORK RAILROAD.

PHILADELPHIA AND BALTIMORE RAILROAD. PHILADELPHIA AND WASHINGTON RAILROAD. PHILADELPHIA AND NEW YORK RAILROAD.

PHILADELPHIA AND BALTIMORE RAILROAD. PHILADELPHIA AND WASHINGTON RAILROAD. PHILADELPHIA AND NEW YORK RAILROAD.

PHILADELPHIA AND BALTIMORE RAILROAD. PHILADELPHIA AND WASHINGTON RAILROAD. PHILADELPHIA AND NEW YORK RAILROAD.

PHILADELPHIA AND BALTIMORE RAILROAD. PHILADELPHIA AND WASHINGTON RAILROAD. PHILADELPHIA AND NEW YORK RAILROAD.