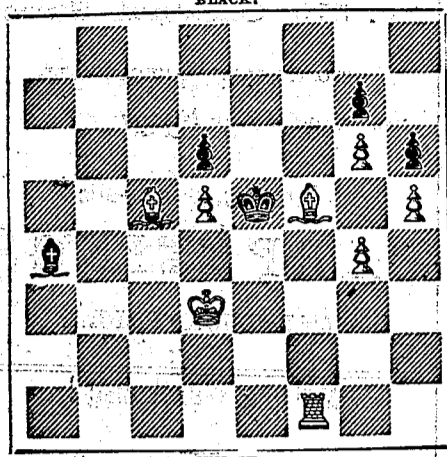


CHESS COLUMN

PHILADELPHIA EVENING BULLETIN, FRIDAY, May 4, 1886.

All communications for this column must be directed to "Chess Editor of Evening Bulletin," and should reach the office, at latest, on Thursday morning. All Problems must be accompanied by the solution and name of the composer.

Problem No. 435. BY MR. J. F. HOPE. BLACK.



White to play and mate in three moves.

CHESS IN PHILADELPHIA.

Game No. 1331.

Mr. J. D. Stockton gives the odds of a pawn

(Remove White's Queen's Knight).

(Evans' Gambit).

WH. (MR. STOCKTON.) BL. (MR. —)

- 1. P to K4 B to K4
2. Kt to B3 Q to B3
3. B to B4 K to B4
4. P to Q K4 B to B4
5. P to B3 B to B4
6. Castles P to Q3
7. P to Q4 K to B3
8. Q to Kt5 Q to B3

(Q Kt to R4 is better.)

- 9. B to Kt5 Q to Kt3
10. B to Kt5 B to Q2
11. B to Q5 R to B4
12. B to B3 K to B3
13. B to Kt5 (ch) K to B3
14. P to Kt5 (ch) P to B3
15. P to Kt5 (ch) P to B3
16. P to Kt5 (ch) P to B3
17. P to Kt5 (ch) P to B3
18. P to Kt5 (ch) P to B3
19. P to Kt5 (ch) P to B3
20. P to Kt5 (ch) P to B3
21. P to Kt5 (ch) P to B3
22. P to Kt5 (ch) P to B3

(Well played.)

- 19. Q x B
20. R to Q7 (ch) K to R sq
21. Kt to B P (ch) K to R sq
22. Q x R (ch) B x Q
23. P to K5 mate

(Had the Knight been taken, then B to Q3 and B x K5.)

CHESS IN NEW YORK.

Game No. 1332.

Between Messrs. J. C. Warner and P. Richardson.

(By Lopez Knight's Game.)

W. (MR. RICHARDSON.) B. (MR. WARNER.)

- 1. P to K4 B to K4
2. Kt to B3 Q to B3
3. B to Kt5 K to B3
4. Castles P to Q3
5. B to R4 B to K2
6. P to Q4 P x P
7. P to K5 R to K5
8. P to K5 R to K5
9. Q x P Q x Q
10. Kt x Q Castles
11. B to B3 P to B3
12. P to K5 B x P
13. P x P B x P

(Black's only disadvantage now is his doubled pawns.)

- 14. Kt to Q2 Kt to K3
15. Kt to K2 Kt to K3
16. Kt to K4 B to K2
17. P to Kt5 P to Kt5
18. Kt to K3 P to Kt3
19. P to Kt4 B to Kt4
20. P to Kt4 B to Kt4

(Wishing to preserve both of his Bishops.)

- 21. P to Kt4 B to Kt4
22. P to Kt4 B to Kt4
23. P to Kt4 B to Kt4
24. P to Kt4 B to Kt4
25. P to Kt4 B to Kt4
26. P to Kt4 B to Kt4
27. P to Kt4 B to Kt4
28. P to Kt4 B to Kt4
29. P to Kt4 B to Kt4
30. P to Kt4 B to Kt4

(A misculation, evidently.)

- 19. B x B P
20. Kt to R B sq B to B3
21. Kt to K6 B x R
22. Kt x R (ch) R x Kt
23. P to Kt5 R to Kt5
24. B to B2 B to B2
25. R to K sq B to Q4
26. R to K3 K to B5
27. P to B3 K to B3
28. B to Kt3 R to Q5
29. B x P R to Q7
30. B x P R x Q B7
31. P to Kt4 R to Q R4
32. R to K7 (ch) R to Kt3
33. B to Q4 R to K7 (ch)
34. K to B3 K to R3
35. K to B7 K to R3
36. R to K sq K to K6
37. R to K7 (ch) K to K6
38. P to Kt5 (ch) K to Kt3

(Obviously the best.)

- 39. R x Kt P R x R P
40. B to K B sq R to R4
41. R to K4 R to R4
42. R to K3 P x P
43. B to R3 K to B4
44. K to B2 K to B5
45. R to K sq R to R6
46. B to B5 R to B6 (ch)
47. K to K2 P to K6
48. R to B sq R to B5 (ch)
49. R x R B to R (ch)
50. R to Q3 K to B6
51. K to K sq K to B6
52. K to Q2 B to Kt4 & wins.

CHESS IN BATH, ENG.

Game No. 1333.

The following game was recently played at Bath by Capt. H. A. Kennedy against the Rev. W. Whyte.

(By Lopez Knight's Game.)

WH. (CAPT. KENNEDY.) BL. (MR. WHYTE.)

- 1. P to K4 P to K4
2. Kt to B3 P to Q B3
3. B to Kt5 P to Q R3
4. Castles P to Q R4
5. B to R4 B to K2
6. P to Q4 P x P
7. P to K5 R to K5
8. P to K5 R to K5
9. Q x P Q x Q
10. Kt x Q Castles
11. B to B3 P to B3
12. P to K5 B x P
13. P x P B x P

(The ending of this game is well worthy attention from the student. Both players were great masters in positions like the present, and we may be sure, when contending together, they played all they knew.)

- 32. K to Q3 B to Kt4
33. K to B3 B to K3
34. K to Q Kt4 B to K sq
35. K to B5 K to K3
36. Kt to B6 P to Q R3
37. Kt to R sq R to Kt3
38. Kt x P P to K5
39. Kt to K3 R to K4
40. Q to Q5 (ch) K to K4
41. P to Kt4 R to Q R4
42. K to Q6 P to Q Kt5
43. K to B5 P to Q R4
44. K to B6, and wins.—London News.

DRUGS.

BLAIN'S LIQUID KIDNEY.—For making in a few minutes a variety of delicious drinks. We will send you a bottle of this beverage, which is sold in every city and town in the country.

It is a most valuable and medicinal preparation, and is highly recommended by the medical profession.

It is a most valuable and medicinal preparation, and is highly recommended by the medical profession.

It is a most valuable and medicinal preparation, and is highly recommended by the medical profession.

It is a most valuable and medicinal preparation, and is highly recommended by the medical profession.

It is a most valuable and medicinal preparation, and is highly recommended by the medical profession.

It is a most valuable and medicinal preparation, and is highly recommended by the medical profession.

It is a most valuable and medicinal preparation, and is highly recommended by the medical profession.

It is a most valuable and medicinal preparation, and is highly recommended by the medical profession.

It is a most valuable and medicinal preparation, and is highly recommended by the medical profession.

It is a most valuable and medicinal preparation, and is highly recommended by the medical profession.

It is a most valuable and medicinal preparation, and is highly recommended by the medical profession.

It is a most valuable and medicinal preparation, and is highly recommended by the medical profession.

It is a most valuable and medicinal preparation, and is highly recommended by the medical profession.

It is a most valuable and medicinal preparation, and is highly recommended by the medical profession.

It is a most valuable and medicinal preparation, and is highly recommended by the medical profession.

It is a most valuable and medicinal preparation, and is highly recommended by the medical profession.

It is a most valuable and medicinal preparation, and is highly recommended by the medical profession.

It is a most valuable and medicinal preparation, and is highly recommended by the medical profession.

It is a most valuable and medicinal preparation, and is highly recommended by the medical profession.

It is a most valuable and medicinal preparation, and is highly recommended by the medical profession.

It is a most valuable and medicinal preparation, and is highly recommended by the medical profession.

It is a most valuable and medicinal preparation, and is highly recommended by the medical profession.

It is a most valuable and medicinal preparation, and is highly recommended by the medical profession.

It is a most valuable and medicinal preparation, and is highly recommended by the medical profession.

It is a most valuable and medicinal preparation, and is highly recommended by the medical profession.

It is a most valuable and medicinal preparation, and is highly recommended by the medical profession.

It is a most valuable and medicinal preparation, and is highly recommended by the medical profession.

It is a most valuable and medicinal preparation, and is highly recommended by the medical profession.

It is a most valuable and medicinal preparation, and is highly recommended by the medical profession.

It is a most valuable and medicinal preparation, and is highly recommended by the medical profession.

It is a most valuable and medicinal preparation, and is highly recommended by the medical profession.

It is a most valuable and medicinal preparation, and is highly recommended by the medical profession.

It is a most valuable and medicinal preparation, and is highly recommended by the medical profession.

It is a most valuable and medicinal preparation, and is highly recommended by the medical profession.

It is a most valuable and medicinal preparation, and is highly recommended by the medical profession.

It is a most valuable and medicinal preparation, and is highly recommended by the medical profession.

It is a most valuable and medicinal preparation, and is highly recommended by the medical profession.

It is a most valuable and medicinal preparation, and is highly recommended by the medical profession.

It is a most valuable and medicinal preparation, and is highly recommended by the medical profession.

It is a most valuable and medicinal preparation, and is highly recommended by the medical profession.

It is a most valuable and medicinal preparation, and is highly recommended by the medical profession.

MUNICIPAL CLAIMS.

CITY OF PHILADELPHIA'S OFFICE.

PROPERTY OWNERS WILL PLEASE TAKE NOTICE of the following claims, which will be advertised in the City of Philadelphia, on or after the date of this date, if not paid at this office.

APRIL 1886.

FROM DOCKET 1. C. P. December Term, 1885. No. 17. Claim for water pipe, 81 ft. 10 in. east side of Thompson street, 15 feet front, 15 feet depth, 15 feet depth, 15 feet depth.

Page 1. City of Philadelphia, C. P. December Term, 1885. No. 17. Claim for water pipe, 81 ft. 10 in. east side of Thompson street, 15 feet front, 15 feet depth, 15 feet depth, 15 feet depth.

Page 2. City of Philadelphia, C. P. December Term, 1885. No. 17. Claim for water pipe, 81 ft. 10 in. east side of Thompson street, 15 feet front, 15 feet depth, 15 feet depth, 15 feet depth.

Page 3. City of Philadelphia, C. P. December Term, 1885. No. 17. Claim for water pipe, 81 ft. 10 in. east side of Thompson street, 15 feet front, 15 feet depth, 15 feet depth, 15 feet depth.

Page 4. City of Philadelphia, C. P. December Term, 1885. No. 17. Claim for water pipe, 81 ft. 10 in. east side of Thompson street, 15 feet front, 15 feet depth, 15 feet depth, 15 feet depth.

Page 5. City of Philadelphia, C. P. December Term, 1885. No. 17. Claim for water pipe, 81 ft. 10 in. east side of Thompson street, 15 feet front, 15 feet depth, 15 feet depth, 15 feet depth.

Page 6. City of Philadelphia, C. P. December Term, 1885. No. 17. Claim for water pipe, 81 ft. 10 in. east side of Thompson street, 15 feet front, 15 feet depth, 15 feet depth, 15 feet depth.

Page 7. City of Philadelphia, C. P. December Term, 1885. No. 17. Claim for water pipe, 81 ft. 10 in. east side of Thompson street, 15 feet front, 15 feet depth, 15 feet depth, 15 feet depth.

Page 8. City of Philadelphia, C. P. December Term, 1885. No. 17. Claim for water pipe, 81 ft. 10 in. east side of Thompson street, 15 feet front, 15 feet depth, 15 feet depth, 15 feet depth.

Page 9. City of Philadelphia, C. P. December Term, 1885. No. 17. Claim for water pipe, 81 ft. 10 in. east side of Thompson street, 15 feet front, 15 feet depth, 15 feet depth, 15 feet depth.

Page 10. City of Philadelphia, C. P. December Term, 1885. No. 17. Claim for water pipe, 81 ft. 10 in. east side of Thompson street, 15 feet front, 15 feet depth, 15 feet depth, 15 feet depth.

Page 11. City of Philadelphia, C. P. December Term, 1885. No. 17. Claim for water pipe, 81 ft. 10 in. east side of Thompson street, 15 feet front, 15 feet depth, 15 feet depth, 15 feet depth.

Page 12. City of Philadelphia, C. P. December Term, 1885. No. 17. Claim for water pipe, 81 ft. 10 in. east side of Thompson street, 15 feet front, 15 feet depth, 15 feet depth, 15 feet depth.

Page 13. City of Philadelphia, C. P. December Term, 1885. No. 17. Claim for water pipe, 81 ft. 10 in. east side of Thompson street, 15 feet front, 15 feet depth, 15 feet depth, 15 feet depth.

Page 14. City of Philadelphia, C. P. December Term, 1885. No. 17. Claim for water pipe, 81 ft. 10 in. east side of Thompson street, 15 feet front, 15 feet depth, 15 feet depth, 15 feet depth.

Page 15. City of Philadelphia, C. P. December Term, 1885. No. 17. Claim for water pipe, 81 ft. 10 in. east side of Thompson street, 15 feet front, 15 feet depth, 15 feet depth, 15 feet depth.

Page 16. City of Philadelphia, C. P. December Term, 1885. No. 17. Claim for water pipe, 81 ft. 10 in. east side of Thompson street, 15 feet front, 15 feet depth, 15 feet depth, 15 feet depth.

Page 17. City of Philadelphia, C. P. December Term, 1885. No. 17. Claim for water pipe, 81 ft. 10 in. east side of Thompson street, 15 feet front, 15 feet depth, 15 feet depth, 15 feet depth.

Page 18. City of Philadelphia, C. P. December Term, 1885. No. 17. Claim for water pipe, 81 ft. 10 in. east side of Thompson street, 15 feet front, 15 feet depth, 15 feet depth, 15 feet depth.

Page 19. City of Philadelphia, C. P. December Term, 1885. No. 17. Claim for water pipe, 81 ft. 10 in. east side of Thompson street, 15 feet front, 15 feet depth, 15 feet depth, 15 feet depth.

Page 20. City of Philadelphia, C. P. December Term, 1885. No. 17. Claim for water pipe, 81 ft. 10 in. east side of Thompson street, 15 feet front, 15 feet depth, 15 feet depth, 15 feet depth.

Page 21. City of Philadelphia, C. P. December Term, 1885. No. 17. Claim for water pipe, 81 ft. 10 in. east side of Thompson street, 15 feet front, 15 feet depth, 15 feet depth, 15 feet depth.

Page 22. City of Philadelphia, C. P. December Term, 1885. No. 17. Claim for water pipe, 81 ft. 10 in. east side of Thompson street, 15 feet front, 15 feet depth, 15 feet depth, 15 feet depth.

Page 23. City of Philadelphia, C. P. December Term, 1885. No. 17. Claim for water pipe, 81 ft. 10 in. east side of Thompson street, 15 feet front, 15 feet depth, 15 feet depth, 15 feet depth.

Page 24. City of Philadelphia, C. P. December Term, 1885. No. 17. Claim for water pipe, 81 ft. 10 in. east side of Thompson street, 15 feet front, 15 feet depth, 15 feet depth, 15 feet depth.

Page 25. City of Philadelphia, C. P. December Term, 1885. No. 17. Claim for water pipe, 81 ft. 10 in. east side of Thompson street, 15 feet front, 15 feet depth, 15 feet depth, 15 feet depth.

Page 26. City of Philadelphia, C. P. December Term, 1885. No. 17. Claim for water pipe, 81 ft. 10 in. east side of Thompson street, 15 feet front, 15 feet depth, 15 feet depth, 15 feet depth.

Page 27. City of Philadelphia, C. P. December Term, 1885. No. 17. Claim for water pipe, 81 ft. 10 in. east side of Thompson street, 15 feet front, 15 feet depth, 15 feet depth, 15 feet depth.

Page 28. City of Philadelphia, C. P. December Term, 1885. No. 17. Claim for water pipe, 81 ft. 10 in. east side of Thompson street, 15 feet front, 15 feet depth, 15 feet depth, 15 feet depth.

Page 29. City of Philadelphia, C. P. December Term, 1885. No. 17. Claim for water pipe, 81 ft. 10 in. east side of Thompson street, 15 feet front, 15 feet depth, 15 feet depth, 15 feet depth.

Page 30. City of Philadelphia, C. P. December Term, 1885. No. 17. Claim for water pipe, 81 ft. 10 in. east side of Thompson street, 15 feet front, 15 feet depth, 15 feet depth, 15 feet depth.

Page 31. City of Philadelphia, C. P. December Term, 1885. No. 17. Claim for water pipe, 81 ft. 10 in. east side of Thompson street, 15 feet front, 15 feet depth, 15 feet depth, 15 feet depth.

Page 32. City of Philadelphia, C. P. December Term, 1885. No. 17. Claim for water pipe, 81 ft. 10 in. east side of Thompson street, 15 feet front, 15 feet depth, 15 feet depth, 15 feet depth.

Page 33. City of Philadelphia, C. P. December Term, 1885. No. 17. Claim for water pipe, 81 ft. 10 in. east side of Thompson street, 15 feet front, 15 feet depth, 15 feet depth, 15 feet depth.

Page 34. City of Philadelphia, C. P. December Term, 1885. No. 17. Claim for water pipe, 81 ft. 10 in. east side of Thompson street, 15 feet front, 15 feet depth, 15 feet depth, 15 feet depth.

Page 35. City of Philadelphia, C. P. December Term, 1885. No. 17. Claim for water pipe, 81 ft. 10 in. east side of Thompson street, 15 feet front, 15 feet depth, 15 feet depth, 15 feet depth.

Page 36. City of Philadelphia, C. P. December Term, 1885. No. 17. Claim for water pipe, 81 ft. 10 in. east side of Thompson street, 15 feet front, 15 feet depth, 15 feet depth, 15 feet depth.

Page 37. City of Philadelphia, C. P. December Term, 1885. No. 17. Claim for water pipe, 81 ft. 10 in. east side of Thompson street, 15 feet front, 15 feet depth, 15 feet depth, 15 feet depth.

Page 38. City of Philadelphia, C. P. December Term, 1885. No. 17. Claim for water pipe, 81 ft. 10 in. east side of Thompson street, 15 feet front, 15 feet depth, 15 feet depth, 15 feet depth.

Page 39. City of Philadelphia, C. P. December Term, 1885. No. 17. Claim for water pipe, 81 ft. 10 in. east side of Thompson street, 15 feet front, 15 feet depth, 15 feet depth, 15 feet depth.

Page 40. City of Philadelphia, C. P. December Term, 1885. No. 17. Claim for water pipe, 81 ft. 10 in. east side of Thompson street, 15 feet front, 15 feet depth, 15 feet depth, 15 feet depth.

Page 41. City of Philadelphia, C. P. December Term, 1885. No. 17. Claim for water pipe, 81 ft. 10 in. east side of Thompson street, 15 feet front, 15 feet depth, 15 feet depth, 15 feet depth.

Page 42. City of Philadelphia, C. P. December Term, 1885. No. 17. Claim for water pipe, 81 ft. 10 in. east side of Thompson street, 15 feet front, 15 feet depth, 15 feet depth, 15 feet depth.

Page 43. City of Philadelphia, C. P. December Term, 1885. No. 17. Claim for water pipe, 81 ft. 10 in. east side of Thompson street, 15 feet front, 15 feet depth, 15 feet depth, 15 feet depth.

Page 44. City of Philadelphia, C. P. December Term, 1885. No. 17. Claim for water pipe, 81 ft. 10 in. east side of Thompson street, 15 feet front, 15 feet depth, 15 feet depth, 15 feet depth.

Page 45. City of Philadelphia, C. P. December Term, 1885. No. 17. Claim for water pipe, 81 ft. 10 in. east side of Thompson street, 15 feet front, 15 feet depth, 15 feet depth, 15 feet depth.

Page 46. City of Philadelphia, C. P. December Term, 1885. No. 17. Claim for water pipe, 81 ft. 10 in. east side of Thompson street, 15 feet front, 15 feet depth, 15 feet depth, 15 feet depth.

Page 47. City of Philadelphia, C. P. December Term, 1885. No. 17. Claim for water pipe, 81 ft. 10 in. east side of Thompson street, 15 feet front, 15 feet depth, 15 feet depth, 15 feet depth.

Page 48. City of Philadelphia, C. P. December Term, 1885. No. 17. Claim for water pipe, 81 ft. 10 in. east side of Thompson street, 15 feet front, 15 feet depth, 15 feet depth, 15 feet depth.

Page 49. City of Philadelphia, C. P. December Term, 1885. No. 17. Claim for water pipe, 81 ft. 10 in. east side of Thompson street, 15 feet front, 15 feet depth, 15 feet depth, 15 feet depth.

Page 50. City of Philadelphia, C. P. December Term, 1885. No. 17. Claim for water pipe, 81 ft. 10 in. east side of Thompson street, 15 feet front, 15 feet depth, 15 feet depth, 15 feet depth.

Page 51. City of Philadelphia, C. P. December Term, 1885. No. 17. Claim for water pipe, 81 ft. 10 in. east side of Thompson street, 15 feet front, 15 feet depth, 15 feet depth, 15 feet depth.

Page 52. City of Philadelphia, C. P. December Term, 1885. No. 17. Claim for water pipe, 81 ft. 10 in. east side of Thompson street, 15 feet front, 15 feet depth, 15 feet depth, 15 feet depth.

Page 53. City of Philadelphia, C. P. December Term, 1885. No. 17. Claim for water pipe, 81 ft. 10 in. east side of Thompson street, 15 feet front, 15 feet depth, 15 feet depth, 15 feet depth.

Page 54. City of Philadelphia, C. P. December Term, 1885. No. 17. Claim for water pipe, 81 ft. 10 in. east side of Thompson street, 15 feet front, 15 feet depth, 15 feet depth, 15 feet depth.

Page 55. City of Philadelphia, C. P. December Term, 1885. No. 17. Claim for water pipe, 81 ft. 10 in. east side of Thompson street, 15 feet front, 15 feet depth, 15 feet depth, 15 feet depth.

Page 56. City of Philadelphia, C. P. December Term, 1885. No. 17. Claim for water pipe, 81 ft. 10 in. east side of Thompson street, 15 feet front, 15 feet depth, 15 feet depth, 15 feet depth.

Page 57. City of Philadelphia, C. P. December Term, 1885. No. 17. Claim for water pipe, 81 ft. 10 in. east side of Thompson street, 15 feet front, 15 feet depth, 15 feet depth, 15 feet depth.

Page 58. City of Philadelphia, C. P. December Term, 1885. No. 17. Claim for water pipe, 81 ft. 10 in. east side of Thompson street, 15 feet front, 15 feet depth, 15 feet depth, 15 feet depth.

Page 59. City of Philadelphia, C. P. December Term, 1885. No. 17. Claim for water pipe, 81 ft. 10 in. east side of Thompson street, 15 feet front, 15 feet depth, 15 feet depth, 15 feet depth.

Page 60. City of Philadelphia, C. P. December Term, 1885. No. 17. Claim for water pipe, 81 ft. 10 in. east side of Thompson street, 15 feet front, 15 feet depth, 15 feet depth, 15 feet depth.

Page 61. City of Philadelphia, C. P. December Term, 1885. No. 17. Claim for water pipe, 81 ft. 10 in. east side of Thompson street, 15 feet front, 15 feet depth, 15 feet depth, 15 feet depth.

Page 62. City