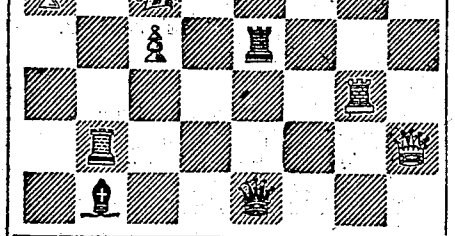


CHESS COLUMN
PHILADELPHIA EVENING BULLETIN,
FRIDAY, April 20, 1866.

All communications for this column must be directed "Chess Editor of Evening Bulletin," and should reach the office, at latest, on Thursday morning. All Problems must be accompanied by the solution and name of the composer.

A match at Chess is now in progress at the New York Chess Club, between Dr. Ward, of the above city, and Captain Mackenzie, the latter giving the odds of the Queen's Rook. Five games have been played at last accounts, of which Dr. Ward won three, and Captain Mackenzie two.

Mr. Young having withdrawn from the New York Edition, has resigned his position as Chess editor of that paper, and has been succeeded by Captain Mackenzie.



White to play and mate in three moves.
CHESS IN PHILADELPHIA.
Game No. 1817.

Wh. (Mr. B.) Bl. (Mr. Darling.)
1. P to K4 P to K4
2. P to B4 P to Kt4
3. K to Kt3 P to Kt4
4. B to B4 P to Kt2
5. K to Kt P to Q3
6. K to Kt P to Q3
7. Castles G. Q x K
8. P to B4 B to R6
9. P to B4 B to R6
10. R to B2 Kt to K3
11. P to K5 Kt to Q2
12. P to B3 B to Kt4
13. Q to Kt3 K to Kt2
14. Q to Kt3 K to Kt2
15. P to Q3 B to Q6
16. P to Q3 B to Kt4
17. Q x Kt P to Kt4
18. R to B4, and Black mates in six moves.

CHESS IN MEMPHIS, TENN.
Game No. 1818.
Between Messrs. Campbell and Falkbeer, at the Philidor Rooms.
(Dry Lopez Knight's Game).

Wh. (Mr. Campbell.) Bl. (Mr. Falkbeer.)
1. P to K4 P to K4
2. P to B4 B to B4
3. P to Q4 B to Kt4
4. P to B3 B to Kt3
5. P to Q3 B to Kt3
6. Castles K x K
7. P to Q4 K to Kt4
8. P to Q4 K to Kt4
9. P to Q5 K to Kt2
10. P to K6 K to Kt3
11. P to K6 K to Kt3
12. K to Kt5 K to Kt2
13. K to Kt5 Castles
14. Q to B2, and wins.

CHESS IN LONDON.
Game No. 1820.
Between Messrs. Anderson and de Haar.
(Irregular Opening).

Wh. (Mr. Anderson.) Bl. (Mr. de Haar.)
1. P to K4 P to K4
2. P to B3 P to Kt4
3. P to Q4 B to Kt4
4. P to B3 B to Kt3
5. P to Q3 B to Kt3
6. Castles K x K
7. P to Q4 K to Kt4
8. P to Q4 K to Kt4
9. P to Q5 K to Kt2
10. P to K6 K to Kt3
11. P to K6 K to Kt3
12. K to Kt5 K to Kt2
13. K to Kt5 Castles
14. Q to B2, and wins.

CHESS IN HOLLAND.
Game No. 1821.
Between Messrs. Anderson and de Haar.
(Irregular Opening).

Wh. (Mr. Anderson.) Bl. (Mr. de Haar.)
1. P to K4 P to K4
2. P to B3 P to Kt4
3. P to Q4 B to Kt4
4. P to B3 B to Kt3
5. P to Q3 B to Kt3
6. Castles K x K
7. P to Q4 K to Kt4
8. P to Q4 K to Kt4
9. P to Q5 K to Kt2
10. P to K6 K to Kt3
11. P to K6 K to Kt3
12. K to Kt5 K to Kt2
13. K to Kt5 Castles
14. Q to B2, and wins.

SHIPPING
FOR NEW YORK.
Via Delaware and Barren Canal.
The Philadelphia and New York Express Steamboat Company.
Steam Propellers leave DAILY from Philadelphia at 10 A.M. for New York, and return at 10 P.M. for Philadelphia.

CHESS IN GERMANY.
Game No. 1822.
Between Messrs. Hirschfeld and Wilberg.
(Knight's Gambit Defied).

Wh. (Mr. Hirschfeld.) Bl. (Mr. Hirschfeld.)
1. P to K4 P to K4
2. P to B4 B to B4
3. Q to B3 P to Kt4
4. P to K4 P to K4
5. P to K4 P to K4
6. P to K4 P to K4
7. P to K4 P to K4
8. P to K4 P to K4
9. P to K4 P to K4
10. P to K4 P to K4
11. P to K4 P to K4
12. P to K4 P to K4
13. P to K4 P to K4
14. P to K4 P to K4
15. P to K4 P to K4
16. P to K4 P to K4
17. P to K4 P to K4
18. P to K4 P to K4
19. P to K4 P to K4
20. P to K4 P to K4

Game No. 1823.
Lively game between Messrs. Suhle and Hillbrand.
(Evans' Gambit).

Wh. (Mr. Suhle.) Bl. (Mr. Hillbrand.)
1. P to K4 P to K4
2. P to Kt4 P to Kt4
3. P to Kt4 P to Kt4
4. P to Kt4 P to Kt4
5. P to Kt4 P to Kt4
6. P to Kt4 P to Kt4
7. P to Kt4 P to Kt4
8. P to Kt4 P to Kt4
9. P to Kt4 P to Kt4
10. P to Kt4 P to Kt4
11. P to Kt4 P to Kt4
12. P to Kt4 P to Kt4
13. P to Kt4 P to Kt4
14. P to Kt4 P to Kt4
15. P to Kt4 P to Kt4
16. P to Kt4 P to Kt4
17. P to Kt4 P to Kt4
18. P to Kt4 P to Kt4
19. P to Kt4 P to Kt4
20. P to Kt4 P to Kt4

Game No. 1824.
Between the same players.
(Evans' Gambit).

Wh. (Mr. Suhle.) Bl. (Mr. Hillbrand.)
1. P to K4 P to K4
2. P to Kt4 P to Kt4
3. P to Kt4 P to Kt4
4. P to Kt4 P to Kt4
5. P to Kt4 P to Kt4
6. P to Kt4 P to Kt4
7. P to Kt4 P to Kt4
8. P to Kt4 P to Kt4
9. P to Kt4 P to Kt4
10. P to Kt4 P to Kt4
11. P to Kt4 P to Kt4
12. P to Kt4 P to Kt4
13. P to Kt4 P to Kt4
14. P to Kt4 P to Kt4
15. P to Kt4 P to Kt4
16. P to Kt4 P to Kt4
17. P to Kt4 P to Kt4
18. P to Kt4 P to Kt4
19. P to Kt4 P to Kt4
20. P to Kt4 P to Kt4

NEW PUBLICATIONS.
HERBERT SPENCER'S PRINCIPLES OF SOCIOLOGY.
THE SCIENCE OF SOCIETY.
THE PRINCIPLES OF ETHICS.

COAL.
Eagle Vein Coal.
S. W. JENKINS COAL YARD.
THE UNDERGROUND INVENTION.

COMPTROLLER'S NOTICE.
THE TREASURY DEPARTMENT OFFICE OF COMPTROLLER OF THE CURRENCY.

SHIPPING
FOR NEW YORK.
Via Delaware and Barren Canal.
The Philadelphia and New York Express Steamboat Company.

SHIPPING
FOR NEW YORK.
Via Delaware and Barren Canal.
The Philadelphia and New York Express Steamboat Company.

SHIPPING
FOR NEW YORK.
Via Delaware and Barren Canal.
The Philadelphia and New York Express Steamboat Company.

SHIPPING
FOR NEW YORK.
Via Delaware and Barren Canal.
The Philadelphia and New York Express Steamboat Company.

SHIPPING
FOR NEW YORK.
Via Delaware and Barren Canal.
The Philadelphia and New York Express Steamboat Company.

SHIPPING
FOR NEW YORK.
Via Delaware and Barren Canal.
The Philadelphia and New York Express Steamboat Company.

SHIPPING
FOR NEW YORK.
Via Delaware and Barren Canal.
The Philadelphia and New York Express Steamboat Company.

SHIPPING
FOR NEW YORK.
Via Delaware and Barren Canal.
The Philadelphia and New York Express Steamboat Company.

SHIPPING
FOR NEW YORK.
Via Delaware and Barren Canal.
The Philadelphia and New York Express Steamboat Company.

SHIPPING
FOR NEW YORK.
Via Delaware and Barren Canal.
The Philadelphia and New York Express Steamboat Company.

SHIPPING
FOR NEW YORK.
Via Delaware and Barren Canal.
The Philadelphia and New York Express Steamboat Company.

SHIPPING
FOR NEW YORK.
Via Delaware and Barren Canal.
The Philadelphia and New York Express Steamboat Company.

TRAVELING GUIDE.
NORTH PENNSYLVANIA R.R.
PHILADELPHIA AND WYOMING VALLEY R.R.

TRAVELING GUIDE.
NORTH PENNSYLVANIA R.R.
PHILADELPHIA AND WYOMING VALLEY R.R.

TRAVELING GUIDE.
NORTH PENNSYLVANIA R.R.
PHILADELPHIA AND WYOMING VALLEY R.R.

TRAVELING GUIDE.
NORTH PENNSYLVANIA R.R.
PHILADELPHIA AND WYOMING VALLEY R.R.

TRAVELING GUIDE.
NORTH PENNSYLVANIA R.R.
PHILADELPHIA AND WYOMING VALLEY R.R.

TRAVELING GUIDE.
NORTH PENNSYLVANIA R.R.
PHILADELPHIA AND WYOMING VALLEY R.R.

TRAVELING GUIDE.
NORTH PENNSYLVANIA R.R.
PHILADELPHIA AND WYOMING VALLEY R.R.

TRAVELING GUIDE.
NORTH PENNSYLVANIA R.R.
PHILADELPHIA AND WYOMING VALLEY R.R.

TRAVELING GUIDE.
NORTH PENNSYLVANIA R.R.
PHILADELPHIA AND WYOMING VALLEY R.R.

TRAVELING GUIDE.
NORTH PENNSYLVANIA R.R.
PHILADELPHIA AND WYOMING VALLEY R.R.

TRAVELING GUIDE.
NORTH PENNSYLVANIA R.R.
PHILADELPHIA AND WYOMING VALLEY R.R.

TRAVELING GUIDE.
NORTH PENNSYLVANIA R.R.
PHILADELPHIA AND WYOMING VALLEY R.R.

TRAVELING GUIDE.
NORTH PENNSYLVANIA R.R.
PHILADELPHIA AND WYOMING VALLEY R.R.

TRAVELING GUIDE.
NORTH PENNSYLVANIA R.R.
PHILADELPHIA AND WYOMING VALLEY R.R.

TRAVELING GUIDE.
NORTH PENNSYLVANIA R.R.
PHILADELPHIA AND WYOMING VALLEY R.R.

TRAVELING GUIDE.
NORTH PENNSYLVANIA R.R.
PHILADELPHIA AND WYOMING VALLEY R.R.

TRAVELING GUIDE.
NORTH PENNSYLVANIA R.R.
PHILADELPHIA AND WYOMING VALLEY R.R.

TRAVELING GUIDE.
NORTH PENNSYLVANIA R.R.
PHILADELPHIA AND WYOMING VALLEY R.R.

TRAVELING GUIDE.
NORTH PENNSYLVANIA R.R.
PHILADELPHIA AND WYOMING VALLEY R.R.

TRAVELING GUIDE.
NORTH PENNSYLVANIA R.R.
PHILADELPHIA AND WYOMING VALLEY R.R.

TRAVELING GUIDE.
NORTH PENNSYLVANIA R.R.
PHILADELPHIA AND WYOMING VALLEY R.R.

TRAVELING GUIDE.
NORTH PENNSYLVANIA R.R.
PHILADELPHIA AND WYOMING VALLEY R.R.

TRAVELING GUIDE.
NORTH PENNSYLVANIA R.R.
PHILADELPHIA AND WYOMING VALLEY R.R.

TRAVELING GUIDE.
NORTH PENNSYLVANIA R.R.
PHILADELPHIA AND WYOMING VALLEY R.R.

TRAVELING GUIDE.
NORTH PENNSYLVANIA R.R.
PHILADELPHIA AND WYOMING VALLEY R.R.

TRAVELING GUIDE.
NORTH PENNSYLVANIA R.R.
PHILADELPHIA AND WYOMING VALLEY R.R.

TRAVELING GUIDE.
NORTH PENNSYLVANIA R.R.
PHILADELPHIA AND WYOMING VALLEY R.R.

TRAVELING GUIDE.
NORTH PENNSYLVANIA R.R.
PHILADELPHIA AND WYOMING VALLEY R.R.

TRAVELING GUIDE.
NORTH PENNSYLVANIA R.R.
PHILADELPHIA AND WYOMING VALLEY R.R.

TRAVELING GUIDE.
NORTH PENNSYLVANIA R.R.
PHILADELPHIA AND WYOMING VALLEY R.R.

TRAVELING GUIDE.
NORTH PENNSYLVANIA R.R.
PHILADELPHIA AND WYOMING VALLEY R.R.

TRAVELING GUIDE.
NORTH PENNSYLVANIA R.R.
PHILADELPHIA AND WYOMING VALLEY R.R.

TRAVELING GUIDE.
NORTH PENNSYLVANIA R.R.
PHILADELPHIA AND WYOMING VALLEY R.R.

TRAVELING GUIDE.
NORTH PENNSYLVANIA R.R.
PHILADELPHIA AND WYOMING VALLEY R.R.

TRAVELING GUIDE.
NORTH PENNSYLVANIA R.R.
PHILADELPHIA AND WYOMING VALLEY R.R.

TRAVELING GUIDE.
NORTH PENNSYLVANIA R.R.
PHILADELPHIA AND WYOMING VALLEY R.R.