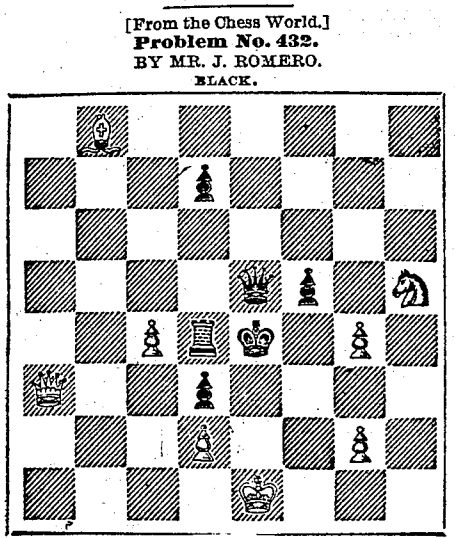


CHESS COLUMN

PHILADELPHIA EVENING BULLETIN. FRIDAY, April 13, 1866. All communications for this column must be directed "Chess Editor of Evening Bulletin," and should reach the office, at latest, on Thursday morning.



White to play and make three moves. CHESS IN PHILADELPHIA. Game No. 1311.

The following game, which has appeared before in print, was played in 1864. The contestants are Mr. Emerson Bennett and Mr. Jellett. (Evans' Gambit.)

White to play and make three moves. CHESS IN PHILADELPHIA. Game No. 1312.

Played in Birmingham some years ago, the advantage of the pawn and two moves being rendered by Mr. Staunton to the Rev. Mr. Gordon. (Remove Black's King's Bishop's Pawn.)

Played in Philadelphia some years ago, the advantage of the pawn and two moves being rendered by Mr. Staunton to the Rev. Mr. Gordon. (Remove Black's King's Bishop's Pawn.)

Played in Philadelphia some years ago, the advantage of the pawn and two moves being rendered by Mr. Staunton to the Rev. Mr. Gordon. (Remove Black's King's Bishop's Pawn.)

Chess in Germany. Game No. 1313. Between Messrs. v. d. Lasa and Dufresne. (Two Knights' Defence.)

Played in Vienna, between Mr. Falkbeer and Mr. Mathego. (Kieseritzky Gambit.)

Played in Philadelphia some years ago, the advantage of the pawn and two moves being rendered by Mr. Staunton to the Rev. Mr. Gordon. (Remove Black's King's Bishop's Pawn.)

Played in Philadelphia some years ago, the advantage of the pawn and two moves being rendered by Mr. Staunton to the Rev. Mr. Gordon. (Remove Black's King's Bishop's Pawn.)

Played in Philadelphia some years ago, the advantage of the pawn and two moves being rendered by Mr. Staunton to the Rev. Mr. Gordon. (Remove Black's King's Bishop's Pawn.)

Played in Philadelphia some years ago, the advantage of the pawn and two moves being rendered by Mr. Staunton to the Rev. Mr. Gordon. (Remove Black's King's Bishop's Pawn.)

SHIPPING. Via Delaware and Raritan Canal. The Philadelphia City Express Steamboat Company. Steam Propellers leave DAILY from the First Wharf above Market street.

SHIPPING. Via Delaware and Raritan Canal. The Philadelphia City Express Steamboat Company. Steam Propellers leave DAILY from the First Wharf above Market street.

SHIPPING. Via Delaware and Raritan Canal. The Philadelphia City Express Steamboat Company. Steam Propellers leave DAILY from the First Wharf above Market street.

SHIPPING. Via Delaware and Raritan Canal. The Philadelphia City Express Steamboat Company. Steam Propellers leave DAILY from the First Wharf above Market street.

TRAVELING GUIDE. NORTH PENNSYLVANIA RAILROAD. THE MIDDLE ROUTE. THE PENNSYLVANIA RAILROAD. THE PHILADELPHIA AND PITTSBURGH RAILROAD.

TRAVELING GUIDE. NORTH PENNSYLVANIA RAILROAD. THE MIDDLE ROUTE. THE PENNSYLVANIA RAILROAD. THE PHILADELPHIA AND PITTSBURGH RAILROAD.

TRAVELING GUIDE. NORTH PENNSYLVANIA RAILROAD. THE MIDDLE ROUTE. THE PENNSYLVANIA RAILROAD. THE PHILADELPHIA AND PITTSBURGH RAILROAD.

TRAVELING GUIDE. NORTH PENNSYLVANIA RAILROAD. THE MIDDLE ROUTE. THE PENNSYLVANIA RAILROAD. THE PHILADELPHIA AND PITTSBURGH RAILROAD.

TRAVELING GUIDE. NORTH PENNSYLVANIA RAILROAD. THE MIDDLE ROUTE. THE PENNSYLVANIA RAILROAD. THE PHILADELPHIA AND PITTSBURGH RAILROAD.

TRAVELING GUIDE. NORTH PENNSYLVANIA RAILROAD. THE MIDDLE ROUTE. THE PENNSYLVANIA RAILROAD. THE PHILADELPHIA AND PITTSBURGH RAILROAD.

TRAVELING GUIDE. NORTH PENNSYLVANIA RAILROAD. THE MIDDLE ROUTE. THE PENNSYLVANIA RAILROAD. THE PHILADELPHIA AND PITTSBURGH RAILROAD.

TRAVELING GUIDE. NORTH PENNSYLVANIA RAILROAD. THE MIDDLE ROUTE. THE PENNSYLVANIA RAILROAD. THE PHILADELPHIA AND PITTSBURGH RAILROAD.

TRAVELING GUIDE. NORTH PENNSYLVANIA RAILROAD. THE MIDDLE ROUTE. THE PENNSYLVANIA RAILROAD. THE PHILADELPHIA AND PITTSBURGH RAILROAD.

TRAVELING GUIDE. NORTH PENNSYLVANIA RAILROAD. THE MIDDLE ROUTE. THE PENNSYLVANIA RAILROAD. THE PHILADELPHIA AND PITTSBURGH RAILROAD.

TRAVELING GUIDE. NORTH PENNSYLVANIA RAILROAD. THE MIDDLE ROUTE. THE PENNSYLVANIA RAILROAD. THE PHILADELPHIA AND PITTSBURGH RAILROAD.

TRAVELING GUIDE. NORTH PENNSYLVANIA RAILROAD. THE MIDDLE ROUTE. THE PENNSYLVANIA RAILROAD. THE PHILADELPHIA AND PITTSBURGH RAILROAD.

PROPOSALS. DEPARTMENT OF PUBLIC HIGHWAYS. Sealed proposals will be received at the office of the Chief Engineer of Public Highways...

FOR SALE. BOTTLE MOLDERS. -SOUTH MOLDS FOR FLINT and Green Glass. ESTABLISHED IN 1840.

FOR SALE. BOTTLE MOLDERS. -SOUTH MOLDS FOR FLINT and Green Glass. ESTABLISHED IN 1840.

FOR SALE. BOTTLE MOLDERS. -SOUTH MOLDS FOR FLINT and Green Glass. ESTABLISHED IN 1840.

FOR SALE. BOTTLE MOLDERS. -SOUTH MOLDS FOR FLINT and Green Glass. ESTABLISHED IN 1840.

FOR SALE. BOTTLE MOLDERS. -SOUTH MOLDS FOR FLINT and Green Glass. ESTABLISHED IN 1840.

FOR SALE. BOTTLE MOLDERS. -SOUTH MOLDS FOR FLINT and Green Glass. ESTABLISHED IN 1840.

FOR SALE. BOTTLE MOLDERS. -SOUTH MOLDS FOR FLINT and Green Glass. ESTABLISHED IN 1840.

FOR SALE. BOTTLE MOLDERS. -SOUTH MOLDS FOR FLINT and Green Glass. ESTABLISHED IN 1840.