

CHESSE COLUMN PHILADELPHIA EVENING BULLETIN, FRIDAY, March 2, 1886.

All communications for this column must be directed to the Editor of the Evening Bulletin, and should reach the office at latest on Thursday morning.

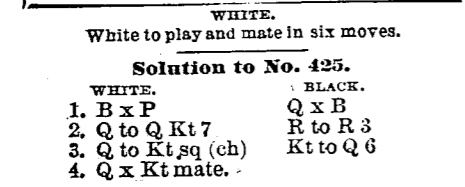
Answers to Correspondents. "B. R." - Correct, as usual.

REICHELM-JELLETT MATCH. - This match has made no progress during the past week, on account of Mr. Reichelm's inability to play.

NEW YORK TOURNAMENT. - Mr. Mackenzie has beaten Mr. Thompson three consecutive games, and thus becomes the winner of the first class.

The games in the match between the New York and Kingston Chess Clubs have proceeded for enough to determine the character of each opening, four moves having been played on each side.

Problem No. 426. BY MR. ALFRED KEMPE, BLACK.



White to play and mate in six moves. Solution to No. 425. WHITE TO PLAY.

CHESSE IN PHILADELPHIA. Game No. 1257. Between Messrs. Warner and Holstein. (Evans Gambit). (King's Gambit).

(A strong and perplexing method of attack.)

White to play and mate in six moves.

CHESSE IN ALABAMA. Game No. 1258. Played between Mr. P. Morphy and Mr. O. Maurian.

(The result of which is worth a note.)

IK to Kt sq, Black checks at Q 8, and the conclusion is the same.

IK to R 3 (best), Q to K 8 (ch)

31. Q to K 7 R to K 7 sq

32. Q to K 8 (ch) R to K 7 sq

33. K to R 3 (ch) Q to K 8 (ch)

34. K to R 3 (best) Q to K 8 (ch)

35. Q to K 8 (ch) R to K 7 sq

38. Q to R 3 (ch) K to Q 4

39. K to R 3 B to Q 3

40. R to R 3 R to Q 7 (ch)

41. K to K 2 R to Q 3

42. K to R 3 B to Q 3

43. R to R 3 R to Q 7 (ch)

44. K to K 2 R to Q 3

45. R to R 3 R to Q 7 (ch)

46. K to K 2 R to Q 3

47. R to R 3 R to Q 7 (ch)

48. K to K 2 R to Q 3

49. R to R 3 R to Q 7 (ch)

50. K to K 2 R to Q 3

51. R to R 3 R to Q 7 (ch)

52. K to K 2 R to Q 3

53. R to R 3 R to Q 7 (ch)

54. K to K 2 R to Q 3

55. R to R 3 R to Q 7 (ch)

56. K to K 2 R to Q 3

57. R to R 3 R to Q 7 (ch)

58. K to K 2 R to Q 3

59. R to R 3 R to Q 7 (ch)

TRAVELING GUIDE

READING RAILROAD. GREAT PRINCIPAL LINE FROM PHILADELPHIA TO THE INTERIOR OF PENNSYLVANIA.

PHILADELPHIA TO PITTSBURGH. THROUGH TRAIN. PHILADELPHIA LEAVES AT 9:00 P. M.

PHILADELPHIA TO PITTSBURGH. THROUGH TRAIN. PHILADELPHIA LEAVES AT 9:00 P. M.

PHILADELPHIA TO PITTSBURGH. THROUGH TRAIN. PHILADELPHIA LEAVES AT 9:00 P. M.

PHILADELPHIA TO PITTSBURGH. THROUGH TRAIN. PHILADELPHIA LEAVES AT 9:00 P. M.

PHILADELPHIA TO PITTSBURGH. THROUGH TRAIN. PHILADELPHIA LEAVES AT 9:00 P. M.

PHILADELPHIA TO PITTSBURGH. THROUGH TRAIN. PHILADELPHIA LEAVES AT 9:00 P. M.

PHILADELPHIA TO PITTSBURGH. THROUGH TRAIN. PHILADELPHIA LEAVES AT 9:00 P. M.

PHILADELPHIA TO PITTSBURGH. THROUGH TRAIN. PHILADELPHIA LEAVES AT 9:00 P. M.

PHILADELPHIA TO PITTSBURGH. THROUGH TRAIN. PHILADELPHIA LEAVES AT 9:00 P. M.

PHILADELPHIA TO PITTSBURGH. THROUGH TRAIN. PHILADELPHIA LEAVES AT 9:00 P. M.

PHILADELPHIA TO PITTSBURGH. THROUGH TRAIN. PHILADELPHIA LEAVES AT 9:00 P. M.

PHILADELPHIA TO PITTSBURGH. THROUGH TRAIN. PHILADELPHIA LEAVES AT 9:00 P. M.

TRAVELING GUIDE

PENNSYLVANIA RAILROAD. THROUGH TRAIN. PHILADELPHIA LEAVES AT 9:00 P. M.

PENNSYLVANIA RAILROAD. THROUGH TRAIN. PHILADELPHIA LEAVES AT 9:00 P. M.

PENNSYLVANIA RAILROAD. THROUGH TRAIN. PHILADELPHIA LEAVES AT 9:00 P. M.

PENNSYLVANIA RAILROAD. THROUGH TRAIN. PHILADELPHIA LEAVES AT 9:00 P. M.

PENNSYLVANIA RAILROAD. THROUGH TRAIN. PHILADELPHIA LEAVES AT 9:00 P. M.

PENNSYLVANIA RAILROAD. THROUGH TRAIN. PHILADELPHIA LEAVES AT 9:00 P. M.

PENNSYLVANIA RAILROAD. THROUGH TRAIN. PHILADELPHIA LEAVES AT 9:00 P. M.

PENNSYLVANIA RAILROAD. THROUGH TRAIN. PHILADELPHIA LEAVES AT 9:00 P. M.

PENNSYLVANIA RAILROAD. THROUGH TRAIN. PHILADELPHIA LEAVES AT 9:00 P. M.

PENNSYLVANIA RAILROAD. THROUGH TRAIN. PHILADELPHIA LEAVES AT 9:00 P. M.

PENNSYLVANIA RAILROAD. THROUGH TRAIN. PHILADELPHIA LEAVES AT 9:00 P. M.

PENNSYLVANIA RAILROAD. THROUGH TRAIN. PHILADELPHIA LEAVES AT 9:00 P. M.

PENNSYLVANIA RAILROAD. THROUGH TRAIN. PHILADELPHIA LEAVES AT 9:00 P. M.

TRAVELING GUIDE

PHILADELPHIA, GERMANIA, HANNOVER, BRUNSWICK, SAXONY, AND SILESIA RAILROADS.

PHILADELPHIA, GERMANIA, HANNOVER, BRUNSWICK, SAXONY, AND SILESIA RAILROADS.

PHILADELPHIA, GERMANIA, HANNOVER, BRUNSWICK, SAXONY, AND SILESIA RAILROADS.

PHILADELPHIA, GERMANIA, HANNOVER, BRUNSWICK, SAXONY, AND SILESIA RAILROADS.

PHILADELPHIA, GERMANIA, HANNOVER, BRUNSWICK, SAXONY, AND SILESIA RAILROADS.

PHILADELPHIA, GERMANIA, HANNOVER, BRUNSWICK, SAXONY, AND SILESIA RAILROADS.

PHILADELPHIA, GERMANIA, HANNOVER, BRUNSWICK, SAXONY, AND SILESIA RAILROADS.

PHILADELPHIA, GERMANIA, HANNOVER, BRUNSWICK, SAXONY, AND SILESIA RAILROADS.

PHILADELPHIA, GERMANIA, HANNOVER, BRUNSWICK, SAXONY, AND SILESIA RAILROADS.

PHILADELPHIA, GERMANIA, HANNOVER, BRUNSWICK, SAXONY, AND SILESIA RAILROADS.

PHILADELPHIA, GERMANIA, HANNOVER, BRUNSWICK, SAXONY, AND SILESIA RAILROADS.

PHILADELPHIA, GERMANIA, HANNOVER, BRUNSWICK, SAXONY, AND SILESIA RAILROADS.

PHILADELPHIA, GERMANIA, HANNOVER, BRUNSWICK, SAXONY, AND SILESIA RAILROADS.

FOR NEW YORK EXPRESS STEAMSHIP LINE

WASHINGTON, Captain Chichester. VIRGINIA, Captain Baker.

WASHINGTON, Captain Chichester. VIRGINIA, Captain Baker.

WASHINGTON, Captain Chichester. VIRGINIA, Captain Baker.

WASHINGTON, Captain Chichester. VIRGINIA, Captain Baker.

WASHINGTON, Captain Chichester. VIRGINIA, Captain Baker.

WASHINGTON, Captain Chichester. VIRGINIA, Captain Baker.

WASHINGTON, Captain Chichester. VIRGINIA, Captain Baker.

WASHINGTON, Captain Chichester. VIRGINIA, Captain Baker.

WASHINGTON, Captain Chichester. VIRGINIA, Captain Baker.

WASHINGTON, Captain Chichester. VIRGINIA, Captain Baker.

WASHINGTON, Captain Chichester. VIRGINIA, Captain Baker.

WASHINGTON, Captain Chichester. VIRGINIA, Captain Baker.

WASHINGTON, Captain Chichester. VIRGINIA, Captain Baker.