

CHESS COLUMN PHILADELPHIA EVENING BULLETIN, FRIDAY, February 24, 1886.

All communications for this column must be directed "Chess Editor of Evening Bulletin," and should reach the office, at latest, on Thursday morning. All Problems must be accompanied by the solution and name of the composer.

Answers to Correspondents. "M. P. JOHNSON."—Our paper is sent to you regularly. We regret that it has not reached you. We will now address to rue de Fleurus.

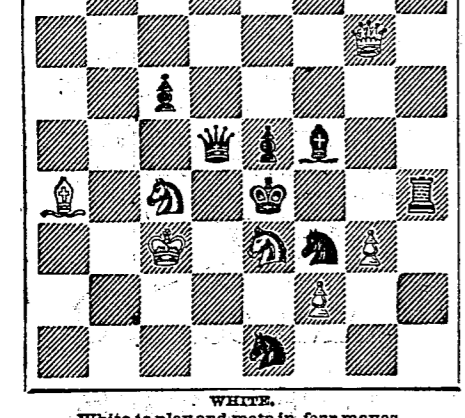
"B. H."—Solution correct. The pawn and two move match between Messrs. Reichhelm and Jellett now stands: Reichhelm, 3; Jellett, 3; Drawn, 1.

A match by correspondence has been arranged between the New York and Kingston Chess Clubs, and playing will be commenced immediately. The contest will consist of three games, which will be played simultaneously. The New York Committee consists of Messrs. J. C. Warner, Barnard and W. Johnson, and Kingston is represented by Dr. J. O. Van Hovenberg, Dr. Finch and Mr. J. C. Romney, the Chess editor of the Kingston Journal.

New York Tournament.—The play in the first section stands thus: Mackenzie, 3; Barnett, 0; Drawn, 1; Thompson, 3; Ware, 1.

The Chess World, for February, contains the following remarks on the Steinitz-de Vere match: "We have not examined many of the games, but some who have, say that Mr. Steinitz must have greatly mistaken his powers, or must have been very indolently studied when he undertook the task of giving odds to a player of Mr. de Vere's capabilities. From what we have seen of the play, we agree with them; but the error committed by Mr. Steinitz in consenting to this match, is as nothing compared to that which he is rumored to have in contemplation, to wit: the challenging of Mr. Anderssen to a contest, upon even terms, for \$100 aside! We suspect, however, and hope that this absurd report will prove to be an idle hoax." The report of the contemplated match seems to be true, and we ourselves think that Mr. Steinitz will be beaten, especially as it is reported that Mr. Anderssen, like certain gambling Chess players, plays best for money.

Problem No. 423. BY N. C. REID, M. D. BLACK.



White to play and mate in four moves.

Solution to No. 423. 1. Q to K5 B to K2 2. Q to Q5 (ch) Q to K3 3. Q to Kt5 Q to K6 (ch) (A) 4. Q x Q B x B 5. Q x B P to Q4 6. Q x P (ch) K to Kt2 7. Q to K7 (ch) K to Kt3 8. B to B6 Kt to B3 9. Q to Kt8 mate.

Chess in Philadelphia. Sixth game of the match between Mr. Reichhelm, giving pawn and two moves, and Mr. Jellett.

Chess in New York. Sixth, and last game, of the Mackenzie-Stanley match.

Answers to Correspondents. "M. P. JOHNSON."—Our paper is sent to you regularly. We regret that it has not reached you. We will now address to rue de Fleurus.

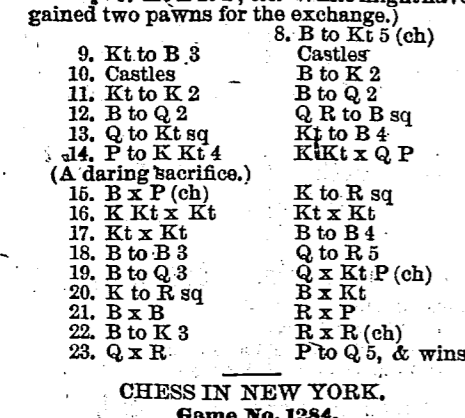
"B. H."—Solution correct. The pawn and two move match between Messrs. Reichhelm and Jellett now stands: Reichhelm, 3; Jellett, 3; Drawn, 1.

A match by correspondence has been arranged between the New York and Kingston Chess Clubs, and playing will be commenced immediately. The contest will consist of three games, which will be played simultaneously.

New York Tournament.—The play in the first section stands thus: Mackenzie, 3; Barnett, 0; Drawn, 1; Thompson, 3; Ware, 1.

The Chess World, for February, contains the following remarks on the Steinitz-de Vere match: "We have not examined many of the games, but some who have, say that Mr. Steinitz must have greatly mistaken his powers, or must have been very indolently studied when he undertook the task of giving odds to a player of Mr. de Vere's capabilities. From what we have seen of the play, we agree with them; but the error committed by Mr. Steinitz in consenting to this match, is as nothing compared to that which he is rumored to have in contemplation, to wit: the challenging of Mr. Anderssen to a contest, upon even terms, for \$100 aside! We suspect, however, and hope that this absurd report will prove to be an idle hoax."

Problem No. 423. BY N. C. REID, M. D. BLACK.



White to play and mate in four moves.

Solution to No. 423. 1. Q to K5 B to K2 2. Q to Q5 (ch) Q to K3 3. Q to Kt5 Q to K6 (ch) (A) 4. Q x Q B x B 5. Q x B P to Q4 6. Q x P (ch) K to Kt2 7. Q to K7 (ch) K to Kt3 8. B to B6 Kt to B3 9. Q to Kt8 mate.

Chess in Philadelphia. Sixth game of the match between Mr. Reichhelm, giving pawn and two moves, and Mr. Jellett.

Chess in New York. Sixth, and last game, of the Mackenzie-Stanley match.

Answers to Correspondents. "M. P. JOHNSON."—Our paper is sent to you regularly. We regret that it has not reached you. We will now address to rue de Fleurus.

"B. H."—Solution correct. The pawn and two move match between Messrs. Reichhelm and Jellett now stands: Reichhelm, 3; Jellett, 3; Drawn, 1.

A match by correspondence has been arranged between the New York and Kingston Chess Clubs, and playing will be commenced immediately. The contest will consist of three games, which will be played simultaneously.

New York Tournament.—The play in the first section stands thus: Mackenzie, 3; Barnett, 0; Drawn, 1; Thompson, 3; Ware, 1.

The Chess World, for February, contains the following remarks on the Steinitz-de Vere match: "We have not examined many of the games, but some who have, say that Mr. Steinitz must have greatly mistaken his powers, or must have been very indolently studied when he undertook the task of giving odds to a player of Mr. de Vere's capabilities. From what we have seen of the play, we agree with them; but the error committed by Mr. Steinitz in consenting to this match, is as nothing compared to that which he is rumored to have in contemplation, to wit: the challenging of Mr. Anderssen to a contest, upon even terms, for \$100 aside! We suspect, however, and hope that this absurd report will prove to be an idle hoax."

SHIPPING FOR NEW YORK. EXPRESS STEAMSHIP LINE.

Have commenced their regular OUTSIDE trips. THE NEW and first class Steamships.

WASHINGTON, Captain Chichester; NORFOLK, Captain Vance; ALEXANDRIA, Captain Hattrick; VIRGINIA, Captain Smitter.

Leave from New York, THURSDAY, FEBRUARY 23, 1886, at 10 A.M. for Philadelphia, and from Philadelphia, THURSDAY, FEBRUARY 24, 1886, at 10 A.M. for New York.

These Steamships usually sail at low rates. Freight reduced 10% for outside trips.

WM. F. CLYDE & CO., Agents, 117 South Street, New York.

STRENGTHENING AND REVULGENT. M. PLASTERS, with the plumb of silk, the strength and softness of hair.

DRUGS. COD LIVER OIL.—Twenty-five barrels, new made. Cod Liver Oil, of very superior quality.

ENGLISH AND FOREIGN BURGUNDY. French Cognac, Composition Mouton, Old Brandy, Cognac, etc.

ROBERT SHOEMAKER & CO. N. E. CORNER N. FOURTH AND RACE STREETS. Wholesale and Retail Dealers in all kinds of Footwear.

ROBERT SHOEMAKER & CO. N. E. CORNER N. FOURTH AND RACE STREETS. Wholesale and Retail Dealers in all kinds of Footwear.

THE NEW YORK PIPE.—A SIMPLE GENUINITY. A portable and convenient for the application of any of the internal structure of the pipe.

REMOVAL. JAMES J. HENRY has removed his LAW OFFICES to No. 411 LYNDEN ST.

REMOVAL. JAMES S. REINDELL, Saltmaker, has removed his office to No. 222 North Delaware Avenue.

REMOVAL. JAMES S. REINDELL, Saltmaker, has removed his office to No. 222 North Delaware Avenue.

REMOVAL. JAMES S. REINDELL, Saltmaker, has removed his office to No. 222 North Delaware Avenue.

REMOVAL. JAMES S. REINDELL, Saltmaker, has removed his office to No. 222 North Delaware Avenue.

REMOVAL. JAMES S. REINDELL, Saltmaker, has removed his office to No. 222 North Delaware Avenue.

REMOVAL. JAMES S. REINDELL, Saltmaker, has removed his office to No. 222 North Delaware Avenue.

REMOVAL. JAMES S. REINDELL, Saltmaker, has removed his office to No. 222 North Delaware Avenue.

REMOVAL. JAMES S. REINDELL, Saltmaker, has removed his office to No. 222 North Delaware Avenue.

REMOVAL. JAMES S. REINDELL, Saltmaker, has removed his office to No. 222 North Delaware Avenue.

REMOVAL. JAMES S. REINDELL, Saltmaker, has removed his office to No. 222 North Delaware Avenue.

REMOVAL. JAMES S. REINDELL, Saltmaker, has removed his office to No. 222 North Delaware Avenue.

REMOVAL. JAMES S. REINDELL, Saltmaker, has removed his office to No. 222 North Delaware Avenue.

REMOVAL. JAMES S. REINDELL, Saltmaker, has removed his office to No. 222 North Delaware Avenue.

REMOVAL. JAMES S. REINDELL, Saltmaker, has removed his office to No. 222 North Delaware Avenue.

REMOVAL. JAMES S. REINDELL, Saltmaker, has removed his office to No. 222 North Delaware Avenue.

REMOVAL. JAMES S. REINDELL, Saltmaker, has removed his office to No. 222 North Delaware Avenue.

REMOVAL. JAMES S. REINDELL, Saltmaker, has removed his office to No. 222 North Delaware Avenue.

TRAVELING GUIDE. PHILADELPHIA, FRIDAY, FEBRUARY 23, 1886.

TRAVELING GUIDE. PHILADELPHIA, FRIDAY, FEBRUARY 23, 1886.

TRAVELING GUIDE. PHILADELPHIA, FRIDAY, FEBRUARY 23, 1886.

TRAVELING GUIDE. PHILADELPHIA, FRIDAY, FEBRUARY 23, 1886.

TRAVELING GUIDE. PHILADELPHIA, FRIDAY, FEBRUARY 23, 1886.

TRAVELING GUIDE. PHILADELPHIA, FRIDAY, FEBRUARY 23, 1886.

TRAVELING GUIDE. PHILADELPHIA, FRIDAY, FEBRUARY 23, 1886.

TRAVELING GUIDE. PHILADELPHIA, FRIDAY, FEBRUARY 23, 1886.

TRAVELING GUIDE. PHILADELPHIA, FRIDAY, FEBRUARY 23, 1886.

TRAVELING GUIDE. PHILADELPHIA, FRIDAY, FEBRUARY 23, 1886.

TRAVELING GUIDE. PHILADELPHIA, FRIDAY, FEBRUARY 23, 1886.

TRAVELING GUIDE. PHILADELPHIA, FRIDAY, FEBRUARY 23, 1886.

TRAVELING GUIDE. PHILADELPHIA, FRIDAY, FEBRUARY 23, 1886.

TRAVELING GUIDE. PHILADELPHIA, FRIDAY, FEBRUARY 23, 1886.

TRAVELING GUIDE. PHILADELPHIA, FRIDAY, FEBRUARY 23, 1886.

TRAVELING GUIDE. PHILADELPHIA, FRIDAY, FEBRUARY 23, 1886.

TRAVELING GUIDE. PHILADELPHIA, FRIDAY, FEBRUARY 23, 1886.

TRAVELING GUIDE. PHILADELPHIA, FRIDAY, FEBRUARY 23, 1886.

TRAVELING GUIDE. PHILADELPHIA, FRIDAY, FEBRUARY 23, 1886.

TRAVELING GUIDE. PHILADELPHIA, FRIDAY, FEBRUARY 23, 1886.

TRAVELING GUIDE. PHILADELPHIA, FRIDAY, FEBRUARY 23, 1886.

TRAVELING GUIDE. PHILADELPHIA, FRIDAY, FEBRUARY 23, 1886.

TRAVELING GUIDE. PHILADELPHIA, FRIDAY, FEBRUARY 23, 1886.

TRAVELING GUIDE. PHILADELPHIA, FRIDAY, FEBRUARY 23, 1886.

TRAVELING GUIDE. PHILADELPHIA, FRIDAY, FEBRUARY 23, 1886.

TRAVELING GUIDE. PHILADELPHIA, FRIDAY, FEBRUARY 23, 1886.

TRAVELING GUIDE. PHILADELPHIA, FRIDAY, FEBRUARY 23, 1886.

TRAVELING GUIDE. PHILADELPHIA, FRIDAY, FEBRUARY 23, 1886.

TRAVELING GUIDE. PHILADELPHIA, FRIDAY, FEBRUARY 23, 1886.

TRAVELING GUIDE. PHILADELPHIA, FRIDAY, FEBRUARY 23, 1886.

TRAVELING GUIDE. PHILADELPHIA, FRIDAY, FEBRUARY 23, 1886.

TRAVELING GUIDE. PHILADELPHIA, FRIDAY, FEBRUARY 23, 1886.

TRAVELING GUIDE. PHILADELPHIA, FRIDAY, FEBRUARY 23, 1886.

TRAVELING GUIDE. PHILADELPHIA, FRIDAY, FEBRUARY 23, 1886.

TRAVELING GUIDE. PHILADELPHIA, FRIDAY, FEBRUARY 23, 1886.

TRAVELING GUIDE. PHILADELPHIA, FRIDAY, FEBRUARY 23, 1886.

TRAVELING GUIDE. PHILADELPHIA, FRIDAY, FEBRUARY 23, 1886.

TRAVELING GUIDE. PHILADELPHIA, FRIDAY, FEBRUARY 23, 1886.

TRAVELING GUIDE. PHILADELPHIA, FRIDAY, FEBRUARY 23, 1886.

TRAVELING GUIDE. PHILADELPHIA, FRIDAY, FEBRUARY 23, 1886.

TRAVELING GUIDE. PHILADELPHIA, FRIDAY, FEBRUARY 23, 1886.

TRAVELING GUIDE. PHILADELPHIA, FRIDAY, FEBRUARY 23, 1886.

TRAVELING GUIDE. PHILADELPHIA, FRIDAY, FEBRUARY 23, 1886.

TRAVELING GUIDE. PHILADELPHIA, FRIDAY, FEBRUARY 23, 1886.

TRAVELING GUIDE. PHILADELPHIA, FRIDAY, FEBRUARY 23, 1886.

TRAVELING GUIDE. PHILADELPHIA, FRIDAY, FEBRUARY 23, 1886.

TRAVELING GUIDE. PHILADELPHIA, FRIDAY, FEBRUARY 23, 1886.

TRAVELING GUIDE. PHILADELPHIA, FRIDAY, FEBRUARY 23, 1886.

TRAVELING GUIDE. PHILADELPHIA, FRIDAY, FEBRUARY 23, 1886.

TRAVELING GUIDE. PHILADELPHIA, FRIDAY, FEBRUARY 23, 1886.

TRAVELING GUIDE. PHILADELPHIA, FRIDAY, FEBRUARY 23, 1886.

TRAVELING GUIDE. PHILADELPHIA, FRIDAY, FEBRUARY 23, 1886.

TRAVELING GUIDE. PHILADELPHIA, FRIDAY, FEBRUARY 23, 1886.

TRAVELING GUIDE. PHILADELPHIA, FRIDAY, FEBRUARY 23, 1886.

TRAVELING GUIDE. PHILADELPHIA, FRIDAY, FEBRUARY 23, 1886.

TRAVELING GUIDE. PHILADELPHIA, FRIDAY, FEBRUARY 23, 1886.

TRAVELING GUIDE. PHILADELPHIA, FRIDAY, FEBRUARY 23, 1886.

TRAVELING GUIDE. PHILADELPHIA, FRIDAY, FEBRUARY 23, 1886.

TRAVELING GUIDE. PHILADELPHIA, FRIDAY, FEBRUARY 23, 1886.

TRAVELING GUIDE. PHILADELPHIA, FRIDAY, FEBRUARY 23, 1886.

TRAVELING GUIDE. PHILADELPHIA, FRIDAY, FEBRUARY 23, 1886.

TRAVELING GUIDE. PHILADELPHIA, FRIDAY, FEBRUARY 23, 1886.

TRAVELING GUIDE. PHILADELPHIA, FRIDAY, FEBRUARY 23, 1886.

TRAVELING GUIDE. PHILADELPHIA, FRIDAY, FEBRUARY 23, 1886.

TRAVELING GUIDE. PHILADELPHIA, FRIDAY, FEBRUARY 23, 1886.

TRAVELING GUIDE. PHILADELPHIA, FRIDAY, FEBRUARY 23, 1886.

TRAVELING GUIDE. PHILADELPHIA, FRIDAY, FEBRUARY 23, 1886.

TRAVELING GUIDE. PHILADELPHIA, FRIDAY, FEBRUARY 23, 1886.

TRAVELING GUIDE. PHILADELPHIA, FRIDAY, FEBRUARY 23, 1886.

TRAVELING GUIDE. PHILADELPHIA, FRIDAY, FEBRUARY 23, 1886.

TRAVELING GUIDE. PHILADELPHIA, FRIDAY, FEBRUARY 23, 1886.

TRAVELING GUIDE. PHILADELPHIA, FRIDAY, FEBRUARY 23, 1886.

TRAVELING GUIDE. PHILADELPHIA, FRIDAY, FEBRUARY 23, 1886.

TRAVELING GUIDE. PHILADELPHIA, FRIDAY, FEBRUARY 23, 1886.

TRAVELING GUIDE. PHILADELPHIA, FRIDAY, FEBRUARY 23, 1886.

TRAVELING GUIDE. PHILADELPHIA, FRIDAY, FEBRUARY 23, 1886.

TRAVELING GUIDE. PHILADELPHIA, FRIDAY, FEBRUARY 23, 1886.

TRAVELING GUIDE. PHILADELPHIA, FRIDAY, FEBRUARY 23, 1886.

TRAVELING GUIDE. PHILADELPHIA, FRIDAY, FEBRUARY 23, 1886.

TRAVELING GUIDE. PHILADELPHIA, FRIDAY, FEBRUARY 23, 1886.

TRAVELING GUIDE. PHILADELPHIA, FRIDAY, FEBRUARY 23, 1886.

TRAVELING GUIDE. PHILADELPHIA, FRIDAY, FEBRUARY 23, 1886.

TRAVELING GUIDE. PHILADELPHIA, FRIDAY, FEBRUARY 23, 1886.

TRAVELING GUIDE. PHILADELPHIA, FRIDAY, FEBRUARY 23, 1886.

TRAVELING GUIDE. PHILADELPHIA, FRIDAY, FEBRUARY 23, 1886.

TRAVELING GUIDE. PHILADELPHIA, FRIDAY, FEBRUARY 23, 1886.

TRAVELING GUIDE. PHILADELPHIA, FRIDAY, FEBRUARY 23, 1886.

TRAVELING GUIDE. PHILADELPHIA, FRIDAY, FEBRUARY 23, 1886.

TRAVELING GUIDE. PHILADELPHIA, FRIDAY, FEBRUARY 23, 1886.

TRAVELING GUIDE. PHILADELPHIA, FRIDAY, FEBRUARY 23, 1886.

TRAVELING GUIDE. PHILADELPHIA, FRIDAY, FEBRUARY 23, 1886.

TRAVELING GUIDE. PHILADELPHIA, FRIDAY, FEBRUARY 23, 1886.

TRAVELING GUIDE. PHILADELPHIA, FRIDAY, FEBRUARY 23, 1886.

TRAVELING GUIDE. PHILADELPHIA, FRIDAY, FEBRUARY 23, 1886.

TRAVELING GUIDE. PHILADELPHIA, FRIDAY, FEBRUARY 23, 1886.

TRAVELING GUIDE. PHILADELPHIA, FRIDAY, FEBRUARY 23, 1886.

TRAVELING GUIDE. PHILADELPHIA, FRIDAY, FEBRUARY 23, 1886.

TRAVELING GUIDE. PHILADELPHIA, FRIDAY, FEBRUARY 23, 1886.

TRAVELING GUIDE. PHILADELPHIA, FRIDAY, FEBRUARY 23, 1886.

TRAVELING GUIDE. PHILADELPHIA, FRIDAY, FEBRUARY 23, 1886.

TRAVELING GUIDE. PHILADELPHIA, FRIDAY, FEBRUARY 23, 1886.

TRAVELING GUIDE. PHILADELPHIA, FRIDAY, FEBRUARY 23, 1886.

TRAVELING GUIDE. PHILADELPHIA, FRIDAY, FEBRUARY 23, 1886.

TRAVELING GUIDE. PHILADELPHIA, FRIDAY, FEBRUARY 23, 1886.

TRAVELING GUIDE. PHILADELPHIA, FRIDAY, FEBRUARY 23, 1886.

TRAVELING GUIDE. PHILADELPHIA, FRIDAY, FEBRUARY 23, 1886.

TRAVELING GUIDE. PHILADELPHIA, FRIDAY, FEBRUARY 23, 1886.

TRAVELING GUIDE. PHILADELPHIA, FRIDAY, FEBRUARY 23, 1886.

TRAVELING GUIDE. PHILADELPHIA, FRIDAY, FEBRUARY 23, 1886.

TRAVELING GUIDE. PHILADELPHIA, FRIDAY, FEBRUARY 23, 1886.

TRAVELING GUIDE. PHILADELPHIA, FRIDAY, FEBRUARY 23, 1886.

TRAVELING GUIDE. PHILADELPHIA, FRIDAY, FEBRUARY 23, 1886.

TRAVELING GUIDE. PHILADELPHIA, FRIDAY, FEBRUARY 23, 1886.

TRAVELING GUIDE. PHILADELPHIA, FRIDAY, FEBRUARY 23, 1886.

TRAVELING GUIDE. PHILADELPHIA, FRIDAY, FEBRUARY 23, 1886.

TRAVELING GUIDE. PHILADELPHIA, FRIDAY, FEBRUARY 23, 1886.

TRAVELING GUIDE. PHILADELPHIA, FRIDAY, FEBRUARY 23, 1886.

TRAVELING GUIDE. PHILADELPHIA, FRIDAY, FEBRUARY 23, 1886.

TRAVELING GUIDE. PHILADELPHIA, FRIDAY, FEBRUARY 23, 1886.

TRAVELING GUIDE. PHILADELPHIA, FRIDAY, FEBRUARY 23, 1886.