

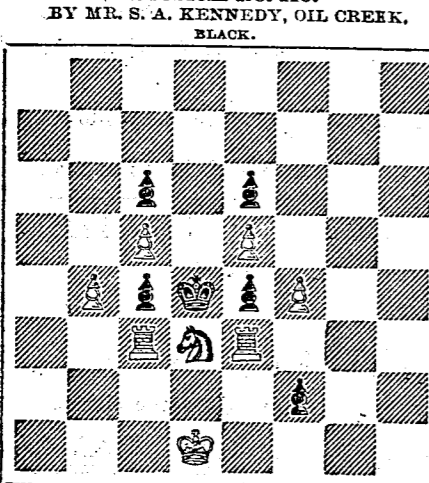
CHESS COLUMN

PHILADELPHIA EVENING BULLETIN, FRIDAY, December 22, 1865. All communications for this column must be directed to Chess Editor of EVENING BULLETIN, and should reach the office, at latest, on Thursday morning. All problems must be accompanied by the solution and name of the composer.

Answers to Correspondents. "W. R." We are not in the habit of sending our paper in return for contributions.

ANNUAL SOIREE OF THE BRISTOL CHESS CLUB.—The annual soiree of the Bristol Chess Club was held in the Lecture Hall of the Athenaeum, Bristol, on the 8th inst. There was a large attendance of ladies and gentlemen, amongst the latter being Captain H. A. Kennedy, Messrs. E. Thord, W. Hampton (of the St. George's Chess Club), N. Feiden, Thomson, McKee, Berry, Hall, lowry, Dr. Benham, the Revs. W. Evans, A. C. Rowley, C. Ward, &c. The Hall was gaily decorated with flags and banners, and some beautiful specimens of Chinese and other Chessmen were contributed by some of the members. The company assembled shortly after six o'clock, and play was immediately commenced, and continued with little intermission until nearly midnight. The chief interest during the evening, however, was the playing of nine games simultaneously by Mr. Thord against a number of amateurs. These games were eagerly watched by the bystanders, and the quickness and accuracy with which the single player maintained and controlled his position, the result of the contest was that Mr. Thord won every game. The company present were greatly pleased with the entertainment provided for them, and expressed their thanks to Messrs. Boorne and Thord for their exertions. In the course of the evening the new chemical toy, "the fiery serpent," was exhibited, and attracted great attention.—London Era.

Problem No. 416. BY MR. S. A. REXFORD, OIL CREEK, BLACK. White to play and make in four moves.



White to play and make in four moves.

CHESS IN PHILADELPHIA. Game No. 1255. Between Mr. Reichhelm, giving the odds of a Knight, and Mr. W. H. Sayren.

Game No. 1255. Between Mr. Reichhelm, giving the odds of a Knight, and Mr. W. H. Sayren. (Remove White's Queen's Knight.) (Knight's Gambit.)

Game No. 1256. Between Mr. Reichhelm, giving the odds of a Knight, and Mr. W. H. Sayren. (Remove White's Queen's Knight.) (Knight's Gambit.)

Game No. 1259. (French Opening.)

Game No. 1259. (French Opening.)

Game No. 1259. (French Opening.)

Game No. 1259. (French Opening.)

CHESS IN DUBLIN.

Game No. 1257. Played in the late Dublin Tournament No. 1, between Mr. Steinitz and the Rev. G. A. McDonnell.

(Roy Lopez Knight's Game.) W. (Mr. McDonnell.) B. (Mr. Steinitz.)

Game No. 1258. The following are two of five games played simultaneously by Mr. Steinitz, without sight of a Chessboard, at the Dublin Chess Congress.

Queen's Knight's Opening. W. (Mr. Steinitz.) B. (Mr. G. F. Barry.)

Queen's Knight's Opening. W. (Mr. Steinitz.) B. (Mr. G. F. Barry.)

Queen's Knight's Opening. W. (Mr. Steinitz.) B. (Mr. G. F. Barry.)

Queen's Knight's Opening. W. (Mr. Steinitz.) B. (Mr. G. F. Barry.)

Queen's Knight's Opening. W. (Mr. Steinitz.) B. (Mr. G. F. Barry.)

Queen's Knight's Opening. W. (Mr. Steinitz.) B. (Mr. G. F. Barry.)

Queen's Knight's Opening. W. (Mr. Steinitz.) B. (Mr. G. F. Barry.)

Queen's Knight's Opening. W. (Mr. Steinitz.) B. (Mr. G. F. Barry.)

Queen's Knight's Opening. W. (Mr. Steinitz.) B. (Mr. G. F. Barry.)

Queen's Knight's Opening. W. (Mr. Steinitz.) B. (Mr. G. F. Barry.)

Queen's Knight's Opening. W. (Mr. Steinitz.) B. (Mr. G. F. Barry.)

TRAVELING GUIDE.

READING RAILROAD. PHILADELPHIA TO NEW YORK VIA THE PENNSYLVANIA RAILROAD. PHILADELPHIA TO BALTIMORE VIA THE BALTIMORE AND ANNE ARUNDEL BAY RAILROAD.

READING RAILROAD. PHILADELPHIA TO NEW YORK VIA THE PENNSYLVANIA RAILROAD. PHILADELPHIA TO BALTIMORE VIA THE BALTIMORE AND ANNE ARUNDEL BAY RAILROAD.

READING RAILROAD. PHILADELPHIA TO NEW YORK VIA THE PENNSYLVANIA RAILROAD. PHILADELPHIA TO BALTIMORE VIA THE BALTIMORE AND ANNE ARUNDEL BAY RAILROAD.

READING RAILROAD. PHILADELPHIA TO NEW YORK VIA THE PENNSYLVANIA RAILROAD. PHILADELPHIA TO BALTIMORE VIA THE BALTIMORE AND ANNE ARUNDEL BAY RAILROAD.

READING RAILROAD. PHILADELPHIA TO NEW YORK VIA THE PENNSYLVANIA RAILROAD. PHILADELPHIA TO BALTIMORE VIA THE BALTIMORE AND ANNE ARUNDEL BAY RAILROAD.

READING RAILROAD. PHILADELPHIA TO NEW YORK VIA THE PENNSYLVANIA RAILROAD. PHILADELPHIA TO BALTIMORE VIA THE BALTIMORE AND ANNE ARUNDEL BAY RAILROAD.

READING RAILROAD. PHILADELPHIA TO NEW YORK VIA THE PENNSYLVANIA RAILROAD. PHILADELPHIA TO BALTIMORE VIA THE BALTIMORE AND ANNE ARUNDEL BAY RAILROAD.

READING RAILROAD. PHILADELPHIA TO NEW YORK VIA THE PENNSYLVANIA RAILROAD. PHILADELPHIA TO BALTIMORE VIA THE BALTIMORE AND ANNE ARUNDEL BAY RAILROAD.

READING RAILROAD. PHILADELPHIA TO NEW YORK VIA THE PENNSYLVANIA RAILROAD. PHILADELPHIA TO BALTIMORE VIA THE BALTIMORE AND ANNE ARUNDEL BAY RAILROAD.

TRAVELING GUIDE.

READING RAILROAD. PHILADELPHIA TO NEW YORK VIA THE PENNSYLVANIA RAILROAD. PHILADELPHIA TO BALTIMORE VIA THE BALTIMORE AND ANNE ARUNDEL BAY RAILROAD.

READING RAILROAD. PHILADELPHIA TO NEW YORK VIA THE PENNSYLVANIA RAILROAD. PHILADELPHIA TO BALTIMORE VIA THE BALTIMORE AND ANNE ARUNDEL BAY RAILROAD.

READING RAILROAD. PHILADELPHIA TO NEW YORK VIA THE PENNSYLVANIA RAILROAD. PHILADELPHIA TO BALTIMORE VIA THE BALTIMORE AND ANNE ARUNDEL BAY RAILROAD.

READING RAILROAD. PHILADELPHIA TO NEW YORK VIA THE PENNSYLVANIA RAILROAD. PHILADELPHIA TO BALTIMORE VIA THE BALTIMORE AND ANNE ARUNDEL BAY RAILROAD.

READING RAILROAD. PHILADELPHIA TO NEW YORK VIA THE PENNSYLVANIA RAILROAD. PHILADELPHIA TO BALTIMORE VIA THE BALTIMORE AND ANNE ARUNDEL BAY RAILROAD.

READING RAILROAD. PHILADELPHIA TO NEW YORK VIA THE PENNSYLVANIA RAILROAD. PHILADELPHIA TO BALTIMORE VIA THE BALTIMORE AND ANNE ARUNDEL BAY RAILROAD.

READING RAILROAD. PHILADELPHIA TO NEW YORK VIA THE PENNSYLVANIA RAILROAD. PHILADELPHIA TO BALTIMORE VIA THE BALTIMORE AND ANNE ARUNDEL BAY RAILROAD.

READING RAILROAD. PHILADELPHIA TO NEW YORK VIA THE PENNSYLVANIA RAILROAD. PHILADELPHIA TO BALTIMORE VIA THE BALTIMORE AND ANNE ARUNDEL BAY RAILROAD.

READING RAILROAD. PHILADELPHIA TO NEW YORK VIA THE PENNSYLVANIA RAILROAD. PHILADELPHIA TO BALTIMORE VIA THE BALTIMORE AND ANNE ARUNDEL BAY RAILROAD.

TRAVELING GUIDE.

READING RAILROAD. PHILADELPHIA TO NEW YORK VIA THE PENNSYLVANIA RAILROAD. PHILADELPHIA TO BALTIMORE VIA THE BALTIMORE AND ANNE ARUNDEL BAY RAILROAD.

READING RAILROAD. PHILADELPHIA TO NEW YORK VIA THE PENNSYLVANIA RAILROAD. PHILADELPHIA TO BALTIMORE VIA THE BALTIMORE AND ANNE ARUNDEL BAY RAILROAD.

READING RAILROAD. PHILADELPHIA TO NEW YORK VIA THE PENNSYLVANIA RAILROAD. PHILADELPHIA TO BALTIMORE VIA THE BALTIMORE AND ANNE ARUNDEL BAY RAILROAD.

READING RAILROAD. PHILADELPHIA TO NEW YORK VIA THE PENNSYLVANIA RAILROAD. PHILADELPHIA TO BALTIMORE VIA THE BALTIMORE AND ANNE ARUNDEL BAY RAILROAD.

READING RAILROAD. PHILADELPHIA TO NEW YORK VIA THE PENNSYLVANIA RAILROAD. PHILADELPHIA TO BALTIMORE VIA THE BALTIMORE AND ANNE ARUNDEL BAY RAILROAD.

READING RAILROAD. PHILADELPHIA TO NEW YORK VIA THE PENNSYLVANIA RAILROAD. PHILADELPHIA TO BALTIMORE VIA THE BALTIMORE AND ANNE ARUNDEL BAY RAILROAD.

READING RAILROAD. PHILADELPHIA TO NEW YORK VIA THE PENNSYLVANIA RAILROAD. PHILADELPHIA TO BALTIMORE VIA THE BALTIMORE AND ANNE ARUNDEL BAY RAILROAD.

READING RAILROAD. PHILADELPHIA TO NEW YORK VIA THE PENNSYLVANIA RAILROAD. PHILADELPHIA TO BALTIMORE VIA THE BALTIMORE AND ANNE ARUNDEL BAY RAILROAD.

READING RAILROAD. PHILADELPHIA TO NEW YORK VIA THE PENNSYLVANIA RAILROAD. PHILADELPHIA TO BALTIMORE VIA THE BALTIMORE AND ANNE ARUNDEL BAY RAILROAD.

TRAVELING GUIDE.

READING RAILROAD. PHILADELPHIA TO NEW YORK VIA THE PENNSYLVANIA RAILROAD. PHILADELPHIA TO BALTIMORE VIA THE BALTIMORE AND ANNE ARUNDEL BAY RAILROAD.

READING RAILROAD. PHILADELPHIA TO NEW YORK VIA THE PENNSYLVANIA RAILROAD. PHILADELPHIA TO BALTIMORE VIA THE BALTIMORE AND ANNE ARUNDEL BAY RAILROAD.

READING RAILROAD. PHILADELPHIA TO NEW YORK VIA THE PENNSYLVANIA RAILROAD. PHILADELPHIA TO BALTIMORE VIA THE BALTIMORE AND ANNE ARUNDEL BAY RAILROAD.

READING RAILROAD. PHILADELPHIA TO NEW YORK VIA THE PENNSYLVANIA RAILROAD. PHILADELPHIA TO BALTIMORE VIA THE BALTIMORE AND ANNE ARUNDEL BAY RAILROAD.

READING RAILROAD. PHILADELPHIA TO NEW YORK VIA THE PENNSYLVANIA RAILROAD. PHILADELPHIA TO BALTIMORE VIA THE BALTIMORE AND ANNE ARUNDEL BAY RAILROAD.

READING RAILROAD. PHILADELPHIA TO NEW YORK VIA THE PENNSYLVANIA RAILROAD. PHILADELPHIA TO BALTIMORE VIA THE BALTIMORE AND ANNE ARUNDEL BAY RAILROAD.

READING RAILROAD. PHILADELPHIA TO NEW YORK VIA THE PENNSYLVANIA RAILROAD. PHILADELPHIA TO BALTIMORE VIA THE BALTIMORE AND ANNE ARUNDEL BAY RAILROAD.

READING RAILROAD. PHILADELPHIA TO NEW YORK VIA THE PENNSYLVANIA RAILROAD. PHILADELPHIA TO BALTIMORE VIA THE BALTIMORE AND ANNE ARUNDEL BAY RAILROAD.

READING RAILROAD. PHILADELPHIA TO NEW YORK VIA THE PENNSYLVANIA RAILROAD. PHILADELPHIA TO BALTIMORE VIA THE BALTIMORE AND ANNE ARUNDEL BAY RAILROAD.

SHIPPING.

STEAM TO SAVANNAH, GA. SOUDER'S LINE. CARRYING THE UNITED STATES MAIL.

CUMBRIA. Captain CHARLES A. FRENCH. Having been unavoidably detained, will sail from Philadelphia on SATURDAY, December 23, at 10 o'clock, A. M. For freight or passage, having elegant accommodations, apply to

E. A. SOUDER & CO. GENERAL OFFICE. No. 20 North Delaware street.

FOR HAVANA. THE Steamship HENDRICK HUDSON, HOWES, Master.

Will sail on SATURDAY MORNING, December 23, at 6 o'clock. No freight received after Thursday. For freight or passage, apply to

THOMAS WATSON & SONS, 140 North Delaware street.

HAMILL'S PASSENGER OFFICE. The first-class mail passenger office direct. The first-class mail passenger office direct.

THE STEAMSHIP LINE DIRECT. The elegant City of New York, built by the screw steamship

City of New York, built by the screw steamship City of New York, built by the screw steamship

City of New York, built by the screw steamship City of New York, built by the screw steamship

City of New York, built by the screw steamship City of New York, built by the screw steamship

City of New York, built by the screw steamship City of New York, built by the screw steamship

City of New York, built by the screw steamship City of New York, built by the screw steamship

City of New York, built by the screw steamship City of New York, built by the screw steamship

City of New York, built by the screw steamship City of New York, built by the screw steamship

City of New York, built by the screw steamship City of New York, built by the screw steamship

City of New York, built by the screw steamship City of New York, built by the screw steamship

City of New York, built by the screw steamship City of New York, built by the screw steamship

City of New York, built by the screw steamship City of New York, built by the screw steamship

City of New York, built by the screw steamship City of New York, built by the screw steamship

City of New York, built by the screw steamship City of New York, built by the screw steamship

City of New York, built by the screw steamship City of New York, built by the screw steamship

City of New York, built by the screw steamship City of New York, built by the screw steamship

City of New York, built by the screw steamship City of New York, built by the screw steamship

City of New York, built by the screw steamship City of New York, built by the screw steamship

City of New York, built by the screw steamship City of New York, built by the screw steamship

City of New York, built by the screw steamship City of New York, built by the screw steamship

City of New York, built by the screw steamship City of New York, built by the screw steamship

City of New York, built by the screw steamship City of New York, built by the screw steamship