

# J. H. CHRISTIE, Furneries, Washington Street, Pet

JAMESTOWN CLOTHING STORE.

# Drugs, Patent Medicines, Petroleum Centre, Pa.

## THE OIL MARKETS.

OFFICE OF PETROLEUM CENTRE DAILY RECORD  
Nov. 16 1871  
The market is somewhat firmer than yesterday and exhibits a slight advance in prices. We quote at \$4.37 1/2. Seven cars seven cars sold at that figure.

Philadelphia, Nov. 16.  
Crude 12 1/2.  
Refined—22 1/2.  
Nov. 22; Dec. 23.  
Cases —  
Market—Very quiet.

Pittsburg, Nov. 16.  
Crude—spot, 12 1/2.  
Nov. 22 1/2.  
B. O. all year, 12 1/2.  
S. O. do. 11 1/2.  
Market—Unchanged.  
Refined—Spot, 22 1/2; Nov. 22; Dec. 22—Jan. 22 1/2.  
Market quiet and weak.

New York, Nov. 15.  
Crude—12 1/2.  
Refined 22 1/2.  
Market—weak.

TIDICUTE, Nov. 15.  
Market—\$4.00.  
OIL CITY, Nov. 15.  
Market—\$4.45-\$4.47 1/2.

TITUSVILLE, Nov. 15.  
Market—\$4.05-\$4.10.

PLEASANTVILLE, Nov. 15.  
Market—\$4 1/2.

ROUSEVILLE, Nov. 15.  
Market—\$4.20.

GOLDEN NEW YORK.  
New York, Nov. 15.  
Gold—111 3/4.

A. O. of U. W.  
Liberty Lodge No. 7, A. O. of U. W., meets every Monday evening at 7 o'clock, in Odd Fellow's Hall, Petroleum Centre, Penna.  
L. H. COLLOM, M. W.  
H. GRIFFES, R.



Petroleum Centre Lodge, No. 715, I. O. of O. F.  
Regular meeting nights Friday, at 7 o'clock. Signed, J. E. BOYLES, N. G.  
W. A. KELLER, A. Secy.  
Place of meeting, Main St., opposite McClintock House.

ARRIVAL AND DEPARTURE OF TRAINS ON O. C. & A. R. R.  
On and after Sunday, Aug. 13th, 1871, trains will run as follows:

ROUTE	NO. 5.	NO. 2.	NO. 1.
Leave Irvine.	12.45 P.M.	5.05 P.M.	
Leave Oil City	8.00 A.M.	2.30 P.M.	7.40 P.M.
" Pet. Cen	6.55 "	2.58 "	8.23 "
" Titusv.	7.55 "	4.45 "	9.10 "
Arrive Corry.	8.55 "	6.10 "	10.32 "
ROUTE	NO. 2.	NO. 4.	NO. 6.
Leave Corry.	11.00 A.M.	6.15 A.M.	5.50 P.M.
" Titusv.	12.45 P.M.	7.42 "	7.40 "
" P. Cen.	1.28 "	8.28 "	8.30 "
Arrive O. City	2.10 "	9.10 "	9.15 "
" Irvine.	4.40 "	12.01 "	

No. 5 and 6 run on Sunday.  
FREIGHT TRAINS NORTH.  
No. 10. No. 13. No. 11. No. 15. No. 9  
Le. O. C. 8.25 A.M. 11.20 A.M. 11.20 A.M. 6.54 A.M.  
Ar. P. C. 10.25 " 1.05 P.M. 12.31 P.M. 8.25 "  
Titus. 11.37 A.M. 2.45 " 2.00 " 9.55 "  
Ar. Corry 12.50 P.M.

FREIGHT TRAINS SOUTH.  
No. 10. No. 8. No. 16. No. 14. No. 20  
Le. Cor. 1.10 P.M.  
Le. Tit. 6.15 A.M. 8.30 A.M. 2.10 P.M. 11.35 A.M. 2.50 P.M.  
Ar. P. C. 8.10 " 10.02 " 3.59 P.M. 1.55 P.M. 4.30 "  
Ar. O. C. 9.30 " 11.00 " 4.30 " 5.40 " 5.30 "  
No. 22 Leave Union, 8.20 a. m.; Titusville, 10.45 a. m.; Pet. Centre, 2.30 p. m.; arrives at Oil City, 2.05 p. m.  
No. 12 Leaves Union 1.40 p. m.; Titusville, 4.05 p. m.; Pet. Centre, 5.45 p. m.; arrives at Oil City, 6.25 p. m.  
Oil City and Petroleum Centre freight, leaves Oil City 9.40 a. m., arrives at Petroleum Centre 11.20 a. m.; Leaves Petroleum Centre at 1.35 p. m., arrives at Oil City 3.00 p. m.  
1, 2, 3, 4, 5 and 6 are express trains.  
Nos. 19 and 20 are through accommodation, connecting at Corry and Irvinston for East and North.  
Nos. 13 and 14 freight accommodation.  
No. 17 and 18 run on Sunday between Titusville and Union.  
SILVER PALACE SLEEPING CARS.  
No. 4—Direct to Williamsport without change on Philadelphia and New York line.  
No. 1—Direct from Williamsport without change by Phil. and N. Y. line.  
No. 6—Direct from Pittsburgh without change.  
No. 8—Direct to Pittsburgh without change.  
Monday, June 5, 1871.

FRESH VACCINE VIRUS!  
An awful rash to get Vaccinated with fresh Virus, at Griffes Bros. Drug Store, Washington Street, Petroleum Centre. Without "your money or a pound of flesh" Free of charge and no questions asked—Bring on the little folks, nov. 11-th.  
CRANBERRIES.  
Just received a large quantity of those nice New Jersey CRANBERRIES at MEASE & ARMSTRONG'S.  
SWEET POTATOES.  
Nice SWEET POTATOES just received at nov 8-th MEASE & ARMSTRONG'S.  
BUFFALO CUT HAY, at Schermernhorn & TenEyck's, jul 12 th. Cor. 2nd & Washington Sts.  
The America Cook Stove at GORDON'S  
Opt. 4

POULTRY! POULTRY!  
ALL KINDS OF POULTRY,  
Chickens, Turkeys, Geese, Bucks.  
can be bought CHEAP FOR CASH by enquiring of  
JAN. HINDEN,  
at the American Hotel, Petroleum Centre, Pa.

# Carry the News to Mary AND HAVE HER UNDERSTAND THAT

Griffes Bros.

Have a large and select Stock of

**DRUGS!**  
Medicines,  
AND  
FANCY GOODS,  
Such as  
PERFUMES, TOILET ARTICLES, COSMETICS, BRUSHES, COMBS, TOWELS, HAND GLASSES,  
WALL PAPERS, WALKING CANES, STATIONERY, PATENT MEDICINES, POCKET BOOKS, CIGARS, the celebrated Wolverine and other brands, Tobacco, &c.

**WINE & LIQUOR**  
FOR MEDICINAL PURPOSES.

The Largest Stock of  
**Fireworks**  
For the Fourth of July trade in this section of the Oil Region.

Particular Attention paid to the getting up of Physician's Prescriptions.  
Washington-St., Petroleum Centre, Pa.

Griffes Bros.



LIVERY, FEED & SALE



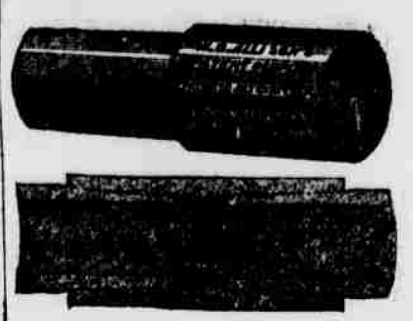
STABLES!

At the Depot, opposite the Central House,  
PETROLEUM CENTRE PA.  
And on Elm Street, Opposite the Eagle House,  
OIL CITY, PA.,  
T. McDONALD, Prop'r.

HORSES FED & BOARDED  
on Reasonable Terms. TRAINING of all kinds promptly attended to. Also, connected with the Livery Stable is a BREWERY.  
Parties who want of FICKBOARDS and WAGONS of all kinds, will do well to call on me, as I have the agency for some of the best manufacturers in the country, and will sell as cheap as they can be had at the manufacturers.  
Give me a call.  
T. McDONALD  
Petroleum Centre, Feb. 21st, 1871.

# W. CALLISON & SON'S

Philadelphia,  
Manufacturers of superior



**OIL WELL CASING.**  
AND  
**TUBING!**  
With plain and patent Coupling.

Our TUBING and CASING are manufactured with g. at care, expressly for the use of oil producers, being tested at the works before shipment with a pressure of 1,200 lbs. to the square inch.

NOTICE—Each length and socket is stamped with our trade mark. None other is genuine.

The danger heretofore experienced in having Tubing break at the Coupling is obviated by using Allison & Son's Tubing with patent Coupling.  
117-18.

MEASE & ARMSTRONG,  
Successors to E. H. Warner,  
WHOLESALE AND RETAIL

**Flour & Feed**  
Merchants.

THE Subscribers having bought the old stand of T. H. H. Warner, intending to enlarge the business and will keep always on hand the best the market affords. We will do a WHOLESALE AND RETAIL trade in the following products:

FLOUR, FEED, HAY and GRAIN  
of all kinds. We also have a very large stock of  
APPLES.  
We invite a share of public patronage, feeling confident we can give satisfaction in price and quality of goods.  
MEASE & ARMSTRONG,  
Petroleum Centre, Pa., Nov. 9, 1870

A. Leggett,  
(Successor to A. T. Leggett,  
Manufacturer and Dealer in

**HARNESSES.**  
Seed Bags,  
Valve Cups, &c

Experienced workmen are employed, and Harnesses of all kinds kept constantly on hand and made to order.  
FINE NEW HARNESSES, DOUBLE AND SINGLE, on hand at reasonable rates.  
C. Heinz's Pat. Seed-Eng For Sale.  
FANCY AND HORSE BLANKETS IN LARGE QUANTITIES  
There is no superior  
VALVE CUP

More than the one made in my shop, and they will be sold at \$12 per hundred or 50 cents a set.  
Main-st., below the McClintock House,  
Petroleum Centre, Pa., Nov. 17, 71.

H. WILBERT,  
IS now prepared to execute BECK AND MANN'S WORK IN ALL ITS BRANCHES, and is anxious to give satisfaction.  
PLASTERING done to order, BRICK CHIMNEYS put up. ALSO, BRICK and LIME concrete on hand and for sale.  
Residence—on Fifth Street, near the depot.  
Office—Petroleum Centre, Pa. Call on Nov. 17, 1871.

# STOVES, STOVES!



# STOVES!

I would respectfully call the attention of those wishing Cook or Heating Stoves, to call and examine my stock. The

# MORNING GLORY!

The pioneer of base burners. Has a mill grate, which entirely grinds out all slate or slinkers, thus keeping the fire clean and obviates the necessity of pulling out the fire to clean the grate. It is a perfect anti-duster, and a perpetual burner. The

# America Cook Stove!

With reservoir and warming closet, acknowledged by every one to be the most perfect in construction and finish of any Stove in the market. Is considered the most perfect baker of any Stove made. Also the

# PLYMOUTH ROCK!

A first class Cooking Stove with reservoir and warming closet. Also a large variety of other and different styles of

# Cook and Heating Stoves.

A large stock of TIN AND SHEET IRON WARE kept constantly on hand, with a complete stock of

# HARDWARE!

# OIL WELL SUPPLIES

Make to order GALVANIZED IRON SAND PUMPS which are considered the cheapest and safest pump now in use. Boston Tubing and Casing. New Bedford Bolt Rope Cables. The PITTSBURGH BELLOWS, The BEST IN MARKET.

# GILBERT GORDON.

## Philadelphia & Erie R. R.

SUMMER TIME TABLE

On and after Monday, Aug. 7th, 1871, the trains on the Philadelphia & Erie Railroad will run as follows:

WESTWARD.			
Mail Train leaves Philadelphia,	7.10 p.m.		
" " leaves Corry,	2.00 p.m.		
" " arrives at Erie,	3.30 p.m.		
Erie Expr. leaves Philadelphia,	12.30 p.m.		
" " leaves Corry,	6.20 a.m.		
" " arrives at Erie,	7.40 a.m.		
Warren Accommodation leaves Warren,	7.15 a.m.		
" " leaves Corry,	9.00 a.m.		
" " arrives at Erie,	10.28 a.m.		
Erie Accommodation leaves Warren,	4.40 p.m.		
" " leaves Corry,	6.15 p.m.		
" " arrives at Erie,	8.10 p.m.		
EASTWARD.			
Mail train leaves Erie,	11.30 a.m.		
" " leaves Corry,	1.30 p.m.		
" " arrives at Philadelphia,	7.30 a.m.		
Erie Expr. leaves Erie,	9.00 p.m.		
" " leaves Corry,	10.35 p.m.		
" " arrives at Philadelphia,	3.0 p.m.		
Warren Accommodation leaves Erie,	4.00 p.m.		
" " leaves Corry,	8.15 p.m.		
" " arrives at Warren,	8.50 p.m.		
Erie Accommodation leaves Erie at	7.50 a.m.		
" " leaves Corry	10.10 a.m.		
" " arrives at Warren	11.40 a.m.		

Mail Ret connects east and west at Erie with L. S. & M. S. Ry., and at Corry and Irvinston with Oil Creek and Allegheny River Railways.  
It and Corry and Irvinston with O. C. & A. R. Ry.  
Warren Accommodation East and West with trains on L. S. & M. S. Ry east and west, and at Corry with O. C. & A. R. Ry.  
W. A. BALDWIN,  
General Superintendent.