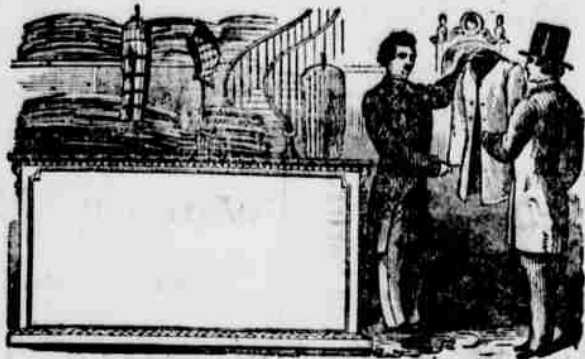


Jamestown Clothing House!
Lammers & Alden,
PETROLEUM CENTRE, PA.



READY-MADE AND CUSTOM CLOTHING!
Gent's Furnishing Goods, Hats & Caps.

Every Garment WARRANTED and Sold at HONEST PRICES!
LAMMERS & ALDEN.

The Greatest Improvement yet developed in
BASE BURNING STOVES,
Is now exhibited in the
ORIENTAL HOT BLAST!

NICHOLSON & BLACKMON, Ag'ts.
Among the most important improvements is the Ciphon flue burning the gas, and heating the base. The latter is a difficulty heretofore unsurmountable and all acquainted with base burning stoves cannot fail to acknowledge this "Eureka." We also have a full line of cheap

PARLOR STOVES,
and are prepared to meet all in price and quality, including six different patterns of **Cooking Stoves.**
The **DIKTATOR** we call special attention to, and we warrant every Stove. If not satisfactory return them.
sept-14.

MISCELLANEOUS.
Horse Shoeing, Horse Shoeing!
HORSE SHOEING!
Wagon Shop,
Wagon Shop,
Wagon Shop,
McCandlish & Stewart,
McCandlish & Stewart,
McCandlish & Stewart,
Opposite Petroleum House,
Washington-St.
THE BEST
HORSE SHOEING SHOP!
ON OIL CREEK.
Perfect Satisfaction Given in all Cases!
The work manufactured in our Shop cannot be surpassed for durability or finish, as it is made from the BEST HICKORY TIMBER
to the market, purchased especially for us in New York City, and we will warrant our work to be first-class in every respect. Give us a call!
McCandlish & Stewart,
Petroleum Centre, Pa., Aug. 2-11

C. H. WILLIAMS,
DEALER IN
COAL
OF ALL KINDS.
Office and Yard at end of Boyd Farm Bridge.
FREE PASSAGE TO TEAMS OVER THE BRIDGE.
C. H. WILLIAMS.

THE OIL MARKETS.
OFFICE OF PETROLEUM CENTRE DAILY RECORD, October 22, 1870.
The market continues firm with little change in figures. Sellers are more reluctant to sell and generally ask five cents above yesterday's prices. The sales were 1000 barrels gravity at \$3.20, which is mostly held at \$2.25, while regardless is held at \$3.15.

New York, Oct. 22
Crude, 113 1/4 @ 12.
Refined 24 1/4.
Nov., 24.
Market Quiet.

Philadelphia, Oct. 22.
Crude 10 3/4. bbls.
P. L. S. to W., 23 1/4. S. W. 24 1/4
Market—Quiet.

Pittsburg, Oct. 22.
Spot 9 1/4
Refined 20
Market—Quiet.

LIVERPOOL, Oct. 22.—12 p. m.
Refined 18 1/4. Spirits 12.
ANTWERP, Oct. 22.—3p. m.
Crude—No market.

GOLD IN NEW YORK.
NEW YORK, Oct. 22.
Gold—112 3/4.

Divine Service.
METHODIST EPISCOPAL CHURCH
Services every Sabbath at 11 A. M. and 7 1/2 P. M. Sabbath School at 12 1/2 P. M. gratis free. A cordial invitation extended to all.
Rev. P. W. SCOTFIELD, Pastor.

PRESBYTERIAN CHURCH
Preaching at 11 o'clock A. M., and 7 o'clock P. M.
D. PATTON, Pastor.

ST. PETERS AND PAUL'S (Catholic) CHURCH.
Mass at 10 1/4 a. m.
Vesper and Benediction of the Blessed Sacrament at 4 p. m.
Catechism at 2 p. m.
JAMES DUNN, Pastor.

DISSOLUTION NOTICE.
The co-partnership heretofore existing between John Moffitt & James Hays, under the firm name of Moffitt & Hays, producers of oil, is this day dissolved by mutual consent. John Moffitt retiring from the firm, James Hays paying all the liabilities of the late co-partnership.
JOHN MOFFITT,
JAMES HAYS
Byrd Farm, August 1, 1870.—Oct. 13.

Petroleum Centre Lodge, No. 715, I. O. of O. F.
Regular meeting nights Friday, at 7 1/2 o'clock. Signal.
J. MOREHEAD, N. G.
J. K. ELLIOTT, A. Sec'y.

RUSS & DAVIDSON,
Would invite their old patrons and the public generally
In Titusville and Vicinity,
To call and examine their splendid stock of
Furniture!
OF ALL KINDS
Parlor Suits, Chamber Sets,
Book Cases, Side Boards,
Lounges, Whatnots,
Hat Racks, Spring Beds,
Mattresses.

CARPETS, OIL CLOTHS, MIRRORS
And every description of Furniture, plain and ornamental.
UNDERTAKING!
all its branches. A large stock of
COFFINS AND METALLIC CASES
Now on hand. sept-14.

Petroleum Exchange Hotel
CHANGED HANDS.
FRESH ALL THE
OYSTERS! LUXURIES!
Received OF THE
DAILY! SEASON!
Washington Street,
Petroleum Centre, Pa., next door to Baum's Day Goods Store.
Day Boarders accommodated. Meals served at all hours. Oysters, and every description Game furnished guests.
No pains will be spared to accommodate those who favor us with their patronage.
ALFRED MYERS,
Petroleum Centre, August 22, '70 ff.

WAR DECLARED
On High Prices!
at the Old Stand of J. S. Prather, MAIN STREET, by the new firm,
M. V. B. FISHER,
Who intends keeping up a heavy stock of

GROCERIES & PROVISIONS
FLOUR, FRUIT, VEGETABLES,
and in fact every kind of goods usually kept in a well appointed
GROCERY STORE.
I have a team on the road and will deliver Goods FREE OF CHARGE.
Call! All I ask is a little trial and an examination of my stock. Give us a call.
M. V. B. FISHER
Petroleum Centre, Pa., July 22, '70

REMOVAL.

SANDERSON'S
WHOLESALE

Liquor Store

Has been removed to No. 20 Spring St,
AMERICAN HOUSE BLOCK.

A FULL ASSORTMENT OF FINE
Liquors and Cigars

READING ROOM

Has been fitted up in rear of the store, where my numerous friends and acquaintances are cordially invited to spend their leisure time while stopping in Titusville.

Remember in the American House Building is where you will find

ED. SANDERSON.
Titusville, Pa., Oct. 19, 1870, ff

T. M'Donald.

LIVERY, FEED & SALE STABLES!

At the Depot, opposite the Central House,

PETROLEUM CENTRE PA
The best stock of DRIVING AND SADDLE HORSES on the Creek, are to be found at
M'Donald's Livery.

REPAIRS & OUTTERS TO BE LET AT ALL TIMES.

FEED & BOARDED
on Reasonable Terms.

Training of all kinds attended to Promptly.

Give me a call.
T. M'DONALD
Petroleum Centre, Nov. 1870.

H. C. Jarvis,
Dealer in

CABINET FURNITURE!
A LARGE ASSORTMENT ALWAYS ON HAND.

LOOKING GLASSES in great variety. Looking Glass Plates replaced in old Frames.
Picture Frames made to order
Carpets, Oil Cloths, Wall Paper, Window Shades
A FINE STOCK.

UNDERTAKING,
COFFINS of all sizes on hand and trimmed to order on short notice.
SASH BLINDS AND DOORS
No. 106 WASHINGTON ST
Petroleum Centre Sept 1870-1870.

Philadelphia & Erie R. R.
SUMMER TIME TABLE

On and after Monday, May 30th, 1870, the trains on the Philadelphia & Erie Railroad will run as follows:

WESTWARD.		EASTWARD.	
Mail Train leaves Philadelphia,	10:20 p.m.	Mail train leaves Erie,	8:50 a.m.
" " leaves Corry,	6:30 p.m.	" " leaves Corry,	10:40 a.m.
" " arrives at Erie,	7:40 p.m.	" " arrives at Philadelphia,	6:20 a.m.
Erie Expt. leaves Philadelphia,	10:50 a.m.	Erie Expt. leaves Erie,	9:00 p.m.
" " leaves Corry,	5:50 a.m.	" " leaves Corry,	10:45 p.m.
" " arrives at Erie,	7:25 a.m.	" " arrives at Philadelphia,	5:3 p.m.
Warren Accommodation leaves Warren,	8:00 a.m.	Warren Accommodation leaves Erie,	4:00 p.m.
" " leaves Corry,	9:40 a.m.	" " leaves Corry,	5:55 p.m.
" " arrives at Erie,	11:30 a.m.	" " arrives at Warren,	7:20 p.m.

Express, Mail and Accommodation, East and West, connect at Corry, and all West bound trains and Mail and Accommodation East at Irwinton with Oil Creek and Allegheny River Railway.
W. M. A. BALDWIN, Gen'l Supt.

BUFFALO, CORRY AND PITTSBURGH RAILROAD.

NORTHWARD TRAINS.			
Express,	9:25 a.m.	Brocton,	1:03 p.m.
Mail,	11:25 a.m.	" "	5:30 "
Way Freight,	9:00 a.m.	" "	2:00 "
Accommodation,	3:35 p.m.	" "	10:30 "

WALL PAPER
at GRIFES BROS.

REWARD.—The largest variety of fine underclothing ever offered to their customers is now on exhibition at
oct5ff. LAMMERS & ALDEN.

Call and see the extension top Dictator with reservoir, at Nicholson & Blackmon's, agents for the same.
WALL PAPER

"POICKRY!"

Enumerating a few of the articles to be found at

L. M. STERNBURG'S

A FULL ASSORTMENT OF FINE
Lumber Yard

Washington-St., Petroleum Centre, Pa.

Friends and patrons, one and all. Your attention to my "biz" I would call;

Times are dull an' money tight, But in these times I'm looking for light;

To those who are building rigs without number, I would inform—this is the place to buy Lumber;

My motto is this: "Quick Sales and Small Profit," For business is healthy and I think much of it;

In quality my Lumber is second to none, And as for Shingles, I keep No. 1;

Some may not look at it in the light I do, And for close I have a quality No. 2;

And to those who are particular—as some may be, I still have another quality added No

I have good seasoned Lumber, Dressed up nice, Which I will sell at a low cash price;

Such as Flooring, Ceiling and Siding, both Rough and Dressed, Lath, Battens and Surfaced Lumber, all of the best;

I also have Rig Lumber of all kinds, At prices to compare with oil and hard times;

All kinds of Timber kept constantly on hand, And a box of Cigars of a very good brand;

My facilities for sailing are surely without number I always keep good teams to deliver good Lumber;

So if you want Lumber, Rough, Dressed, Soft or Hard, You will find just what you want at L. M. S's Lumber Yard.
febr14ff

Prussians in Front of Paris
Latest Telegrams

Inform the masses!
BRUCE & FULLER
HAVE A LARGE STOCK OF
BOOTS,

Men's, Boys and Youths.
Also an endless variety of
WOMEN'S, CHILDREN'S & MISSES' GO DS.
Of the best, that cannot fail to please. Our stock is new and stylish, and 20 per cent. lower than all other dealers.
Our custom department is presided over by a first class mechanic, who is unsurpassed for his size. Try him once and you are our customers.
Notice.—where our Store is, on Main Street, opposite the McClintock House, Petroleum Centre, Pa.
sept14ff.

NEW COAL YARD
At PETROLEUM CENTRE.

POTTER & CO.,
Dealers in

Anthracite, Bituminous and Blossburg Coal.

All sizes of the celebrated PITTSBURGH (ANTHRACITE) COAL, the best in market, constantly on hand and for sale by the ton or car load.
OFFICE AND YARD NEXT EAST OF STERNBURG & CO'S LUMBER YARD.

POTTER & CO.,
CORRY, PA.

Wholesale dealers and shippers of all kinds of Anthracite Coal. Dealers supplied in any quantity at short notice. 10,000 tons of coal in stock.
O. L. DAVIS, Agent.
Petroleum Centre, Pa., P. O. Box 248.
oct10ff.

FISHER & NORRIS,
GENERAL MACHINISTS

and Dealers in all kinds of
WELL TOOLS & FIXTURES
Necessary for putting down and operating Oil Wells. In connection with our MACHINE SHOP we have a large and convenient

BLACKSMITH SHOP.
Our facilities for MANUFACTURING and REPAIRING are equalled by any Shop in the Oil Region.
Shop—Main-st., opposite McClintock House