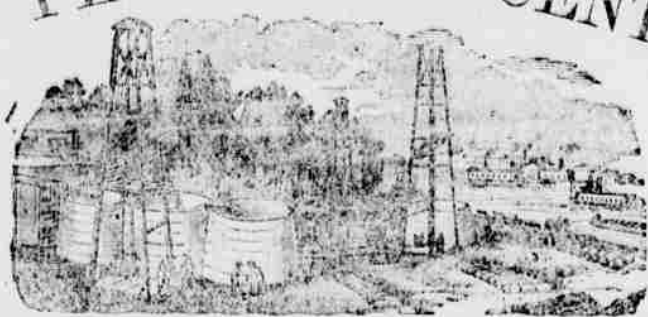


THE PETROLEUM CENTRE



DAILY RECORD

RECORD.

VOL IV—NO 201

PETROLEUM CENTRE, PA., SATURDAY EVENING OCTOBER 1 1870

25 CTS WEEKLY

THE PETROLEUM CENTRE DAILY RECORD

PUBLISHED EVERY EVENING,
(Sundays excepted.)
W. H. LONGWELL, Proprietor.

TERMS.

For year payable in advance, \$8 00
1 or month, 75

PRICE-LIST OF ADVERTISING.
(Ten lines of nonpareil make one square.)

No. Insertions.	1 sq.	2 sq.	3 sq.	1/2 cent.
One day,	\$ 75	\$1 00	\$1 50	\$4 00
Two days,	1 00	1 50	2 00	5 00
Three days,	1 50	2 00	2 50	6 50
Four days,	2 00	2 50	3 00	7 50
Five days,	2 50	3 00	3 50	8 50
One week,	2 50	3 50	4 50	8 50
Two weeks,	4 50	6 00	7 50	14 00
Three weeks,	6 00	8 00	10 00	16 00
One month,	7 00	10 00	12 00	20 00
Two months,	10 00	12 50	15 00	30 00
Three months,	12 00	15 00	18 00	40 00
Six months,	21 00	27 00	33 00	60 00
Nine months,	27 00	36 00	45 00	80 00
One year,	35 00	45 00	55 00	100 00

Special notices 20 cents per line, each insertion.
Advertisements payable quarterly in advance.

BUSINESS CARDS.

J. H. SUTHERLAND, M. D.
M. R. C. S.
Has permanently located at Petroleum Centre, for
the practice of his profession in all its branches.
OFFICE AT SIMMONS DRUG STORE,
Petroleum Centre, Pa. Feb 14/71.

Dr. L. H. CHRISTIE,
Has removed to his residence on
Main Street, at the end of Egbert
Farm Bridge.
Hours at residence from 8 P. M. until 8 A. M.
During remainder of the day he may be found at
his office over J. H. Christie's Drug Store. Nov 25

N. B. McALEY,
ATTORNEY-AT-LAW,
Pet. Centre, Venango Co., Pa.
Associated with F. D. Kinross, Esq., Franklin,
OFFICE—in room formerly occupied by J. G. El-
liott, Esq., in Brick Bank Building. Nov 15/70

BONHAM & SMITH,
ATTORNEYS & COUNSELORS-AT-LAW,
Office—High Street, Franklin, and Petroleum Cen-
tre, Pa. May 19/71.

V. McALPINE,
RESIDENT SURGEON DENTIST.
Gas administered. Office open day and night.
OFFICE—Berry's new Building, corner of Wash-
ington and Second sts., Petroleum Centre, Pa.
May 19/71

GEO. H. BISSELL & CO.,
BANKERS,
PETROLEUM CENTRE, PA.
G. H. Bissell, Christopher Meyer, M. C. Martin
We offer our services for the transaction of
GENERAL BANKING, EXCHANGES and COL-
LECTION BUSINESS.
Any business entrusted to our care will receive
prompt attention.

Philadelphia & Erie R. R.
SUMMER TIME TABLE
On and after Monday, May 30th, 1870, the trains
on the Philadelphia & Erie Railroad will run as
follows:
WESTWARD.
Mail Train leaves Philadelphia, 10:20 p.m.
" " leaves Corry, 6:00 p.m.
" " arrives at Erie, 7:45 a.m.
Erie Expr. leaves Philadelphia, 10:50 a.m.
" " leaves Corry, 5:50 a.m.
" " arrives at Erie, 7:25 a.m.
Warren Accommodation leaves Warren,
" " leaves Corry, 9:45 a.m.
" " arrives at Erie, 11:30 a.m.
EASTWARD.
Mail train leaves Erie, 8:50 a.m.
" " leaves Corry, 10:45 a.m.
" " arrives at Philadelphia, 6:30 p.m.
Erie Expr. leaves Erie, 9:00 p.m.
" " leaves Corry, 10:45 p.m.
" " arrives at Philadelphia, 6:30 p.m.
Warren Accommodation leaves Erie,
" " leaves Corry, 5:55 p.m.
" " arrives at Warren, 7:20 p.m.

**BUFFALO, CORRY AND
PITTSBURGH RAILROAD.**
NORTHWARD TRAINS.
Corry, Buffalo
Express, 9:25, a.m. 11:55, a.m. 1:50, p.m.
Mail, 11:55, a.m. 3:25, p.m. 5:30, " "
Way Freight, 9:00, a.m. 2:00, " "
Accommodation, 5:35, p.m. 8:30, a.m. 10:50, " "
SOUTHWARD TRAINS.
Buffalo, Corry.
M. Ex., 6:05, a.m. 8:55, a.m. 10:55, p.m.
Express, 11:50, a.m. 2:00, p.m. 5:30, p.m.
Accommodation 4:20, p.m. 7:15, " " 10:15, " "
Way Freight, 4:00, a.m. 7:35, a.m. 10:35, a.m.
Monday, May 30, 1870.

HOTELS.
ROCHESTER HOUSE,
Washington street, Petroleum Centre, Pa.
BRADSTREET & SILVERWOOD, Proprietors.
This House is centrally located, and the general
headquarters of oil men.
Petroleum Centre, Pa., May 19, 1868—et.

CENTRAL HOUSE,
PETROLEUM CENTRE, PA.
Near Oil Creek & Allegheny River Railway Depot
may 19/71 G. J. CROSS, Proprietor.

McCLINTOCK HOUSE,
PETROLEUM CENTRE, PA.
This popular Hotel, situated
Corner of Main & Washington-Sts.,
Near the Depot, has been refitted and furnished
throughout, and the proprietor will spare no pains
to make it a

FIRST-CLASS HOUSE,
OCT 14/71. HULBERT & FRANCIS Proprietors.

INTERNATIONAL HOTEL,
MILLER FARM, PA.
JOHN E. ROWE, Prop'r.
Good accommodations for transient customers.—
Day Board and Board with rooms on reasonable
terms. The proprietor will spare no pains to make
his House attractive to guests. June 2/71.

UNION HOTEL,
PLEASANTVILLE, PA.
This House having recently been enlarged and re-
fitted, I am now prepared to accommodate two
hundred guests comfortably.
Stages leave this House three times a day for Ti-
tusville. There is also a line of Stages to Phila-
delphia. THOS. MCKINNEY, Prop'r.

PETROLEUM HOUSE,
OIL CITY, PA.
Having recently taken possession of the above
House, we would most respectfully inform the trav-
eling public that we propose to "keep" a Hotel, and
to convince them of the fact, we invite all who wish
the comforts of a home, to call upon us. It will be
found

The Hotel of the Oil Regions.
Our Sample Room is supplied with the choicest
Wines, Liquors and Cigars, and our table will be
found laden with the very best the market affords.
There is connected with the House four first class
Billiard Tables Also, Barber Shop and Bath
Rooms. Give us a call, and convince yourselves of
the truthfulness of our assertion.

STATTS & MILES Prop'rs.
BROWN'S HOTEL,
AT MILLER FARM, PA.
Just opened. New and complete throughout.
Extra accommodations for transient and permanent
guests. J. O'NEIL, Proprietor. May 25/71.

**LAKE SHORE & MICHIGAN
SOUTHERN RAILWAY.**
FRANKLIN DIVISION,
Connecting trains at Jamestown and Oil City. On
and after Monday, August 8th, 1870, trains will run
as follows:
LEAVE OIL CITY.
MIXED TRAIN leaves Oil City 2:10 p.m.; Reno,
2:55 p.m.; Two Mile Run, 3:40 p.m.; Franklin, 4:25
p.m.; Summit, 5:10 p.m.; Waterloo, 5:55 p.m.;
Stonewall, 6:40 p.m.; Coal Branch, 7:25 p.m.;
Clark's Mills, 8:10 p.m.; Hadley's, 8:55 p.m.;
Salmon, 9:40 p.m.; A & G W Crossing, 10:25 p.m.;
Jamestown, 11:10 p.m.
MAIL leaves Oil City, 9:00 a.m.; Reno, 9:45 a.m.;
Two Mile Run, 10:30 a.m.; Franklin, 11:15 a.m.; Sum-
mit, 12:00 a.m.; Waterloo, 12:45 a.m.; Stonewall, 1:30
a.m.; Sandy Lake, 2:15 a.m.; Stonewall, 3:00 a.m.;
Coal Branch, 3:45 a.m.; Clark's Mills, 4:30 a.m.;
Hadley's, 5:15 a.m.; Salmon, 6:00 a.m.; A & G W
Crossing, 6:45 a.m.; at Jamestown, 7:30 a.m.
FRANKLIN ACCOMMODATION leaves Oil
City, 4:00 p.m.; Reno, 4:45 p.m.; Two Mile Run, 5:
25 p.m.; arrives at Franklin, 6:30 p.m.
ARRIVE AT OIL CITY.
MIXED TRAIN will leave Jamestown, 5:30 a.m.;
A & G W Crossing, 7:15 a.m.; Salmon, 7:50 a.m.; Had-
ley's, 8:35 a.m.; Clark's Mills, 9:20 a.m.; Coal Branch,
10:05 a.m.; Stonewall, 10:50 a.m.; Sandy Lake,
11:40 a.m.; Stonewall, 12:25 a.m.; Summit, 1:10 a.m.;
Waterloo, 1:55 a.m.; Hadley's, 2:40 a.m.;
Franklin, 3:25 a.m.; arrive at Oil City, 5:30 a.m.
FRANKLIN ACCOMMODATION leaves Frank-
lin, 8:00 a.m.; Two Mile Run, 8:45 a.m.; Reno, 9:30
a.m.; arrives at Oil City, 11:30 a.m.
Mail and west will stop at all stations except
Two Mile Run, Stonewall, Coal Branch, Clark's and
Salmon, and at these stations to leave passengers,
and on signal to take passengers.
Mixed trains will stop at all stations.
CHARLES F. HATCH, Gen. Supt.
GEO. H. McINTYRE, Supt.

Universal, Monitor and Sherman Wring-
ers, at Nicholson & Blackman's.

H. L. NUSE,
Dealers in
Fine Watches,
Diamond and Gold Jewelry,
Clocks,
Sterling Silver Ware,
Fire Arms, &c.
ALL KINDS OF SOLID JEWELRY MADE TO
ORDER.
Repairs, Engraving &c. will receive im-
mediate attention by expert workman.
NO. 10 SPRING STREET,
TITUSVILLE, PA. Oct 17

Oil City Advertisements.
Robson's Oil Creek Pipe Works
CHAR. ROBSON & CO.,
Corner of Seneca and Centre Sts., east side
of Oil Creek, Oil City, Pa.
Having added a powerful Steam Engine and three
large LATHES, to our already extensive Manu-
facturing Establishment, are now prepared to do all
the necessary work in fitting up, and repairing
ENGINES,
BOILERS,
IRON TANKS,
REFINING MACHINERY
COPPER WORMS AND STILL,
OIL WELL TOOLS AND FITTINGS,
In fact do all Machinery Job Work entrusted
with neatness and dispatch.

BOOTS & SHOES
The subscriber, thankful for the very liberal pat-
ronage heretofore extended to him, most re-
spectfully announces that he has on hand a large
assortment of

FIRST CLASS GOOD,
comprising all descriptions of
Boots & Shoes
LIGHT & FANCY BOOTS
And Shoes of every style, for
Men and Boys.

The Custom Department
RECEIVES SPECIAL ATTENTION
at the hands of conscientious workmen. Satisfaction
guaranteed in style and endurance.
Branch Store at Houseville.
G. MAGRANE
Next door to the Law Office, Washington
street, Petroleum Centre, Pa. Feb 19/71

OLD DR. KEATLEY'S many years' experi-
ence in curing the debilitated and disordered
disclosed the startling fact that three-fourths of
those suffering with Dyspepsia, Nervous Debility,
Exhausted Vitality, Consumption, General Affec-
tions, Diseases of the Liver, Epilepsy, Paralysis,
and Diseases of the Kidneys and Bladder, were
caused by and could only be cured after eating them.
of Small Portions. His immense practice has
made his treatment as near perfection as possible.
Many of his patients had paid from \$100 to \$500
for medicine and treatment before seeing him. No
better proof that patients cannot be cured without a
searching examination of all symptoms and complica-
tions, and scientific treatment by an experienced
physician. Those at a distance can be cured at their
homes without an interview. Advice free at 710
Broadway, New York. There are so many unsuccess-
ful physicians, Dr. Keatley will surely say he
is the author of two elaborate works on Medicine
and Surgery and one on Chemicals.

ALLEGHENY VALLEY R.R.
New line to Buffalo, through the Oil Regions.
JUNE 9, 1870.
GOING SOUTH.
Oil City, Pa. Kin. Parker's, at. Patten's
Mail, 5:00 a.m. 8:30 p.m. 12:30 p.m. 6:00 p.m.
Day Exp. 5:00 p.m. 2:30 p.m. 1:30 p.m. 8:30 p.m.
Night Ex. 9:20 p.m. 10:30 p.m. 1:00 a.m. 7:00 a.m.
GOING NORTH.
Pittsburg, Parkers, Franklin, at Oil City
Day Exp. 5:00 a.m. 11:30 a.m. 1:00 p.m. 2:30 p.m.
Way Exp. 9:30 a.m. 4:25 p.m. 6:30 p.m. 7:05 p.m.
Night Ex. 9:00 p.m. 4:30 a.m. 5:20 a.m. 6:30 a.m.
SILVER PALACE SLEEPING CARS on Night
Express-trains both ways between Pittsburg and
Corry.
J. J. LAWRENCE, Gen. Supt.
THOS. M. KING, Ass't Supt.

TITUSVILLE ADVERTISEMENT
FLETCHER'S
TITUSVILLE
DRESS GOODS
Hosiery, Gloves &
LINEN GOODS
White Goods
LACES
Embroideries
SHAWLS
Ribbons
NOTIONS
Domestic Goods
FLANNELS &
Blankets.

ROBSON'S
OIL CREEK PIPE WORKS.
CHARLES ROBSON & CO.,
Corner of Seneca & Centre Sts., East
side Oil Creek, Oil City, Pa.
Dealers in Morris, Tasker & Co's
OIL WELL TUBING AND CASING
ALSO,
WORKING BARRELS AND VALVES,
STUFFING BOXES,
CLAMPS, TONGS,
SUCKER RODS, &c
Machinery for Oil Wells & Refineries
BORING TOOLS, DRIVING PIPE,
OIL PUMPS, COLD WATER PUMPS
Every description of
SUPPLIES FOR OIL WELLS AND RE-
FINERIES,
ALSO, STOVES, TINWARE,
BRASS GOODS,
STEAM AND GAS FITTINGS,
BELTING, PACKING, and LUMBER,
HARDWARE, HOUSE TRIMMINGS,
Carpenters' Tools,
Rope, Oakum,
Nails, Axes, Coffee Mills,
Table & Pocket Cutlery;
A Full Assortment of Everything in the
HARDWARE LINE.

Champion Clothes Wringers
Manufacturers of
Tin, Sheet Iron and Copper Ware.
Repairing of all kinds done with neatness and
dispatch. Especial attention given to
STEAM AND GAS FITTING.
We have endeavored to merit the patronage of
the public, and shall use every exertion to merit it
continually.
Our facilities for furnishing everything to be
done, having been greatly increased, in the new build-
ing of our New Building, are now
SUPERIOR TO ANY OTHER ESTABLISHMENT
in the OIL REGION.

TAKE NOTICE.
NO FISHING TOOLS LENT AFTER
THIS DATE.
Responsible parties wishing to hire tools will be
accommodated at reasonable rates.
JOHN HOON & McCLARY
174 1/2

Codington & Cornwell,
Fine Assortment of
FANCY AND BLACK SILKS.
COAL DEALERS,
SUCCESSORS TO 'SEARLES & CORNWELL.'
At the Old Stand.

ISHAM & CO.,
Centre-St., Oil City.
NEW AND BEAUTIFUL
STYLES OF
Watches and Jewelry,
(American, English and Swiss make.)
Sterling Silver Ware,
Silver Plated Ware,
Of all grades, unique designs in SIL-
VER, especially adapted for presents
SOLD GOLD CHAINS,
JEWELRY,
REVOLVERS,
FISHING TACKLE,
SKAL RINGS, &c., &c.
Particular attention given to repair-
ing fine watches and jewelry by a
competent workman.
The firm have also a store at TI-
TUSVILLE, Spring street.
REMEMBER THE PLACE.
Centre street, next door west of the
P. & A. Telegraph Office, Oil City, Pa.
DIAMONDS
Elegant Jewelry.

PETROLEUM IRON WORKS,
Bryan, Dillingham & Co.,
Mechanists!
Iron and Brass Founders
FORGERS,
Manufacturers of
ENGINES, BOILERS, DRILLING
TOOLS, MULLAY AND SASH
SAW MILLS, PUMPING RIGS,
WALKING BEAM AND
HAND WHEEL IRONS, PLOWS,
AND ALL KINDS OF CASTINGS.
WHOLESALE & RETAIL DEALERS IN
ALLISON'S TUBING AND
CASING,
FOR OIL WELLS, &c.
Titusville, Nov. 23rd, 1869. 11.

To Milliners and Country Storekeeper
FALL TRADE
WHOLESALE DEPARTMENT,
UP STAIRS.
ESTIMABLE goods received daily from auction
and private sale. On stock of Centers, Flow-
ers, Satins, Silks, Velvets, Ribbons, Laces, Tric-
otings, Fringes, Yankee Notions, Fancy Goods,
&c. &c. in large and cheap. We cut lengths at
prices. Buy and sell for cash.
Edward Ridley & Son,
309, 311, & 311 1/2 Grand, and
66, 68 & 70 Allen Streets,
NEW YORK CITY.