

W. B. SIMMONS, DRUGGIST.

Is now offering the largest variety and most complete assortment of goods in this vicinity, comprising
DRUGS, MEDICINES, PAINTS, OILS, VARNISHES PAPER HANGINGS

Toilet Articles, Fancy Goods, Birds, Bird Cages, Stationery, Cigars, Lamps, Glass, Putty, etc. Your Patronage is respectfully solicited.

ERIE RAILWAY.
 1400 MILES UNDER ONE MANAGEMENT. 280 MILES WITHOUT CHANGE OF COACHES.
 The Broad Gauge, Double Track Route BETWEEN THE ATLANTIC CITIES AND THE WEST AND SOUTH-WEST.
 THIS RAILWAY EXTENDS FROM Cincinnati to New York 900 Miles, Cleveland to New York 625 Miles, Dunkirk to New York 460 Miles, Buffalo to New York 423 Miles, Rochester to New York 385 Miles, AND IS FROM 22 TO 27 MILES THE SHORTEST ROUTE AS IT IS.
 New and Improved Coaches are run from Cleveland, Dayton, Urbana, Marion, Galliton, Mansfield, Ashland, Akron, Cleveland, Warren, Sandusky, Dunkirk, Buffalo and Rochester to New York.
New York Without Change. ONLY ONE CHANGE TO BOSTON.
 On and after Monday, November 15, 1899, trains will leave Meadville at the following hours:
FRANKLIN BRANCH—Going South.
 LEAVE: Meadville, 5:45 A. M., 12:45 A. M., 1:30 P. M., 4:15 A. M.
 ARRIVE: Franklin, 7:45 " 1:30 " 2:00 " 7:05 " Oil City, 8:30 " 2:30 " 3:30 " 8:00 "
FRANKLIN BRANCH—Going North.
 LEAVE: Oil City, 4:15 A. M., 9:00 A. M., 4:15 P. M., 9:00 P. M., Franklin, 5:30 " 9:37 " 5:00 " 9:45 "
 ARRIVE: Meadville, 8:15 " 11:35 " 7:15 " 11:45 "
GOING WEST.
3:45 A. M. DAY EXPRESS, daily, Mondays excepted, for Cleveland, Cincinnati and the West and South. Connects at Cincinnati, Sundays excepted, for St. Louis, New Orleans and Pittsburgh; at Leavittsburg for Youngstown and Sharon; at Cleveland with Lake Shore Railway, for the West and North-West; at Ravenna, Sundays excepted, for Alliance and Pittsburg; at Akron, Sundays excepted, for Orrville and Millersburg; at Johnson with Pittsburgh, Cleveland and St. Louis Railway for Indianapolis, and at Cincinnati with the Ohio & Mississippi Railway, for St. Louis and the South and South-West. Sleeping Coaches are attached to this train at Hornellsville, running through to Cleveland without change.
9:45 A. M. EXPRESS MAIL, daily, Sundays excepted, for Cleveland and the West and North-West. Connects at Cleveland for Sharon, New Orleans and Pittsburgh, and at Cleveland with Lake Shore Railway for the West and North-West.
3:20 P. M. NIGHT EXPRESS, daily, for Cleveland, Cincinnati and the West and South. Connects at Leavittsburg, Sundays excepted, for Youngstown, at Cleveland with Lake Shore Railway, for the West and North-West, and at Johnson with Pittsburgh, Cleveland and St. Louis Railway for Indianapolis, and at Cincinnati with the Ohio & Mississippi Railway, for St. Louis and the South and South-West. A Sleeping Coach is attached to this train at New York, running through to Cincinnati.
11:30 A. M. ACCOMMODATION, Sundays excepted, for Leavittsburg and Way Stations, connecting for Youngstown.
3:30 P. M. FREIGHT ACCOMMODATION, daily.
1:15 A. M. WAY FREIGHT, Sundays excepted.
GOING EAST.
11:36 A. M. LIGHTNING EXPRESS, daily, connecting at Corry, Sundays excepted, for Warren, Pa., Mayville, Rochester and Buffalo, and daily for Bally, at Buffalo with Northern Central Railway or Williamsport, Harrisburg, Philadelphia and Baltimore and at New York for Boston and New England cities. A Sleeping Coach is attached to this train at Cincinnati running through to New York.
8:15 P. M. CINCINNATI EXPRESS, daily, Sundays excepted, connecting at Buffalo, for Albany and the celebrated summer resorts, Sharon Springs, and at New York for Boston, and all New England cities. A Sleeping Coach is attached to this train at Meadville running through to New York.
1:55 A. M. NEW YORK DAY EXPRESS, daily, Sundays excepted. Connects at Great Bend with Delaware, Lackawanna & Western Railway for Scranton, and at New York with daylight Express train of New Jersey Railroad for Philadelphia.
 A Sleeping Coach is attached to this train at Cleveland, running through to the classified sleeping coaches with train having new and improved Drawing Room Coaches attached, running through to New York.
2:45 P. M. ACCOMMODATION, Sundays excepted.
2:05 A. M. ACCOMMODATION, Sundays excepted.
3:50 A. M. WAY FREIGHT, Sundays excepted.
 Boston and New England Passengers, with their baggage, are transferred FREE OF CHARGE in New York.
 The best ventilated and most luxurious Sleeping Coaches **IN THE WORLD** accompany all night trains on this Railway.
 The Erie Railway Company has opened a new Ferry from their Jersey City Depot to the foot of 23d St., New York, thus enabling passengers to reach the upper portion of the city without the expense and annoyance of a street car or an omnibus transfer.
 The scenery along the entire route of the Erie Railway is of the most picturesque and beautiful character. Admiring the beauties, in a day's journey over this Line, will find its ever-changing landscapes subjects of continual admiration and interest.
Baggage Checked Through, And fare always as low as by any other Route.
ASK FOR TICKETS VIA ERIE RAILWAY, Which can be obtained at all the Principal Ticket Offices in the West and South-West.
L. D. RUCKER, Wm. B. BARR, Gen'l Pass'r Ag't. Jan 15, 1870.

GRIFFES BROS.
PURE DRUGS,
PATENT MEDICINES
 Toilet Articles,
 FANCY ARTICLES,
Perfumery,
Pomades,
 Paints, Oils, Dye Stuffs,
Fine Tobacco
& Cigars,
 Lamp Chimnies
Pure Wines & Liquors,
 &c.

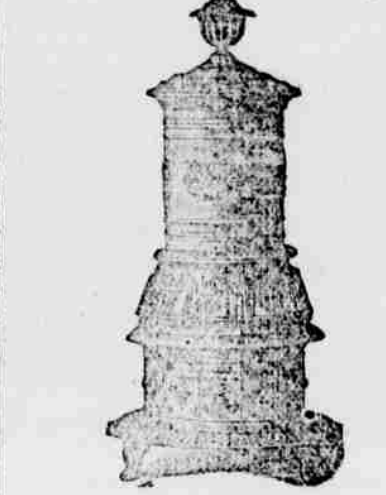
Particular attention paid to preparing Prescriptions.

ROBSON'S OIL CRACK PIPE WORKS.
CHARLES ROBSON & Co.,
 Corner of Seneca & Centre Sts., East side Oil Creek, Oil City, Pa.
 Dealers in Morris, Taylor & Co's
OIL WELL TUBING AND CASING.
 ALSO,
 WORKING BARRELS AND VALVES,
 STUFFING BOXES,
 CLAMPS, TONGS,
 SUCKER RODS, &c.
 Machinery for Oil Wells & Refineries
 BORING TOOLS, DRIVING PIPE,
 OIL PUMPS, COLD WATER PUMPS.
 Every description of
SUPPLIES FOR OIL WELLS AND REFINERIES.
 Also, STOVES, TINWARE,
 BRASS GOODS,
STEAM AND GAS FITTINGS,
 BELTING, PACKING, and LEAD;
 HARDWARE, HOUSE TRIMMING,
 Carpenters' Tools,
 Rope, Oakum,
 Nails, Axes, Coffee Mill,
 Tables & Pocket Cutlery;
 A Full Assortment of Everything in the
HARDWARE LINE.
 Also Forishing Goods,
 Lamps, Chimneys,
 No. 1 Winter Strained Lard Oil,
 No. 1 Redwood Oil,
 Suet Rods,
 Talcum & Soda Mat.

Champion Clothes Wringer
 Manufacturers of
Tin, Sheet Iron and Copper Ware.
 Repairing of all kinds done with neatness and dispatch. Special attention given to
STEAM AND GAS FITTING.
 We have endeavored to merit the patronage of the public, and shall use every exertion to merit it.
 Our facilities for furnishing everything in connection with the oil business, have been greatly increased, in the erection of our New Building, which is **SUPERIOR TO ANY OTHER ESTABLISHMENT IN THE OIL REGION.**

NO FISHING TOOLS LENT AFTER THIS DATE.
 Responsible parties wishing to hire fishing tools will be accommodated at reasonable rates.
 Feb 26th N. B. PARKER
 A. S. Smith's large stock of boots and shoes is offered at cost for the next 60 days Dec 8th.

TITUSVILLE ADVERTISEMENTS.
FLETCHER'S
TITUSVILLE.
 DRESS GOODS
 Hosiery & Gloves
LINEN GOODS
 White Goods
LACES
 Embroideries
SHAWLS
 Ribbons
NOTIONS
 Domestic Goods
FLANNELS & Blankets.



IMPROVED ORIENTAL!
 AND A GREAT VARIETY OF

COOKING AND HEATING STOVES
At AMES
 n. y. 26th. Opposite Post Office, Titusville.

PETROLEUM IRON WORKS
Bryan, Dillingham & Co.,
Machinists!
Iron and Brass Founders
FORGERS,
 Manufacturers of
ENGINES, BELERS, DRILLING TOOLS, MULLAY AND SASH SAW MILLS, PUMPING RIGS, WALKING BEAM AND BAND WHEEL IRONS, PLOWS, AND ALL KINDS OF CASTINGS, WHOLESALE & RETAIL DEALERS IN
ALLEN'S TUBING AND CASING,
 FOR OIL WELLS, &c.
 Titusville, Nov 25th, 1899. It.

J. A. PLANTE
French Boot Maker
 Washington Street,
PETROLEUM CENTRE, Pa.
 is manufacturing to order FIRST CLASS FINE BOOTS, such as
Patent Leather Boots,
Pump Sole Boots,
French Cork Sole Boots,
Scott. Welt Boots.
 HEAVY OR LIGHT WORK DONE IN FRENCH STYLE.
 Call and see sample.
J. A. PLANTE,
 Petroleum Centre, Pa., July 2-2m.

SPRAGUE & LONGWELL
 Dealers in

Steam Engines and Boilers
Agents for Chalmers-Spence Non-Conducting Compound
 For Covering Boilers and Steam Pipes.
Op. the Depot, TITUSVILLE, Pa.
 1816-17.

C. H. WILLIAMS,
 DEALER IN
COAL
 I HAVE opened a Coal Yard at the end of the Royal Farm Bridge, where will be constantly on hand all kinds of
STEAM AND STOVE COAL
 Teams coming to my yard for Coal, will have
Free Passage Over the Creek Bridge.
OPERATORS
 Would do well to enquire at the office, and find it to their advantage to deal with us.

The New York Meat Market
H. & W. PARKER have fitted up a new building on
On Main street, Opposite the Meadlock House.
 And intend keeping what Petroleum Centre only needed, a first-class Meat Market. **CHOICEST AND BEST MEAT** will be kept. It will be our aim to serve our customers with promptness and to their entire satisfaction.
 Sept 1897. H. & W. PARKER

ERIE CITY IRON WORKS
ERIE, PA.,
 MANUFACTURERS OF
STEAM ENGINES AND BOILERS
WELL RIGS & DRIVING PIPE.
 We have this day appointed C. A. MEYER, of Petroleum Centre, sole agent of our manufactures for Petroleum Centre and Oil City. All orders addressed to him, or to ERIE CITY IRON WORKS, will receive prompt attention.
 Titusville, Pa., April 8, 1898-19.

FISHER & NORRIS,
GENERAL MACHINISTS
 and Dealers in all kinds of
WELL TOOLS & FIXTURES
 Necessary for putting down and operating oil wells. In connection with our MACHINE SHOP we have large and convenient
BLACKSMITH SHOP.
 Our facilities for MANUFACTURING are not equalled by any Shop in the Oil Region.
 Shop—Main-st., opposite Meadlock House.
 May 27th F. FISHER & NORRIS
BUFFALO AND ERIE RAILROAD
 On and after Monday, Nov. 20th, 1899, Passenger Trains will run on this road as follows:
LEAVE ERIE—GOING EAST.
1:40 A. M. NIGHT EXPRESS, stopping at Bally, Westfield, Dunkirk and Silvercreek, arriving at Buffalo at 4:45 A. M.
10:55 A. M. NEW YORK EXPRESS, stopping at Westfield, Brocton, Dunkirk, Silvercreek, and Angola, arriving at Buffalo at 2:10 P. M.
7:35 P. M. CINCINNATI EXPRESS, stopping at Westfield, Silvercreek, and Dunkirk, arriving at Buffalo at 10:45 P. M.
6:00 A. M. MAIL AND ACCOMMODATION, stopping at all stations, arriving at Erie at 10:45 A. M.
3:45 P. M. DAY EXPRESS, stopping at Westfield, Silvercreek and Angola, arriving at Buffalo at 7:30 P. M.
LEAVE BUFFALO—GOING WEST.
12:25 P. M. DAY EXPRESS, stopping at Westfield, Silvercreek, Dunkirk, Brocton, and Angola, arriving at Erie at 3:35 P. M.
4:30 P. M. MAIL AND ACCOMMODATION, stopping at all stations, arriving at Erie at 8:20 P. M.
6:30 A. M. TORONTO EXPRESS, stopping at all stations, and arriving at Erie at 10:45 A. M.
9:00 P. M. STEAMBOAT EXPRESS, stopping at Angola, Silvercreek, Dunkirk, Brocton, Westfield and Northeast, arriving at Erie at 1:30 A. M.
1:20 A. M. NIGHT EXPRESS, stopping at Silvercreek, Dunkirk and Westfield, arriving at Erie at 4:40 A. M.
 Railroad time is 10 minutes faster than Erie & N. B. BROWN, Gen'l Supt.