

W. B. SIMMONS, DRUGGIST,

Is now offering the largest variety and most complete assortment of goods in this vicinity, comprising DRUGS, MEDICINES, PAINTS, OILS, VARNISHES, PAPER HANGINGS

Toilet Articles, Fancy Goods, Birds, Bird Cages, Stationery, Cigars, Lamps, Glass, Putty, etc. Your Patronage is respectfully solicited.

ERIE RAILWAY.
 1400 MILES UNDER ONE MANAGEMENT. 800 MILES WITHOUT CHANGE OF COACHES.
The Broad Gauge, Double Track Route BETWEEN THE ATLANTIC CITIES AND THE WEST AND SOUTH-WEST.
 THIS RAILWAY EXTENDS FROM Cincinnati to New York 800 Miles, Cleveland to New York 625 Miles, Dunkirk to New York 400 Miles, Buffalo to New York 423 Miles, Rochester to New York 385 Miles, AND IS FROM 22 TO 27 MILES THE SHORTEST ROUTE.
 New and Improved Coaches are run from Cincinnati, Dayton, Urbana, Marion, Gallipolis, Mansfield, Ashland, Akron, Cleveland, Warren, Meadville, Dunkirk, Buffalo and Rochester to New York Without Change. ONLY ONE CHANGE TO BOSTON.
 On and after Monday, November 15, 1899, trains will leave Meadville at the following hours, viz:
FRANKLIN BRANCH--Going South.
 LEAVE: Meadville, 5.45 A. M., 12.45 A. M., 1.30 P. M., 4.15 A. M.
 ARRIVE: Franklin, 7.45 " 1.30 " 2.05 " 7.55 " Oil City, 8.30 " 2.30 " 3.35 " 8.00 "
FRANKLIN BRANCH--Going North.
 LEAVE: Oil City, 4.15 A. M., 9.00 A. M., 4.15 P. M., 9.00 P. M. Franklin, 5.20 " 9.37 " 9.50 " 9.45 "
 ARRIVE: Meadville, 8.15 " 11.35 " 7.15 " 11.45 "
GOING WEST.
3.45 A. M. DAY EXPRESS, daily, Mondays excepted, for Cleveland, Cincinnati and the West and South. Connects at Clevelandsville, Sundays excepted, for Sharon, Newcastle and Pittsburgh; at Leavittsburg for Youngstown and Sharon; at Cleveland with Lake Shore Railway, for the West and North-West; at Havana, Sundays excepted, for Alliance and Pittsburgh; at Akron, Sundays excepted, for Greenville and all eastward; at Urbana with Pittsburgh, Cincinnati and St. Louis Railway for Indianapolis, and at Cincinnati with the Ohio & Mississippi Railway, for St. Louis and the South and South-West. Sleeping Coaches are attached to this train at Hornellsville, running through to Cleveland without change.
9.45 A. M. EXPRESS MAIL, daily, Sundays excepted, for Cleveland and the West and North-West. Connects at Clevelandsville for Sharon, Newcastle and Pittsburgh, and at Cleveland with Lake Shore Railway for the West and North-West.
3.20 P. M. NIGHT EXPRESS, daily, for Cleveland, Cincinnati and the West and South. Connects at Leavittsburg, Sundays excepted, for Youngstown at Cleveland with Lake Shore Railway, for the West and North-West; at Cincinnati with the Ohio & Mississippi Railway for St. Louis and the South and South-West. A Sleeping Coach is attached to this train at New York, running through to Cincinnati.
11.30 A. M. ACCOMMODATION, Sundays excepted, for Leavittsburg and Way Stations, connecting for Youngstown.
3.20 P. M. FREIGHT & ACCOMMODATION, daily.
7.15 A. M. WAY FREIGHT, Sundays excepted.
GOING EAST.
11.30 A. M. LIGHTNING EXPRESS, daily, connecting at Corry, Sundays excepted, for Warren, Pa., Mayville, Brecon and Titusville, and Jody or Erie; at Alliance with Northern Central Railway or Williamsport; at Leavittsburg, Philadelphia and Baltimore and at New York for Boston and New England, etc.
 A Sleeping Coach is attached to this train at Cincinnati running through to New York.
8.15 P. M. CINCINNATI EXPRESS, daily, Sundays excepted, connecting at Highampton for Akron and the West and South, Sharon Springs, and at New York for Boston, and all New England cities. A Sleeping Coach is attached to this train at Meadville running through to New York.
1.55 A. M. NEW YORK DAY EXPRESS, daily, Sundays excepted. Connects at Great Bend with Delaware, Lehigh Valley & Western Railway for Scranton, and at New York with Midland Express train of New Jersey Railroad for Philadelphia.
 A Sleeping Coach is attached to this train at Cleveland, running through to New York, connecting with train having new improved Drawn Roof Coaches attached, running through to New York.
2.45 P. M. ACCOMMODATION, Sundays excepted.
2.05 A. M. ACCOMMODATION, Sundays excepted.
4.50 A. M. WAY FREIGHT, Sundays excepted.
 Boston and New England Passengers, with their baggage, are transferred FREE OF CHARGE in New York.
 The best ventilated and most luxurious Sleeping coaches **GO IN THE WORLD** accompany all night trains on this Railway.
 The Erie Railway Company has opened a new Ferry from their Jersey City Depot to the foot of 2nd St., New York, thus enabling passengers to reach the upper portion of the city without the expense and annoyance of a street car or an omnibus transfer.
 The scenery along the entire route of the Erie Railway is of the most picturesque and beautiful character. Admirers of Nature's beauties, in a daylight journey over this Line, will find its ever-changing landscape subjects of continual admiration and interest.
Baggage Checked Through, And fare always as low as by any other Route.
ASK FOR TICKETS VIA ERIE RAILWAY, Which can be obtained at all the Principal Ticket Offices in the West and South-West.
L. D. RUCKER, Gen'l Sup't.
W. M. BARR, Gen'l Pass'r Ag't.
 Jan 15, 1899.

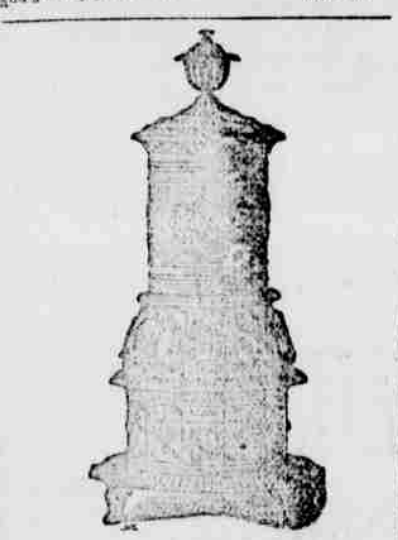
GRIFFES BROS.
PURE DRUGS, PATENT MEDICINES
 Toilet Articles,
 FANCY ARTICLES,
 Perfumery,
 Pomades,
 Paints, Oils, Dye Stuffs,
 Fine Tobacco & Cigars,
 Lamp Chimnies
 Pure Wines & Liquors,
 &c.

Particular attention paid to preparing Prescriptions.

ROBSON'S OIL CRACK PIPE WORKS.
CHARLES ROBSON & Co.
 Corner of Seneca & Centre Sts., East side Oil Creek, Oil City, Pa.
 Dealers in Norris, Tucker & Co's
OIL WELL TUBING AND CASINGS
 ALSO,
WORKING BARRELS AND VALVES, STUFFING BOXES, CLAMPS, TONGS, SUGGER RODS, &c
Machinery for Oil Wells & Refineries
BOILING TOOLS, DRIVING PIPE, COLD WATER PUMPS & OIL PUMPS.
 Every description of
SUPPLIES FOR OIL WELLS AND REFINERIES,
 Also, **STOVES, TINWARE, BRASS GOODS, STEAM AND GAS FITTINGS, BELTING, PACKING, and HOV &c**
HARDWARE, HOUSE TRIMMING, Carpenters' Tools, Rope, Oakum, Nails, Axes, Coffee Mill, Table & Pocket Cutlery;
 A Full Assortment of Everything in the
HARDWARE LINE.
 House Furnishing Goods, Lamps, Chimneys, No. 1 Winter Strained Lard Oil, No. 1 Refined Oil, Stair Rods, Table and Dining Mats

Champion Clothes Wringers
 Manufacturers of
Tin, Sheet Iron and Copper Ware.
 Repairing of all kinds done with neatness and dispatch. Especial attention given to
STEAM AND GAS FITTING.
 We have endeavored to merit the patronage of the public, and shall use every exertion to merit it.
 Our facilities for furnishing or repairing in our line, having been greatly increased, in the erection of our New Building, are now SUPERIOR TO ANY OTHER ESTABLISHMENT IN THE OIL REGION.
NO FISHING TOOLS LENT AFTER THIS DATE.
 Responsible parties wishing to hire fishing tools will be accommodated at reasonable rates.
 Feb 8-9m N. B. PARKER
 A. S. Smith's large stock of boots and shoes is offered at cost for the next 60 days
 Dec 5 1/2.

TITUSVILLE ADVERTISEMENTS.
McEwen & Co
 (Corner Spring and Monroe Streets.)
TITUSVILLE
 WOULD call the attention of Grocery Dealers of the Oil Region to the fact that they established for the accommodation of the
A strictly Wholesale Grocery House
 The only one of the kind in the Oil Region. We have seen the necessity of such an establishment of a long time. The
Retail Dealers
 who pays his taxes and licenses and ventures his capital in his business,
Should Be Protected.
 In it. We propose to do it by
Selling to Dealers Only.
 We have in stock
LARGE AND CAREFULLY SELECTED STOCK,
 comprising everything that is required,
FIRST - CLASS STORE.
 Which we offer at prices that will
Compete with any Market in the Country.
 We cordially invite an examination of our goods and a strictly professional
 sept 1899



IMPROVED ORIENTAL
 AND A GREAT VARIETY OF
COOKING AND HEATING STOVES
At AMES
 n. y. 60 m. Opposite Post Office, Titusville.
H. L. NUSE,
 Dealer in
Fine Watches, Diamond and Gold Jewelry,
 Clocks, Sterling Silver Ware, Fire Arms, &c.
 ALL KINDS OF SOLID JEWELRY MADE TO ORDER.
 Repairing, Engraving, &c., will receive in due season and in best workman
NO. 10 SPRING STREET,
 TITUSVILLE, PA. Dec 2.

Daily Record
 NEWSPAPER,
BOOK
 AND
JOB PRINTING
 Office;
MAIN STREET,
PETROLEUM CENTRE.
H. LONGWELL, P. O.
 from New York, Philadelphia, and Pittsburgh, which together with Editorials and Local matters, make it one of the most desirable newspapers published in the Oil Region. As an
Advertising Medium,

The RECORD has no superior, as it circulates wherever an Oil Operator or Dealer can be found.
 We have a large and well-selected assortment of **Jobbing Material**, embracing the very latest styles. We are therefore, enabled to execute Job Work of every variety in a satisfactory manner when desired, jobs will be neatly printed in Colors
Shipping Bills,
Poster
Hand-Bills.
Programmes,
Bills of Fare.
Labels.
 — AND —
Business and Visiting Cards,
LETTER-HEADS,
BILL-HEADS,
BILLS OF LADING, Etc., Etc
 — ALSO —
BALL PRINTING,
 in or Fancy Styles, neatly and promptly executed, embracing
CIRCULARS, PROGRAMMES, CARDS, TICKETS, Etc.
 act, every variety a style of work in letter press printing.
 Merchants, Lawyers, Justices of the Peace, Land Agents, Oil Dealers and Agents, Insurance Agents, Expressmen and other parties in want, are informed BLANKS business or legal, required in this community. Jobbing patronage respectfully solicited.
W. H. LONGWELL