

THE PETROLEUM CENTRE

DAILY RECORD.



V. L. IV—NO. 30 PETROLEUM CENTRE, PA. TUESDAY EVENING, FEBRUARY 8 1870 25 CTS WEEKLY

THE PETROLEUM CENTRE
DAILY RECORD.
PUBLISHED EVERY EVENING,
(Sundays excepted.)
W. B. LONGWELL, Proprietor.

TERMS.
For year payable in advance, \$5 00
For month, 50
PRICE-LIST OF ADVERTISING.
(Ten lines of nonpareil make one square.)

No. insertions	1 sq.	2 sq.	3 sq.	4 sq.
One day	\$ 75	\$1 00	\$1 50	\$2 00
Two days	1 00	1 50	2 00	2 50
Three days	1 50	2 00	2 50	3 00
Four days	2 00	2 50	3 00	3 50
Five days	2 50	3 00	3 50	4 00
One week	4 00	5 00	6 00	7 00
Two weeks	6 00	7 00	8 00	9 00
Three weeks	7 00	8 00	9 00	10 00
One month	10 00	12 00	15 00	20 00
Two months	18 00	22 00	28 00	35 00
Three months	25 00	30 00	38 00	45 00
Six months	45 00	55 00	70 00	85 00
Nine months	60 00	75 00	95 00	110 00
One year	100 00	120 00	150 00	180 00

Special notices 50 cents per line, each insertion.
Advertisements payable quarterly in advance.

BUSINESS CARDS.
N. H. SMILEY,
ATTORNEY-AT-LAW,
Petroleum Centre, Venango Co., Pa.

Associated with F. D. Kinross, Esq., Franklin, Pa.
OFFICE—In room formerly occupied by J. G. Elliott, Rev. in Brick Bank Building, Nov 15-17

H. POND, M. D.,
HOMEOPATHIC PHYSICIAN, has removed his office and residence to Egbert farm, four miles from the bridge on right hand side of the road, where he is prepared to attend all calls promptly.
Nov 17

Dr. T. M. STUART,
PHYSICIAN AND SURGEON.

OFFICE over Sobel's dry goods store, next to the Opera House Pet. Centre, Pa. Jan. 10-17

ALBERT S. MAVER,
ATTORNEY & COUNSELOR-AT-LAW,
OFFICE in the Rochester House Building, on Washington and Main streets,
PETROLEUM CENTRE, PENNA.
May 10, 1869.—17

MUNSHAM & SMITH,
ATTORNEYS & COUNSELORS-AT-LAW,
Office—High Street, Franklin, and Petroleum Centre, Pa.
May 19-17

V. MCALPINE,
RESIDENT SURGEON DENTIST.

OFFICE—Berry's new Building, corner of Washington and Second sts., Petroleum Centre, Pa. May 19-17

GEO. H. BISSELL & CO.,
BANKERS,
PETROLEUM CENTRE, PA.
G. H. Bissell, M. C. Hartig, Christopher Meyer.

We offer our services for the transaction of a GENERAL BANKING, EXCHANGE and COLLECTION BUSINESS.
Any business entrusted to our care will receive prompt attention.
July 17

C. H. WILLIAMS,
DEALER IN
COAL!

I HAVE opened a Coal Yard at the end of the Boyd Farm Bridge, where will be constantly kept all kinds of

STEAM AND STOVE COAL.
Teams coming to my yard for Coal, will have

Free Passage over the Creek Bridge.
OPERATORS
We will do well to enquire at the office, and will find it to their advantage to deal with us.
retro in Co.

C. A. DUFFY,
DEALER IN SECOND HAND ENGINES, BOILERS, Tubing, Castings, also new Wood & Iron engines so early on hand. Having the facilities for

CLEANING AND REPAIRING ENGINES.
Will do upon the most reasonable terms.
Articles Having Engines for Sale

Will do well to give me a call. Place in near the O. C. & A. R. R.
PETROLEUM CENTRE, PA

HOTELS.

SMUGHERY HOUSE.
Proprietor.
The largest and most commodious Hotel in the oil region. Fair on the Bridge removed to boarders. This house is pleasantly situated, rooms cool and pleasant, making it a delightful hotel in all respects.
Petroleum Centre, April 10, 1869

ROCHESTER HOUSE,
Washington street, Petroleum Centre, Pa. BRADSTREET & SHIRWOOD, Proprietors.
This House is centrally located, and the general headquarters of oil men.
Petroleum Centre, Pa. May 19, 1869-17

CENTRAL HOUSE,
PETROLEUM CENTRE, PA.,
Near Oil Creek & Allegheny River Railway Depot.
may 19-17. G. J. CROSS, Proprietor.

MCCLINTOCK HOUSE,
PETROLEUM CENTRE, PA.
This popular Hotel, situated at
Corner of Main & Washington-Sts.,
Near the Depot, has been refitted and furnished throughout, and the proprietor will spare no pains to make it a

FIRST-CLASS HOUSE.
oct 17 G. GRISWOLD, Proprietor.

AMERICAN HOTEL,
PETROLEUM CENTRE, PA.
J. R. BARNES, Proprietor.
This House is in a pleasant locality, and but a short walk from the Depot. The rooms are large and comfortable, and the table supplied with the delicacies of the season.
J. R. BARNES.
July 20-17

INTERNATIONAL HOTEL,
MILLER FARM, PA.
JOHN E. ROWE, Proprietor.
Good accommodations for transient customers. Day Board and Board with rooms on reasonable terms. The proprietor will spare no pains to make his Home attractive to guests.
June 17

UNION HOTEL,
PLEASANTVILLE, PA.
This House having recently been enlarged and refitted, I am now prepared to accommodate 120-150 guests comfortably.
Stages leave this house three times a day for the west. There is also a line of Stages to Oil Creek.
June 17 THOS. MCKINNEY, Proprietor.

PETROLEUM HOUSE,
OIL CITY, PA.
Having recently taken possession of the above House, we would most respectfully inform the traveling public that we propose to "keep a hotel," and to convince them of the act, we invite all who wish the comforts of a home, to call upon us. It will be found

The Hotel of the Oil Regions.
Our Sample Room is supplied with the choicest Wines, Liquors and Cigars, and our table will be found laden with the very best the market affords. There is connected with the House four first class Billiard Tables, also, Barb. r. Shop and Bath Rooms. Give us a call, and convince yourselves of the truthfulness of our assertion.
oct 17 JAMES G. WHITE.

Coal! Coal! Coal!
I, the undersigned, having established a branch Yard at Boyd Farm, are now prepared to furnish

All Grades of Coal
At the Very Lowest Prices.
Operators from Cherry Tree Hill, and vicinity, living at Petroleum Centre, can leave their orders at our office here, and have them promptly filled from the Boyd Farm Yard.

AT LESS COST THAN USUAL.
DON'T FORGET THE PLACE
SEARLES & CORNWELL,
Office on O. C. & A. R. R., Petroleum Centre.
Branch Office at Boyd Farm.

N. B.—We hold exclusive control of the famous STONEBORO COAL.
at both the above named points.
June 17

S. S. Griswold,
Dealer in

COAL.
Orders by the Car or Ton promptly filled.

Also, Agent for the celebrated
KEEL RIDGE COAL!

OFFICE on Second Street, near R. R. Track
PETROLEUM CENTRE, PA
June 17

Drilling Jars

We would respectfully announce to our customers and the public generally that we accept our usual course.

Cast Steel Drilling Jars!
Which for Strength and Durability exceed any Steel-lined Jar heretofore in use.

The Advantages we Claim
over Lead Jars are that, being ALL STEEL, they are stronger than Jars composed partly of Iron, thus presenting a Steel surface to the rock, they are resistant from wear on the outside, and will keep their shape longer.

We Warrant Them to Drill Fifteen Hundred Feet.
We also keep on hand

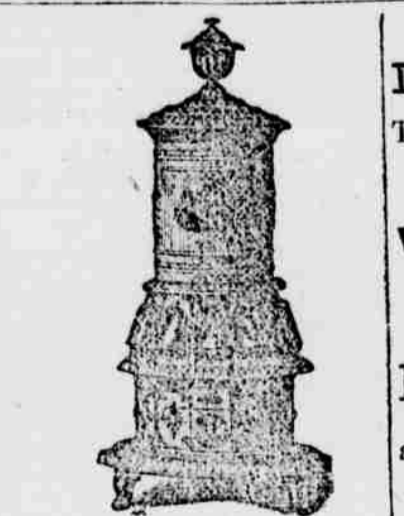
Cast Iron Working Barrels.
Fisher, Norris & Co.,
PETROLEUM CENTRE,
Nov 17th, 1869-17

TO THE WORKING CLASS— We are now prepared to furnish all classes with constant employment at home, the whole of the three night shift, or any other shift, for a weekly salary from \$2 to \$3. Persons of either sex, and of any age, may apply to us, and we will send them a copy of our circular, and a list of the names of the persons who are already employed. Full particulars, a valuable sample book, and a list of the names of the persons who are already employed, will be sent to you on application. If you wish to be employed, please send your name and address to E. C. ALLEN & CO., A. G. Smith, Franklin, Pa.

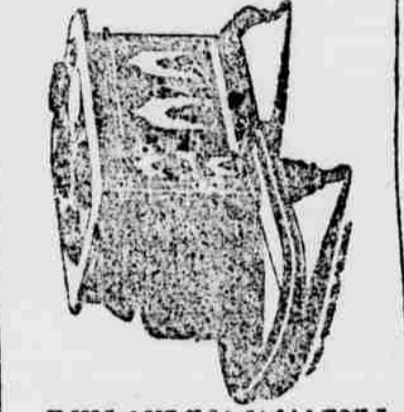
FRANKLIN, PA., INSURANCE AGENT.
I. H. HILLIARD, Agent.
\$50,000,000 CAPITAL.
Represented by the following companies:
The Mutual Life Insurance Co. of N. York, capital \$27,000,000
The State Life Insurance Co. of Hartford Conn. capital 5,500,000
The Home Insurance Co. of New York, 2,000,000
The Insurance Co. of North America, 2,000,000
The Home of New Haven, Conn. capital 1,500,000
The Albany Life Insurance Co. of Albany, New York, capital 500,000
The American Life Insurance Co. of Philadelphia, capital 500,000
This Agency is among the oldest agencies in the State of Penn. stands west of Philadelphia. Has paid dividends for the last four years over \$300,000 in losses.
Good Dwelling Houses, Churches, School Houses and other buildings
Insured Perpetually.
Oil insured in Store and in Transit. Policies issued on short notice, in any of the above. For further particulars, Office in Franklin, Pa.
Nov 17-17

PETROLEUM IRON WORKS
Is van, Dillingham & Co.,
Machinists!
Iron and Brass Founders
FORGERS,
Manufacturers of
ENGINES, BOILERS, DRILLING TOOLS, WELLY AND SASH SAW MILLS, PUMPING RIGS, WALKING BEAM AND BAND WHEEL IRONS, PLOWS, AND ALL KINDS OF CASTINGS.
WHOLESALE & RETAIL DEALERS IN
ALLESON'S TUBING AND CASING,
FOR OIL WELLS, &C.
Titusville, Nov 24th, 1869-17

OUR STORES AND OIL CLOSING
JUST RECEIVED, some beautiful, at
THE FURNITURE STORE
THE DAILY RECORD, to the best advantage, and at the lowest price.



IMPROVED ORIENTAL
AND A GREAT VARIETY OF



KING AND PATENTIVE
At AMES'

John C. Welch,
Seneca-St., Oil City, Pa.,
Dealer in

Gibbs, Russell & Co's Boring and Fishing Tools,
Inn's Sucker Rods,
Driving Pipe, Derrick Irons, Grate Bars,
Balance Wheels & Pulleys,
all sizes.
My connection with Mendville and Pittsburgh companies is such that I can get out all kinds of Castings at short order.
JOHN C. WELCH.
Oil City, Feb. 17, 1869-17

H. C. Jarvis,
Dealer in

CABINET FURNITURE!
A LARGE ASSORTMENT ALWAYS ON HAND.
LOOKING GLASSES in great variety. Looking Glass Plates replaced in old Frames.
Picture Frames made to order
Carpets, Oil Cloths, Wall Paper, Window Shades,
A FINE STOCK.
UNDERTAKING,
COFFINS of all sizes on hand and trimmed to order on short notice.
SASH BLINDS AND DOORS
No. 106 WASHINGTON-ST.
Petroleum Centre, Oct 11-17-15.

FURNITURE
RUSS & DAVIDSON,
35 Diamond St.,
TITUSVILLE, PA.
(Opposite Herald Office)
Would invite old patrons and the public generally to call and examine our

SALENDIA STOCK OF
FURNITURE OF ALL KINDS.
Parlor Sets, Chamber Sets, Bed Cases, Sideboards, Larders, Carpets, Mirrors, and every description of furniture, plates and glassware. Terms reasonable.

RUSS & DAVIDSON,
35 Diamond St.,
TITUSVILLE, PA.
(Opposite Herald Office)
Would invite old patrons and the public generally to call and examine our

SALENDIA STOCK OF
FURNITURE OF ALL KINDS.
Parlor Sets, Chamber Sets, Bed Cases, Sideboards, Larders, Carpets, Mirrors, and every description of furniture, plates and glassware. Terms reasonable.

RUSS & DAVIDSON,
35 Diamond St.,
TITUSVILLE, PA.
(Opposite Herald Office)
Would invite old patrons and the public generally to call and examine our

SALENDIA STOCK OF
FURNITURE OF ALL KINDS.
Parlor Sets, Chamber Sets, Bed Cases, Sideboards, Larders, Carpets, Mirrors, and every description of furniture, plates and glassware. Terms reasonable.

RUSS & DAVIDSON,
35 Diamond St.,
TITUSVILLE, PA.
(Opposite Herald Office)
Would invite old patrons and the public generally to call and examine our

SALENDIA STOCK OF
FURNITURE OF ALL KINDS.
Parlor Sets, Chamber Sets, Bed Cases, Sideboards, Larders, Carpets, Mirrors, and every description of furniture, plates and glassware. Terms reasonable.

RUSS & DAVIDSON,
35 Diamond St.,
TITUSVILLE, PA.
(Opposite Herald Office)
Would invite old patrons and the public generally to call and examine our

SALENDIA STOCK OF
FURNITURE OF ALL KINDS.
Parlor Sets, Chamber Sets, Bed Cases, Sideboards, Larders, Carpets, Mirrors, and every description of furniture, plates and glassware. Terms reasonable.

Pioneer LIQUOR STORE.

The subscribers, having purchased the stand of M. Money,

WASHINGTON STREET
Petroleum Centre, Pa.,
HAS OPENED A

Branch Liquor Store
and will continue to keep constantly on hand a full supply of

PURE LIQUORS,
OF ALL KINDS.

J. & M. BARRETT,
Petroleum Centre, Nov. 18th, 1869-17

PIPE CUTTING TIN WARE.

DEALERS IN
NICHOLSON & BLACKMON,
[Successors to Jas. A. Scribner]

GENERAL HARDWARE,
AND WELLS SUPPLIES.

PIPE CUTTING TIN WARE.

RUSS & DAVIDSON,
35 Diamond St.,
TITUSVILLE, PA.
(Opposite Herald Office)
Would invite old patrons and the public generally to call and examine our

SALENDIA STOCK OF
FURNITURE OF ALL KINDS.
Parlor Sets, Chamber Sets, Bed Cases, Sideboards, Larders, Carpets, Mirrors, and every description of furniture, plates and glassware. Terms reasonable.

RUSS & DAVIDSON,
35 Diamond St.,
TITUSVILLE, PA.
(Opposite Herald Office)
Would invite old patrons and the public generally to call and examine our

SALENDIA STOCK OF
FURNITURE OF ALL KINDS.
Parlor Sets, Chamber Sets, Bed Cases, Sideboards, Larders, Carpets, Mirrors, and every description of furniture, plates and glassware. Terms reasonable.

RUSS & DAVIDSON,
35 Diamond St.,
TITUSVILLE, PA.
(Opposite Herald Office)
Would invite old patrons and the public generally to call and examine our

SALENDIA STOCK OF
FURNITURE OF ALL KINDS.
Parlor Sets, Chamber Sets, Bed Cases, Sideboards, Larders, Carpets, Mirrors, and every description of furniture, plates and glassware. Terms reasonable.

RUSS & DAVIDSON,
35 Diamond St.,
TITUSVILLE, PA.
(Opposite Herald Office)
Would invite old patrons and the public generally to call and examine our

SALENDIA STOCK OF
FURNITURE OF ALL KINDS.
Parlor Sets, Chamber Sets, Bed Cases, Sideboards, Larders, Carpets, Mirrors, and every description of furniture, plates and glassware. Terms reasonable.

RUSS & DAVIDSON,
35 Diamond St.,
TITUSVILLE, PA.
(Opposite Herald Office)
Would invite old patrons and the public generally to call and examine our

SALENDIA STOCK OF
FURNITURE OF ALL KINDS.
Parlor Sets, Chamber Sets, Bed Cases, Sideboards, Larders, Carpets, Mirrors, and every description of furniture, plates and glassware. Terms reasonable.

RUSS & DAVIDSON,
35 Diamond St.,
TITUSVILLE, PA.
(Opposite Herald Office)
Would invite old patrons and the public generally to call and examine our

SALENDIA STOCK OF
FURNITURE OF ALL KINDS.
Parlor Sets, Chamber Sets, Bed Cases, Sideboards, Larders, Carpets, Mirrors, and every description of furniture, plates and glassware. Terms reasonable.

RUSS & DAVIDSON,
35 Diamond St.,
TITUSVILLE, PA.
(Opposite Herald Office)
Would invite old patrons and the public generally to call and examine our

SALENDIA STOCK OF
FURNITURE OF ALL KINDS.
Parlor Sets, Chamber Sets, Bed Cases, Sideboards, Larders, Carpets, Mirrors, and every description of furniture, plates and glassware. Terms reasonable.

RUSS & DAVIDSON,
35 Diamond St.,
TITUSVILLE, PA.
(Opposite Herald Office)
Would invite old patrons and the public generally to call and examine our