

CHESS.

THE GAME OF DRAUGHTS.

All communications should be addressed to the Chess Editor, P. O. Box 465.



Black men occupy squares 1 to 12; white men squares 13 to 24.

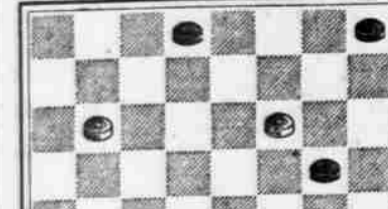
DISPATCH PROBLEM TOURNEY NO. 1.

- Report of S. M. Joseph. I rate the best positions only, as I did not deem it necessary to pass judgment upon the lighter ones.

Checker Headquarters—Home Hotel, Duquesne way, between Eighth and Ninth streets; at Samuel Leeds' 36 Seventh avenue, and Allegheny Checker Club room, Sheratt Building, Ohio and West Diamond streets.

TO CORRESPONDENTS. Positions, Problems, Games and Checker News will all times be welcome.

PROBLEM NO. 24—SELECTED.



White to move and draw.

PROBLEM NO. 25—END GAME.



White—(Jordan) 9, 12, 13, 15, 16, 19.

GAME ENDING—JORDAN VS. FRASER.



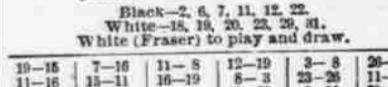
White—(Jordan) 9, 12, 13, 15, 16, 19.

GAME NO. 395—SINGLE CORNER.



White—(Jordan) 9, 12, 13, 15, 16, 19.

GAME NO. 396—WILTLER.



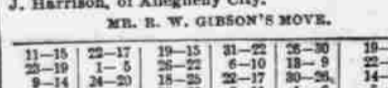
White—(Jordan) 9, 12, 13, 15, 16, 19.

GAME NO. 397—WAGRAM.



White—(Jordan) 9, 12, 13, 15, 16, 19.

GAME NO. 398—ALMA IRREGULAR.



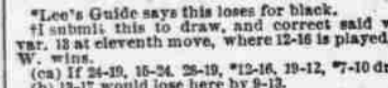
White—(Jordan) 9, 12, 13, 15, 16, 19.

GAME NO. 399—LAIRD AND LADY.



White—(Jordan) 9, 12, 13, 15, 16, 19.

EDINBURGH VERSUS DUNDEE.



White—(Jordan) 9, 12, 13, 15, 16, 19.

AMERICAN-ENGLISH JOURNALISM.

Mr. McCall has been a foreign correspondent of THE DISPATCH for a long time, and he is draughts editor of the leading column of draughts.

CHESSER CONDENSATIONS.

W. H. Craig, the Grove City expert, gave Males...

all he could do to defeat him, the score being Males 2, Craig 1, drawn 3.

Mr. Patterson, of Pittsburgh, made the best score against Kearns at Philadelphia, Kearns 1, Patterson 2, drawn 3.

Mr. Jackson, of Pittsburgh, writing from Chicago to a friend, says he is holding his own with the players of the great city.

Mr. Keating's style of playing the game could be adopted by all to advantage he plays to win, keeps partly out and is a careful student at every stage of the game.

The Scottish National Tourney is assuming immense proportions, and will be a grand affair.

Beattie, the sage of Liverpool, defines chess and draughts as follows: The two games cannot be very well compared, though in chess there is an immense greater scope for originality and genius.

Every Large City in the Country to Be Visited by Order of Congress.

CHICAGO, Dec. 1.—H. W. Spofford, of Washington, who has been appointed by Congress to investigate the slums of all the cities in the United States having a population of over 200,000, started out to-day with Police Inspector Ross to commence a preliminary investigation of the slums of Chicago.

Second-Hand "Grand" Planos. Mellor & Hoene, 77 Fifth Avenue.

WORTH A GUINEA A BOX. BEECHAM'S PILLS. CURE SICK HEADACHE, Disordered Liver, etc.

The Cook's TAZELLE. How to avoid sudden pastry! The PROBLEM is SOLVED by our NEW SHORTENING COCOLOLENE.

COLOLENE. Which makes light, crisp, healthy, wholesome pastry.

Mrs. McBride, Marion Harland, and other expert cooking authorities endorse COLOLENE. You can't afford to do without COLOLENE.

MADE ONLY BY N. K. FAIRBANK & CO., CHICAGO. Pittsburgh Agents: F. SELLERS & CO.

ALLEGHENY VALLEY RAILWAY—TAKING effect June 15, 1892. Trains leave Union station...

COLOLENE. Made only by N. K. FAIRBANK & CO., CHICAGO. Pittsburgh Agents: F. SELLERS & CO.

COLOLENE. Made only by N. K. FAIRBANK & CO., CHICAGO. Pittsburgh Agents: F. SELLERS & CO.

COLOLENE. Made only by N. K. FAIRBANK & CO., CHICAGO. Pittsburgh Agents: F. SELLERS & CO.

RAILROADS.

PENNSYLVANIA RAILROAD.

IN EFFECT JUNE 15, 1892. Trains will leave Union Station, Pittsburgh as follows (Eastern Standard Time):

MAIN LINE EASTWARD. Pennsylvania Limited of Pullman Vestibule Cars daily at 11:15 a. m., arriving at Harrisburg at 7:00 p. m., Baltimore at 10:00 p. m., Washington at 11:00 p. m., Philadelphia at 12:00 a. m., New York at 2:00 p. m.

Express daily at 8:00 a. m., arriving at Harrisburg at 1:00 p. m., Philadelphia at 3:00 p. m., New York at 5:00 p. m.

Express daily at 12:00 p. m., arriving at Harrisburg at 5:00 p. m., Philadelphia at 7:00 p. m., New York at 9:00 p. m.

Express daily at 3:00 p. m., arriving at Harrisburg at 8:00 p. m., Philadelphia at 10:00 p. m., New York at 12:00 a. m.

Express daily at 6:00 p. m., arriving at Harrisburg at 11:00 p. m., Philadelphia at 1:00 a. m., New York at 3:00 a. m.

Express daily at 9:00 p. m., arriving at Harrisburg at 2:00 a. m., Philadelphia at 4:00 a. m., New York at 6:00 a. m.

Express daily at 12:00 a. m., arriving at Harrisburg at 5:00 a. m., Philadelphia at 7:00 a. m., New York at 9:00 a. m.

Express daily at 3:00 a. m., arriving at Harrisburg at 8:00 a. m., Philadelphia at 10:00 a. m., New York at 12:00 p. m.

Express daily at 6:00 a. m., arriving at Harrisburg at 11:00 a. m., Philadelphia at 1:00 p. m., New York at 3:00 p. m.

Express daily at 9:00 a. m., arriving at Harrisburg at 2:00 p. m., Philadelphia at 4:00 p. m., New York at 6:00 p. m.

Express daily at 12:00 p. m., arriving at Harrisburg at 5:00 p. m., Philadelphia at 7:00 p. m., New York at 9:00 p. m.

Express daily at 3:00 p. m., arriving at Harrisburg at 8:00 p. m., Philadelphia at 10:00 p. m., New York at 12:00 a. m.

Express daily at 6:00 p. m., arriving at Harrisburg at 11:00 p. m., Philadelphia at 1:00 a. m., New York at 3:00 a. m.

Express daily at 9:00 p. m., arriving at Harrisburg at 2:00 a. m., Philadelphia at 4:00 a. m., New York at 6:00 a. m.

Express daily at 12:00 a. m., arriving at Harrisburg at 5:00 a. m., Philadelphia at 7:00 a. m., New York at 9:00 a. m.

Express daily at 3:00 a. m., arriving at Harrisburg at 8:00 a. m., Philadelphia at 10:00 a. m., New York at 12:00 p. m.

Express daily at 6:00 a. m., arriving at Harrisburg at 11:00 a. m., Philadelphia at 1:00 p. m., New York at 3:00 p. m.

THE BACKWARD SEASON

Us to unload. No loud boasting claims but solid facts presented to a discriminating public by

SALLER'S BARGAIN BULLETIN.

YOUR ATTENTION MEANS AND YOUR PURCHASE. Of this truly admirable coat. The price is correct. The goods and make-up excellent.

IN OUR MEN'S DEPARTMENT. We are giving FREE, with every purchase of \$10 or over, A Handsome Antique Oak Folding Table.

CHILDREN'S KLOTHING CENTER AT OUR STORE.

We are still driving the sale of our Children's All-Wool Suits, Hat to match, with extra pair of Pants, \$5.00.

FREE! FREE! A Blackboard, An Air Gun, A Flourent Rifle, A Banjo, A Football.

With every purchase of \$5 or over your choice of these gifts. We give gifts—our goods are our inducements.

4-PLY LINEN 2,100 FINE COLLARS 7c. 4-PLY LINEN 2,100 FINE CUFFS 11c.

Cor. Smithfield and Diamond Sts., BRASS FRONT.

Pennsylvania Lines. Trains Run by Central Time.

Northwest System—Fast Wayne Route. For Chicago, points intermediate and beyond: 11:30 a. m., 12:30 p. m., 1:30 p. m., 4:30 p. m., 5:30 p. m., 6:30 p. m., 7:30 p. m., 8:30 p. m., 9:30 p. m., 10:30 p. m., 11:30 p. m.

Southwest System—Pan Handle Route. For Columbus, Cincinnati, Indianapolis, St. Louis, points intermediate and beyond: 11:30 a. m., 12:30 p. m., 1:30 p. m., 4:30 p. m., 5:30 p. m., 6:30 p. m., 7:30 p. m., 8:30 p. m., 9:30 p. m., 10:30 p. m., 11:30 p. m.

Special Notices. PULLMAN SLEEPING CAR AND PULLMAN DINING CAR run through East and West, on principal lines of the System.

Actual Results. Show DISPATCH adlets to be most profitable to advertisers—Try them.

Actual Results. Show DISPATCH adlets to be most profitable to advertisers—Try them.

JAPANESE PILE CURE. A cure for Piles, External, Internal, Blind, Bleeding and Itching, Chronic, Recurrent or Hereditary.

DOCTOR'S COTTON ROOT COMPOUND. A recent discovery by an old physician, successfully used for thousands of years.

DOCTORS LAKE. SPECIALISTS in all cases of rheumatism, sciatica and neuralgia.

WEAK MEN. YOUR ATTENTION IS CALLED TO THIS. Gray's Specific Medicine.

THE ONLY REASON. For the continued increase of THE DISPATCH adlets is that they give satisfactory returns.