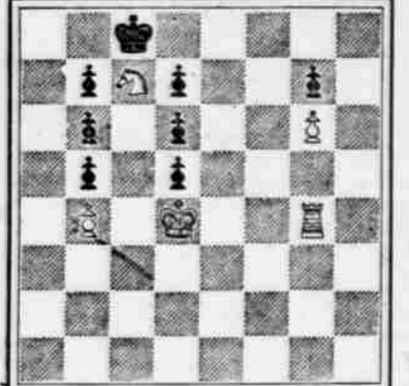


CHESS

Communications should be addressed to the Chess Editor, P. O. Box 83...

PROBLEM NO. 223. [Problem No. 223 Corrected.]



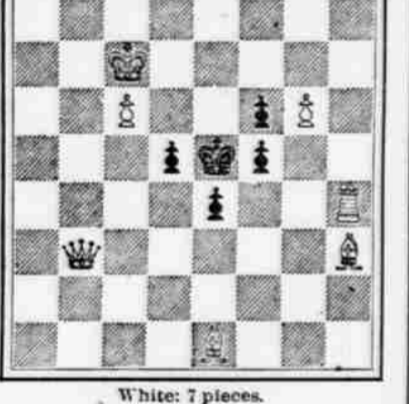
White: 8 pieces. White mates in three moves.

PROBLEM NO. 224. [Composed for The Dispatch.]



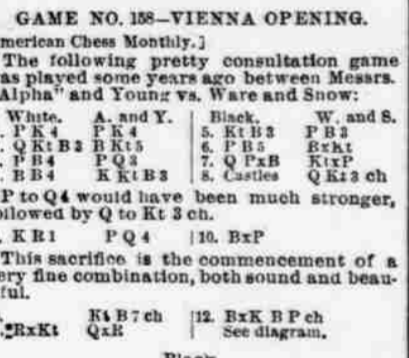
White: 8 pieces. White mates in three moves.

PROBLEM NO. 225. [Composed for The Dispatch.]



White: 8 pieces. White mates in three moves.

PROBLEM NO. 226. [Composed for The Dispatch.]

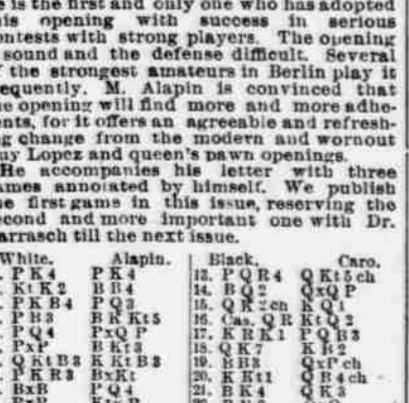


White: 8 pieces. White mates in three moves.



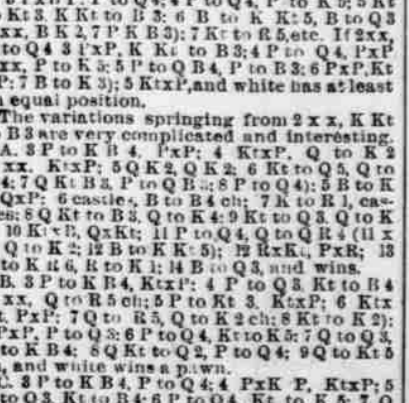
White: 8 pieces. White mates in three moves.

PROBLEM NO. 228. [Composed for The Dispatch.]



White: 8 pieces. White mates in three moves.

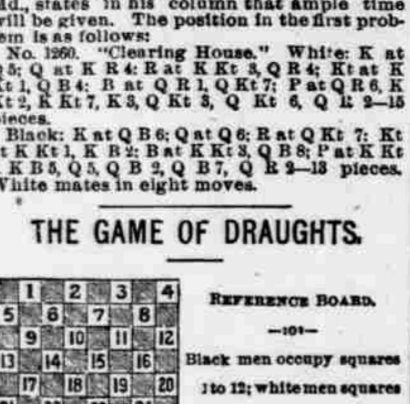
PROBLEM NO. 229. [Composed for The Dispatch.]



White: 8 pieces. White mates in three moves.

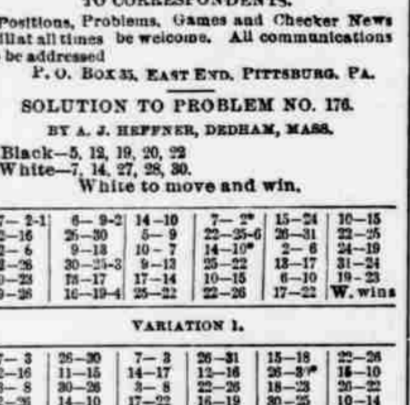
White: 8 pieces. White mates in three moves.

PROBLEM NO. 230. [Composed for The Dispatch.]



White: 8 pieces. White mates in three moves.

PROBLEM NO. 231. [Composed for The Dispatch.]



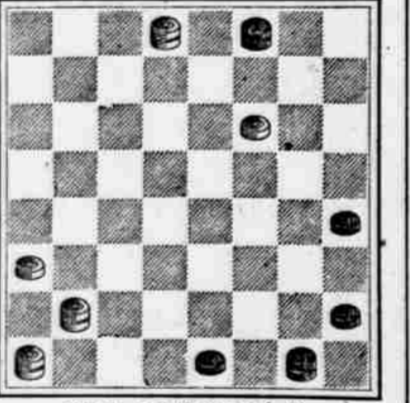
White: 8 pieces. White mates in three moves.

PROBLEM NO. 232. [Composed for The Dispatch.]



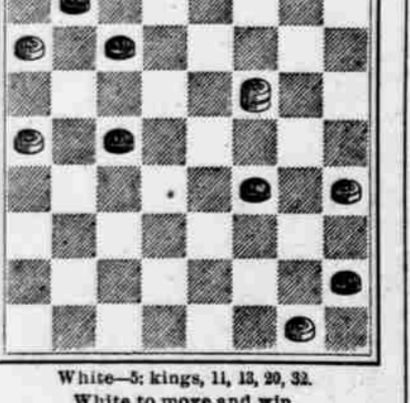
White: 8 pieces. White mates in three moves.

PROBLEM NO. 233. [Composed for The Dispatch.]



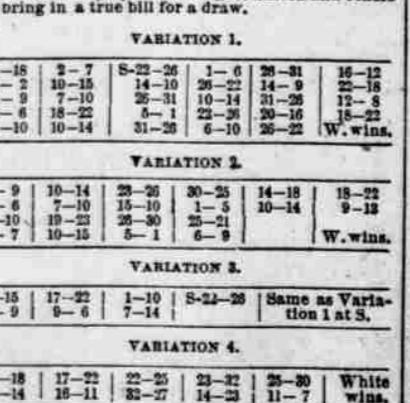
White: 8 pieces. White mates in three moves.

PROBLEM NO. 234. [Composed for The Dispatch.]



White: 8 pieces. White mates in three moves.

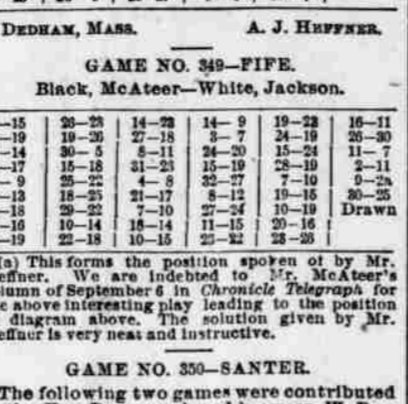
PROBLEM NO. 235. [Composed for The Dispatch.]



White: 8 pieces. White mates in three moves.

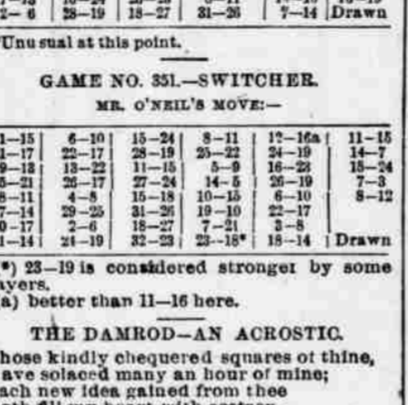
White: 8 pieces. White mates in three moves.

PROBLEM NO. 236. [Composed for The Dispatch.]



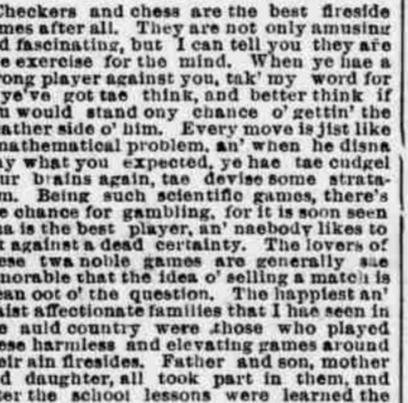
White: 8 pieces. White mates in three moves.

PROBLEM NO. 237. [Composed for The Dispatch.]



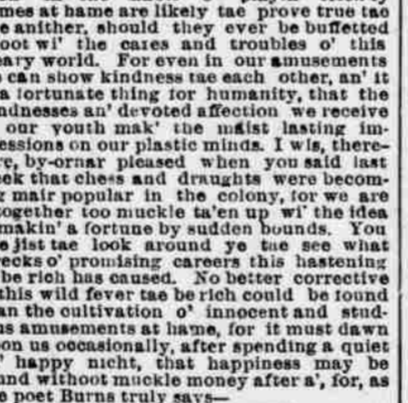
White: 8 pieces. White mates in three moves.

PROBLEM NO. 238. [Composed for The Dispatch.]



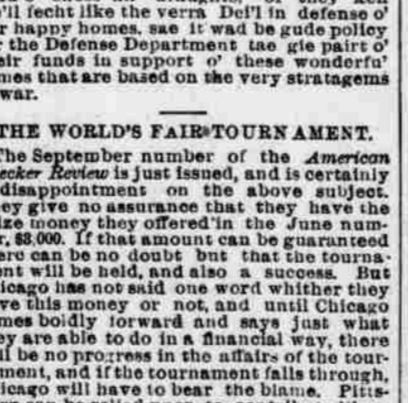
White: 8 pieces. White mates in three moves.

PROBLEM NO. 239. [Composed for The Dispatch.]



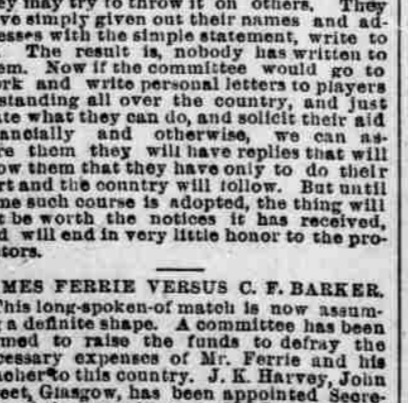
White: 8 pieces. White mates in three moves.

PROBLEM NO. 240. [Composed for The Dispatch.]



White: 8 pieces. White mates in three moves.

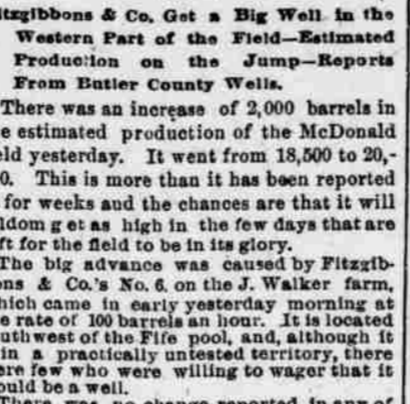
PROBLEM NO. 241. [Composed for The Dispatch.]



White: 8 pieces. White mates in three moves.

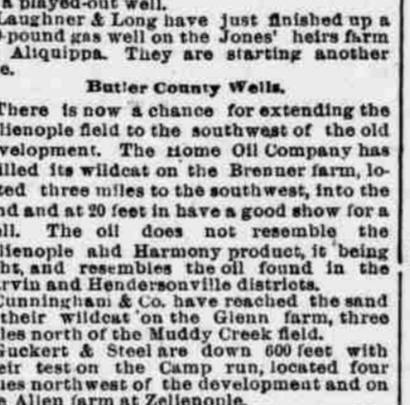
White: 8 pieces. White mates in three moves.

PROBLEM NO. 242. [Composed for The Dispatch.]



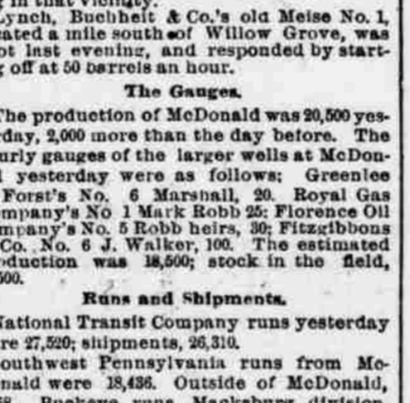
White: 8 pieces. White mates in three moves.

PROBLEM NO. 243. [Composed for The Dispatch.]



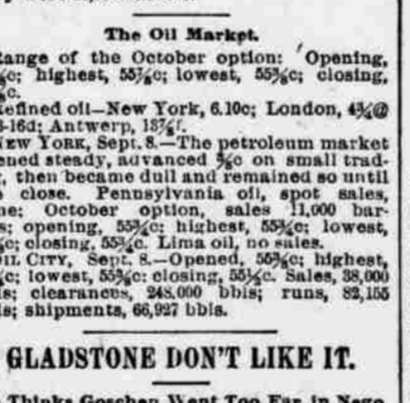
White: 8 pieces. White mates in three moves.

PROBLEM NO. 244. [Composed for The Dispatch.]



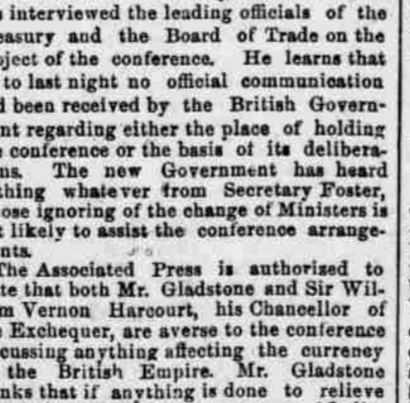
White: 8 pieces. White mates in three moves.

PROBLEM NO. 245. [Composed for The Dispatch.]



White: 8 pieces. White mates in three moves.

PROBLEM NO. 246. [Composed for The Dispatch.]



White: 8 pieces. White mates in three moves.

PROBLEM NO. 247. [Composed for The Dispatch.]



White: 8 pieces. White mates in three moves.

BROWN'S FRENCH DRESSING. Ladies' and Children's Boots and Shoes.

JAPANESE PILE CURE. A cure for Piles, External, Internal, Blind, Bleeding...

KIRK'S MUSKY DIAMOND SOAP. Healthful, Agreeable, Cleansing.

AMERICAN FAMILY SOAP. Best for General Household Use.

SUMMER RESORTS. HOTEL LAFAYETTE. THE CHALFONTE.

THE STAR LINE. For Queenstown and Liverpool.

ANCHOR LINE. Steamers Glasgow New York Every Saturday.

ALLAN LINE. ROYAL MAIL STEAMSHIP.

ELAINE. Never varies in quality. Cannot be exploded.

WARDEN & OXNARD. Manufacturers, Pittsburgh, Pa.

KOEHLER'S Installment House. We occupy the entire building.

PENNSYLVANIA RAILROAD. Trains will leave for various destinations.

WEST PENNSYLVANIA DIVISION. For Monaca, West Monaca, etc.

STATE LINE. NEW YORK AND GLASGOW.

ELAINE. The Family Oil. 100 Million Gallons Sold in 15 Years.

WARDEN & OXNARD. Manufacturers, Pittsburgh, Pa.

KOEHLER'S Installment House. We occupy the entire building.

PITTSBURGH AND LAKE ERIE RAILROAD. Trains will leave for various destinations.

McDONALD IS AGAIN UP. Fitzgibbons & Co. Get a Big Well in the Western Part of the Field.

THE DAMROD—AN ACROSTIC. Those kindly chequered squares of thine, I have solaced many an hour of mine.

CHECKERS AND CHESS. Checkers and chess are the best friends games after all.

THE WORLD'S FAIR TOURNAMENT. The September number of the American Checker Review is just issued.

ALAPIN'S OPENING. In a letter published in Deutsches Wochenblatt August 21, 1892, M. Alapin states that he is the first and only one who has adopted this opening.

NOTES BY ALAPIN. With the view of playing P to K B4, so as to have the advantages of the King's Gambit without the usual pawn sacrifice.

THE OIL MARKET. Range of the October option: Opening, 55 1/2; highest, 55 1/2; lowest, 55; closing, 55 1/2.

GLADSTONE DON'T LIKE IT. He thinks Goschen went too far in negotiating with Secretary Foster for the International Monetary Conference.

JAMES FERRIE VERSUS C. F. BARKER. This long-spoken-of match is now assuming the shape of a committee.

THE OIL MARKET. Range of the October option: Opening, 55 1/2; highest, 55 1/2; lowest, 55; closing, 55 1/2.

GLADSTONE DON'T LIKE IT. He thinks Goschen went too far in negotiating with Secretary Foster for the International Monetary Conference.

JAMES FERRIE VERSUS C. F. BARKER. This long-spoken-of match is now assuming the shape of a committee.

ABSOLUTELY PURE. THIS INK IS MANUFACTURED BY J. HARPER DONNELL CO., NEW YORK.

Baking Powder. Highest of all in Leavening Power.—Latest U. S. Gov't Report.

ABSOLUTELY PURE. THIS INK IS MANUFACTURED BY J. HARPER DONNELL CO., NEW YORK.

ABSOLUTELY PURE. THIS INK IS MANUFACTURED BY J. HARPER DONNELL CO., NEW YORK.

ABSOLUTELY PURE. THIS INK IS MANUFACTURED BY J. HARPER DONNELL CO., NEW YORK.

ABSOLUTELY PURE. THIS INK IS MANUFACTURED BY J. HARPER DONNELL CO., NEW YORK.