

WHERE TO GO FOR THE SUMMER

The Dispatch Investigates the Features of the Various Resorts.

MERITS OF THE MOUNTAINS

Compared With Those of the Lakes and Rippling Streams.

The Places Which Are Most Carefully Selected for Social Pleasures—Spots Suitable for Camping Parties and Nooks Favorable to Anglers—Points Which Combine the Attractions of Health and Rest—Where Horses Play a Prominent Part in the Enjoyments—Some New Resorts and Many Recent Improvements—The Question of Expense.

"Where shall I spend my vacation?" asks the business man as he leans over his desk, and thinks of the precious days or weeks in the near future which he intends to devote to rest and recreation.

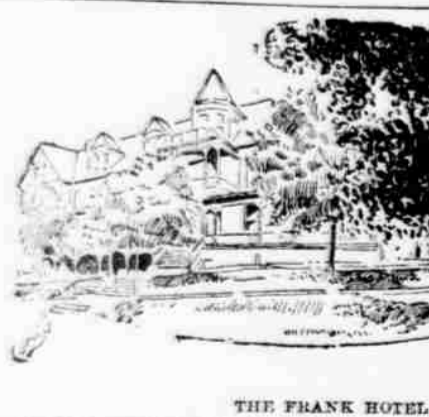


TALLYHO COACHING AT BEDFORD.

physically out of sorts, while the careful patron is eager for information as to places best adapted for the family, and especially the children.

BEAUTIFUL BEDFORD.

For Years It Has Been the Summer Home of Many Pittsburghers.



THE FRANK HOTEL AT LIGONIER.

would be an attraction of merit. The celebrated springs, the waters of which are declared to rival or surpass those of the most noted European health resorts, of course form the foundation of the prosperity of the place.

are conspicuous features of the large hotel buildings, and orchestras of a high class furnish the music for the dining fest.



RHODODENDRON PARK, NEAR CRESSON.

supply of boats and canoes is provided for lovers of aquatic pleasures. Juniata Crossing, 13 miles east, is an old-fashioned inn of stage coach days, and a great resort for fishermen.



THE INDIAN CLUB AT CONNEAUT—ONE DAY'S CATCH.

which bursts forth in the vicinity of the first three. The ascent is gradual, though some authorities show all of these springs to possess different and valuable medicinal properties.

CAMPING AT CONNEAUT.

The Changes to Be Made Around Pennsylvania's Largest Lake.



THE SUIPER SPRING AT BEDFORD.

the lake, besides the regular steamers. There are plenty of tents at the disposal of camping parties, and excellent meals are prepared at the dining halls for those who are not provided with their own.

lake, and during the winter a large number of horses have been trained for the eastern polo grounds. During the summer it is expected that there will be a number of interesting and exciting events.



THE BIG TREES AT CRESSON.

have been made for the entertainment of the children. Hunting and driving there is ample scope. From the hotel roads diverge in many directions, leading over mountain and valley.



THE INDIAN CLUB AT CONNEAUT—ONE DAY'S CATCH.

with good boating and fishing, pike being particularly plentiful. Many good spots for camping out can be found.

CRITICAL CHAUTAUQUA.

The Resort Which Makes a Feature of Intellectual Entertainment.



LAKESIDE, NEAR SANDUSKY, O.

the lake is known as Point Chautauqua, and Lakewood, Greenhurst, Bemis, Pendragast and Long Point are names given to various bays and coves which have developed into resorts of character and note.

are made for Cresson as a health-giving spot. The pure air and water are reputed to be deadly enemies to malaria.



THE INDIAN CLUB AT CONNEAUT—ONE DAY'S CATCH.

strong points is its ease of access, being only a few hours' ride from any of the big cities of the East. The Mountain House and cottages have a capacity to entertain 1,000 guests, and the rates range from \$18 to \$25 a week.

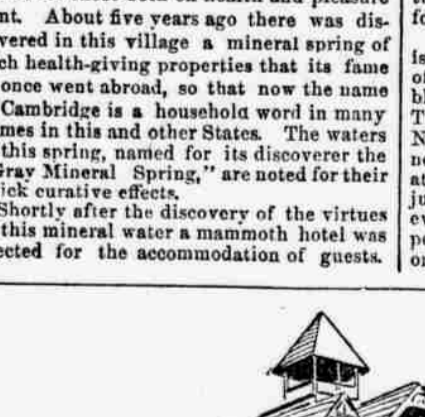


THE INDIAN CLUB AT CONNEAUT—ONE DAY'S CATCH.

with good boating and fishing, pike being particularly plentiful. Many good spots for camping out can be found.

CAMBRIDGEBORO'S CLAIMS.

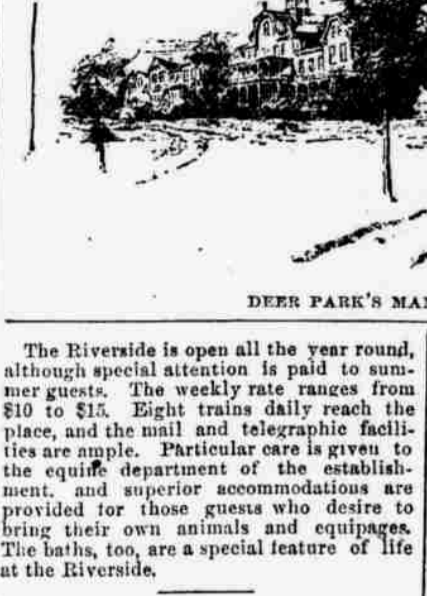
A Comparatively New and Growing Health and Pleasure Resort.



ENTRANCE TO PINE HEIGHTS INN.

fair sex, from the more elderly matrons to the amusement-loving belles of the season. In the evenings a superior orchestra floods the parlors and ballroom with strains which keep time with the flying feet.

very pretty place. The present rate of inflation at Riverside would indicate that before the month of May is ended Cambridge and the hotel will be taxed to their full capacity.



DEER PARK'S MAMMOTH HOSTELRY.

The Riverside is open all the year round, although special attention is paid to summer guests. The weekly rate ranges from \$10 to \$18.

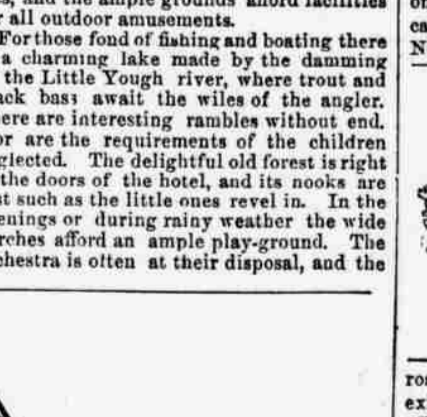


DEER PARK'S MAMMOTH HOSTELRY.

mountain air and quiet. Some 50 miles east of Cumberland, has Berkeley Springs, convenient to Washington and Baltimore.

ELEVATED EBENSBURG.

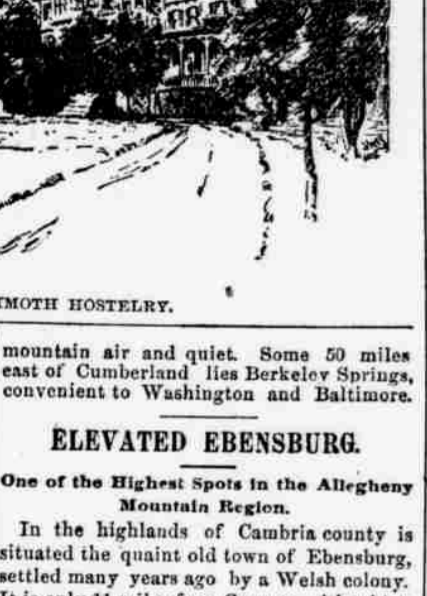
One of the Highest Spots in the Allegheny Mountain Region.



PROSPECT POINT AND PLEASURE BAY, PUT-IN-BAY ISLAND.

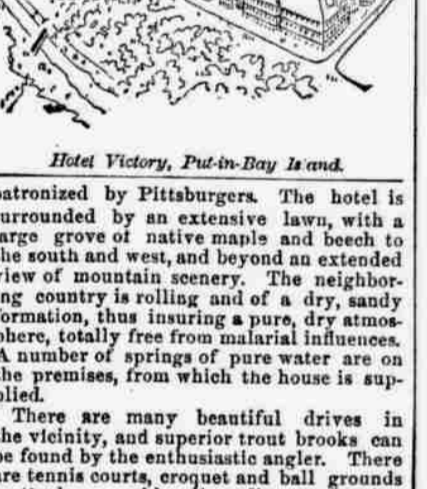
stantially built, with spacious porches and parlors, and every modern convenience. The weekly rates at the Maple Springs Park Hotel range from \$10 to \$20.

the chief resorts on the line of the Baltimore and Ohio, that line boasts many other spots in which the summer days can be pleasantly whiled away.



DEER PARK'S MAMMOTH HOSTELRY.

mountain air and quiet. Some 50 miles east of Cumberland, has Berkeley Springs, convenient to Washington and Baltimore.

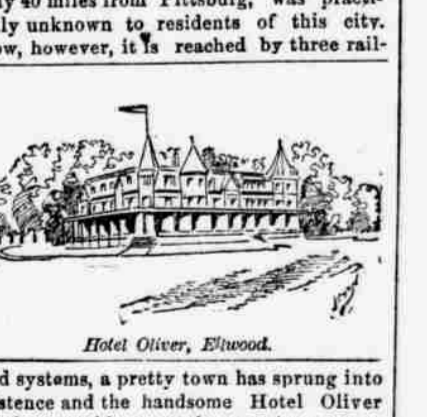


DEER PARK'S MAMMOTH HOSTELRY.

mountain air and quiet. Some 50 miles east of Cumberland, has Berkeley Springs, convenient to Washington and Baltimore.

ELLWOOD'S ENTICEMENTS.

The New Resort Right at the Gates of Pittsburgh.



HOTEL OLIVER, ELWOOD.

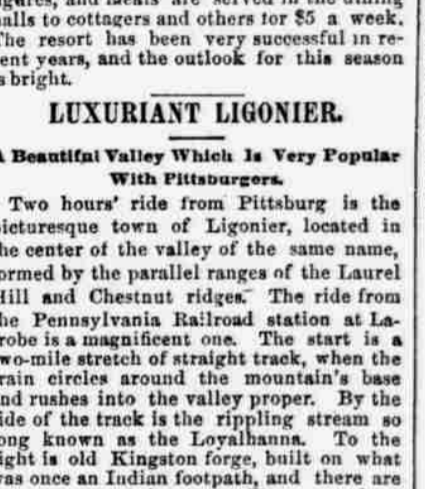
road system, a pretty town has sprung into existence and the handsome Hotel Oliver affords agreeable entertainment for numerous guests.

seekers spend a few pleasant hours during the summer season.



DEER PARK'S MAMMOTH HOSTELRY.

mountain air and quiet. Some 50 miles east of Cumberland, has Berkeley Springs, convenient to Washington and Baltimore.



DEER PARK'S MAMMOTH HOSTELRY.

mountain air and quiet. Some 50 miles east of Cumberland, has Berkeley Springs, convenient to Washington and Baltimore.

LUXURIANT LIGONIER.

A Beautiful Valley Which is Very Popular With Pittsburghers.



HOTEL RIVERSIDE, CAMBRIDGEBORO.

children. The hotel will be open from June 1 to October 1. A telegraph office is located in the building, and the mail and other facilities of communication are very complete.

100 acres of highly ornamented grounds, sloping from the river to a height of 1,200 feet. The grounds themselves contain miles of walks and drives of rare attractiveness and picturesque views.



DEER PARK'S MAMMOTH HOSTELRY.

mountain air and quiet. Some 50 miles east of Cumberland, has Berkeley Springs, convenient to Washington and Baltimore.



DEER PARK'S MAMMOTH HOSTELRY.

mountain air and quiet. Some 50 miles east of Cumberland, has Berkeley Springs, convenient to Washington and Baltimore.

PICTURESQUE PUT-IN-BAY.

The Island Now Being Developed in an Elaborate Manner.



HOTEL RIVERSIDE, CAMBRIDGEBORO.

combine to make it a natural resort of the Central, Western and Southwestern States. The Put-in-Bay Hotel Company, realizing that Put-in-Bay has all the advantages of a summer resort, is preparing to commence right away the surest way to success, determined to build a hotel so large, magnificent and elegant in its proportions and fittings, that it would at once attract the attention and command the patronage of the better class of people of all the vast tributary territory.