

SPURT AT McDONALD.

New Wells and Nitro-Glycerine Increase the Production.

HARD LUCK FOR THE OAKDALE.

The Spear Well Northeast of McCurdy Has Stopped Flowing.

WELL FOUND IN LAWRENCE COUNTY

There was a boom in the McDonald field yesterday. For the first time in several weeks it advanced 2,000 barrels in one day.

Three new wells were added to the list of those making 20 barrels an hour or more. One of these was brought up by the liberal use of nitro-glycerine and the other two by the Lynch, Buckheit & Co's No. 1 on the Meise which the pipe line gaugers reported to have dropped to 40 from 45 barrels an hour.

Only one well in the list declined and that was the Lynch, Buckheit & Co's No. 1 on the Meise which the pipe line gaugers reported to have dropped to 40 from 45 barrels an hour.

The most unexpected development was at Davis, Ross & Brown's well on the Wilkeson lot, east of J. M. Guffey & Co's No. 2, which the Forest Oil Company's pipe line gaugers reported to have dropped to 40 from 45 barrels an hour.

The Forest Oil Company's well on the McCurdy farm back of Oakdale, yesterday and it started off at 35 barrels an hour. It is known as being a dry well, but this morning it started off at 35 barrels an hour.

The Forest Oil Company's well on the McCurdy farm back of Oakdale, yesterday and it started off at 35 barrels an hour. It is known as being a dry well, but this morning it started off at 35 barrels an hour.

The Forest Oil Company's well on the McCurdy farm back of Oakdale, yesterday and it started off at 35 barrels an hour. It is known as being a dry well, but this morning it started off at 35 barrels an hour.

The Forest Oil Company's well on the McCurdy farm back of Oakdale, yesterday and it started off at 35 barrels an hour. It is known as being a dry well, but this morning it started off at 35 barrels an hour.

The Forest Oil Company's well on the McCurdy farm back of Oakdale, yesterday and it started off at 35 barrels an hour. It is known as being a dry well, but this morning it started off at 35 barrels an hour.

The Forest Oil Company's well on the McCurdy farm back of Oakdale, yesterday and it started off at 35 barrels an hour. It is known as being a dry well, but this morning it started off at 35 barrels an hour.

The Forest Oil Company's well on the McCurdy farm back of Oakdale, yesterday and it started off at 35 barrels an hour. It is known as being a dry well, but this morning it started off at 35 barrels an hour.

The Forest Oil Company's well on the McCurdy farm back of Oakdale, yesterday and it started off at 35 barrels an hour. It is known as being a dry well, but this morning it started off at 35 barrels an hour.

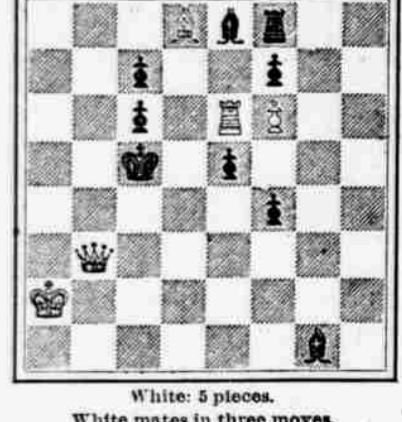
The Forest Oil Company's well on the McCurdy farm back of Oakdale, yesterday and it started off at 35 barrels an hour. It is known as being a dry well, but this morning it started off at 35 barrels an hour.

The Forest Oil Company's well on the McCurdy farm back of Oakdale, yesterday and it started off at 35 barrels an hour. It is known as being a dry well, but this morning it started off at 35 barrels an hour.

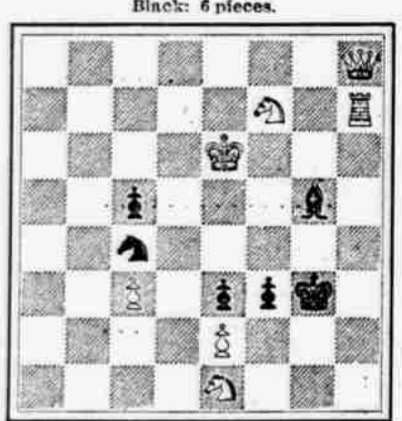
The Forest Oil Company's well on the McCurdy farm back of Oakdale, yesterday and it started off at 35 barrels an hour. It is known as being a dry well, but this morning it started off at 35 barrels an hour.

CHESS.

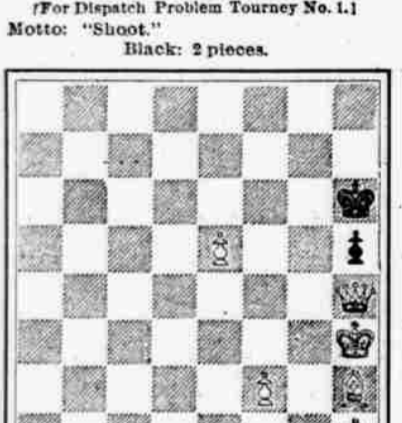
White mates in three moves. Problem No. 192. (For Dispatch Problem Tourney No. 1.)



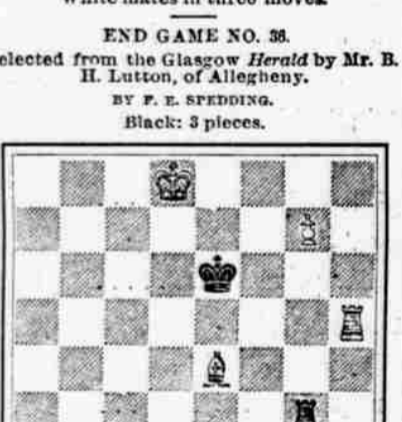
White mates in three moves. Problem No. 193. (For Dispatch Problem Tourney No. 1.)



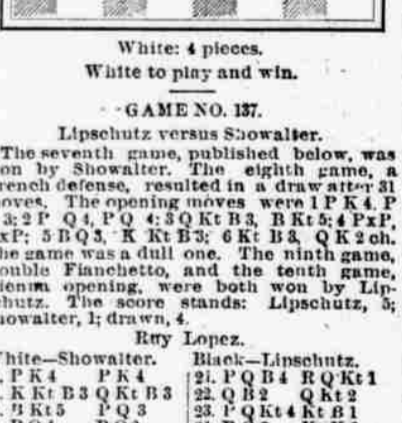
White mates in three moves. Problem No. 194. (For Dispatch Problem Tourney No. 1.)



White mates in three moves. Problem No. 195. (For Dispatch Problem Tourney No. 1.)



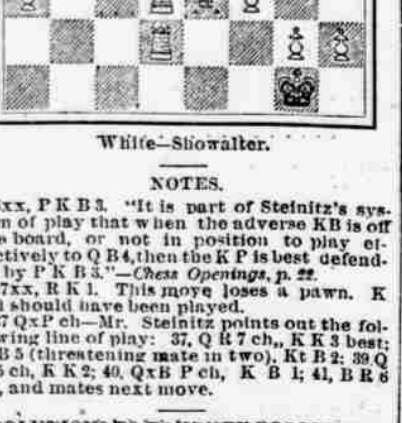
White mates in three moves. Problem No. 196. (For Dispatch Problem Tourney No. 1.)



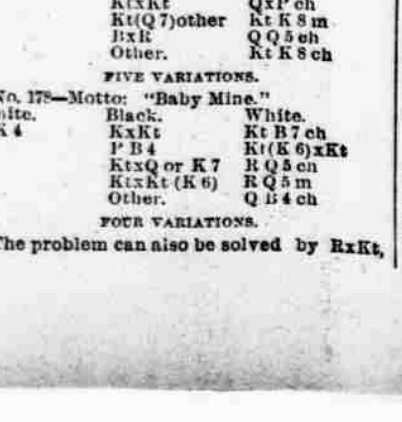
White mates in three moves. Problem No. 197. (For Dispatch Problem Tourney No. 1.)



White mates in three moves. Problem No. 198. (For Dispatch Problem Tourney No. 1.)



White mates in three moves. Problem No. 199. (For Dispatch Problem Tourney No. 1.)



three variations, and by Kt(K6)xBk, two variations. No. 179—Motto: "Hoc Signo Vincam."

White mates in three moves. Problem No. 192. (For Dispatch Problem Tourney No. 1.)

White mates in three moves. Problem No. 193. (For Dispatch Problem Tourney No. 1.)

White mates in three moves. Problem No. 194. (For Dispatch Problem Tourney No. 1.)

White mates in three moves. Problem No. 195. (For Dispatch Problem Tourney No. 1.)

White mates in three moves. Problem No. 196. (For Dispatch Problem Tourney No. 1.)

White mates in three moves. Problem No. 197. (For Dispatch Problem Tourney No. 1.)

White mates in three moves. Problem No. 198. (For Dispatch Problem Tourney No. 1.)

White mates in three moves. Problem No. 199. (For Dispatch Problem Tourney No. 1.)

White mates in three moves. Problem No. 200. (For Dispatch Problem Tourney No. 1.)

White mates in three moves. Problem No. 201. (For Dispatch Problem Tourney No. 1.)

White mates in three moves. Problem No. 202. (For Dispatch Problem Tourney No. 1.)

White mates in three moves. Problem No. 203. (For Dispatch Problem Tourney No. 1.)

White mates in three moves. Problem No. 204. (For Dispatch Problem Tourney No. 1.)

White mates in three moves. Problem No. 205. (For Dispatch Problem Tourney No. 1.)

White mates in three moves. Problem No. 206. (For Dispatch Problem Tourney No. 1.)

White mates in three moves. Problem No. 207. (For Dispatch Problem Tourney No. 1.)

White mates in three moves. Problem No. 208. (For Dispatch Problem Tourney No. 1.)

White mates in three moves. Problem No. 209. (For Dispatch Problem Tourney No. 1.)

White mates in three moves. Problem No. 210. (For Dispatch Problem Tourney No. 1.)

White mates in three moves. Problem No. 211. (For Dispatch Problem Tourney No. 1.)

White mates in three moves. Problem No. 212. (For Dispatch Problem Tourney No. 1.)

White mates in three moves. Problem No. 213. (For Dispatch Problem Tourney No. 1.)

White mates in three moves. Problem No. 214. (For Dispatch Problem Tourney No. 1.)

White mates in three moves. Problem No. 215. (For Dispatch Problem Tourney No. 1.)

White mates in three moves. Problem No. 216. (For Dispatch Problem Tourney No. 1.)

White mates in three moves. Problem No. 217. (For Dispatch Problem Tourney No. 1.)

White mates in three moves. Problem No. 218. (For Dispatch Problem Tourney No. 1.)

White mates in three moves. Problem No. 219. (For Dispatch Problem Tourney No. 1.)

White mates in three moves. Problem No. 220. (For Dispatch Problem Tourney No. 1.)

White mates in three moves. Problem No. 221. (For Dispatch Problem Tourney No. 1.)

White mates in three moves. Problem No. 222. (For Dispatch Problem Tourney No. 1.)

White mates in three moves. Problem No. 223. (For Dispatch Problem Tourney No. 1.)

White mates in three moves. Problem No. 224. (For Dispatch Problem Tourney No. 1.)

White mates in three moves. Problem No. 225. (For Dispatch Problem Tourney No. 1.)

White mates in three moves. Problem No. 226. (For Dispatch Problem Tourney No. 1.)

White mates in three moves. Problem No. 227. (For Dispatch Problem Tourney No. 1.)

White mates in three moves. Problem No. 228. (For Dispatch Problem Tourney No. 1.)

White mates in three moves. Problem No. 229. (For Dispatch Problem Tourney No. 1.)

White mates in three moves. Problem No. 230. (For Dispatch Problem Tourney No. 1.)

White mates in three moves. Problem No. 231. (For Dispatch Problem Tourney No. 1.)

White mates in three moves. Problem No. 232. (For Dispatch Problem Tourney No. 1.)

White mates in three moves. Problem No. 233. (For Dispatch Problem Tourney No. 1.)

White mates in three moves. Problem No. 234. (For Dispatch Problem Tourney No. 1.)

White mates in three moves. Problem No. 235. (For Dispatch Problem Tourney No. 1.)

White mates in three moves. Problem No. 236. (For Dispatch Problem Tourney No. 1.)

White mates in three moves. Problem No. 237. (For Dispatch Problem Tourney No. 1.)

White mates in three moves. Problem No. 238. (For Dispatch Problem Tourney No. 1.)

White mates in three moves. Problem No. 239. (For Dispatch Problem Tourney No. 1.)

White mates in three moves. Problem No. 240. (For Dispatch Problem Tourney No. 1.)

White mates in three moves. Problem No. 241. (For Dispatch Problem Tourney No. 1.)

White mates in three moves. Problem No. 242. (For Dispatch Problem Tourney No. 1.)

White mates in three moves. Problem No. 243. (For Dispatch Problem Tourney No. 1.)

White mates in three moves. Problem No. 244. (For Dispatch Problem Tourney No. 1.)

White mates in three moves. Problem No. 245. (For Dispatch Problem Tourney No. 1.)

THE GAME OF DRAUGHTS.

CONDUCTED BY J. B. FERGUSON. Black men occupy squares 1 to 12. White men occupy squares 13 to 24. Black men always move first.

Checker Headquarters—Home Hotel, Duquesne street between Eighth and Ninth streets, and at Samuel Beards', 95 Seventh avenue.

Positions, Problems, Games and Checker News will at all times be welcome. All communications to be addressed to F. O. BOX 5, EAST END, PITTSBURGH, PA.

PROBLEM NO. 139. BY DR. T. J. BROWN, BOOTLE, LIVERPOOL. White—21; kings, 12, 9.

PROBLEM NO. 140. BY DR. T. J. BROWN, BOOTLE, LIVERPOOL. White—21; king, 2.

PROBLEM NO. 141. Black to move, and what result? With reference to the above Dr. Brown observes: "On page 111 of 'Lynan's Problem Book' are four positions, by the late lamented R. E. Brown, in appearance very distinctly resembling each other in that each is placed at the low-numbered side of the board, each constructed of five kings versus two kings and a man, and each having two black kings opposed to a white king and man in the pose of First Position; but this quartet group is more correctly a sextose, two of those studies being wrong irrespective of move. The above, as representing the three characteristics named, might be considered as an addition to that family group, and forming No. 7 of the series."

PROBLEM NO. 142. BY DR. T. J. BROWN, BOOTLE, LIVERPOOL. White—21; king, 2.

PROBLEM NO. 143. BY DR. T. J. BROWN, BOOTLE, LIVERPOOL. White—21; king, 2.

PROBLEM NO. 144. BY DR. T. J. BROWN, BOOTLE, LIVERPOOL. White—21; king, 2.

THE GAME OF DRAUGHTS.

CONDUCTED BY J. B. FERGUSON. Black men occupy squares 1 to 12. White men occupy squares 13 to 24. Black men always move first.

Checker Headquarters—Home Hotel, Duquesne street between Eighth and Ninth streets, and at Samuel Beards', 95 Seventh avenue.

Positions, Problems, Games and Checker News will at all times be welcome. All communications to be addressed to F. O. BOX 5, EAST END, PITTSBURGH, PA.

PROBLEM NO. 139. BY DR. T. J. BROWN, BOOTLE, LIVERPOOL. White—21; kings, 12, 9.

PROBLEM NO. 140. BY DR. T. J. BROWN, BOOTLE, LIVERPOOL. White—21; king, 2.

PROBLEM NO. 141. Black to move, and what result? With reference to the above Dr. Brown observes: "On page 111 of 'Lynan's Problem Book' are four positions, by the late lamented R. E. Brown, in appearance very distinctly resembling each other in that each is placed at the low-numbered side of the board, each constructed of five kings versus two kings and a man, and each having two black kings opposed to a white king and man in the pose of First Position; but this quartet group is more correctly a sextose, two of those studies being wrong irrespective of move. The above, as representing the three characteristics named, might be considered as an addition to that family group, and forming No. 7 of the series."

PROBLEM NO. 142. BY DR. T. J. BROWN, BOOTLE, LIVERPOOL. White—21; king, 2.

PROBLEM NO. 143. BY DR. T. J. BROWN, BOOTLE, LIVERPOOL. White—21; king, 2.

PROBLEM NO. 144. BY DR. T. J. BROWN, BOOTLE, LIVERPOOL. White—21; king, 2.



Good Old Fashioned Gingerbread. COTTOLENE is a vegetable product; new to the world, yet already famous as a perfect, wholesome and economical substitute for lard and butter in all kinds of cooking.

THE NEW SHORTENING, Instead of BUTTER. It will make the cake better, and impart a rich, delicate flavor, the same as in our Grandmother's Gingerbread.

DIAMONDS ARE TRUMP. The above cards, six and five, represent the diamonds and hearts of a deck of cards. They are a pure mineral, cannot be detected, faceted and polished like the genuine. Not in the hands of other jewelers.

Voltaic Diamonds. Take every trick. They are a pure mineral, cannot be detected, faceted and polished like the genuine. Not in the hands of other jewelers.

CREDIT KOEHLER'S Installment House. We occupy the entire building 17 Sixth Street. MENS' AND BOYS' Clothing on Credit.

LADIES' CLOAKS & JACKETS, Watches & Jewelry, INSTALLMENTS. Cash Prices—Without Security.

RAILROADS. PENNSYLVANIA RAILROAD. SCHEDULE IN EFFECT DECEMBER 28, 1921. Trains will leave Union Station, Pittsburgh, as follows:

RAILROADS. PENNSYLVANIA RAILROAD. SCHEDULE IN EFFECT DECEMBER 28, 1921. Trains will leave Union Station, Pittsburgh, as follows:

RAILROADS. PENNSYLVANIA RAILROAD. SCHEDULE IN EFFECT DECEMBER 28, 1921. Trains will leave Union Station, Pittsburgh, as follows:

RAILROADS. PENNSYLVANIA RAILROAD. SCHEDULE IN EFFECT DECEMBER 28, 1921. Trains will leave Union Station, Pittsburgh, as follows:

RAILROADS. PENNSYLVANIA RAILROAD. SCHEDULE IN EFFECT DECEMBER 28, 1921. Trains will leave Union Station, Pittsburgh, as follows:

RAILROADS. PENNSYLVANIA RAILROAD. SCHEDULE IN EFFECT DECEMBER 28, 1921. Trains will leave Union Station, Pittsburgh, as follows:

RAILROADS. PENNSYLVANIA RAILROAD. SCHEDULE IN EFFECT DECEMBER 28, 1921. Trains will leave Union Station, Pittsburgh, as follows:

RAILROADS. PENNSYLVANIA RAILROAD. SCHEDULE IN EFFECT DECEMBER 28, 1921. Trains will leave Union Station, Pittsburgh, as follows:

RAILROADS. PENNSYLVANIA RAILROAD. SCHEDULE IN EFFECT DECEMBER 28, 1921. Trains will leave Union Station, Pittsburgh, as follows:

RAILROADS. PENNSYLVANIA RAILROAD. SCHEDULE IN EFFECT DECEMBER 28, 1921. Trains will leave Union Station, Pittsburgh, as follows:

RAILROADS. PENNSYLVANIA RAILROAD. SCHEDULE IN EFFECT DECEMBER 28, 1921. Trains will leave Union Station, Pittsburgh, as follows:

RAILROADS. ALLEGHENY VALLEY RAILROAD CO. After Sunday, March 28, 1922, trains will leave and arrive at Union Station, Pittsburgh, east end, standard time, as follows:

RAILROADS. ALLEGHENY VALLEY RAILROAD CO. After Sunday, March 28, 1922, trains will leave and arrive at Union Station, Pittsburgh, east end, standard time, as follows:

RAILROADS. ALLEGHENY VALLEY RAILROAD CO. After Sunday, March 28, 1922, trains will leave and arrive at Union Station, Pittsburgh, east end, standard time, as follows:

RAILROADS. ALLEGHENY VALLEY RAILROAD CO. After Sunday, March 28, 1922, trains will leave and arrive at Union Station, Pittsburgh, east end, standard time, as follows:

RAILROADS. ALLEGHENY VALLEY RAILROAD CO. After Sunday, March 28, 1922, trains will leave and arrive at Union Station, Pittsburgh, east end, standard time, as follows:

RAILROADS. ALLEGHENY VALLEY RAILROAD CO. After Sunday, March 28, 1922, trains will leave and arrive at Union Station, Pittsburgh, east end, standard time, as follows:

RAILROADS. ALLEGHENY VALLEY RAILROAD CO. After Sunday, March 28, 1922, trains will leave and arrive at Union Station, Pittsburgh, east end, standard time, as follows:

RAILROADS. ALLEGHENY VALLEY RAILROAD CO. After Sunday, March 28, 1922, trains will leave and arrive at Union Station, Pittsburgh, east end, standard time, as follows:

RAILROADS. ALLEGHENY VALLEY RAILROAD CO. After Sunday, March 28, 1922, trains will leave and arrive at Union Station, Pittsburgh, east end, standard time, as follows:

RAILROADS. ALLEGHENY VALLEY RAILROAD CO. After Sunday, March 28, 1922, trains will leave and arrive at Union Station, Pittsburgh, east end, standard time, as follows:

RAILROADS. ALLEGHENY VALLEY RAILROAD CO. After Sunday, March 28, 1922, trains will leave and arrive at Union Station, Pittsburgh, east end, standard time, as follows:

STEELE'S SHOE HOUSE. 52 6th St. ARTIST AND PHOTOGRAPHER. Cabnets, \$2 to \$14 per dozen; gaiters, \$1 per dozen. Telephone 1781. ap4-wrsw