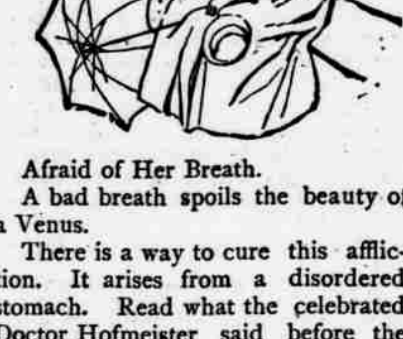


DENYING THE CRUELTY
Reformatory Officers have an Inning With the Committee.
BLOWS SOMETIMES NECESSARY,
But They Say Physical Injury Was Not One of the Results.
KNIVES TAKEN FROM THE INMATES

WORKING ON THE LIST.
Continued from Eighth Page.
censes and were unquestioned: W. W. Collier & Knodolph Heilmann, 81 Fifty-first street; M. C. Dwyer, 610 Butler street; Dennis Haggerty, 5164 Butler street; Philip Stenlen, 5202 and 5204 Butler street; John Utzig, 5333 Butler street; John M. Kerr, 5104 Butler street; John McIntyre, 5166 Butler street; Timothy O'Connor, 5300 Butler street.

THE WELLS DECLINE.
McDonald's Production Dropped a Thousand Barrels Yesterday.
NO BIG WELLS WERE REPORTED.
Several Places Where Operators Expect to Reach the Sand To-day.
FAYETTE COUNTY IS TO BE TESTED

McDonald's Production Dropped a Thousand Barrels Yesterday.
The McDonald field was down to 25,500 yesterday in point of production. No new wells of any size were brought in, and the old wells dropped off rapidly. Two wells in the list of those doing 20 barrels an hour or more were dropped, while all but three of the others declined.



Afraid of Her Beauty.
A bad breath spoils the beauty of a Venus.
There is a way to cure this affliction. It arises from a disordered stomach. Read what the celebrated Doctor Hofmeister said before the Medical Society of London:
"The unnatural motions of the stomach, causing pressure and belchings, the irritation of the intestines, resulting in catarrh of the bowels, and the inflamed mucous membranes, are the most fruitful of all known causes of disease."
"I have found that the unnatural motions of the stomach cause, the intestinal troubles become soothed, and health results from the use of Carlsbad Waters or Sprudel Salts. The diuretic effect of these remedies, its quiet action upon the lining of the stomach and its healing power upon the inflamed intestines are beyond all praise."
The genuine have signature of "Eisner & Mendelson Co., Agents, New York," upon the bottle.

NEW ADVERTISEMENTS.
JACKSONS'
NOT A GENTLE SPRING.
NOT so far as we can see is this kind of weather to be called gentle spring, but the weather, like everything else, will settle some-time soon.
A few days more and spring, with all its beauty, will be upon us. You don't have to look out for spring styles—we've looked out for them for you, and we've done it with our eyes wide open.



GENTLE-men, ours is the line of clothing you want to see to form an idea of what fashionable, well-made, form-fitting clothing really is. Our own tailors have been at work on them, and if we don't know what you want, it's ab: time we did.
SPRING Suits, Spring Overcoats, Spring Hats and Furnishings are all here. Now is your time to make your selections. Above all things, let us advise you to look at our line of suitings from \$10 to \$15, and at our selection of Spring Overcoats at from \$8 to \$12. Don't fail to see them.

PENNSYLVANIA RAILROAD.
SCHEDULE IN EFFECT DECEMBER 1, 1891.
Trains will leave Union Station, Pittsburgh, as follows (Eastern Standard Time):
Pittsburgh Limited (Leaves Eastward)
Pittsburgh Limited (Leaves Westward)
Keynote Express daily at 11:30 a. m., arriving at Harrisburg 5:30 a. m., Philadelphia 11:30 a. m., Baltimore 4:00 p. m., Washington 6:30 p. m.

BALTIMORE AND OHIO RAILROAD.
Schedule in effect Dec. 20, 1891. Eastern Standard Time.
For Washington, D. C.
For New York, N. Y.
For Philadelphia, Pa.

SPECIAL TELEGRAM TO THE DISPATCH.
HUNTINGDON, March 24.—The Reformatory managers had their first real scare this morning. Robert Bryan, a Philadelphia inmate, during his examination brought tears to the eyes of the committee by his heartrending recital of the personal abuse he had received at the hands of the officers. Consternation fell upon Attorney Orlandy, and Senator Osbourn smiled even through his tears. Chairman Scott positively held his breath from astonishment.

Young Bryan related how he had been kicked and beaten by the officers and guards, and at present bore the marks and scars of the wounds he had received. Dr. McLeod, of the Investigating Board, suggested that the scars should be examined by the committee.
After some hesitancy Bryan consented, and when disrobing himself the suspense on both sides was oppressive. The climax was reached, however, positively after the most exacting examination not a single scar or mark of any description was found. The pale faced members of the Board of Managers thereupon regained their serenity and Bryan was led away to his cell by Chief Warden Scott's hawk-eyed committee.

Dr. P. Miller, the Reformatory physician, occupied the committee's entire attention at this morning's session. The numerous cases cited by Senator Osbourn wherein it was alleged mental impairment had resulted to inmates by rough treatment and confinement, Dr. Miller strenuously denied. The doctor explained that some of the boys admitted were not of brightest intellect, and those who show mental retrogression being largely of the latter class.

Some of the cases were those of Harry Anderson, Joseph Zurita, Charles Haskinson, James McGinnis, Harry Kane and Samuel Levi, of Philadelphia. William D. McKinnon, who died recently in Philadelphia, the doctor testified, had contracted consumption partly through heredity and partly through his personal habits. When ill he had never been required to work. The doctor denied that confinement in the reformatory hastened his death. Harry Miller or James McGinnis, who died in the institution. Dr. Miller could recall no instance where a prisoner has derived physical injury through brutal treatment or inattention.

Denied that He Abused Boys.
The first witness for the defense, J. H. Lang, the steward of the ship, testified that he had abused Dutton, who had complained of being kicked in the stomach.
Moral Instructor Lykens testified that a majority of the boys make rapid progress in their studies. Each cell is provided with a Bible, hymn book and Catholic prayer book and free access to the large library.

Deputy Superintendent George A. Smith testified that he had never but in one instance, that of Jacob Johnston, used the blackjacks, which he always carries for self-protection. Johnston tried to cut Smith with a knife. He was then chained in his cell as a general protection. The chain seven feet long is employed only in extreme cases. Johnston frequently had the chain put on at his own request, as he desired to pose as a tough. Smith denied ever striking an inmate with his fist as a method of punishment.
McClain, who died in the institution, had the steward of his position on the night of his escape brought on the consumption. Six sharp dirk knives and an iron bar were produced by the deputy, which he had taken from the incorrigibles.

Knives Taken From the Inmates.
Larkin Johnston, Stiner, Levi and John Clark had detained upon an inspection. These knives had been secured from the chair shop. No other officer than Deputy Smith carries a blackjack or revolver. In all about 40 knives had been taken from the inmates. Some were table knives, which he always carries for self-protection to a point by rubbing on the concrete cell floor.
The letters against the deputy which the riotous inmates had interchanged in planning for the insurrection were produced. On cross examination, Deputy Smith denied emphatically that he had ever employed a blackjack or his fist as a means of punishment, as alleged in the affidavits of John Canlan, Jacob Johnston, William Woods and Henry Albers.

In reply to Mr. Ryan, of the Board of Charities, Deputy Smith was emphatic in his declaration that the total abolition of corporal punishment in the reformatory would probably defeat the aims and purposes of the institution.
Major McClaughy, formerly General Superintendent, testified that he had never struck William Dickerson, as alleged, and in one instance only did he ever strike an inmate with his fist. This was William George, who attacked the Superintendent in Deputy Smith's office.
"I then struck him," said Major McClaughy, "in self-defense." The Major supported his testimony with official proofs taken from the reformatory record book of punishment.

Major Petriken appeared before the committee this afternoon, but he acknowledged that he could offer no personal evidence in support of his charges against Messrs. McClaughy and Jennings.

INDIANA DEMANDS CLEVELAND.
Irish Democrats Become Enthusiastic at an Indorsement of the Ex-President.
INDIANAPOLIS, March 24.—A great political sensation was caused yesterday by a meeting of the General James Shields Club, of this city, at Masonic Hall. The club is the Irish-American Democratic organization of the city and includes in its membership practically all of the leaders of the Irish Democrats. The meeting was arranged in honor of the Hon. John G. Shanklin, ex-Secretary of State, and a leading candidate for Governor on the Democratic ticket.

The orator of the evening was Mr. Shanklin, and it was his utterances and the subsequent demonstration that created the sensation. Mr. Shanklin launched immediately into a discussion of national politics. He said it was immaterial who was nominated for Governor so that the right nomination be made for President. The situation demanded the nomination of Cleveland. He said that 90 per cent of the Democrats of Indiana demanded that nomination, and if the party desired or expected to achieve victory in Indiana next fall it must listen to and obey the voice of the people. The audience was fairly dazed at the boldness of the words.

When the audience got its breath, however, a scene of the wildest enthusiasm occurred, and the cheering occurred for many minutes. Mr. Shanklin immediately went into a discussion of national politics. He said it was immaterial who was nominated for Governor so that the right nomination be made for President. The situation demanded the nomination of Cleveland. He said that 90 per cent of the Democrats of Indiana demanded that nomination, and if the party desired or expected to achieve victory in Indiana next fall it must listen to and obey the voice of the people. The audience was fairly dazed at the boldness of the words.

DING OF LOVE-SICKNESS.
A Young Lady Marries an Old Clergyman to Save His Life.
BALTIMORE, March 24.—[Special.]—The marriage last night of Rev. Dr. J. G. Webster and Miss Bertie M. Skinner is the culmination of a romantic courtship. Dr. Webster was a widower with grown children, one of whom at least is older than his new bride. He is one of the most prominent Methodist ministers in the city, and was a few days ago elected Presiding Elder of the East Baltimore district. Until this event he was pastor of the rich Madison Avenue Church, and while so serving fell in love with Miss Skinner, who is the daughter of a wealthy shipbuilder. The families on both sides opposed the union, and the pressure was too great for Miss Skinner and she broke off the engagement.

This blow to his cherished hopes caused the clergyman to get quite sick. Inquirers were informed that it was overworked nerves, but it threatened to become serious, and his family became anxious for his marriage to be prevented. It was then that Miss Skinner consented to renew the engagement and to an immediate marriage. This worked charms upon the reverend father-in-law, who from his sickbed, was married last night and is now with his wife on a bridal tour.

An Honest Statement.
The following is self explanatory and is but one of many unsolicited testimonials received by the inventor of the "Silver Key" medicine, which hesitatingly pronounce it a first-class article, and consequently a most desirable stimulant for medicinal purposes."
MWP MARK H. LINSOLDS, M. D.

Removals.
Changes of address will be found to-day on the third page, under the above heading.
A Benefit to the Poor.
For the past two years it has been our custom to hold regular Friday Poor Man's sales, and on that day we sell clothing and furniture goods at the cost price of manufacture, and often for less than cost. Our Friday's announcement is watched and waited for by the people of Allegheny county, and we feel proud to be in a position to benefit them. We have now developed some extraordinary values to the poor, and at such low prices as to be within the reach of everybody. Here is the Poor Man's list for to-day:

Men's sack suits, all sizes, at \$2.68
Men's sack and cutaway suits, equal to regular goods at \$6 and \$7, for 3.58
Men's cassimer, chevrot and worsted striped pants, at .68c, 72c 1.15
A lot of boys' pleated suits, sizes 4 to 14, neat patterns, at .82c
A lot of boys' neat cassimer and chevrot suits, stylish and well made .82c
Two lots of men's genuine black chevrot suits, coats are cut in either round or square neck, for 4.28
About 200 dozen men's wool underwear, wear, medium weights, in stripes and plain colors, regular \$1 and \$1.50 goods, go to the poor people for .35c and .39c
Men's sack and cutaway suits, equal to regular goods at \$6 and \$7, for 3.58
Men's cassimer, chevrot and worsted striped pants, at .68c, 72c 1.15
A lot of boys' pleated suits, sizes 4 to 14, neat patterns, at .82c
A lot of boys' neat cassimer and chevrot suits, stylish and well made .82c
Two lots of men's genuine black chevrot suits, coats are cut in either round or square neck, for 4.28
About 200 dozen men's wool underwear, wear, medium weights, in stripes and plain colors, regular \$1 and \$1.50 goods, go to the poor people for .35c and .39c

NOVELTIES IN JACKETS.
NOVELTIES IN CAPES.
NOVELTIES IN WAISTS.
NOVELTIES IN SUITS.
NOVELTIES IN HATS.
NOVELTIES IN GOWN.
At Rosenbaum & Co.
HUCKINS' CELEBRATED SOUPS will be served hot at our store every day this week. Call and taste these delicious soups.
J. A. ROSENBAUM & CO., 901 Liberty St.

Oil Company in Fayette County.
A special to THE DISPATCH from Uniontown says: The Fayette County Oil Company was organized here this evening, with a capital stock of \$100,000. It is the intention of the company to drill for oil at Mason-town, this county. Among those interested are Colonel J. M. Reid, of Connellsville, Shreveport, La.; J. E. Bell, of Shreveport, La.; J. McFarland, proprietor of the Hotel Lafayette of this place; John C. and Dr. W. H. of Westmoreland county; and Dr. A. Boyd, Esq., President; John C. Neff, Vice President; J. E. Bell, Secretary; Dr. G. W. Neff, Treasurer; Directors, J. J. McFarland, George A. McCormick, Noble McCormick, J. E. Bell, Dr. W. A. Shoemaker, W. J. Sangston. The company has applied for a charter and will begin operations at once.

The production of the field was 25,000 yesterday, 1,000 less than the day before. The hourly gauges were as follows: Matthews' No. 3, 30; Jennings, Guffey & Co.'s Nos. 1 and 2, 30; Devonian Oil Company's Nos. 1 and 2, 30; Oakdale Oil Company's Nos. 2 and 3, 30; Baldwin, 30; Forest Oil Company's No. 1, 30; W. H. Wright, 45; J. M. Stewart, 65; J. M. Guffey & Co.'s Nos. 1, 2, 3, 4, 5, 6, 7, 8, 9, 10, 11, 12, 13, 14, 15, 16, 17, 18, 19, 20; McCullen & Co.'s No. 1, 2, 3, 4, 5, 6, 7, 8, 9, 10, 11, 12, 13, 14, 15, 16, 17, 18, 19, 20; stock in field, 57,000.

YESTERDAY'S MARKET FEATURES.
The opening was weak, but a bulge soon commenced which sent the price up nearly 2 cents. The cheapness of the commodity interested outsiders, who sent in buying orders. Trading was better than usual. The flatness of the market was the feature of the day. The opening was 53 1/2c, highest and closing 54c, lowest 53c. Daily average runs 73,200; daily average runs were 35,000; shipments, 19,201; Buckeye runs, 40,304; shipments, 76,818; Southern Pipe Line shipments, 4,228; N. K. Fairbank & Co. shipments, 2,218; Macksburg runs, 5,000; shipments, 2,218.

WORTH A GUINEA A DOX.
She Never Laughs.
And no wonder! She's all out of order inside! She's got Impaired Digestion, Disordered Liver and a Sick Stomach.
BEECHAM'S PILLS act like magic on all the vital organs, and restore harmony to the entire system.
Of all druggists. Price 25c a box. Sold by J. C. Benson & Co., 901 Liberty St., Pittsburgh.

University Extension is good, but Kitchen Extension is better. Wider knowledge of better cooking processes means better health and comfort for everybody. Science can never do us better service than by the multiplication of the cooking schools which make healthful means and methods available for even the most modest home.

COTTOLENE
The vegetable substitute for lard, is science's latest gift to the kitchens of the world. Every woman who has ever cooked a meal, knows that lard is disagreeable in use and unhealthy in its effects.
Cottolene is a most satisfactory substitute—clean, delicate and far more economical. At your grocers.
N. K. FAIRBANK & CO., CHICAGO, and 138 N. Delaware Ave., Phila.

After 19 Years of Trial, ELAINE!
FAMILY SAFEGUARD OIL, is conceded to be the Best and Safest Oil Known.
ELAINE! NEVER VARIES IN QUALITY. Cannot be Exploited.
It is the very highest grade of refined petroleum, from which, in the process of manufacture, every impurity has been eliminated.
Elaine is free from benzine and paraffine; it will never chill in the coldest temperature known on this continent.
In color, Elaine is spring-water white, and its "fire test" is so high as to make its absolute safety as any illuminant known.
Having no disagreeable odor, Elaine is a pleasant oil for family use.
Can be Burned in Any Petroleum Lamp. A POSITIVE PROTECTION FROM LAMP EXPLOSIONS. MAKES THE SAFEST AND BEST LIGHT KNOWN.
ELAINE! The Family Safeguard.
100 Million Gallons ELAINE Sold in 18 Years From 1873 to 1892. Elaine cannot be improved upon.
WARDEN & OXNARD, MANUFACTURERS, PITTSBURGH PA.

RESORT HOTELS.
HOTEL RATES AND CIRCULARS.
May Be Obtained at THE DISPATCH'S Business Office, Smithfield and Diamond, mh18

HOTEL WELLINGTON.
Ocean End of Kentucky avenue, Atlantic City, N. J.
M. A. & H. S. MILLNER.
Circulars at Dispatch office. fe27-30

THE IRVINGTON,
On the Beach. Improved by the addition of music and billiard halls. Elevator, Sun parlors. Filtered water. Service first-class. mh25-26
CHAMBERS & HOPKES.

THE CHALFONTE, ATLANTIC CITY.
Directly on the Beach. Sea water baths in house. Opens January 30, 1892.
JAS. S. ROBERTS & SONS.

THE HOTEL STICKNEY, ATLANTIC CITY, N. J., one hundred feet from ocean. Kentucky ave.; steam heated, elevator, billiard, sun parlors, etc. \$2 to \$20 per day; \$2 to \$12 per week. L. V. STICKNEY. mh1-25

THE SEASIDE.
All conveniences, including sea water, baths in the house and covered walk to the beach. fe25-26
CHARLES EVANS.

THE WAVERLY, ATLANTIC CITY, N. J. Opens Feb. 1. Under new management. Comfortable steam heat, sun parlors and excellent table service.
JAS. 128

RIGGS HOUSE, WASHINGTON, D. C.
Reopened. Under new management; refurnished and redecorated in first-class style; table best in the city.
G. DEWITT, Proprietor. fe25-30-mw

STURTEVANT HOUSE, NEW YORK.
American plan \$2.50 to \$3.50 per day. European plan \$1.00 per day upward.
THE STURTEVANT HOUSE is the most central of the city; near all elevated roads, street cars, hotels, places of amusement and large retail stores. All the comforts of home with the additional conveniences of the metropolis is offered our guests.
THE STURTEVANT HOUSE, Broadway, 28th and 29th Sts., New York, N.Y. mh1-25-mw

From Pittsburgh Union Station.
Pennsylvania Lines.
Trains Run by Central Time.
Southwest System—Pan Handle Route
DEPART for Columbus, Cincinnati, Indianapolis, St. Louis, Chicago, St. Paul, Minneapolis, St. Paul, N. Y., Wash., Balt., Phila., Harrisburg, etc., as follows:
DEPART for Wheeling, 7:00 a. m., 11:25 a. m., 1:25 p. m., 4:00 p. m., 6:00 p. m., 8:00 p. m.
DEPART for New Castle, Jamestown, Youngstown and Niles, 9:45 a. m. Arrive from same points: 11:30 a. m., 1:30 p. m., 4:00 p. m., 6:00 p. m., 8:00 p. m.

Northwest System—Four Wayne Route
DEPART for Chicago, points intermediate and beyond: 11:30 a. m., 1:30 p. m., 4:00 p. m., 6:00 p. m., 8:00 p. m.
DEPART for Cleveland, points intermediate and beyond: 11:30 a. m., 1:30 p. m., 4:00 p. m., 6:00 p. m., 8:00 p. m.
DEPART for Detroit, points intermediate and beyond: 11:30 a. m., 1:30 p. m., 4:00 p. m., 6:00 p. m., 8:00 p. m.

From Pittsburgh Union Station.
Pennsylvania Lines.
Trains Run by Central Time.
Southwest System—Pan Handle Route
DEPART for Columbus, Cincinnati, Indianapolis, St. Louis, Chicago, St. Paul, Minneapolis, St. Paul, N. Y., Wash., Balt., Phila., Harrisburg, etc., as follows:
DEPART for Wheeling, 7:00 a. m., 11:25 a. m., 1:25 p. m., 4:00 p. m., 6:00 p. m., 8:00 p. m.
DEPART for New Castle, Jamestown, Youngstown and Niles, 9:45 a. m. Arrive from same points: 11:30 a. m., 1:30 p. m., 4:00 p. m., 6:00 p. m., 8:00 p. m.

Northwest System—Four Wayne Route
DEPART for Chicago, points intermediate and beyond: 11:30 a. m., 1:30 p. m., 4:00 p. m., 6:00 p. m., 8:00 p. m.
DEPART for Cleveland, points intermediate and beyond: 11:30 a. m., 1:30 p. m., 4:00 p. m., 6:00 p. m., 8:00 p. m.
DEPART for Detroit, points intermediate and beyond: 11:30 a. m., 1:30 p. m., 4:00 p. m., 6:00 p. m., 8:00 p. m.

From Pittsburgh Union Station.
Pennsylvania Lines.
Trains Run by Central Time.
Southwest System—Pan Handle Route
DEPART for Columbus, Cincinnati, Indianapolis, St. Louis, Chicago, St. Paul, Minneapolis, St. Paul, N. Y., Wash., Balt., Phila., Harrisburg, etc., as follows:
DEPART for Wheeling, 7:00 a. m., 11:25 a. m., 1:25 p. m., 4:00 p. m., 6:00 p. m., 8:00 p. m.
DEPART for New Castle, Jamestown, Youngstown and Niles, 9:45 a. m. Arrive from same points: 11:30 a. m., 1:30 p. m., 4:00 p. m., 6:00 p. m., 8:00 p. m.

Northwest System—Four Wayne Route
DEPART for Chicago, points intermediate and beyond: 11:30 a. m., 1:30 p. m., 4:00 p. m., 6:00 p. m., 8:00 p. m.
DEPART for Cleveland, points intermediate and beyond: 11:30 a. m., 1:30 p. m., 4:00 p. m., 6:00 p. m., 8:00 p. m.
DEPART for Detroit, points intermediate and beyond: 11:30 a. m., 1:30 p. m., 4:00 p. m., 6:00 p. m., 8:00 p. m.

From Pittsburgh Union Station.
Pennsylvania Lines.
Trains Run by Central Time.
Southwest System—Pan Handle Route
DEPART for Columbus, Cincinnati, Indianapolis, St. Louis, Chicago, St. Paul, Minneapolis, St. Paul, N. Y., Wash., Balt., Phila., Harrisburg, etc., as follows:
DEPART for Wheeling, 7:00 a. m., 11:25 a. m., 1:25 p. m., 4:00 p. m., 6:00 p. m., 8:00 p. m.
DEPART for New Castle, Jamestown, Youngstown and Niles, 9:45 a. m. Arrive from same points: 11:30 a. m., 1:30 p. m., 4:00 p. m., 6:00 p. m., 8:00 p. m.

Northwest System—Four Wayne Route
DEPART for Chicago, points intermediate and beyond: 11:30 a. m., 1:30 p. m., 4:00 p. m., 6:00 p. m., 8:00 p. m.
DEPART for Cleveland, points intermediate and beyond: 11:30 a. m., 1:30 p. m., 4:00 p. m., 6:00 p. m., 8:00 p. m.
DEPART for Detroit, points intermediate and beyond: 11:30 a. m., 1:30 p. m., 4:00 p. m., 6:00 p. m., 8:00 p. m.

From Pittsburgh Union Station.
Pennsylvania Lines.
Trains Run by Central Time.
Southwest System—Pan Handle Route
DEPART for Columbus, Cincinnati, Indianapolis, St. Louis, Chicago, St. Paul, Minneapolis, St. Paul, N. Y., Wash., Balt., Phila., Harrisburg, etc., as follows:
DEPART for Wheeling, 7:00 a. m., 11:25 a. m., 1:25 p. m., 4:00 p. m., 6:00 p. m., 8:00 p. m.
DEPART for New Castle, Jamestown, Youngstown and Niles, 9:45 a. m. Arrive from same points: 11:30 a. m., 1:30 p. m., 4:00 p. m., 6:00 p. m., 8:00 p. m.

From Pittsburgh Union Station.
Pennsylvania Lines.
Trains Run by Central Time.
Southwest System—Pan Handle Route
DEPART for Columbus, Cincinnati, Indianapolis, St. Louis, Chicago, St. Paul, Minneapolis, St. Paul, N. Y., Wash., Balt., Phila., Harrisburg, etc., as follows:
DEPART for Wheeling, 7:00 a. m., 11:25 a. m., 1:25 p. m., 4:00 p. m., 6:00 p. m., 8:00 p. m.
DEPART for New Castle, Jamestown, Youngstown and Niles, 9:45 a. m. Arrive from same points: 11:30 a. m., 1:30 p. m., 4:00 p. m., 6:00 p. m., 8:00 p. m.

Northwest System—Four Wayne Route
DEPART for Chicago, points intermediate and beyond: 11:30 a. m., 1:30 p. m., 4:00 p. m., 6:00 p. m., 8:00 p. m.
DEPART for Cleveland, points intermediate and beyond: 11:30 a. m., 1:30 p. m., 4:00 p. m., 6:00 p. m., 8:00 p. m.
DEPART for Detroit, points intermediate and beyond: 11:30 a. m., 1:30 p. m., 4:00 p. m., 6:00 p. m., 8:00 p. m.

From Pittsburgh Union Station.
Pennsylvania Lines.
Trains Run by Central Time.
Southwest System—Pan Handle Route
DEPART for Columbus, Cincinnati, Indianapolis, St. Louis, Chicago, St. Paul, Minneapolis, St. Paul, N. Y., Wash., Balt., Phila., Harrisburg, etc., as follows:
DEPART for Wheeling, 7:00 a. m., 11:25 a. m., 1:25 p. m., 4:00 p. m., 6:00 p. m., 8:00 p. m.
DEPART for New Castle, Jamestown, Youngstown and Niles, 9:45 a. m. Arrive from same points: 11:30 a. m., 1:30 p. m., 4:00 p. m., 6:00 p. m., 8:00 p. m.

Northwest System—Four Wayne Route
DEPART for Chicago, points intermediate and beyond: 11:30 a. m., 1:30 p. m., 4:00 p. m., 6:00 p. m., 8:00 p. m.
DEPART for Cleveland, points intermediate and beyond: 11:30 a. m., 1:30 p. m., 4:00 p. m., 6:00 p. m., 8:00 p. m.
DEPART for Detroit, points intermediate and beyond: 11:30 a. m., 1:30 p. m., 4:00 p. m., 6:00 p. m., 8:00 p. m.

From Pittsburgh Union Station.
Pennsylvania Lines.
Trains Run by Central Time.
Southwest System—Pan Handle Route
DEPART for Columbus, Cincinnati, Indianapolis, St. Louis, Chicago, St. Paul, Minneapolis, St. Paul, N. Y., Wash., Balt., Phila., Harrisburg, etc., as follows:
DEPART for Wheeling, 7:00 a. m., 11:25 a. m., 1:25 p. m., 4:00 p. m., 6:00 p. m., 8:00 p. m.
DEPART for New Castle, Jamestown, Youngstown and Niles, 9:45 a. m. Arrive from same points: 11:30 a. m., 1:30 p. m., 4:00 p. m., 6:00 p. m., 8:00 p. m.

Northwest System—Four Wayne Route
DEPART for Chicago, points intermediate and beyond: 11:30 a. m., 1:30 p. m., 4:00 p. m., 6:00 p. m., 8:00 p. m.
DEPART for Cleveland, points intermediate and beyond: 11:30 a. m., 1:30 p. m., 4:00 p. m., 6:00 p. m., 8:00 p. m.
DEPART for Detroit, points intermediate and beyond: 11:30 a. m., 1:30 p. m., 4:00 p. m., 6:00 p. m., 8:00 p. m.

From Pittsburgh Union Station.
Pennsylvania Lines.
Trains Run by Central Time.
Southwest System—Pan Handle Route
DEPART for Columbus, Cincinnati, Indianapolis, St. Louis, Chicago, St. Paul, Minneapolis, St. Paul, N. Y., Wash., Balt., Phila., Harrisburg, etc., as follows:
DEPART for Wheeling, 7:00 a. m., 11:25 a. m., 1:25 p. m., 4:00 p. m., 6:00 p. m., 8:00 p. m.
DEPART for New Castle, Jamestown, Youngstown and Niles, 9:45 a. m. Arrive from same points: 11:30 a. m., 1:30 p. m., 4:00 p. m., 6:00 p. m., 8:00 p. m.

Northwest System—Four Wayne Route
DEPART for Chicago, points intermediate and beyond: 11:30 a. m., 1:30 p. m., 4:00 p. m., 6:00 p. m., 8:00 p. m.
DEPART for Cleveland, points intermediate and beyond: 11:30 a. m., 1:30 p. m., 4:00 p. m., 6:00 p. m., 8:00 p. m.
DEPART for Detroit, points intermediate and beyond: 11:30 a. m., 1:30 p. m., 4:00 p. m., 6:00 p. m., 8:00 p. m.

From Pittsburgh Union Station.
Pennsylvania Lines.
Trains Run by Central Time.
Southwest System—Pan Handle Route
DEPART for Columbus, Cincinnati, Indianapolis, St. Louis, Chicago, St. Paul, Minneapolis, St. Paul, N. Y., Wash., Balt., Phila., Harrisburg, etc., as follows:
DEPART for Wheeling, 7:00 a. m., 11:25 a. m., 1:25 p. m., 4:00 p. m., 6:00 p. m., 8:00 p. m.
DEPART for New Castle, Jamestown, Youngstown and Niles, 9:45 a. m. Arrive from same points: 11:30 a. m., 1:30 p. m., 4:00 p. m., 6:00 p. m., 8:00 p. m.

From Pittsburgh Union Station.
Pennsylvania Lines.
Trains Run by Central Time.
Southwest System—Pan Handle Route
DEPART for Columbus, Cincinnati, Indianapolis, St. Louis, Chicago, St. Paul, Minneapolis, St. Paul, N. Y., Wash., Balt., Phila., Harrisburg, etc., as follows:
DEPART for Wheeling, 7:00 a. m., 11:25 a. m., 1:25 p. m., 4:00 p. m., 6:00 p. m., 8:00 p. m.
DEPART for New Castle, Jamestown, Youngstown and Niles, 9:45 a. m. Arrive from same points: 11:30 a. m., 1:30 p. m., 4:00 p. m., 6:00 p. m., 8:00 p. m.