

THE MOVABLE DAM

To Be the Chief Factor in the Improvement of the Mississippi.

IT IS A FRENCH INVENTION, But Will Have to Be Improved for Use in Our Great Rivers.

A DESIGN MASSIVE, BUT SIMPLE, Which Will Control the Water by Opposing Weight to Weight.

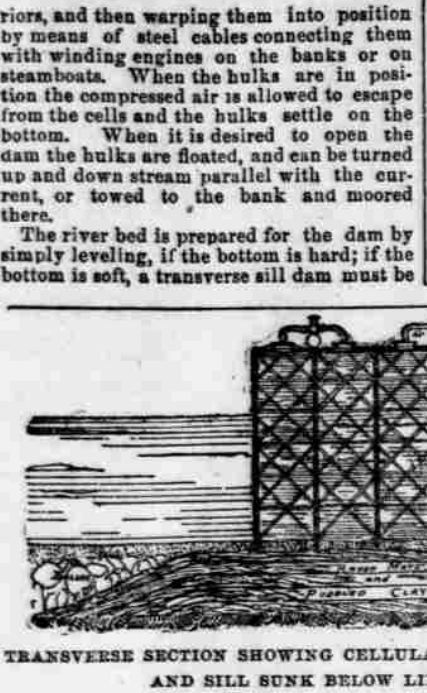
THE GREAT BENEFITS SURE TO RESULT provided, of masonry, concrete, timber, or what is probably best of mixed brush matting and clay.

When it is desired to open the dam the hulks are floated, and can be turned up and down stream parallel with the current or towed to the bank and moored there.

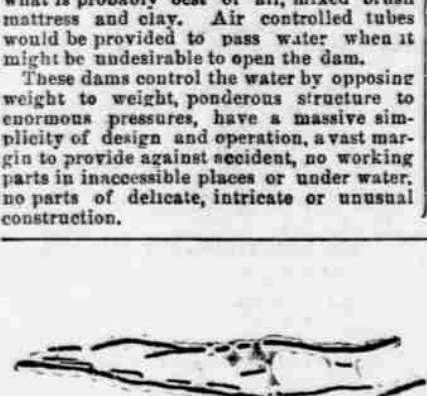
The river bed is prepared for the dam by simply leveling, if the bottom is hard; if the bottom is soft, a transverse sill dam must be

at Columbus on December 21, the maximum discharge being 1,190,000 cubic feet per second. The St. Francis river was backed up, and contributed nothing.

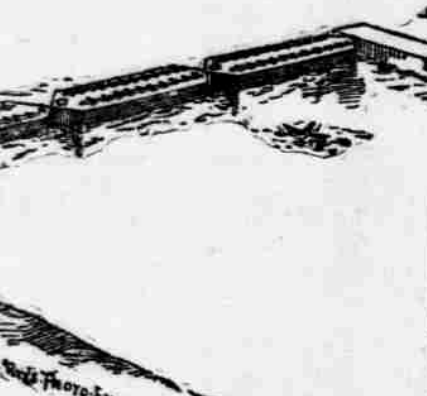
At Yazoo, the river, according to accurate data, it received 45,000 cubic feet per second more. At the top of the flood at Natchez, which was 8.3 feet below high water, 1850, the discharge then should have been 1,190,000 plus 100,000 plus 45,000 equals 1,335,000 cubic feet per second.



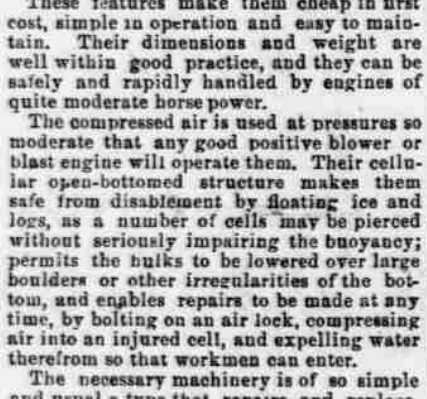
TRANSVERSE SECTION SHOWING CELLULAR, OPEN-BOTTOMED STRUCTURE OF DAM AND SILL SUNK BELOW LIMIT OF SCOURING ACTION.



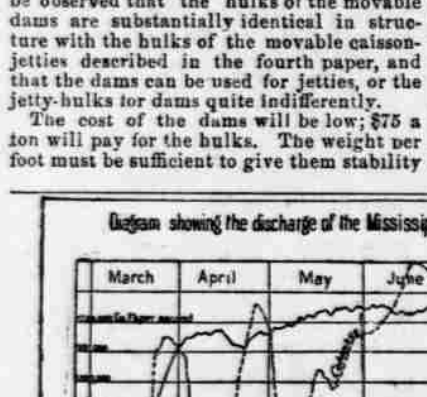
SECTION SHOWING THE DAM AND SILL SUNK BELOW LIMIT OF SCOURING ACTION.



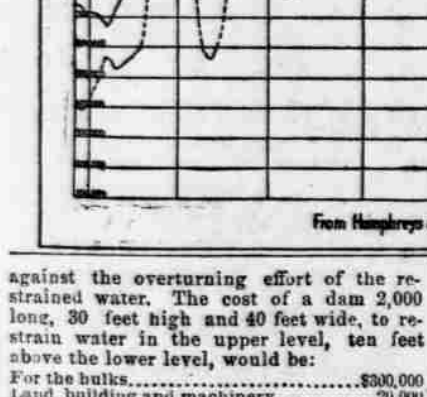
SECTION SHOWING THE DAM AND SILL SUNK BELOW LIMIT OF SCOURING ACTION.



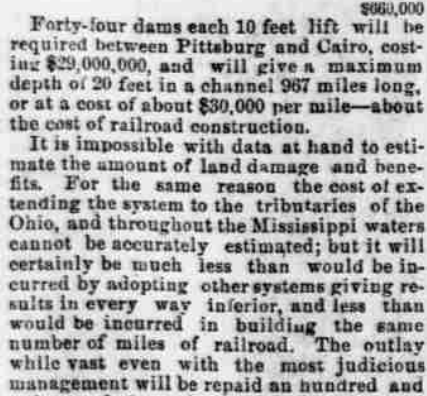
SECTION SHOWING THE DAM AND SILL SUNK BELOW LIMIT OF SCOURING ACTION.



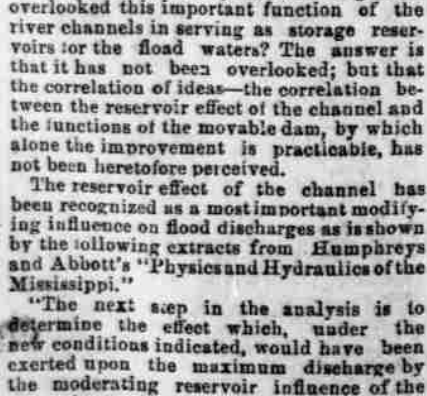
SECTION SHOWING THE DAM AND SILL SUNK BELOW LIMIT OF SCOURING ACTION.



SECTION SHOWING THE DAM AND SILL SUNK BELOW LIMIT OF SCOURING ACTION.



SECTION SHOWING THE DAM AND SILL SUNK BELOW LIMIT OF SCOURING ACTION.



SECTION SHOWING THE DAM AND SILL SUNK BELOW LIMIT OF SCOURING ACTION.

PRIDE OF THE STATE

To Be Properly Upheld at the World's Fair by the Legislature.

PROSPECTS OF AN APPROPRIATION. Secretary Brewer Discourses Entertainingly on the Subject.

WHAT WAS DONE FOR THE CENTENNIAL. Eben Brewer, of the Canal Commission, who is also Assistant Secretary of the National World's Fair Commission at Chicago.

When Pennsylvania held the first international exhibition of America, the Centennial, no less than 26 States and Territories made liberal appropriations in aid of their exhibits at Philadelphia.

What Was Done for the Centennial. "I was looking over some reports of the Centennial a day or two ago, and I noted down the amounts of the different appropriations made by States and Territories at that time.

Some States Now in Better Shape. "The Centennial occurred so shortly after the close of the war that a great many of the leading Southern States were not in a financial condition to give any money.

HOW TO Dress the Baby, by the Countess Annie de Montigny. THE DISPATCH to-morrow will publish a select matter for women and young folk.

A COUNTERFEITING GANG CAPTURED. Some Are Taken in Detroit and Some on Canadian Soil.

Continued on Tenth Page.

TO YOUNG CITIZENS.

The First of a Series of Letters Written by Prominent Men.

INFLUENCE OF AMERICAN IDEAS. And Institutions Upon the Other Nations of the World.

OUR GOVERNMENT A POTENT AGENCY. (WRITTEN FOR THE DISPATCH.) The young citizen of the Republic should study carefully the reflex influence of our institutions on other nations and peoples.

Popularity of Franklin in France. This reasoning, half-silent and half-avowed, was the secret of the popularity of Franklin at the French Court.

The Progress of Republicanism. Still more strongly has the same influence spread among the other governments of the American continent.

Our other American institutions have in like manner diffused their influence over the world.

THE REPORT WAS TWISTED. Agent Berryman Secures a Verdict of Several Hundred Dollars Against a Plumber.

GOULD'S GRIP ON THE ALCHISON. NEW YORK, Jan. 9.—An authorized statement was given out this afternoon to the effect that Jay Gould had not obtained control of the Alchison Railroad by purchase, as has been reported.

KATE ELLWOOD.

WHO WILL WIN HER? BY G. W. BROWN.

Solomon Ellwood, or "Uncle Sol," as he was commonly called, was an eccentric old gentleman. For 23 years he had done business in Boston, living, except in winter, nine miles out in the little town of S—.

Uncle Sol was nearly 70, and he realized that he was growing old, that the evening of life was fast approaching. He often sighed for the retired comforts of a home, but who should take his place in the firm was a question often asked, but never satisfactorily answered.

For several years Uncle Sol had devoted much time and study to the game of draughts. This was one of his eccentricities. He was a mathematician and found in this deep game sufficient ground for philosophizing.

Uncle Sol breathed easier and fixed his eye on 27. Forest saw that it would soon be his turn to play with a man less, and the black king advanced another square.

"You are prompt, sir," said Uncle Sol, "and your progress has been one of my principles ever since I looked at you. The only objection she had ever experienced was for her mother and brother. She looked up to him with a reverential respect, and never questioned his advice in relation to her own welfare."

"You are prompt, sir," said Uncle Sol, "and your progress has been one of my principles ever since I looked at you. The only objection she had ever experienced was for her mother and brother. She looked up to him with a reverential respect, and never questioned his advice in relation to her own welfare."

"You are prompt, sir," said Uncle Sol, "and your progress has been one of my principles ever since I looked at you. The only objection she had ever experienced was for her mother and brother. She looked up to him with a reverential respect, and never questioned his advice in relation to her own welfare."

Continued on Tenth Page.

THE MOVABLE DAM

To Be the Chief Factor in the Improvement of the Mississippi.

IT IS A FRENCH INVENTION, But Will Have to Be Improved for Use in Our Great Rivers.

A DESIGN MASSIVE, BUT SIMPLE, Which Will Control the Water by Opposing Weight to Weight.

THE GREAT BENEFITS SURE TO RESULT provided, of masonry, concrete, timber, or what is probably best of mixed brush matting and clay.

When it is desired to open the dam the hulks are floated, and can be turned up and down stream parallel with the current or towed to the bank and moored there.

The river bed is prepared for the dam by simply leveling, if the bottom is hard; if the bottom is soft, a transverse sill dam must be

at Columbus on December 21, the maximum discharge being 1,190,000 cubic feet per second. The St. Francis river was backed up, and contributed nothing.

At Yazoo, the river, according to accurate data, it received 45,000 cubic feet per second more. At the top of the flood at Natchez, which was 8.3 feet below high water, 1850, the discharge then should have been 1,190,000 plus 100,000 plus 45,000 equals 1,335,000 cubic feet per second.

Continued on Tenth Page.

PRIDE OF THE STATE

To Be Properly Upheld at the World's Fair by the Legislature.

PROSPECTS OF AN APPROPRIATION. Secretary Brewer Discourses Entertainingly on the Subject.

WHAT WAS DONE FOR THE CENTENNIAL. Eben Brewer, of the Canal Commission, who is also Assistant Secretary of the National World's Fair Commission at Chicago.

When Pennsylvania held the first international exhibition of America, the Centennial, no less than 26 States and Territories made liberal appropriations in aid of their exhibits at Philadelphia.

What Was Done for the Centennial. "I was looking over some reports of the Centennial a day or two ago, and I noted down the amounts of the different appropriations made by States and Territories at that time.

Some States Now in Better Shape. "The Centennial occurred so shortly after the close of the war that a great many of the leading Southern States were not in a financial condition to give any money.

HOW TO Dress the Baby, by the Countess Annie de Montigny. THE DISPATCH to-morrow will publish a select matter for women and young folk.

A COUNTERFEITING GANG CAPTURED. Some Are Taken in Detroit and Some on Canadian Soil.

Continued on Tenth Page.

TO YOUNG CITIZENS.

The First of a Series of Letters Written by Prominent Men.

INFLUENCE OF AMERICAN IDEAS. And Institutions Upon the Other Nations of the World.

OUR GOVERNMENT A POTENT AGENCY. (WRITTEN FOR THE DISPATCH.) The young citizen of the Republic should study carefully the reflex influence of our institutions on other nations and peoples.

Popularity of Franklin in France. This reasoning, half-silent and half-avowed, was the secret of the popularity of Franklin at the French Court.

The Progress of Republicanism. Still more strongly has the same influence spread among the other governments of the American continent.

Our other American institutions have in like manner diffused their influence over the world.

THE REPORT WAS TWISTED. Agent Berryman Secures a Verdict of Several Hundred Dollars Against a Plumber.

GOULD'S GRIP ON THE ALCHISON. NEW YORK, Jan. 9.—An authorized statement was given out this afternoon to the effect that Jay Gould had not obtained control of the Alchison Railroad by purchase, as has been reported.

Continued on Tenth Page.

Continued on Tenth Page.