

Read Labels Before You Buy Fabrics

Whether you buy yard goods or a ready-made garment, know the value you are getting for the money you spend. Don't let anyone "sell" you a bargain, look for the label, advises Miss Helen S. Butler, home economics extension representative of Centre County.

In every price range there is a garment or fabric with a label which gives some facts. Look for labels and select only those fabrics which have been tested and labeled as to their care.

Wise buying means buying wearability in fabrics whenever possible. Only the label can tell you about color-fastness, shrinkage, special finishes, and suggested methods for cleaning.

Look for fabrics that are pre-shrunk. Don't run the risk of buying anything that will shrink when washed or dry cleaned. Look for labels which say the fabric is crease-resistant. These finishes are now applied to many cottons, linens and rayons. Fabrics that are closely woven with even weaves shed dirt, stay clean longer and are easy to iron.

Look for special finishes, such as permanent stiffening, water repellent fabrics, materials that do not require ironing, or fabrics which can be wiped clean.

With life demanding more and more machines, it would be a good idea to build some of them to last longer.

Livestock Day To Honor Staff Member

A Livestock Day on Monday, June 18, at The Pennsylvania State College will have a double objective, according to County Agent L. H. Bull, who informs the event is being arranged with the cooperation of the various livestock interests in Pennsylvania, including processors.

They have initiated the day as a valedictory to William B. Connell, head of Livestock extension, whose retirement on June 30 was recently announced. Connell, native of Erie county, has been a member of the college staff as extension specialist since 1918. He is widely known in livestock circles throughout the East and for years has had an intimate knowledge of the livestock program in the State.

An all-day program has been planned, starting at 10 a. m. The morning will be devoted to a display by the College of its livestock herds and flocks, particularly animals added during the last year and a half under a special legislative grant. These include Morgan, Percheron, and Belgian horses; Aberdeen-Angus, Hereford, and Shorthorn beef cattle; Shropshire, Southdown, Hampshire, Cheviot, and Dorset sheep, and six breeds of swine—Poland China, Chester White, Hampshire, Duroc Jersey, Berkshire, and Yorkshire.

A box luncheon will be available at noon. Visiting livestock men will meet at 1 o'clock in the college gymnasium in a formal felicitation to Connell. Dr. Milton S. Eisenhower, president of the College, will pre-

side. Merrill Tait, Stetlerville, is general chairman of the committee representing the livestock interests

of the State. J. N. Robinson, of Mercer, and Towson, Md., is secretary.

H. L. HARPSTER
AUCTIONEER
Prompt Attention Given all Sales
PHONE 3579
PINE GROVE MILLS, PA.

Harold E. Leightley
AUCTIONEER
PROMPT ATTENTION
GIVEN ALL SALES
Phone 16-R-11 Centre Hall

OLIVER FARM MACHINERY

Yes, we have it. Come in and let us show you the newest models of

OLIVER TRACTORS, 66, 77 and 88
OLIVER PLOWS, 2 and 3 bottom
OLIVER HARROWS
OLIVER MANURE SPREADERS
OLIVER COMBINES
SINGLE ROW CORN PICKERS

We also have a full line of Goodrich Tires and DeLaval milking equipment. Open evenings.

Diehl & Yearick
Phone Millheim 26-R-25 or 130-R-4
REBERSBURG, PA.

PUBLIC SALE

THE UNDERSIGNED WILL OFFER AT PUBLIC SALE IN SPRING MILLS ON

Saturday, May 26th

At 1:30 P. M., the following:

REAL ESTATE

8-room frame house with new steam heating plant, bath and light, and large lot. Immediate possession.

Terms of Sale: 25% on day of sale, balance on delivery of deed.

HAROLD H. WALKER
M. R. McCLAIN, Auctioneer

PUBLIC SALE

The undersigned will offer at public sale at his residence, one mile southwest of Jacksonville, on

SATURDAY, MAY 19th
At 12:00 O'clock Noon (DST)

HOUSEHOLD GOODS

One good Majestic cook stove; one good heater; 1 chest of drawers; antique sink; sideboard; glider; Victrola; medicine cabinet; several rocking chairs; a lot of kitchen chairs; dressers; couch; a lot of crocks; jars; bed clothes; mattresses; kitchen cabinet; good table; pictures; carpets; several stands; looking glasses; dishes; some garden tools, and a lot of articles too numerous to mention.

AUGUSTUS FRITZ
ROY OYLER, Auctioneer

Public Sale Extra-Ordinary!
Tuesday, May 22

52 REGISTERED HOLSTEIN CATTLE

All from T. B. Accredited Herds, Bangs Certified, Mostly Calfhood Vaccinated

SELLING AT YOUR PRICE IN FIRST CENTRAL AREA SALE AT HOLLIDAYSBURG, BLAIR CO., PA. at Dell Delight Park.

HOLLIDAYSBURG is on Route 220, 4 miles south of Altoona, Pa. THESE CHOICE ANIMALS WERE PERSONALLY SELECTED BY THE SECRETARY OF THE PENNA. HOLSTEIN ASSO., J. A. FAIRCHILD, Berwick, Pa. with the able assistance of county committees of Blair, Huntingdon, and Centre Counties, from many of the very best herds in Central Penna.

Breeders have cooperated in allowing committee to draft some of their finest that this might truly be a sale extra-ordinary of the finest Registered Holstein cattle ever offered in this locality.

THE MANY CHOICE ANIMALS SELLING INCLUDE:

25 beautiful bred heifers, due in the fall; 12 large, attractive open heifers; 12 last fall heifer calves, nicely-grown, excellent individuals and very promising foundation animals. 4-H and FFA boys and girls will find one here, just right to show and grow. A few fresh and close springing cows.

Daughters of many leading sires of the Pa. Artificial Association feature this innovation sale.

Among the many consigners is the Penna. State College, offering you a heifer of unusually fine breeding and production inheritance.

ATTEND THIS SALE AND PARTICIPATE IN THE BIDDING ON THESE PROFITABLE ANIMALS.

Held Under Cover, Starts at 12:30 DST, Lunch Available Catalogs at ringside.

JOHN E. SMITH, Chairman, Sale Committee, Martinsburg, Pa.
Sales Manager & Auctioneer
R. AUSTIN BACKUS, Mexico, N. Y.

Public Sale

OF VALUABLE REAL ESTATE

Saturday, May 26, 1951

2:00 P. M. — ON THE PREMISES

The undersigned Executor of the last Will and testament of **HARDMAN P. HARRIS**, deceased, will offer at public sale the farm of said decedent situate in Boggs Township, Centre County, Pa., consisting of 195 acres, 144 perches, more or less, more particularly described in deed of John M. Boob, Sheriff, to H. P. Harris, dated September 15, 1934 and recorded in Centre County, Pa., in Sheriff's Deed Book No. 1, page 451.

This sale includes the sand plant and all buildings erected thereon and is subject to any existing leases which will be assigned to the purchaser.

TERMS OF SALE: 25% of the bid in cash when property is knocked down and the remainder upon delivery of deed within 30 days.

JOHN T. HARRIS, Executor
Grayco Apts., Harrisburg, Pa.

HERBERT J. STOVER, Auctioneer

LOVE & WILKINSON, Attorneys for Executor
Bellefonte, Pa.

BIG PUBLIC SALE

THURSDAY, MAY 24

55 HOLSTEIN CATTLE

(45 Registered—10 Grades). T. B. Accredited, Bangs Certified, all under 2 1/2 years, calfhood vaccinated.

6 Miles East of BELLEVILLE, MIFFLIN CO., PA. on Route 76, 2 Miles West of Reedsville and 8 miles northwest of Lewistown

HERD IS WIDELY-KNOWN FOR ITS UNUSUALLY HEAVY PRODUCTION. NOW IN DHIA.

Offering includes 11 cows with 400 lb. fat and up to 562 lb. fat on 2-time milking. Especially good butterfat testers. Many large production records now in progress.

3 daughters and one son of LAUXMONT RAG APPLE AUTOCRAT, leading proven sire of the First Pa. Artificial Breeding Coop.

Daughters of other proven sires in this Association and also a daughter of that famous sire, LAUXMONT ADMIRAL LUCIFER.

SELLING IN THIS COMPLETE DISPERSAL ARE:

- 25 Cows
- 10 Bred Heifers
- 9 Open Heifers
- 9 Heifer Calves
- 2 Bulls of high record ancestry.

A GREAT OPPORTUNITY FOR YOU TO GET EXCELLENT VALUES AND HIGH PRODUCING HOLSTEIN CATTLE. Sale starts at 12:00 Noon, held in big tent — Lunch Available Catalogs at ringside.

CHAS. J. METZ & SONS, Owners, Belleville, Pa.

R. AUSTIN BACKUS, Sales Manager & Auctioneer Mexico, N. Y.

SALE

HOUSEHOLD GOODS

Saturday, May 19, 1951

12:30 P. M.—in Coburn, Pa., in the rear of Donald Reffner's residence.

Heatrola; radio; sideboard; desk; two iron beds with springs; cook stove; oil range; gasoline range; two dining room tables; several stands; one dozen chairs, five of which are planked chairs; 2 rocking chairs; dishes; pans, pots and other utensils; garden tools; canthooks; crosscut saws; spuds; grabs; lard and sausage press; crocks, jars, and many other items too numerous to mention.

TERMS OF SALE—CASH.

A. A. AUMAN, Owner
RAY CARPER, Auctioneer

Field Day To Offer Practical Farm Help

The grassland field day, May 24 at The Pennsylvania State College promises to provide practical help for visiting farmers from Centre county and neighboring counties, according to County Agent L. H. Bull.

Farmers will see experimental plot of grasses and legumes. The showings they will be making at the time may determine choice of strain or variety of one or more species in new seedings. Now in their second year, these plots will be explained by research agronomists of the College who planted them. These scientists will explain the merits of the different plots on the basis of present growth and for the whole two-year period.

These plots will be only one of many points of interest in a program starting at 10 a. m. and continuing until 3:30 p. m. Nearly a score of demonstrations and exhibits have been scheduled in both agriculture and home economics. Men and women are planning to attend. Many of them will bring basket lunches. Light refreshments will be provided on the grounds.

In addition to selection of best adapted varieties, emphasis will be on proper preparation of seedbeds, seeding mixtures suited to individual farm programs, improvement and management of pastures, new and better ways of making grass silage and hay, and the use of silage preservative.

Scientific feeding of forage for its most efficient use in dairy and general livestock rations will be stressed. Modern forage machinery will be in operation. A wood chopper will show how suitable bedding material can be produced from waste wood and brush.

ABC means Aided By Classifieds

Public Sale

OF LIVESTOCK AND FARM IMPLEMENTS

THE UNDERSIGNED WILL OFFER AT PUBLIC SALE, TWO MILES WEST OF JERSEY SHORE ON THE PINE CREEK ROAD, ON

THURSDAY, MARCH 24

BEGINNING AT 12:00 O'CLOCK

AN ACCREDITED HERD

Blood Tested Feb. 2, 1951, Gold Seal No. 3902

Health Charts Furnished

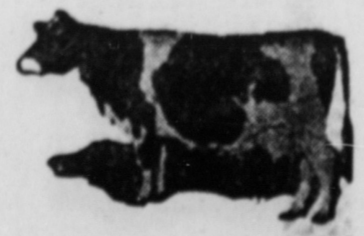
11 COWS

9 HOLSTEINS & 2 GUERNSEYS

5 HOLSTEIN HEIFERS, Vaccinated

Big Guernsey cow, fresh; 2 Holstein cows, calves just sold away; 2 Holsteins to freshen in October; 1 to freshen in December; 1 for January; 2 for June; 2 in August; 2 Holstein heifers bred for fall freshening; 2 Holstein yearling heifers; 1 heifer, 4 months old.

If You Need a Cow, Take a Look at These — They Have Size and Quality



Farm Machinery

New Idea push hay loader; Papek ensilage cutter; International corn binder; Iron Age potato planter; McCormick-Deering milking machine; 3-can milk cooler; milk cans, and many other articles too numerous to mention.

TERMS—CASH.

RAY CARPER, Auctioneer
J. W. Bechdel, Mill Hall, Sales Mgr.

GUY E. CRIST, Owner

Trusses — Crutches
Abdominal Supports
Sacro Iliac Belts

EXPERT FITTING

Parrish Drug Store
BELLEFONTE, PA.

PUBLIC SALE

The undersigned will offer at public sale on the Blair Pletcher farm, one-quarter mile north of Howard, on Route 220, on

SATURDAY, JUNE 2

Beginning at 12:30 p. m. (DST), the following personal property:

LIVESTOCK

5 HOLSTEIN MILK COWS; Holstein heifer; 1 Guernsey; 1 Holstein milking 80 pounds daily.

FARM MACHINERY

Hoosier grain drill; Oliver corn planter; steel wheel wagon; and many other articles not mentioned.

TERMS: CASH.

Nathaniel Pletcher
E. E. HUBLER, Auctioneer

PUBLIC SALE

The undersigned will offer at public sale at his place of business, 136 S. Allegheny street, Bellefonte, on

Wednesday, May 23rd

Beginning at 10:30 a. m., the following personal property:

STORE EQUIPMENT

Counter case, 6 feet by 32 inches; marble base floor case, 8 feet by 42 inches; floor case, 4 feet by 42 inches; two floor cases, 7 feet by 42 inches; large GE refrigerator with glass front; 10-hole ice cream cabinet; Toledo scale, weighs to 10 pounds; Toledo scale, weighs to 6 pounds; candy scale, weighs to 3 pounds; all scales are graduated up to \$1; Burroughs adding machine and stand; 12 reed tables 23 by 48 inches with oak top; 3 reed tables, 30 by 54 inches, with oak top; some reed chairs; Bergman Dixie ice cream fillers, also some pint boxes; steel ice cream cans in sizes of one-half gallon, 1 gallon, 2 gallon, 3 gallon and 5 gallon; 40 pans, 13 1/2 inches wide, 21 inches long and 2 inches deep; 40 pans, 11 inches wide, 21 inches long and 1 1/2 inches deep; 20 pans, 6 inches wide, 20 inches long, 3 1/2 inches deep; 4-section steel cloth cabinet; 3-burner hot plate; some canned goods, preserves, merchandise that's left, and many other articles too numerous to mention.

TERMS: CASH.

H. E. CLEVENSTINE
Formerly the City Bakery

E. M. (Jack) SMITH, Auctioneer
Paul M. Dubbs, clerk

Public Sale

The undersigned administrator of the Daniel Denison estate will offer at public sale at the Denison Garage, 21 W. Maple Street, Philipsburg, Pa., on

WEDNESDAY, MAY 23

Beginning at 10 A. M., the following personal property:

TIRES	TIRES
66—6:00x16 Knobbys	17—6:00x16 6-ply E
17—7:50x20 10-ply	1—6:50x16 6-ply
2—7:50x18 8-ply mud grips	1—7:00x16 6-ply
2—4:40:4:50x21 4-ply	9—7:00x15 6-ply
8—4:75-5:00x19 4-ply	2—6:50x18 6-ply
1—5:25-5:50x17 4-ply	7—7:50x16 8-ply
10—5:25-5:50x18 4-ply	1—7:00x17 8-ply
9—5:50x16 4-ply	2—6:00x20 6-ply
17—6:00x16 6-ply	3—6:50x20 8-ply
6—6:50x15 4-ply	2—7:00x20 10-ply
4—6:50x16 4-ply	3—10:00x20 12-ply
4—7:00x16 4-ply	2—11:00x20 12-ply
1—7:50x15 4-ply	2—11:00x22 12-ply
1—6:50x16 6-ply	2—10:00x22 12-ply

120 innertubes of various sizes for both cars and trucks.

GARAGE EQUIPMENT

Set of carpenter tools; set of service station tools; pipe fittings and plumbing tools; electric motor; 3 large screw jacks; Victor adding machine; filing case; L. C. Smith typewriter; grease gun rack; 4 air hand grease guns; electric cash register; two 50-gallon oil tanks; office safe; 22 2x4's, 16 feet long; some plate glass; lot of second hand doors; large refrigerator; 700 pounds of nails; 192 5-gallon pails of roof coating; 3 hydraulic jacks; lot of motor oil and anti-freeze; 1950 3/4-ton Chevrolet pickup truck; and many other articles not mentioned.

TERMS OF PERSONAL PROPERTY—CASH.

REAL ESTATE

At the same place on

FRIDAY, MAY 25,

beginning at 2 p. m., the following real estate will be offered:

An irregular lot on W. Maple street and Penna. Railroad, having a two-story frame garage and stone foundation erected thereon. Also:

On the premises, Presqueisle street, Philipsburg, the following will be offered at 3 p. m. Friday, May 25:

A 1-story garage and gas station on lot 60x100. This property is on lease to the Sterling Oil Company at \$125 a month.

Terms of Real Estate made known on day of sale.

DAVID L. BAIRD, Administrator
H. L. HARPSTER, Auctioneer

Advertise your farm sale in the Democrat.