

PINE GROVE MILLS

Miss Ella Ripka flitted the past week to her new home on Chestnut street. The Wilbur Sunday family moved from Church street to the apartment on the corner.

PINE GLEN

Church services: Sunday school 10 a. m. No preaching as Rev. Dershem will attend M. E. Conference at Bloomsburg this coming week.

BOALSBURG

Four members from Tussey Rebebekah Lodge No. 66, Boalsburg, attended a district meeting of Rebebekahs at Millheim, Monday evening.

WOODWARD

On Tuesday evening the Bellefonte Evangelical choir with the personnel of their Easter cantata program, assisted by the Woodward Evangelical choir, gave a very impressive service entitled "On the Third Day."

RUSSVILLE

Merrill Watson is all smiles since the stork left him a fine baby boy at his home last Saturday morning.

PORT MATILDA

Mrs. Ann Sankey spent a few days with her daughter in Tyronne. Mr. and Mrs. John Maxwell and family of Wilkensburg, spent the weekend with the latter's parents.

WORLD OF RELIGION

calls upon us and we obey, this principle should be a deep conviction by every American and by every Christian as well.

HOLTS HOLLOW

Frank Johnson and Russell Poorman of Ohio, spent a few days with friends and relatives in this vicinity.

SNOW SHOE

The Ladies Aid of the Presbyterian Church held their monthly meeting at the home of Mrs. Merrill Harnish last Tuesday night.

STATE COLLEGE

Mrs. Sumner Sheets entertained the members of her sewing club at her home on South Burrows street, Tuesday night.

BUSH HOLLOW

Our Sunday school is still in progress each Sunday morning although so many folks from our own community fail to be present.

KENNEDY

Mr. and Mrs. Roy Leathers and sons called Monday p. m. at the home of Milford Lucas.

LITTLE NITTANY

Mr. and Mrs. Boyd Butler and daughter Wava, of Mill Hill, visited at the Margaret Dullen home Sunday.

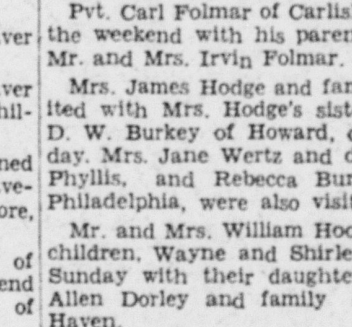
ON THE JOB

Time is precious now! The wise woman no longer submits meekly to periodic pain, cramps and discomfort. She tries Chichesters Pills for carrying on her important work without interruptions.

WHEN WINDS GET ROUGH

A Windstorm Policy Protects You From Financial Loss. See John F. Gray & Son General Insurance Phone 697-J Bellefonte, Pa.

REMEMBER WAKE ISLAND!



3. A sign chalked by a G-E workman on a big machine being built for war. The sign carried this challenge to fellow workers: "Remember Wake Island!"

GENERAL ELECTRIC

General Electric believes that its first duty to a good citizen is to be a good soldier. General Electric Company, Schenectady, N. Y.

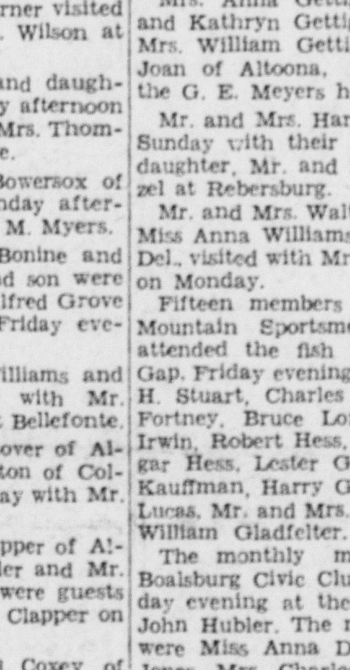
Answers to Modern Etiquette

- 1. Try to cultivate a quiet voice. The more quietly you speak the better attention you will secure. When one lowers his voice it has the tendency to cause people to think that a choice bit is about to issue forth.

Lessons In English

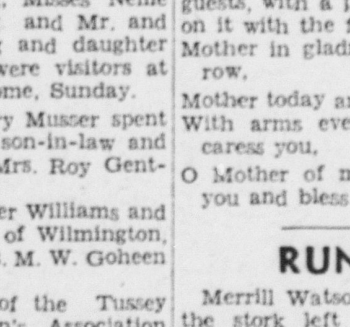
- Words Often Missed: Do not say, "He was converted by that belief." Say, "He was converted to that belief."

Men of War



General Electric men and women—thousands of them! Four typical scenes show the spirit with which they are tackling the grim job of producing for war!

When Winds Get Rough



3. A sign chalked by a G-E workman on a big machine being built for war. The sign carried this challenge to fellow workers: "Remember Wake Island!"

General Electric

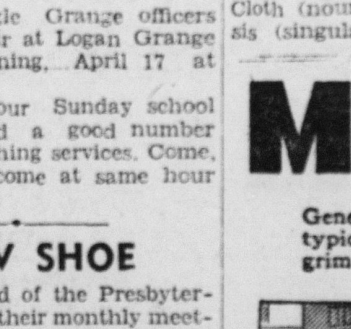
General Electric believes that its first duty to a good citizen is to be a good soldier. General Electric Company, Schenectady, N. Y.

Men of War



General Electric men and women—thousands of them! Four typical scenes show the spirit with which they are tackling the grim job of producing for war!

When Winds Get Rough

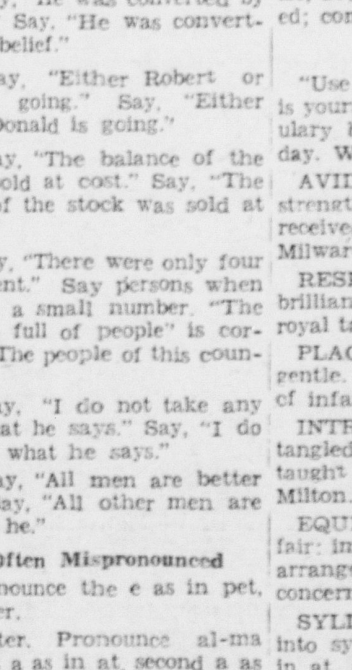


3. A sign chalked by a G-E workman on a big machine being built for war. The sign carried this challenge to fellow workers: "Remember Wake Island!"

General Electric

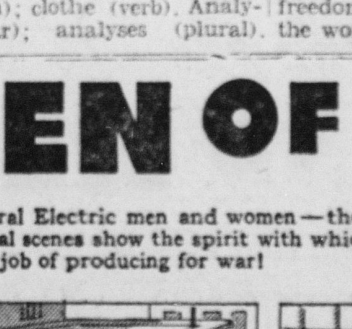
General Electric believes that its first duty to a good citizen is to be a good soldier. General Electric Company, Schenectady, N. Y.

Men of War



General Electric men and women—thousands of them! Four typical scenes show the spirit with which they are tackling the grim job of producing for war!

When Winds Get Rough

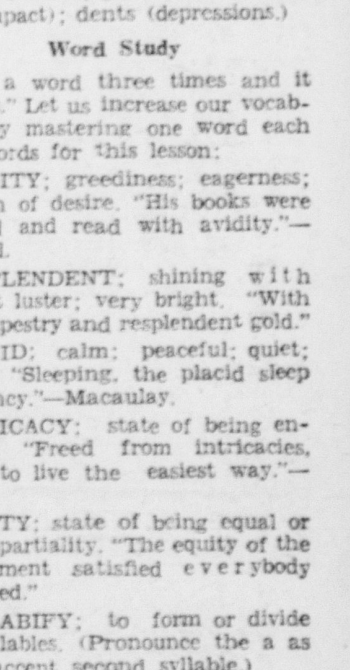


3. A sign chalked by a G-E workman on a big machine being built for war. The sign carried this challenge to fellow workers: "Remember Wake Island!"

General Electric

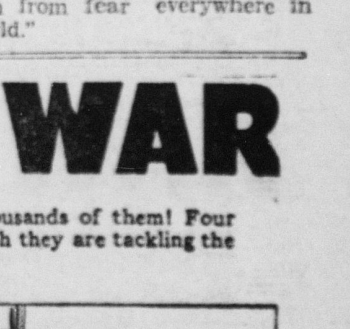
General Electric believes that its first duty to a good citizen is to be a good soldier. General Electric Company, Schenectady, N. Y.

Men of War



General Electric men and women—thousands of them! Four typical scenes show the spirit with which they are tackling the grim job of producing for war!

When Winds Get Rough

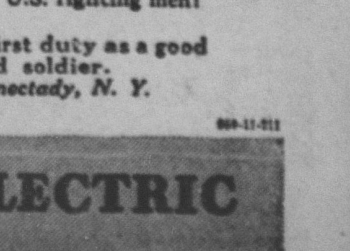


3. A sign chalked by a G-E workman on a big machine being built for war. The sign carried this challenge to fellow workers: "Remember Wake Island!"

General Electric

General Electric believes that its first duty to a good citizen is to be a good soldier. General Electric Company, Schenectady, N. Y.

Men of War



General Electric believes that its first duty to a good citizen is to be a good soldier. General Electric Company, Schenectady, N. Y.