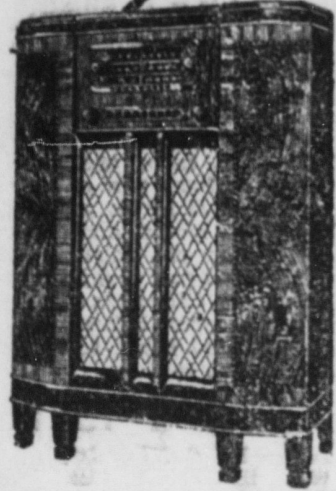


Radio Moving Day

MARCH 29, 1941

Electric Supply Co.



OFFERS YOU

\$15.00 to \$30.00

For Your Old Radio!

Our New 1941 Radios Are Ready To Receive Your Favorite Program On Its New Wave Length!

SEE US TODAY

Electric Supply Co.

Bellefonte 439

State College 2062

Service Helping Employers, Men

(Continued from page one)

States Employment Service and are cooperating in its nation-wide registration of all available workers, so that qualified people can be located quickly when an industry needs them.

In line with the appeal recently issued by the Pennsylvania State Employment Service, Mr. Brown's office is, he said, asking every unemployed worker in Centre county and every worker with a skill needed in defense industry, which he is not now using to register. Mr. Brown listed the occupations to which this applies as:

Aircraft manufacturing, including airplane sheet metal workers, airplane woodworkers, inspectors, and aeronautical engineers.

Shipbuilding, including ship carpenters, loftsmen, boatbuilders, ship fitters, caulkers, and marine machinists.

Machine shops and machinery manufacturing, including machinists, tool makers, lathe operators, die makers, and tool designers.

The Employment Service does not encourage or desire workers who are employed in any of the above industries to register.

"Our office," he continued, "wants to know what workers here in Bellefonte and its vicinity are available now for jobs, or for the training courses being given for defense jobs. We do not want anyone who has a job to give it up. We do not want to dislocate anyone who is using his best skill in his present job. We do want to be in a position to refer to local employers—those in defense industry and others—the kind of workers they need, when they need them."

The nation-wide registration now in progress, Mr. Brown pointed out, will expedite finding qualified workers. The Bellefonte office files requests from local employers with local workers so far as possible. But if no workers with the required qualifications are available in town or within commuting distance, it then sends out a call to neighboring cities to the State headquarters in Harrisburg and, if necessary, to employment offices in nearby States and throughout the nation.

"The Bellefonte office, like other employment offices in all the States," Mr. Brown said, "is not only taking new registrations from workers, but also re-examining its files of workers previously registered. We shall re-interview men and women now registered to find out whether they are immediately available for employment or training.

"Plans for this national registration," he continued, "have been made after careful consideration of the problems now confronting employers and workers. The Office of Production Management and the United States Employment Service have asked the States to cooperate in this effort to determine the number, location, and occupation of those who are fully qualified for immediate or future jobs and to locate those who, with additional training, might fill jobs in expanding defense industries. Here in Centre county I am sure that employers and workers, as well as the Employment Service are prepared to do their part."

Local employers who are cooperating with the Pennsylvania State Employment Service and recruiting their work through the Bellefonte office include, Mr. Brown stated, Titan Metal Manufacturing Company and others.

Open Bids for New Bellefonte School

(Continued from page one)

Earl K. Stock, R. C. Blaney and Newell B. Long was named to meet with the architects to conduct a routine investigation of bids and bidders before the contracts are awarded.

The meeting adjourned to reconvene at the call of the president, probably early next week.

The four lowest bidders on each contract, and the amount of the base bids (exclusive of alternates which can be used to reduce substantially the base cost of the building, follow:

General Contract

Earl L. Cump of Chambersburg, \$276,000.

H. B. Alexander & Son of Harrisburg, \$297,239.

Rice & Weidman, of Lancaster, \$297,295.

Ritter Brothers, of Harrisburg, \$297,980.

Heating and Ventilating

E. Keeler Co., Williamsport, \$46,640.

Harry Dougherty & Son, Freeport, \$49,418.

Mulch Brothers, Hollidaysburg, \$49,482.

Leo Steadie, \$49,971.

Plumbing

W. A. Winecoff, Hollidaysburg, \$20,000.

Windber Plumbing & Supply Co., \$23,200.

John F. Moleski, Kulpmont, \$24,480.

Mulch Brothers, Hollidaysburg, \$25,400.

Electrical

James B. Pink, Hollidaysburg, \$35,278.

H. D. Hale Electric Co., Inc., Forest Hill, Pa., \$36,345.

Lewistown Electric Co., Inc., \$36,429.

Electric Supply Co., Bellefonte, \$39,975.

The general contract includes ten alternates, three of which use of stone, construction of paving area, and acoustic tile in shops, add to the base price of the building. The other seven alternates would be deducted from the base price.

The heating and ventilating contract includes six alternates, all of which would reduce the base price. In the plumbing contract there are three alternates—all of them representing reductions from base price. The seven alternates in the electrical contract would result in deductions from the base rate.

Police Seek Elusive Odor In Schad Mine

(Continued from page one)

lice produced the "blood-stained" hunting cap which allegedly had been found inside the mine entrance. There didn't seem to be any blood stains. It was damp in spots, but the dampness was generally believed to be nothing more sinister than muddy water.

As the work progressed an officer occasionally left the group at the fire to enter the mine for an official sniff of air, but the results were discouraging. There was a dank, dark brown smell, such as you'd expect to find in a wet clay mine, but nothing to arouse the hunting instinct of the minions of the law.

Noon came, and with it a serving of hot coffee and hot welders through the courtesy of the Sheriff. Then work resumed. The official sniffers became more and more disinterested in the project, and finally one of the workmen in the mine came out and demanded: "What the heck are we supposed to be looking for?"

The mine had been cleared for a distance of about 40 of its 60 feet, and nary a sniff of anything untoward was smelt. So along about 3 o'clock the operations were closed down.

Sheriff Miller explained: "We went back to where the mine had caved in and where there were no longer any supporting timbers. To go on further would have been to risk the workmen's lives. The only safe way to continue would be to get experienced miners to go in and place timbers as they go to prevent a real tragedy."

Questioned about the odor, the Sheriff replied: "There may be something further back in the mine. I don't know. We did our best. The investigation is now out of my hands. If any further exploring is to be done, proper authorization for the expense involved will have to be forthcoming."

And so it can be reported with some certainty that there is practically no odor in the Schad clay mine for at least 40 feet. And the mine, for that distance, has been opened up quite satisfactorily.

The hunting cap, however, is still a big mystery. But from the look of the well worn, faded and jaded cap, its owner isn't worrying much about it.

Sutton Officer Club Speaker

(Continued from page one)

George Hazel, the latter two continue on the board, and Burgess Hardman P. Harris has succeeded Mr. Hunter.

The smallest machine made weighs about 2,000 pounds, the largest 365,000 pounds. The lowest price machine is sold for \$2,500, and the highest priced for \$56,000. Machines made in 1917 are still in operation. Mr. Risan stated, in reply to the question as to how long these machines last.

The company employs forty-five men. Most of these are highly skilled and include five engineers. The labor turnover is practically nil, some of the men having been with the company since 1917 and most of them having been employed for ten years or more. The payroll is about \$8,000 a month and the company spends in Bellefonte about \$10,000 a month. The product of the company goes to plants over the United States, and machines have been shipped to Russia, Japan, South America, Africa, France and other countries.

Next week the Canadian Pacific Railway's 1,200 feet of 16 mm. color film, with sound accompaniment, entitled "The Radiant Rockies and Alaska" will be presented before the club.

FINAL CLEARANCE

SPECIALS

for

Friday and Saturday Only

One Lot Ladies' DRESSES

Only

\$1.00

One lot at \$1.98

Children's DRESSES

Values to \$1.98—Special

79c

LADIES' COATS

Values to \$19.98. A very special for these two days only, at

\$5 \$8 \$10

Don't Miss These Savings

SID BERNSTEIN

Allegheny St., BELLEFONTE, PENNA.

Properties For Sale!

BELLEFONTE RESIDENTIAL PROPERTIES

13 North Spring Street
Three-story brick house, 9 rooms and bath, hot-air conditioned heat. Central location.

17 North Spring Street
Three-story frame house, 9 rooms and bath, steam heat.

50 East Linn Street
Two and one-half story brick house and 2-car brick garage; 11 rooms and bath, hot water heat. A most desirable residence.

4 LOTS, East Howard Street
Desirable location.

HOWARD BOROUGH

2½-Story Brick Dwelling
Containing seven rooms and bath; lot 64x205 feet. Located on North side of Black street. Hot air heat.

2½-Story Frame Dwelling
Containing 8 rooms and bath. Located on East Walnut st. Hot air heat.

STATE COLLEGE

132 South Barnard Street
3-story brick dwelling, three complete bathrooms; 12 rooms; 2-car brick garage; hot water heat.

132½ South Barnard Street
2½-story frame dwelling; six rooms and bath; hot air heat.

FARM

Formerly known as "Olewine Farm." Situated in Ferguson Township. Contains 152 acres of which 132 acres cleared, includes 2½-story frame house, bank barn and other outbuildings, water piped to house and barn—drilled well, flow seven gallons per minute, electricity.

Reasonably Priced — Inquire at

BELLEFONTE TRUST CO.

BELLEFONTE, PA.

Not every lawsuit is worth the threat seldom accomplish amicable settlements but sometimes they help. A civilized individual has tolerance for all people but he selects his friends.

James Penfield, 59, of Johnsonburg, was injured seriously when he jumped from a moving train to throw a switch, slipped on an icy spot and fell head long through a railroad bridge. He landed on a highway 12 feet below. The accident occurred in the Baltimore and Ohio railroad yards.

It's Claster's for Better



Announcing THE CLASTER WAY BUILDING MATERIALS

BUILD — REMODEL — REPAIR!

THE CLASTER WAY

This Plan Has Been Originated For Your Convenience!

No Cash Needed! No Red Tape!

WE FURNISH MATERIALS! WE PAY THE CARPENTER!
YOU REPAY IN SMALL MONTHLY INSTALLMENTS!

Plan Your Repairs Now—The Claster Way!

OUR PRICES ARE THE LOWEST!

Whenever You Need Building Materials Let Us Quote Our Prices

NO ORDER TOO BIG! NO ORDER TOO SMALL!

CLASTER'S

Phone Bellefonte 8

Phone State College 613

Repair Today The Claster Way! Easy Monthly Payments!

Lumber — Paints — Hardware — Structural Steel — Millwork



- 1939 MERCURY SEDAN Down Payment..... \$234
Light tan color; 11,000 miles; perfect upholstery; tires show very little wear.
- 1939 MERCURY TUDOR Down Payment..... \$217
Black; white wall tires; perfect upholstery; completely overhauled; heater.
- 1940 FORD TUDOR Down Payment..... \$215
Green; 12,000 miles; tires are like new; clean upholstery; hot air heater.
- 1939 PONTIAC COUPE Down Payment..... \$183
Green; runs and looks like new; good tires; all deluxe equipment; the ideal car for the small family.
- 1939 FORD DeLUXE FORDOR Down Payment..... \$183
Blue; hot air heater, all good tires; clean upholstery; reconditioned; looks like new.
- 1938 FORD DeLUXE COUPE Down Payment..... \$142
Brown; radio; good tires; low mileage; clean inside and out. A lot of good service for someone.
- 1937 WILLYS SEDAN Down Payment..... \$85
Black color; all good tires; completely reconditioned. A real economical car.
- 1936 LINCOLN ZEPHYR SEDAN Down Payment..... \$134
Green color; motor has been reconditioned; all good rubber; radio and heater.
- 1939 FORD TUDOR Down Payment..... \$165
Black finish; clean upholstery; very good rubber; motor has been overhauled.
- 1941 FORD Super Dix. FORDOR Down Payment..... \$280
Green; white wall tires, heater, radio, chrome wheels; less than 5,000 mile; a real bargain.
- 1939 FORD DeLUXE TUDOR Down Payment..... \$175
Green; heater; clean paint and upholstery; all good tires.
- 1938 FORD FORDOR Down Payment..... \$142
Black; built-on trunk; clean upholstery; good tires; completely reconditioned; real bargain.
- 1937 FORD DeLUXE FORDOR Down Payment..... \$125
Green; radio, heater, all deluxe equipment; good rubber; built-on trunk; interior of car like new.
- 1937 PACKARD SEDAN "129" Down Payment..... \$150
Black; low mileage; built-on trunk; radio, heater; upholstery has been covered since new.
- 1937 LINCOLN ZEPHYR SEDAN Down Payment..... \$183
Black finish; white wall tires; radio and heater; reconditioned; runs and looks like new.
- 1936 FORD DeLUXE TUDOR Down Payment..... \$84
Gunmetal finish; good upholstery; built-in trunk; heater. A real buy.
- 1936 LINCOLN ZEPHYR SEDAN Down Payment..... \$125
Dark blue; heater; perfect upholstery; good rubber; one owner.
- 1937 FORD COUPE Down Payment..... \$125
Gunmetal finish; all good tires; clean interior; motor overhauled short time ago.

FOUR PICKUPS, 1932-1936..... Priced from \$100 to \$250
EIGHT 1½-TON TRUCKS..... Priced from \$75 to \$700
14 USED CARS (No Guarantee)..... Priced from \$25 to \$150

DUNLAP MOTOR CO.

BELLEFONTE, PA. — PHONE 155

FORD TRACTOR SALES AND SERVICE COMPLETE LINE OF IMPLEMENTS
FORD, MERCURY, LINCOLN SALES AND SERVICE. FORD TRUCKS