

ROOSEVELT GIVEN OVERWHELMING MAJORITY IN PRESIDENTIAL CONTEST

Leads In 41 States; 472 Electoral Votes

Entire State Democratic Ticket is Swept Into Office

COUNTY REMAINS IN G. O. P. COLUMN

VanZandt Returned to Congress by District; Haines Re-Elected

President Roosevelt, who smashed precedent four years ago by polling the largest vote ever accorded a Presidential candidate, shattered another tradition in a dramatic and sweeping victory Tuesday, to become the only President of the United States ever to be elected for a third term.

His election was conceded about 10:30 o'clock yesterday morning by Wendell L. Willkie, his Republican opponent, who had made the third-term question one of the major issues of a bombastic campaign.

While President Roosevelt's popular majority is expected to be considerably less than the 19,000,000 he polled in 1936, his election will assume landslide proportions in the electoral college. Latest reports are that Roosevelt is sure of 41 states having an electoral vote of 472. Willkie is credited to date with 7 states having an electoral vote of 56. Only 265 electoral votes are required for election.

Tabulations yesterday showed the President's popular vote at 23,216,822, and Willkie's at 19,559,805. On the basis of present totals Roosevelt's popular vote represents 54.2 per cent of the total vote cast in the nation's greatest election. The reliable Fortune poll predicted that he would receive 55 per cent of the popular vote. The Gallup poll, another of the leading indices, had forecast the President's popular vote at 52 per cent. The final totals are expected to show a Roosevelt majority of from five to six million votes.

According to radio reports of the vote count late Tuesday night and early Wednesday morning, Roosevelt took the lead early and maintained it steadily. At 10 p. m. Tuesday he was leading in states with a combined electoral vote of 377. At 10:30 p. m. he held an advantage in states with 403 electoral votes. By 11 p. m. the total had increased to 436. At 12:15 a. m. he had a grasp on 450 electoral votes and 15 minutes later the total was 453.

Throughout the night he consolidated his gains as returns poured in, and picked up some additional ones as various states swung from the Willkie to the Roosevelt column.

Before midnight, various newspapers and political leaders had conceded Mr. Roosevelt's re-election. Shortly thereafter, residents of the Hyde Park area, where President Roosevelt was computing returns at his home, staged a torchlight parade to the Roosevelt home. The President, speaking briefly to the crowd, said they would find him "the same Franklin Roosevelt that you have known for a great many years."

Willkie received the returns Tuesday night in a suite of rooms in a New York hotel. Despite the admitted trend toward Roosevelt, he clung grimly to a dwindling hope of victory. (Continued on page four)



SEN. JOSEPH F. GUFFEY

Santa To Visit Here Friday, November 29

The retail division of the Chamber of Commerce, Bellefonte, announced yesterday that Santa Claus will make his annual pre-Christmas visit to Bellefonte on Friday, November 29, the day after Thanksgiving.

Santa is scheduled to arrive early in the afternoon on a westbound Bald Eagle Valley train, and will make brief calls at several towns enroute here. In Bellefonte he will be escorted on a tour of the business area and will be given an official greeting on the Diamond.

Santa will have a treat for the kiddies, and facilities will be provided for youngsters to get in touch with him in regard to their wishes for Christmas.

Sunday Movies Are Defeated

State College Voters More Than Two-to-One Against Proposal

Two of Centre County's largest boroughs, State College and Philipsburg, turned thumbs down on Sunday movies in special ballots taken at the general election, Tuesday.

State College voted against Sunday movies by a majority of more than two-to-one, the totals being 875 for and 1772 against.

Philipsburg's ballot in keeping movies open on Sundays was 634 for, and 746 against.

In State College the vote by districts was:

East District	Yes	No
West District	357	705
North District	345	726
South District	173	341
Total	875	1772

The wording of the question on the ballots asked the voters' approval on the showing of motion pictures after 2 p. m. Sundays.

The Philipsburg vote by wards was:

1st Ward	Yes	No
2nd Ward	154	225
3rd Ward	266	258
4th Ward	214	263
Totals	634	746
Majority		112

Sunday movies were defeated in Muncy, by a vote of 756 to 533; in Jersey Shore, by a vote of 1,539 to 695; in Lewisburg, by a vote of 1,080 to 575, and in Harrisburg, Lock Haven will continue its Sunday movies, however, having renewed its approval of them, Tuesday.

Another ballot on Sunday movies cannot be taken in the communities which voted on the question Tuesday, before 1945. A referendum is decisive for five years, according to State law.

Shot Removed From Forehead Of Hunter

Norman Lucas, aged 21, of Runville, was treated at the Centre County Hospital, Friday, for gunshot wounds of the forehead, received while hunting.

A number of the pellets penetrated the flesh of his forehead. Lucas was discharged from the institution after the shot had been removed.



G. HAROLD WAGNER

"THE CHAMP"



FRANKLIN D. ROOSEVELT

"... we, of course, face difficult days in this country, but I think you will find me in the future the same Franklin Roosevelt you have known for a great many years."

Pedestrian Is Killed By Car

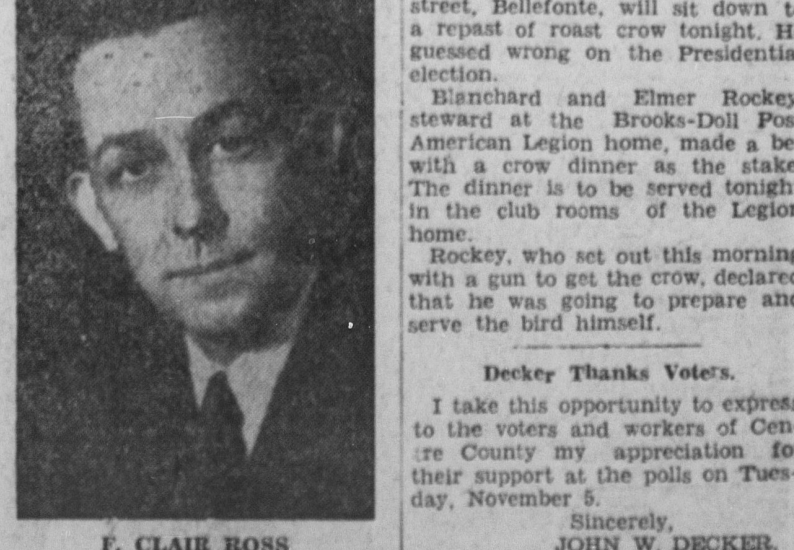
Charles C. Page, 39, Oak Hall, Steps Into Path of Vehicle

Stepping into the path of a moving car on the highway near the airport, one mile east of State College shortly before midnight, Friday, Charles Calvin Page, aged 39, of Oak Hall, was instantly killed.

Page was struck by the right side of the machine, the door handle piercing his skull and breaking off. The right front fender of the car was damaged and a window was broken. The Frye car stopped immediately after the accident.

Centre County Coroner Charles Sheekler, of Milesburg, announced that no inquest would be held. In the car with Frye at the time were Gerald Strawcuter, of Pankutawney, R. D., and three other passengers. Strawcuter suffered slight lacerations about the right side of the face and neck when (Continued on page 4)

Auditor General



F. CLAIR ROSS

Man Is Killed In Fall From Freight Train

Cameron McKinley, 45, of Bellefonte, Jolted From Car Platform

DIES ENROUTE TO COUNTY HOSPITAL

Attempted to Crawl Through Train Halted on Grade Crossing

J. D. Cameron McKinley, 45, of Reynolds avenue, Bellefonte, World War veteran and employe of the State Highway Department, was almost instantly killed at 7:40 o'clock Saturday night when he fell under the wheels of a freight train at the grade crossing near the Carner & Hess grocery on South Water street.

McKinley, on his way home, is reported to have found the crossing blocked by a freight train which was engaged in shifting cars into the Federal Match Company plant nearby. He boarded the cabin car of the motionless train and while walking across to the opposite side the train lurched and the man was thrown between the cabin car and another car.

His right leg was severed between the knee and ankle, and he suffered internal injuries which resulted in his death a few minutes later before his arrival at the Centre County Hospital.

Centre County Coroner Charles Sheekler, of Milesburg, after investigation (Continued on page 4)

Armistice Day To Be Observed Here

11th Peace Service at Episcopal Church; Public Service Planned

Armistice Day will be fittingly observed in Bellefonte next week beginning with appropriate church services on Sunday and a parade and patriotic address on Monday.

The customary church services will be held at St. John's Episcopal church at 11 a. m. Sunday, November 10. All Legionnaires are requested to report at the Legion Home not later than 10:30 a. m. The Post will be accompanied by Troop B, 190th Field Artillery and the Milesburg Band. The service will be conducted by Father C. Warren Newman.

The program for Armistice Day, Monday, November 11, is announced as follows: Legionnaires, as well as organizations participating in the parade, will report not later than 10 a. m. and fall in with the divisions to which they are assigned, in the following order:

First Division: Comrade Herbert M. Beezer, Grand Marshal. This (Continued on page three)

Speed Trap Is Voted In Boro

Council Asks Motor Police To Operate Snare For Speeders

Bellefonte Borough Council at a regular meeting Monday night voted unanimously to ask the State Motor Police to operate a speed trap in the borough. The move was taken when it was reported that speed signs posted in the borough are being ignored.

The vote was taken after a discussion in which other methods of controlling speed and punishing violators were considered and discarded as futile. Borough "speedways" on which violations are most flagrant were said to be Allegheny street, Bishop street, and High street.

Council unanimously voted to turn the town government over to the Bellefonte Women of the Moose, Wednesday, November 6. Yesterday Bellefonte was governed by a Mayor, borough council, and other officials from the Women of the Moose chapter. (Continued on page 4)

STORES CLOSED ARMISTICE DAY

The retail division of the Bellefonte Chamber of Commerce has requested all stores and business places in Bellefonte to remain closed all day Monday, November 11, in observance of Armistice Day.

Truckenmiller Death Is Termed Suicide After Police Investigation

LETTER REVEALS TRAGEDY PLANS

Claim Victim Fired Two Homes Before Shooting Self

ed the note over to police.

In the letter, police report, Truckenmiller said he had been depressed for a long time and that he was troubled in mind and spirit and didn't want to go on living. He expressed no desire to suffer a "slow death," and outlined his intention to set fire to his sister's home at Clintonville; the home of his brother, Melvin, at Hubersburg, and to kill himself.

In regard to the reference to a "slow death," police explained that Truckenmiller had never been in good health. They did not reveal any reason the youth may have had for wishing to set fire to the two homes.

Police said that early in the investigation they learned Truckenmiller had written a note or letter, but that the letter did not come into their possession until early this week. The insurance company had turned it

over to Lancaster police, who later gave it to State Police at Harrisburg.

L. S. S. Smith, handwriting expert for the State Motor Police, was given samples of Truckenmiller's handwriting to compare with the writing on the letter. While no official statement regarding the comparison has been released, police said there is no reason to doubt the authenticity of the letter.

The police investigation of the case paralleled in thoroughness the investigation into the Gates murder here last May. Ace investigators, including photographers, arson specialists, men trained specially in diagramming and conducting minute examinations at the scenes of crimes, detectives, and other specialists in crime work were rushed to Centre County immediately after the Hubersburg tragedy was discovered.

Scores of carefully labeled packages contained bits of evidence gathered at the scene were preserved for possible future need. Many pieces of evidence were examined in police laboratories in Harrisburg. It is reported.

Seven State Police officers Tuesday morning conducted a thorough but fruitless search of a quaint old farmhouse near Hubersburg for (Continued on page three)

Unofficial Vote Cast In Centre County

VOTING PRECINCT	U. S. President		U. S. Senator		State Treasurer		Auditor General		Rep. In Congress		General Assembly	
	Roosevelt-D.	Willkie-R.	Guffey-D.	Cook-R.	Wagner-D.	Malone-R.	Ross-D.	Galloway-R.	Adams-D.	Van Zandt-R.	Decker-D.	Haines-R.
Bellefonte, N. W.	423	737	409	743	418	731	429	721	384	770	409	748
Bellefonte, S. W.	381	526	367	534	367	523	374	517	352	551	359	541
Bellefonte, W. W.	193	176	183	183	184	181	183	178	173	173	197	172
Centre Hall	226	165	230	148	229	153	231	152	219	168	231	157
Howard	114	243	107	238	113	238	113	235	104	255	120	238
Milesburg	126	157	121	157	119	164	125	158	115	171	120	166
Milheim	220	166	221	164	224	161	230	155	214	180	224	167
Port Matilda	113	160	106	160	102	162	106	158	96	177	104	166
Philipsburg, 1 W.	147	323	140	322	143	320	140	322	136	327	140	323
Philipsburg, 2 W.	314	368	301	367	301	365	306	361	295	375	298	369
Philipsburg, 3 W.	331	299	317	300	321	296	321	298	316	307	318	302
S. Philipsburg	114	52	108	54	106	55	106	55	101	63	105	60
Snow Shoe	107	128	103	128	102	129	104	127	95	138	101	130
State Col. E. D.	374	732	336	754	356	726	361	726	273	841	273	842
State Col. W. D.	409	695	381	695	404	682	413	674	330	778	320	775
State Col. N. D.	147	357	149	354	165	339	175	326	126	380	132	377
Unionville Boro.	37	137	36	135	37	132	40	129	38	136	39	134
Benner Twp., N.	102	95	99	94	99	96	100	94	93	105	100	98
Benner Twp., S.	38	39	38	38	39	37	39	35	32	43	32	44
Boggs Twp., N.	53	45	51	44	51	44	51	44	52	44	53	44
Boggs Twp., E.	54	48	54	48	52	49	52	48	52	49	52	49
Boggs Twp., W.	228	198	225	192	224	193	224	190	219	205	226	200
Burnside Twp.	69	47	71	46	71	46	71	46	71	46	71	46
College Twp.	172	327	170	320	174	316	172	319	155	340	166	329
Curtin Twp., N.	70	33	69	32	71	30	71	30	66	36	70	31
Curtin Twp., S.	51	55	50	54	50	55	49	56	49	56	49	56
Ferguson Twp. N.	127	145	131	132	136	134	137	132	113	159	123	150
Ferguson Twp. E.	148	136	144	139	146	137	145	138	144	141	141	144
Ferguson Twp. W.	48	127	53	121	52	122	52	119	50	124	54	121
Gregg Twp., N.	53	26	50	25	50	25	50	25	47	31	54	24
Gregg Twp., E.	98	50	98	49	98	50	98	50	95	92	100	47
Gregg Twp., W.	250	105	241	103	244	102	245	98	234	117	283	72
Haines Twp., E.	108	74	108	73	109	73	110	73	109	74	110	74
Haines Twp., W.	171	174	169	171	174	170	170	171	169	178	180	167
Halfmoon Twp.	51	135	53	132	50	132	50	133	49	137	47	139
Harris Twp., E.	35	39	37	36	35	37	36	37	31	41	34	37
Harris Twp., W.	156	166	150	167	154	164	154	166	142	179	148	174
Howard Twp.	120	123	114	125	116	125	117	124	113	130	116	127
Huston Twp.	74	124	77	117	75	120	75	118	74	120	78	117
Liberty Twp., E.	184	195	173	199	174	199	173	197	166	208	176	200
Liberty Twp., W.	88	35	84	35	86	33	84	35	85	36	87	37
Marion Twp.	71	77	70	78	69	79	71	77	70	78	68	80
Miles Twp., E.	34	36	34	35	33	36	34	35	32	36	33	37
Miles Twp., W.	209	112	207	112	208	109	208	111	204	122	184	146
Miles Twp., M.	90	39	88	41	88	41	88	39	86	42	85	44
Patton Twp.	116	136	114	132	114	131	115	129	111	139	113	136
Penn Twp.	202	92	189	95	190	92	194	88	172	117	195	98
Potter Twp., N.	125	84	123	84	124	84	127	79	119	91	126	84
Potter Twp., S.	104	90	101	87	102	87	104	84	94	99	101	91
Potter Twp., W.	86	45	86	43	87	41	88	40	81	46	85	43
Rush Twp., N.	412	210	406	211	404	207	409	203	395	223	411	205
Rush Twp., E.	50	43	50	43	51	42	49	43	48	45	49	43
Rush Twp., S.	154	147	146	154	153	147	149	148	145	156	142	159
Rush Twp., W.	278	128	268	132	263	131	266	128	254	146	254	131
Snow Sh' Twp. E	390	115	385	117	384	116	383	117	381	120	384	117
Snow Sh' Twp. W	112	95	108	91	105	96	109	90	109	96	106	99
Spring Twp., N.	205	184	198	184	196	185	201	181	186	200	198	185
Spring Twp., S.	244	416	233	409	234	408	236	402	205	450	23	