

To Enforce Coal Peddling Laws

(Continued from Page 1)

coal yards enforce the law, but un-

Miss Margaret Edwards, of the Capital Hospital Service, Inc., of Harrisburg, appeared before Council to explain the new group service which is now available at the Centre County Hospital.

The motor of the borough road roller is to be taken to the plant of L. L. Smith, at Harrisburg, for overhauling.

James Marshall, borough dog catcher, requested some kind of identification to eliminate difficulty he's been experiencing from that source.

When Councilmen pointed to the danger to traffic existing at the intersection of Thomas and Lamb Streets, Council unanimously directed that signs shall be erected to halt all traffic on entering Thomas Street from Lamb Street.

Bellefonte Girl Scouts requested that the borough erect an additional street light in Cherry alley, near the barn at the rear of the Elks Home, which has been given by the Elks for use as a Girl Scout headquarters.

The light could be turned off when not in use, it was pointed out. Councilman Brockerhoff was requested to confer with the Elks Club in the matter.

It was reported that the Lamb Street bridge is in need of paint, and that the bridge over the Gamble Mill race, on West High Street, is in need of repairs.

Harry Menold, of West Curtin Street, reported that considerable radio interference exists in that area and asked that some effort be made to check the noise. The matter was referred to the West Penn Power Company for investigation.

The Finance committee reported as follows:

Borough Department: balance \$7784.03, and bills \$1071.14. Water department: balance \$1747.37, and bills \$390.97.

Offer Prizes For Letters To Santa

(Continued from Page 1)

So hoping you will bring what I want I will close, wishing you a very Merry Christmas.

Peggy Anne Rockey, 108 E. Bishop St., Bellefonte, Pa.

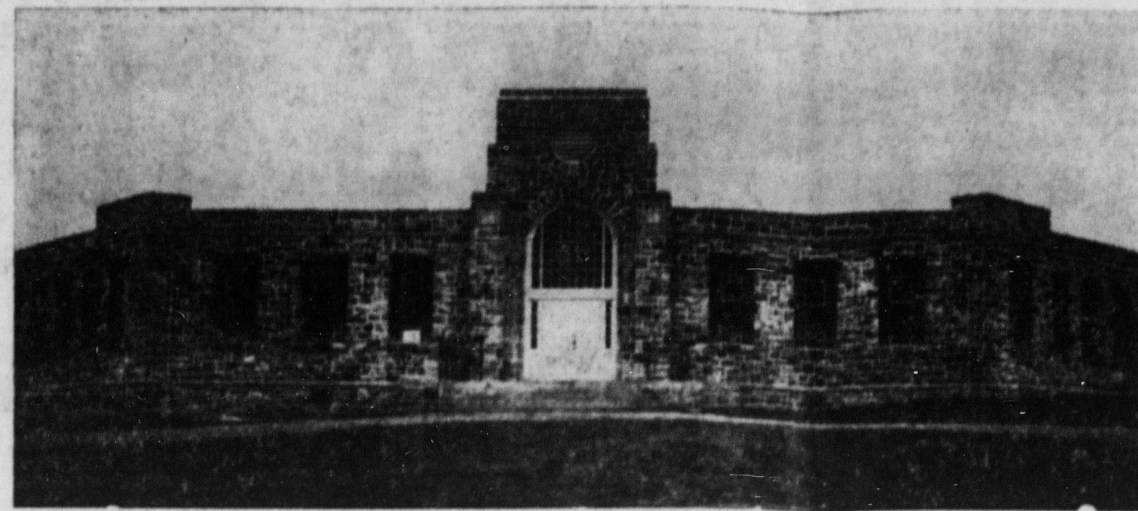
Clarence Ellis Keller, Port Matilda, Pa. Box 101, R. D. 1.

Dear Santa Claus:

Will you please go to Wolf Furniture Co. and get me an electric train and a De-Luxe Cycle. You will find them in Toyland at Wolf's. I am five years old, stay with my Grandpa and Grandma McClellan on a farm. I work pretty hard and think I deserve these toys. Will let the door open and the light on for you. Don't make a mistake and give them to anybody else.

I love you. My Nick Name is Pete.

New Consolidated School at Lemont to be Dedicated



Formal dedication of College Township's new \$81,000 consolidated school building at Lemont will be held on Saturday, December 16, with an open house to the public at 2 p. m. The building replaces eight one-room schools which formerly served the needs of the district.

Built of native limestone and fully and modernly equipped throughout, the new school is reported to be one of the finest of its size erected under the WPA program in Pennsylvania.

The speaker at the dedication exercises will be Jonas Wagner, native of College township and former prominent resident of Bellefonte, who is now with the Depart-

ment of Public Instruction at Harrisburg. Other speakers will include WPA officials, Centre County Superintendent of Schools F. Glenn Rogers and his assistants, Lewis R. Lenhart. The Lemont Band will furnish music for the occasion.

The new building is located on a hill overlooking Lemont, on Route 45. Through the courtesy of the Superintendent of Construction, the building was made available for use when the school term opened on September 18, and 258 pupils in the first eight grades are now attending classes daily. Approximately 60 per cent of the pupils are transported to and from school in two modern buses owned and operated

by W. O. Houtz, of Mill Brook.

The eight rural schools now vacant are to be disposed of at a public sale to be held at Lemont at 2 o'clock on Saturday, December 9. The eight buildings to fall under the auctioneer's hammer are: two in Lemont; the Oak Hall school, one each at the Bush, Dale's Summit, Houserville, Centre Furnace and the one known as "The Hollow School."

The College Township School Board extends a hearty invitation to the public to attend the open house, to meet the ten teachers the school employ, the drivers of the school buses, and members of the school board of the progressive township.

Local Merchants Adopt New Policy

(Continued from Page 1)

dial invitation to the public to visit their stores, regardless of whether or not any purchases are made. The gift suggestions to be seen will be well worth the time and effort.

The nightly programs of Christmas music will be opened at 7 o'clock Saturday night, December 9, with Karl E. Kusse, secretary of the Chamber of Commerce, as master of ceremonies. Brief addresses by A. L. Francis, president of the Chamber, and Mayor Hardman P. Harris will highlight the opening program over the town-wide public address system. After the addresses, Miss Mary E. Sloop and Mrs. Paul Beaver, well known church organists, will broadcast organ music from St. John's Lutheran church, which will serve as the studio for all programs during the holiday season.

The tentative program arranged to date includes Thursday, December 14, which is set aside as Blanchard night, in charge of the choir of the Church of Christ of Blanchard. Other nights are to be set aside for Howard, Pleasant Gap, Milesburg, Jacksonport, Zion and other neighboring towns. The County Federation of Women's Clubs will have

charge of the program on Friday, December 22, at which time the Legion Band, Milesburg Band, Bellefonte High School Band and the Bellefonte Banjo Band are expected to appear.

Churches will unite for a program on Saturday, December 23, and many other groups will be heard over the broadcasting system. Any groups or organizations desiring time on the system are requested to get in touch immediately with Karl E. Kusse, secretary of the Chamber of Commerce, who has charge of arranging the program.

Another nightly feature will be interviews of persons on the streets of the business section, chosen at random from shopping crowds. Each person so interviewed will be presented with a card entitling him (or her) to a gift from some Bellefonte store.

Beginning Thursday night, December 14, all stores and business places, with the exception of food stores, will be open every evening to accommodate those who cannot do their shopping during the regular business hours.

Will Appeal Decision

Eugene Struble, Bellefonte, R. D. 1, it is stated will appeal to Clinton county court the decision of Alderman E. A. Ryan, who had a hearing on a motor accident case Tuesday morning. Struble was fined

\$12.50 on a reckless driving charge after an accident in which his car collided with an automobile driven by James H. Walker, Flemington. The accident occurred in Lock Haven, November 15.

Wisdom is what people talk about but what most intelligent men mist.

OPTOMICAL TIPS

We have installed the latest in Bausch and Lomb examinations equipment to give complete optical service.

Broken lenses replaced within 24 hours. Bring the broken pieces.

DR. EVA B. ROAN Bellefonte - State College Bellefonte Office Hours—Wednesday 2 to 8; Saturday 9:30 to 10:30

Hospital Plan Well Received

(Continued from page one)

tests, examination of pathological tissue and other equivalent examinations. Maternity care is provided after the contract has been in effect for 10 months," she said.

"Today there are too many people physically handicapped by early neglect of injuries or from lack of access to modern, well-equipped hospitals and well-trained doctors. Others suffer because they did not have the means to pay for needed hospitalization. We will not be able to say that 10 years or a century from now, since group hospitalization has become a national plan that affords every one a chance," the representative concluded.

Miss Edwards will address employees of Rockview penitentiary Sunday, December 10, at 3 p. m. Last Saturday she gave a talk to the employees at the Fish Hatcheries at Pleasant Gap. She will appear before groups of local social, industrial and business organizations during the next two weeks. Her headquarters are at the Brockerhoff Hotel in Bellefonte. Miss Edwards reports the plan is being well received in Bellefonte and vicinity.

13 Cases Are To Be Tried

(Continued from Page 1)

accident and the death toll increased to four within six days. Gravish was among the injured persons.

Monday, December 11

The complete trial list follows:

Arthur J. Rockey, Milesburg, f. and b.

Donald Dyke, Milesburg, f. and b.

Horace Shope, Bellefonte, statutory rape and f. and b.

William E. Weiser, Port Matilda, arson.

Chester Squires, Philipsburg, a. and b.

James H. Bird, Bellefonte, R. D. 2, v. v. code.

Kathleen Brown and Wilbur Miller, Bellefonte, larceny.

Christian Heaton, Blanchard, a. and b.

R. S. Ripka, Bellefonte, v. v. code

Tuesday, December 12

George Hurlock, George Socie, Joe Sherokey, John Petcenko, Jr., Philipsburg, malicious mischief.

Toheld Gravish, Jr., Osceola Mills, involuntary manslaughter.

Edward Reed, George Poorman.

Getting Up Nights

CAUSED BY

Getting up nights may be caused by sluggish kidneys. Kidneys often need help same as bowels. If excess acids and other wastes are not regularly eliminated, it may lead to burning, scanty or frequent flow, backache, leg or rheumatic pains, headache or dizziness. Keep kidneys active. Get a box of BUKETS from any drugist. Your 25c back if not pleased in 4 days. Locally at Parish Drug Store.

MUNICIPAL MILLHEIM, PA.

NOW PLAYING THURSDAY (December 7th)

The Dead End Kids, in:

"Hell's Kitchen"

Family Night

Adults—15c Children—10c

"WORLD'S FAIR, JR." "COLOR CARTOON"

FRIDAY & SATURDAY (December 8th & 9th)

Once a Bumstead—always in trouble:

"Blondie Brings Up Baby"

Penny Singleton Arthur Lake Larry Simms

Just the type picture for the family.

MONDAY & TUESDAY (December 11th & 12th)

By All Means Be Sure You See This Picture:

"A Christmas Carol"

A Charles Dickens Story. ALWAYS THE FINEST SELECTED SHORTS

—Also Chapter 4—

"KIT CARSON SERIAL"

Rare Luck of Deer Hunters

The most unusual hunting story in Bradford county this year is that of Al Crandall who hunting on the

farm of his father, Leigh Crandall, near Myersburg, passing through an old orchard he heard an unusual noise and creeping close, he found two bucks fighting. Picking the best of the two, he shot and killed the 200-pound, eight-point

near Myersburg, passing through an old orchard he heard an unusual noise and creeping close, he found two bucks fighting. Picking the best of the two, he shot and killed the 200-pound, eight-point

Advertisement for Brachbill's Gift Values. Features a cartoon character holding a gift box and the text: 'GIFT VALUES AT BRACHBILL'S THOSE WHOM YOU "REMEMBER" WITH A GIFT FROM BRACHBILL'S ARE SURE TO BE PLEASED!'

Everyone of our pieces in correct design with the smartness everyone will like and cherish. When you come to Brachbill's for your gifts you can be sure of quality at prices that are sure to please.



You may choose tables and chairs, desks and secretaries, sofas and easy chairs as well as pieces, groups and suites for bedroom and dining room. All have authentic style. All are made of rich and correct cabinet woods by expert craftsmanship. All have that distinction to make your gift so much appreciated and so long remembered.

BRACHBILL'S Established 1841 Bellefonte, Pa.

"Who Shall Settle My Estate?"

THE most important clause in your will, is the one naming your executor.

UNLESS your estate is properly settled, it may dwindle in value, causing your heirs unnecessary privation.

WITH this institution your Executor and Trustee, your estate will have management equipped with facilities and knowledge of legal matters necessary for a successful service.

YOU are invited to discuss with us "EXECUTORSHIP" at any time.

The First National Bank Bellefonte, Pa. (Member of Federal Deposit Insurance Corporation)

Sparkling JEWELRY Gifts

Large advertisement for W. E. Crossley, Jeweler. Features a couple looking at jewelry, various diamond rings, watches, and necklaces. Text includes: 'Because she is dear to you—give her the one gift which above all others, expresses love and appreciation. Give her jewelry she may treasure forever.' and 'W. E. CROSSLEY, Jeweler Brockerhoff Hotel Building Bellefonte, Pa.'

WEIS PURE STORES FOOD STORES

Outstanding Savings! With These New Low Prices!

BROWN SUGAR lb 5c CRANBERRY SAUCE 2 17-oz. cans 25c

Pea Beans - - - 2 LBS 11c

Lima Beans - lb 9c Marrow Beans - 2 lb 15c

Heinz Ketchup Large Bottle 19c

Waldorf Tissue 2 rolls 9c

DelMONTE Pineapple Juice 3 tall cans 25c

Coffee "BREAKFAST HOUR" lb bag 15c

Flour WEIS BEST PASTRY 5 lb bag 17c

Chocolate Candy - - - lb 20c

P. & G. Soap - - 5 cks 19c

Lifebuoy Soap - - 3 cks 19c

Spry - 3 lb can 49c

Green Star Oleo - - - 2 lbs 29c

White American Cheese - 2 lb bx 49c

Ivory Soap - - 3 cks 17c

Choice Toasted Cornmeal 5 lb 25c

Pure Buckwheat Rotes - 5 lb sk 25c

Fancy Mixed Nuts lb 20c

Paper Shell Almonds - lb 23c

Paper Shell Pecans - - lb 23c

Diamond Brand Walnuts - - lb 25c

Pascal Celery 3 large stalks 25c

Iceberg Lettuce 2 heads 15c

Florida Oranges - 2 doz. 27c • Potatoes - 3 lb 10c

QUALITY MEATS at LOWER PRICES

FRESH Shoulders 4-6 lb Picnic Style lb 11c

ROLLED Rib Roast Prime Rib of Quality Beef lb 25c

SUGAR CURED Sliced Bacon 2 1/2-lb pkgs. 25c

Pork Sausage Country Smoked lb 15c

Veal Chops Shoulder lb 15c