

Four Fined For Game Violations

Four arrests were made in Clinton county Saturday by officers of the State Game Commission, on charges of killing and possessing venison out of season.

The second offender is Harry Louis Crissinger, of Lock Haven, who was implicated as the killer of a deer at the head of Queen's Run Friday morning.

Additional Locals

The condition of D. M. Kline, of East Linn Street, for the past several weeks a medical patient at the Centre County Hospital, last night was reported to be "very serious."

James Fanning, of Willowbank street, became ill Saturday night and has been confined to his home since that time.

street, became ill Saturday night and has been confined to his home since that time.

—Mr. and Mrs. G. Earle Hoffer and Miss Roxanna Mingle left yesterday for Philadelphia to attend the wedding of Mr. Hoffer's brother, Robert Hoffer, who will wed Miss Virginia Clark, of Alden, at a ceremony to be held in All Saints Episcopal church, Norristown, at 5 o'clock this Thursday afternoon.

—Dr. M. A. Kirk, veteran Bellefonte physician who three weeks ago suffered a fractured hip in a fall, is reported to be in quite serious condition at his home on West High Street where he has been under medical care since the accident.

—Among those who attended the Kelleher-McDermott wedding at Houtzdale yesterday were: Rev. Father William E. Downes, Mr. and Mrs. T. J. Kelleher, the Misses Arnes and Marie Kelleher, Robert and Richard Kelleher, Mr. and Mrs. Harry Tanney, Mr. and Mrs. Crider Clevenstine, Mr. and Mrs. Robert Gusewite, Mrs. Henrietta Wells, and Miss Anna McDermott, all of Bellefonte; Miss Eleanor Kelleher of Pittsburgh; Mr. and Mrs. Harry Peterson of New York City; Miss Sue Seaman of Philadelphia, and Mrs. Earl Henry of Harrisburg.

Seeks Aid For County Farmers

(Continued from Page 1)

approaching \$30,000. "The position of these borrowers," said the Farm Credit Administration, "who are not able to pay because of reasons beyond their control, will be carefully analyzed, to determine what type of assistance may be invoked to enable them to carry on."

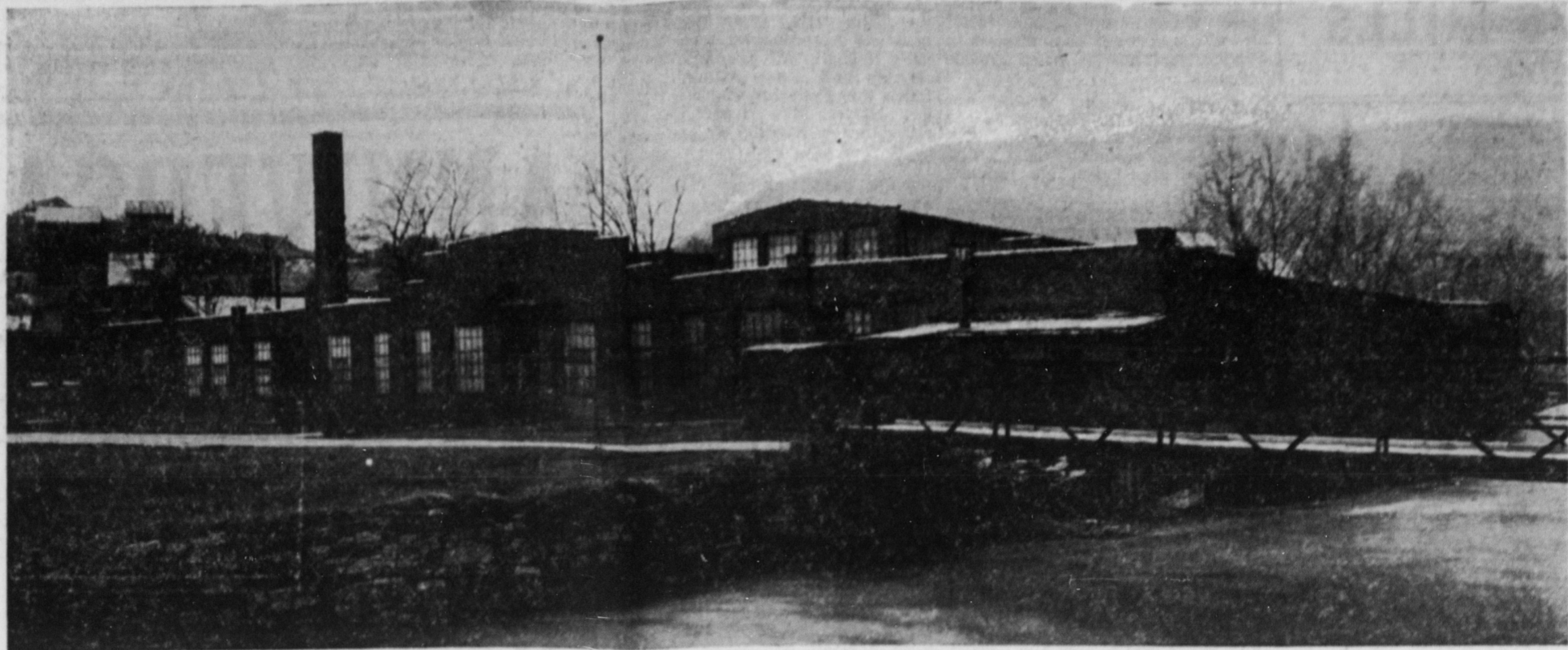
The farm credit situation presents a favorable picture, in spite of difficulties experienced by many farmers, officials claim. Almost a fourth of all long-term loans made since 1933 have been repaid. Since the Farm Credit Act of 1935, 31 per cent of loans have been made for outright purchase of farms, and 71,000 farms have been purchased with this loan money.

While the FCA has not proclaimed a moratorium on foreclosures, it will foreclose only in cases of absolute necessity. And while a program of Federal aid is being determined, financially distressed farmers can proceed with their work, assured that increasing prices are in their favor, and that loan agencies are trying to help them keep their farms, rather than take them away.

Deciding to investigate the reason why so many golf balls disappeared from the second fairway of the Country Club, at Norfolk, Conn., 150 golfers found sixty-four of the ball in a squirrel's winter cache.

—The most news for \$1.50

TITAN METAL COMPANY BUYS FORMER EAGLE SILK MILL PROPERTY



The building shown above, built at a cost of about \$110,000, has been idle since the Eagle Company discontinued operations about two years ago. Containing about 36,000

square feet of floor area, all on the ground floor, the structure is admirably suited to serve the Titan Company's storage and shipping department needs.

The mill property is located on North Water Street, between Spring Creek and the Gamble Mill race, and the sale includes a small tract of land at the northern end

of the building which can be used for future expansion. According to reports the property was sold to the Titan for \$28,000, the Reconstruction Finance Cor-

poration being the vendor. The RFC has owned the property since the failure of the Eagle Silk Company.

Labor Organizers Are Threatened

Members of Blair Union Run out of Claysburg Tuesday Night

Threatened with violence and peppered with fruit and vegetables, Thomas V. Bowen, president of the Blair County Central Labor Union, and two American Federation of Labor organizers were run out of Claysburg Tuesday night when they attempted to hold an outdoor meeting to organize employees of the General Refractories plants at Claysburg and Sproul.

The Central Labor Union head declared the three went to Claysburg Tuesday night to explain the method of organizing a union and to outline its purpose. Unable to secure a hall, they were about to begin a meeting on the commons at Claysburg, when a crowd gathered around and threatened, "If you don't get back in your car and go away, we'll haul you out." This was followed by a barrage of fruit and vegetables.

President Bowen said no effort had been made to organize the brick and clay plants until last June when a request was made by several workers. Upon the receipt of this request, he had Stare go to the plants and look over organization possibilities. He asserted Stare obtained authorization from 153 of the approximately 300 workers in both plants.

President Bowen said no effort had been made to organize the brick and clay plants until last June when a request was made by several workers. Upon the receipt of this request, he had Stare go to the plants and look over organization possibilities. He asserted Stare obtained authorization from 153 of the approximately 300 workers in both plants.

Elliott Dies in New York

(Continued from Page 1)

faction the state gets... a sort of revenge. But we keep on getting these terrible criminals just the same."

A part-time job as Pennsylvania's official executioner opened with the death in New York of Elliott, who has spun the dial of death for condemned slayers at Rockview penitentiary for the last 13 years.

Warden Stanley P. Ashe, of western Penitentiary, will select a successor to Elliott, official executioner for five eastern states, who put 110 men and one woman to death in the electric chair in this state during his period of service. He was paid

MUNICIPAL MILLHEIM, PA.

FRIDAY & SATURDAY (October 13th & 14th)

Spencer Tracy Nancy Kelly Richard Greene

"Stanley and Livingstone"

Walter Brennan, Charles Coburn LATEST WAR NEWS CARTOON SPORT REEL

MONDAY & TUESDAY (October 16th & 17th)

Brian Aherne June Lang Victor McLaglen

"Captain Fury"

See "Captain Fury" rescued from the Noose by the reckless, daring of his gang.

ALSO SELECTED SHORTS

Recent Weddings

Wilmers—Rote. Edna Mae Rote, daughter of Mrs. Ruth Rote, of South Allegheny Street, Bellefonte, became the bride of Kenneth A. Wilmers, son of Mr. and Mrs. Lester Wilmers, of Roopsville, at the home of the bride's mother, Saturday evening, a 3 o'clock, the Rev. G. E. Householder, pastor of the United Brethren church officiating. The beautiful ring ceremony was used. The young couple was attended by Mr. and Mrs. George Monnell, of Bellefonte. Mrs. Monnell is a sister of the bride. The bride was beautifully attired in blue with accessories to match. The young couple will reside in Bellefonte.

Schenck—Williams. In a ceremony performed shortly after midnight October 1, Donald W. Schenck, son of Mr. and Mrs. Foster Schenck, of Blanchard, and Miss Gladys E. Williams, daughter of Mr. and Mrs. Fred Williams, of Clearfield, were united in marriage at the parsonage of the First Evangelical church by the Rev. Homer W. Haysley. The couple immediately departed for a wedding trip to New York City, returning Thursday. They are residing for the present at Blanchard. Mr. Schenck is a graduate of the Clearfield High school and the Bellefonte Hospital

Training School for Nurses in 1935

and is now a member of the nursing staff at the Lock Haven Hospital. Mr. Schenck is a graduate of the Lock Haven High school in the class of 1929, and is employed at the Lock Haven A. & P. Super Market on Main street. The midnight wedding ceremony was performed after Mr. Schenck finished his Saturday night duties at the store.

Kelleher-McDermott. Miss Mary Ellen McDermott, of Bellefonte and Joseph T. Kelleher, also of Bellefonte, were married in St. Lawrence's Catholic Church, Houtzdale, at 9:30 o'clock yesterday morning by Rev. Father M. J. Seabolt, pastor of the church. Miss McDermott was attended by Miss Genevieve Burns, of Houtzdale as bridesmaid while James Haupt, Jr., of Bellefonte served as best man for Mr. Kelleher. The altar was decorated with chrysanthemums and other fall flowers. Robert and Richard Kelleher, brothers of the bridegroom, served as altar boys. Mrs. John Greenwalt and Jerome Lorigan, both of Houtzdale, sang during the ceremony, after which a wedding breakfast for 32 guests was served at the Phillips Hotel, Phillipsburg. Mrs. Kelleher is a graduate of the Osceola High School and the Mason-Frederick School of Beauty Culture, Pittsburgh, and for the past six years has been employed at the Tanne Beauty Parlor, Bellefonte. Mr. Kelleher, son of Mr. and Mrs. Thomas J. Kelleher of S. Spring Street, Bellefonte, is a graduate of St. John's Catholic School, Bellefonte, and Bellefonte High School. In the latter school, he started as an athlete, playing on the football, baseball and basketball teams. He is employed by the Titan Metal Company, Bellefonte. Following their return from a wedding trip the early part of next week they will be at home in an apartment in the Henderson house on E. High Street, Bellefonte.

Marriage License. Kenneth Allen Wilmers—Bellefonte; Edna Mae Rote—Bellefonte.

Marriage License. Kenneth Allen Wilmers—Bellefonte; Edna Mae Rote—Bellefonte.

Marriage License. Kenneth Allen Wilmers—Bellefonte; Edna Mae Rote—Bellefonte.

Marriage License. Kenneth Allen Wilmers—Bellefonte; Edna Mae Rote—Bellefonte.

Marriage License. Kenneth Allen Wilmers—Bellefonte; Edna Mae Rote—Bellefonte.

Marriage License. Kenneth Allen Wilmers—Bellefonte; Edna Mae Rote—Bellefonte.

Marriage License. Kenneth Allen Wilmers—Bellefonte; Edna Mae Rote—Bellefonte.

Marriage License. Kenneth Allen Wilmers—Bellefonte; Edna Mae Rote—Bellefonte.

Marriage License. Kenneth Allen Wilmers—Bellefonte; Edna Mae Rote—Bellefonte.

Marriage License. Kenneth Allen Wilmers—Bellefonte; Edna Mae Rote—Bellefonte.

Marriage License. Kenneth Allen Wilmers—Bellefonte; Edna Mae Rote—Bellefonte.

Marriage License. Kenneth Allen Wilmers—Bellefonte; Edna Mae Rote—Bellefonte.

Marriage License. Kenneth Allen Wilmers—Bellefonte; Edna Mae Rote—Bellefonte.

Marriage License. Kenneth Allen Wilmers—Bellefonte; Edna Mae Rote—Bellefonte.

Marriage License. Kenneth Allen Wilmers—Bellefonte; Edna Mae Rote—Bellefonte.

Marriage License. Kenneth Allen Wilmers—Bellefonte; Edna Mae Rote—Bellefonte.

Marriage License. Kenneth Allen Wilmers—Bellefonte; Edna Mae Rote—Bellefonte.

Marriage License. Kenneth Allen Wilmers—Bellefonte; Edna Mae Rote—Bellefonte.

Marriage License. Kenneth Allen Wilmers—Bellefonte; Edna Mae Rote—Bellefonte.

Marriage License. Kenneth Allen Wilmers—Bellefonte; Edna Mae Rote—Bellefonte.

Marriage License. Kenneth Allen Wilmers—Bellefonte; Edna Mae Rote—Bellefonte.

Marriage License. Kenneth Allen Wilmers—Bellefonte; Edna Mae Rote—Bellefonte.

Marriage License. Kenneth Allen Wilmers—Bellefonte; Edna Mae Rote—Bellefonte.

Marriage License. Kenneth Allen Wilmers—Bellefonte; Edna Mae Rote—Bellefonte.

Marriage License. Kenneth Allen Wilmers—Bellefonte; Edna Mae Rote—Bellefonte.

Marriage License. Kenneth Allen Wilmers—Bellefonte; Edna Mae Rote—Bellefonte.

Marriage License. Kenneth Allen Wilmers—Bellefonte; Edna Mae Rote—Bellefonte.

Marriage License. Kenneth Allen Wilmers—Bellefonte; Edna Mae Rote—Bellefonte.

LETTERS to the Editor

Defend Local Schools. It appears that the man on the net is greatly misinformed in regard to school matters. The asserted ill that beset the Bellefonte school system in many instances are of lesser importance, while the chief evil—lack of adequate permanent facilities for the high school because of last February's disastrous fire—is often forgotten in the middle of other matters.

Most Schools Not Rated. Much is being made of the fact that the Bellefonte High School is not accredited by the Commission on Secondary Schools for the State Association of Colleges and Secondary Schools.

The Pennsylvania Education Directory for 1938-1939 shows that of the State's nearly 3,000 secondary schools, only 169 were accredited by the Commission on Secondary Schools. (Continued on last page—2nd Sec.)

Hecla Park

7 Miles E. of Bellefonte, Route 220

WED. OCT. 25th

IN PERSON BOB CROSBY

AND HIS ORCHESTRA

Admission (and tax) \$1.10

Dancing 9 to 1.

To Examine CCC Applicants Here

County Quota of 60 New Members to be Chosen, Monday

Physical examinations for applicants to CCC camps will be given Monday, October 16, at the Bellefonte YMCA. It was reported yesterday by local offices of the Department of Public Assistance.

It is expected that there will be approximately 150 applicants to be examined Monday, but because of the requirements which must be met there is some doubt whether officials will be able to fill the quota of 60 new enrollees allowed this county. Any boys wishing to apply for membership are urged to get in touch at once with the Public Assistance office, Temple Court building, Bellefonte.

Officials yesterday announced that there is absolutely no military tie-up with the CCC. Boys in the various camps are in no greater danger of being called for military duty than are boys of the same age in private industry or on the farm.

Centre county has the ninth largest CCC enrollment in the State, it was announced. This rather unusual condition results from several factors. The county has always shown a great interest in CCC work, and county boys have always been eager to get into the corps. Consequently the county quotas have never gone begging and the enrollment has been maintained at a high peak.

Centre county has the ninth largest CCC enrollment in the State, it was announced. This rather unusual condition results from several factors. The county has always shown a great interest in CCC work, and county boys have always been eager to get into the corps. Consequently the county quotas have never gone begging and the enrollment has been maintained at a high peak.

Centre county has the ninth largest CCC enrollment in the State, it was announced. This rather unusual condition results from several factors. The county has always shown a great interest in CCC work, and county boys have always been eager to get into the corps. Consequently the county quotas have never gone begging and the enrollment has been maintained at a high peak.

Centre county has the ninth largest CCC enrollment in the State, it was announced. This rather unusual condition results from several factors. The county has always shown a great interest in CCC work, and county boys have always been eager to get into the corps. Consequently the county quotas have never gone begging and the enrollment has been maintained at a high peak.

Centre county has the ninth largest CCC enrollment in the State, it was announced. This rather unusual condition results from several factors. The county has always shown a great interest in CCC work, and county boys have always been eager to get into the corps. Consequently the county quotas have never gone begging and the enrollment has been maintained at a high peak.

Centre county has the ninth largest CCC enrollment in the State, it was announced. This rather unusual condition results from several factors. The county has always shown a great interest in CCC work, and county boys have always been eager to get into the corps. Consequently the county quotas have never gone begging and the enrollment has been maintained at a high peak.

Centre county has the ninth largest CCC enrollment in the State, it was announced. This rather unusual condition results from several factors. The county has always shown a great interest in CCC work, and county boys have always been eager to get into the corps. Consequently the county quotas have never gone begging and the enrollment has been maintained at a high peak.

Centre county has the ninth largest CCC enrollment in the State, it was announced. This rather unusual condition results from several factors. The county has always shown a great interest in CCC work, and county boys have always been eager to get into the corps. Consequently the county quotas have never gone begging and the enrollment has been maintained at a high peak.

Centre county has the ninth largest CCC enrollment in the State, it was announced. This rather unusual condition results from several factors. The county has always shown a great interest in CCC work, and county boys have always been eager to get into the corps. Consequently the county quotas have never gone begging and the enrollment has been maintained at a high peak.

Centre county has the ninth largest CCC enrollment in the State, it was announced. This rather unusual condition results from several factors. The county has always shown a great interest in CCC work, and county boys have always been eager to get into the corps. Consequently the county quotas have never gone begging and the enrollment has been maintained at a high peak.

Centre county has the ninth largest CCC enrollment in the State, it was announced. This rather unusual condition results from several factors. The county has always shown a great interest in CCC work, and county boys have always been eager to get into the corps. Consequently the county quotas have never gone begging and the enrollment has been maintained at a high peak.

Centre county has the ninth largest CCC enrollment in the State, it was announced. This rather unusual condition results from several factors. The county has always shown a great interest in CCC work, and county boys have always been eager to get into the corps. Consequently the county quotas have never gone begging and the enrollment has been maintained at a high peak.

Centre county has the ninth largest CCC enrollment in the State, it was announced. This rather unusual condition results from several factors. The county has always shown a great interest in CCC work, and county boys have always been eager to get into the corps. Consequently the county quotas have never gone begging and the enrollment has been maintained at a high peak.

Centre county has the ninth largest CCC enrollment in the State, it was announced. This rather unusual condition results from several factors. The county has always shown a great interest in CCC work, and county boys have always been eager to get into the corps. Consequently the county quotas have never gone begging and the enrollment has been maintained at a high peak.

PRUNLAX Relieves CONSTIPATED CONDITION. No need to suffer day after day with CONSTIPATION. Throw off the yoke that has kept you feeling a dozen years older than you are.

Pick Now! New Shipment! "Better Light—Better Sight" I. E. S. Lamps Latest 1939 Styles. They're almost unbelievable, the values we offer in new 1939 I. E. S. lamps. There's a big selection of shades and stands, modern in style, moderate in price—and values are the best in lamp history.

CALLING ALL CITIZENS FIRE PREVENTION WEEK October 8-14. FIRE is no respecter of persons. Your home may be next. Prevent fire with care... prevent a financial setback by fire with dependable fire insurance.

Hugh M. Quigley ALL FORMS OF INSURANCE. Temple Court Bellefonte, Pa.

BULBS. All Hyacinth and Tulip Bulbs are Imported From Holland! What Will the War Do to Their Production With Holland's 1,000,000 Men Under Arms? Hyacinths 90c a dozen Tulips 75c a dozen Daffodils \$1.25 a dozen Crocus 3c each Woodring's Floral Gardens 127 EAST HOWARD ST. PHONE 64 BELLEFONTE, PA.

To Examine CCC Applicants Here. County Quota of 60 New Members to be Chosen, Monday. Physical examinations for applicants to CCC camps will be given Monday, October 16, at the Bellefonte YMCA.

Sleek Beauty in FOOT REST SHOES. Feet look better in this fine footwear, with its smart style and high quality. They feel better, too, because they're cushioned and supported at every point.

YEAGER'S SHOE STORE. Plaza Theatre Bldg. Bellefonte, Pa. All Styles \$6.50. FOUR-SPOT COMFORT. A—Hool Cushion absorbs shocks in walking. B—Rolled Franks side balance and padding. C—Metatarsal Cushion makes your step light. D—Sung Heelset 1/2-inch heel fit, never loose.

WEIS PURE FOOD STORES SALE of BAKING NEEDS! Your neighborhood Weis Pure Food Store has a complete variety of baking needs... Shop there today — you'll enjoy the added economy and courteous service!

WEIS QUALITY FAMILY FLOUR 12-lb bag 39c. WEIS BEST PASTRY FLOUR 12-lb bag 33c. PURE LARD 1-lb 11c. SPRY SHORTENING 1-lb 51c. HERSHEY'S COCOA 1-lb 15c. GRANULATED SUGAR 10-lb bag 61c. FANCY BUTTER 2-lb 59c. BON-TON VANILLA FLAVOR 8-oz bot 25c.

BLUEBIRD GRAPEFRUIT 3 cans 25c. MOTHER'S OATS 9c. N. B. C. PREMIUM CRACKERS 15c. Marvel Salad Dressing qt. 23c. Brown or Yellow Heinz Mustard jar 9c. Ridge Farm Cooked Peas 4 #2 cans 25c. Log Cabin Syrup 12-oz can 19c. Old Dutch Cleanser 2 cans 15c. Fancy Med. Red Salmon tall can 21c. Corn Kix 2 pkgs 23c. Waldorf Toilet Tissue 2 rolls 9c.

QUALITY MEATS AT Great Savings! TENDER ROUND STEAK - 1 lb 25c. PICNIC STYLE (4 to 6-lb average) PORK ROAST - 1 lb 13c. COUNTRY SCRAPPLE - 3-lb pan 20c. SKINLESS WEINERS - 1 lb 21c. Variety of Fish Fillets & Oysters.