

Home-Coming at Curtin Church

Morning, Afternoon and Evening Services Scheduled for August 21

A program including morning, afternoon and evening services has been arranged for the sixth annual homecoming at "Old Eagle Chapel" Methodist Episcopal church, Curtin, Sunday, August 21.

Townships Get Share State Funds

Harrisburg, said he expected the payments to be completed within the week. They were made under the Furman Act, which established an allocation of approximately \$96 a mile per year for the 1935-37 biennium for maintaining township roads.

"We didn't make the payments by March 1, because in some instances there were overdrafts," said Van Riper. "Other things that complicated our procedure were that each township had to be figured separately on the basis of how much had been expended in each, and rental costs of state equipment used in road maintenance had to be deducted."

Payments were started after a Dauphin county township sued for its share.

"Not one cent is being held back on the amount due each township," Van Riper said.

He said the returns now being made to townships could be used only for road construction or improvement purposes.

MANY WIN PRIZES AT TITAN EMPLOYEES PICNIC

Winners of prizes at the annual picnic of employes of the Titan Metal Manufacturing Company, Bellefonte, at Hecla Park, Friday were:

- Boys: potato race, 7 to 10 years, Robert Quick, sweater; bag race, 11 to 15 years, Robert Jones, ball glove; doughnut race, 7 to 15 years, Ralph McMullin, fishing rod; watermelon race, 11 to 15 years; Lester Jones, camera; pie eating contest, 7 to 10 years, Richard Malone, watch. Girls: potato race, 7 to 10 years, Marietta Shay, sweater; bag race, 11 to 15 years, Evelyn Stewart, bracelet; doughnut race, 7 to 15 years, Betty Rine, pocketbook; watermelon race, 11 to 15 years, Elina Quick, vanity case; foot race, 10 to 15 years, Beulah Cooper, necklace. Martha Benner won an award in the ladies' bean counting contest. The committee in charge of contests was as follows: Sam Rhinesmith, James Funk, Laird Bathurst, Henry Houser, John Rider, Roy Swartz, Earl Swartzell, Agnes Seprish, Julia Praskovich, Louise Luckovich and Joyce Campbell.

Crowds Attend Gospel Services

Services are being held each night at seven-thirty by the Puller Evangelistic team in the grove near the school house, at Bellefonte, Pa.



Every evening Rev. Merle Fuller brings a true Gospel message to his hearers. He preaches the unadorned Word of God.

Come and hear these "laborers in His vineyard" working, to bring honor and glory to His name.

Announce Prizes For Booster Day

Brother's Shoe Store; Passes to shows for one week given by State & Plaza Theatres.

Most Single—One hat given by Friedman & Levine Clothing Store.

Most Total Bases—One choice of Mexico Pipes given by Parrish Drug Store.

Most Runs Driven In—One pair of dress shoes given by Yeager's Boot Shop.

Most Shaving Kits given by Widman & Teal Billiard Parlor.

Most Stolen Bases by one Player—One military set given by Johnson's Cut Rate Store.

Most Spectacular Catch—One safety razor given by Everitt's Drug Store.

Most Strike Outs by One Pitcher—One pound of Whitman's candy given by Hood's Billiard Parlor.

Most Put Outs—One baseball bat or One Sweat shirt given by O. A. Kline Hdw.

Most Assists—One pair of house slippers given by Murphy's 5 & 10 Store.

Most Bases on Ball—One three call flashlight given by DeHaas Electric Store.

Most Two Base Hits—Five gallons gasoline given by Benjamin Herr.

Most Three Base Hits—One chrome desk lamp given by Crossley Jewelry Store.

Winning Pitcher—Two choice of men's ties, given by Montgomery & Company.

First Run Scored for Each Team—One bathing suit given by Heverly's Sporting Goods Store; One smoking stand given by Brachbill Furniture Company.

Best Batting Average for one Player on each Team—One sack of flour given by A & P Food Store (Allegheny Street).

Monday night after a discussion, it was decided to wait until the last moment before accepting the PWA plan in the hope that the Thompson plan will be finally approved. Then, during the weekend, a special meeting will be called to put through whatever course of action is indicated.

The major advantage of the Thompson plan, it was declared, is that it brings to the aid of distressed school districts for the first time in history the combined financial help of the Federal, State and local governments. The PWA combines only the Federal and local governments.

The Board unanimously decided to employ a full time construction superintendent on the school building project, at a cost of \$400 to the board. This service will include full-time inspection, preparation of the numerous reports to the PWA and other agencies together with regular reports of progress to the School Board.

ELECT NEW TEACHER At the July meeting of the Board, George H. Painter, of Sabinsville, was elected as teacher of vocational agriculture in the High School, a new course to be developed there during the coming year. Subsequently Mr. Painter did not accept the post, so on Monday night the

Thompson Plan May Aid Borough

45 per cent, or \$54,040 would be an outright grant from the Public Works Administration. The Board fixed their maximum expenditure at \$62,000, and it was revealed Monday that under the Thompson plan the General State Authority would make an outright grant of one-half this amount to Bellefonte, because of the fact that the local school district has reached its legal borrowing capacity. This would leave only \$31,000 remaining to be paid by the district, it was reported.

The system, it was indicated, may not work out in that manner, for it is possible the General State Authority will require the district to provide the entire \$62,000 although such an expenditure would mean that the district would be in debt to its complete legal limit.

Final action on the Thompson plan by the State Legislature is expected to be taken not later than today, and if it is passed Senator Edward J. Thompson, of Phillipsburg, sponsor of the bill, expects to go at once to Washington in an effort to secure \$75,000,000 in Federal funds to put the plan into operation in Pennsylvania. By Saturday of this week, it is expected, it will be definitely known whether or not the plan is to become operative.

The time element in regard to the final approval of the Thompson plan is vital to Bellefonte, for the local school district has only until Monday, August 15, to accept the PWA grant of \$54,040 set aside for the program here.

The picture, in short, is that the board is caught in the middle of the propositions. They are sure of the PWA grant if they accept it before August 15. But if they accept that they can't take advantage of the Thompson plan, which if passed, may mean \$31,000 in additional aid.

Monday night after a discussion, it was decided to wait until the last moment before accepting the PWA plan in the hope that the Thompson plan will be finally approved. Then, during the weekend, a special meeting will be called to put through whatever course of action is indicated.

The major advantage of the Thompson plan, it was declared, is that it brings to the aid of distressed school districts for the first time in history the combined financial help of the Federal, State and local governments. The PWA combines only the Federal and local governments.

The Board unanimously decided to employ a full time construction superintendent on the school building project, at a cost of \$400 to the board. This service will include full-time inspection, preparation of the numerous reports to the PWA and other agencies together with regular reports of progress to the School Board.

ELECT NEW TEACHER At the July meeting of the Board, George H. Painter, of Sabinsville, was elected as teacher of vocational agriculture in the High School, a new course to be developed there during the coming year. Subsequently Mr. Painter did not accept the post, so on Monday night the

Monday night after a discussion, it was decided to wait until the last moment before accepting the PWA plan in the hope that the Thompson plan will be finally approved. Then, during the weekend, a special meeting will be called to put through whatever course of action is indicated.

The major advantage of the Thompson plan, it was declared, is that it brings to the aid of distressed school districts for the first time in history the combined financial help of the Federal, State and local governments. The PWA combines only the Federal and local governments.

The Board unanimously decided to employ a full time construction superintendent on the school building project, at a cost of \$400 to the board. This service will include full-time inspection, preparation of the numerous reports to the PWA and other agencies together with regular reports of progress to the School Board.

ELECT NEW TEACHER At the July meeting of the Board, George H. Painter, of Sabinsville, was elected as teacher of vocational agriculture in the High School, a new course to be developed there during the coming year. Subsequently Mr. Painter did not accept the post, so on Monday night the

Monday night after a discussion, it was decided to wait until the last moment before accepting the PWA plan in the hope that the Thompson plan will be finally approved. Then, during the weekend, a special meeting will be called to put through whatever course of action is indicated.

The major advantage of the Thompson plan, it was declared, is that it brings to the aid of distressed school districts for the first time in history the combined financial help of the Federal, State and local governments. The PWA combines only the Federal and local governments.

The Board unanimously decided to employ a full time construction superintendent on the school building project, at a cost of \$400 to the board. This service will include full-time inspection, preparation of the numerous reports to the PWA and other agencies together with regular reports of progress to the School Board.

ELECT NEW TEACHER At the July meeting of the Board, George H. Painter, of Sabinsville, was elected as teacher of vocational agriculture in the High School, a new course to be developed there during the coming year. Subsequently Mr. Painter did not accept the post, so on Monday night the

Monday night after a discussion, it was decided to wait until the last moment before accepting the PWA plan in the hope that the Thompson plan will be finally approved. Then, during the weekend, a special meeting will be called to put through whatever course of action is indicated.

The major advantage of the Thompson plan, it was declared, is that it brings to the aid of distressed school districts for the first time in history the combined financial help of the Federal, State and local governments. The PWA combines only the Federal and local governments.

The Board unanimously decided to employ a full time construction superintendent on the school building project, at a cost of \$400 to the board. This service will include full-time inspection, preparation of the numerous reports to the PWA and other agencies together with regular reports of progress to the School Board.

ELECT NEW TEACHER At the July meeting of the Board, George H. Painter, of Sabinsville, was elected as teacher of vocational agriculture in the High School, a new course to be developed there during the coming year. Subsequently Mr. Painter did not accept the post, so on Monday night the

Monday night after a discussion, it was decided to wait until the last moment before accepting the PWA plan in the hope that the Thompson plan will be finally approved. Then, during the weekend, a special meeting will be called to put through whatever course of action is indicated.

The major advantage of the Thompson plan, it was declared, is that it brings to the aid of distressed school districts for the first time in history the combined financial help of the Federal, State and local governments. The PWA combines only the Federal and local governments.

The Board unanimously decided to employ a full time construction superintendent on the school building project, at a cost of \$400 to the board. This service will include full-time inspection, preparation of the numerous reports to the PWA and other agencies together with regular reports of progress to the School Board.

ELECT NEW TEACHER At the July meeting of the Board, George H. Painter, of Sabinsville, was elected as teacher of vocational agriculture in the High School, a new course to be developed there during the coming year. Subsequently Mr. Painter did not accept the post, so on Monday night the

Monday night after a discussion, it was decided to wait until the last moment before accepting the PWA plan in the hope that the Thompson plan will be finally approved. Then, during the weekend, a special meeting will be called to put through whatever course of action is indicated.

The major advantage of the Thompson plan, it was declared, is that it brings to the aid of distressed school districts for the first time in history the combined financial help of the Federal, State and local governments. The PWA combines only the Federal and local governments.

The Board unanimously decided to employ a full time construction superintendent on the school building project, at a cost of \$400 to the board. This service will include full-time inspection, preparation of the numerous reports to the PWA and other agencies together with regular reports of progress to the School Board.

ELECT NEW TEACHER At the July meeting of the Board, George H. Painter, of Sabinsville, was elected as teacher of vocational agriculture in the High School, a new course to be developed there during the coming year. Subsequently Mr. Painter did not accept the post, so on Monday night the

Monday night after a discussion, it was decided to wait until the last moment before accepting the PWA plan in the hope that the Thompson plan will be finally approved. Then, during the weekend, a special meeting will be called to put through whatever course of action is indicated.

The major advantage of the Thompson plan, it was declared, is that it brings to the aid of distressed school districts for the first time in history the combined financial help of the Federal, State and local governments. The PWA combines only the Federal and local governments.

The Board unanimously decided to employ a full time construction superintendent on the school building project, at a cost of \$400 to the board. This service will include full-time inspection, preparation of the numerous reports to the PWA and other agencies together with regular reports of progress to the School Board.

ELECT NEW TEACHER At the July meeting of the Board, George H. Painter, of Sabinsville, was elected as teacher of vocational agriculture in the High School, a new course to be developed there during the coming year. Subsequently Mr. Painter did not accept the post, so on Monday night the

Monday night after a discussion, it was decided to wait until the last moment before accepting the PWA plan in the hope that the Thompson plan will be finally approved. Then, during the weekend, a special meeting will be called to put through whatever course of action is indicated.

The major advantage of the Thompson plan, it was declared, is that it brings to the aid of distressed school districts for the first time in history the combined financial help of the Federal, State and local governments. The PWA combines only the Federal and local governments.

The Board unanimously decided to employ a full time construction superintendent on the school building project, at a cost of \$400 to the board. This service will include full-time inspection, preparation of the numerous reports to the PWA and other agencies together with regular reports of progress to the School Board.

ELECT NEW TEACHER At the July meeting of the Board, George H. Painter, of Sabinsville, was elected as teacher of vocational agriculture in the High School, a new course to be developed there during the coming year. Subsequently Mr. Painter did not accept the post, so on Monday night the

Monday night after a discussion, it was decided to wait until the last moment before accepting the PWA plan in the hope that the Thompson plan will be finally approved. Then, during the weekend, a special meeting will be called to put through whatever course of action is indicated.

The major advantage of the Thompson plan, it was declared, is that it brings to the aid of distressed school districts for the first time in history the combined financial help of the Federal, State and local governments. The PWA combines only the Federal and local governments.

The Board unanimously decided to employ a full time construction superintendent on the school building project, at a cost of \$400 to the board. This service will include full-time inspection, preparation of the numerous reports to the PWA and other agencies together with regular reports of progress to the School Board.

ELECT NEW TEACHER At the July meeting of the Board, George H. Painter, of Sabinsville, was elected as teacher of vocational agriculture in the High School, a new course to be developed there during the coming year. Subsequently Mr. Painter did not accept the post, so on Monday night the

Monday night after a discussion, it was decided to wait until the last moment before accepting the PWA plan in the hope that the Thompson plan will be finally approved. Then, during the weekend, a special meeting will be called to put through whatever course of action is indicated.

The major advantage of the Thompson plan, it was declared, is that it brings to the aid of distressed school districts for the first time in history the combined financial help of the Federal, State and local governments. The PWA combines only the Federal and local governments.

The Board unanimously decided to employ a full time construction superintendent on the school building project, at a cost of \$400 to the board. This service will include full-time inspection, preparation of the numerous reports to the PWA and other agencies together with regular reports of progress to the School Board.

ELECT NEW TEACHER At the July meeting of the Board, George H. Painter, of Sabinsville, was elected as teacher of vocational agriculture in the High School, a new course to be developed there during the coming year. Subsequently Mr. Painter did not accept the post, so on Monday night the

Monday night after a discussion, it was decided to wait until the last moment before accepting the PWA plan in the hope that the Thompson plan will be finally approved. Then, during the weekend, a special meeting will be called to put through whatever course of action is indicated.

The major advantage of the Thompson plan, it was declared, is that it brings to the aid of distressed school districts for the first time in history the combined financial help of the Federal, State and local governments. The PWA combines only the Federal and local governments.

The Board unanimously decided to employ a full time construction superintendent on the school building project, at a cost of \$400 to the board. This service will include full-time inspection, preparation of the numerous reports to the PWA and other agencies together with regular reports of progress to the School Board.

ELECT NEW TEACHER At the July meeting of the Board, George H. Painter, of Sabinsville, was elected as teacher of vocational agriculture in the High School, a new course to be developed there during the coming year. Subsequently Mr. Painter did not accept the post, so on Monday night the

Monday night after a discussion, it was decided to wait until the last moment before accepting the PWA plan in the hope that the Thompson plan will be finally approved. Then, during the weekend, a special meeting will be called to put through whatever course of action is indicated.

The major advantage of the Thompson plan, it was declared, is that it brings to the aid of distressed school districts for the first time in history the combined financial help of the Federal, State and local governments. The PWA combines only the Federal and local governments.

The Board unanimously decided to employ a full time construction superintendent on the school building project, at a cost of \$400 to the board. This service will include full-time inspection, preparation of the numerous reports to the PWA and other agencies together with regular reports of progress to the School Board.

ELECT NEW TEACHER At the July meeting of the Board, George H. Painter, of Sabinsville, was elected as teacher of vocational agriculture in the High School, a new course to be developed there during the coming year. Subsequently Mr. Painter did not accept the post, so on Monday night the

Monday night after a discussion, it was decided to wait until the last moment before accepting the PWA plan in the hope that the Thompson plan will be finally approved. Then, during the weekend, a special meeting will be called to put through whatever course of action is indicated.

The major advantage of the Thompson plan, it was declared, is that it brings to the aid of distressed school districts for the first time in history the combined financial help of the Federal, State and local governments. The PWA combines only the Federal and local governments.

The Board unanimously decided to employ a full time construction superintendent on the school building project, at a cost of \$400 to the board. This service will include full-time inspection, preparation of the numerous reports to the PWA and other agencies together with regular reports of progress to the School Board.

ELECT NEW TEACHER At the July meeting of the Board, George H. Painter, of Sabinsville, was elected as teacher of vocational agriculture in the High School, a new course to be developed there during the coming year. Subsequently Mr. Painter did not accept the post, so on Monday night the

Monday night after a discussion, it was decided to wait until the last moment before accepting the PWA plan in the hope that the Thompson plan will be finally approved. Then, during the weekend, a special meeting will be called to put through whatever course of action is indicated.

The major advantage of the Thompson plan, it was declared, is that it brings to the aid of distressed school districts for the first time in history the combined financial help of the Federal, State and local governments. The PWA combines only the Federal and local governments.

The Board unanimously decided to employ a full time construction superintendent on the school building project, at a cost of \$400 to the board. This service will include full-time inspection, preparation of the numerous reports to the PWA and other agencies together with regular reports of progress to the School Board.

ELECT NEW TEACHER At the July meeting of the Board, George H. Painter, of Sabinsville, was elected as teacher of vocational agriculture in the High School, a new course to be developed there during the coming year. Subsequently Mr. Painter did not accept the post, so on Monday night the

Monday night after a discussion, it was decided to wait until the last moment before accepting the PWA plan in the hope that the Thompson plan will be finally approved. Then, during the weekend, a special meeting will be called to put through whatever course of action is indicated.

The major advantage of the Thompson plan, it was declared, is that it brings to the aid of distressed school districts for the first time in history the combined financial help of the Federal, State and local governments. The PWA combines only the Federal and local governments.

The Board unanimously decided to employ a full time construction superintendent on the school building project, at a cost of \$400 to the board. This service will include full-time inspection, preparation of the numerous reports to the PWA and other agencies together with regular reports of progress to the School Board.

ELECT NEW TEACHER At the July meeting of the Board, George H. Painter, of Sabinsville, was elected as teacher of vocational agriculture in the High School, a new course to be developed there during the coming year. Subsequently Mr. Painter did not accept the post, so on Monday night the

Monday night after a discussion, it was decided to wait until the last moment before accepting the PWA plan in the hope that the Thompson plan will be finally approved. Then, during the weekend, a special meeting will be called to put through whatever course of action is indicated.

Board elected Floyd C. Hill, of Johnstown, Ohio, to take his place.

MORE PHYSICAL EDUCATION In compliance with new regulations set up by the Department of Public Instruction the Board acted to provide High School students with more complete physical education and health instruction. With the opening of school in September three periods each week will be devoted to these subjects, and by next year a complete course in this branch of education will be established.

The repairs committee of the board was authorized to proceed with the painting of the Dale building on North Allegheny Street. It also was decided to paint the pillars at the entrance of the High School building, to a height of about eight feet, to cover marks and pencillings by pupils.

INCREASE TUITION FEES Supervising principal Earl K. Stock reported that tuition fees for the coming year would be slightly higher than last year. The rate, as established by the Department of Public Instruction are: For grade pupils, \$3.50, per month. Last year grade pupils paid \$2.55 per month. For High School pupils, \$5.85 per month. Last year the fee was \$5.00 per month.

MAY HAVE MATRON SERVICE Matron service may be in force in the local schools when the coming year's work opens in September. Mrs. Thelma Strassley, supervisor of women's and professional projects of the WPA at DuBois offered such service to the board at practically no cost, as a WPA project. Matrons would be women between 40 and 50 years of age, of good character and pleasing personality. They would be required to pass a rigid medical examination before acceptance.

Their duties would be to clean the girls rest rooms; clean girls' washrooms; keep walls and woodwork in clean and sanitary condition; mend towels and other articles in use in the schools; patrol corridors and entrances, and small children in the cafeteria and similar work. The only cost to the district would be in the purchase of towels, cleaning materials and such equipment, most of which is purchased anyway in the ordinary conduct of the schools.

The Board after considering the matter was favorably impressed with the proposition and instructed the secretary to notify the WPA to prepare an application and deliver it at the next Board meeting so the proposal can be further explained.

The matter of applying to the WPA for an assistant director of the Bellefonte High School Band was discussed but no action was taken. It is probable that this question will be taken up in the near future, since the board has reported that WPA assistant band directors have proved to be highly satisfactory in neighboring towns and cities.

MARKET QUOTATIONS Wheat 57 Oats 58 Buckwheat 50 Rye 50 Barley 50 Corn 50 Provisions, groceries, etc., as reported weekly by Herr & Heverly. Eggs, per dozen 22 Lard, per pound 12

At the hospital last night attendants declared that although it was first believed Mrs. Burton had received a fracture of the ankle, such is not the case, and added that her condition is "fair."

Act To Set Up Authority

of Borough Council.

It was reported that Borough Solicitor M. Ward Fleming was in Harrisburg obtaining further information regarding methods of financing the plant, and one of the items which will be presented to Council at the next regular meeting, scheduled for next Monday evening.

At Monday's session a lengthy discussion was held regarding methods of levying taxes for the maintenance of the proposed plant and for the retirement of bonds to be issued to cover the borough's share of 85 per cent of the total cost of construction. Methods of taxation in use in other boroughs were discussed, but Council reached no agreement as to the method by which taxes will be assessed. Most Councilmen seemed to concur in the belief that a tax based upon the present year tax on each individual property would be the most equitable way of determining sewer rates.

It was reported that there are 1500 properties in the borough to which sewer connections can be made, taking into consideration only those properties situated near the present sewer lines.

9 Lock Haven People Injured In Collision

time after yesterday afternoon's severe rain storm, and the Nittany Valley Highway, of macadam construction, was slippery. The Bush machine was traveling toward Lock Haven and the Williams machine was headed toward Hecla Park.

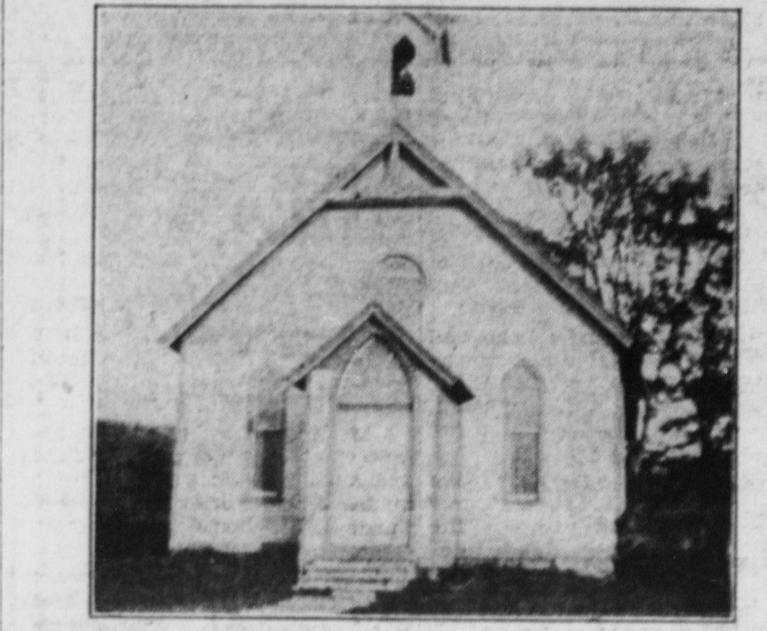
According to the driver of a car who was a short distance ahead of the Williams machine, he noticed the Bush car as it passed him and a moment later heard a crash to the rear. Looking in his rear view mirror he saw the two cars entangled on the road. It is believed that one or both of the drivers of the cars involved lost control of their machines on the rain-soaked road.

State Motor Police officers Amick and Calon, of the Pleasant Gap station had not completed their investigation late last night.

According to reports from Lock Haven, Mr. Bush is apparently quite seriously injured. His face is badly swollen, and while an x-ray examination has been made, surgeons have not definitely decided whether or not the skull is fractured. From the condition of Mr. and Mrs. Bush, it is believed that both were hurled against the windshield of their car by the impact.

Damage was slight and no one was injured about 8 o'clock Sunday morning when cars operated by John E. Dreibeis and Sena M. Confer, both of State College, collided at the intersection of East College avenue and Shortidge road, in State College.

HOME-COMING AT FILLMORE



The fifth annual homecoming of the Fillmore M. E. church will be held August 20 and 21.

The program for this year has been extended somewhat and will include a get-together on the Sellers school grounds on Saturday afternoon, the 20th. There will be games and amusements for everyone, including contests between homecomers and local residents. Supper will be served by the Ladies' Aid in the evening.

Sunday school will open at 9:15 on Sunday morning and will be in charge of former officers and members of the Sunday school. The morning worship will begin at 10:30 and the speaker will probably be a former pastor. Homecoming choir members are invited to sing in the choir for this service.

At the service at 7:30 Sunday evening, Rev. Harry F. Babcock, pastor of the Methodist Episcopal church of State College, will deliver the address. Rev. Babcock will be remembered as a former pastor on the Half Moon circuit.

A cordial invitation is extended to the public to attend any or all of the sessions of the homecoming.

HOWARD DECORATED FOR HOME-COMING WEEK

Everything is in readiness for Howard's first Homecoming Week which will begin Monday and continue through next Saturday.

During the past few days the streets, homes and business places in the community have been attractively decorated for the occasion by the firm of Burridge & Co., of Harrisburg, and by Monday night the town will be garbed in holiday attire, with floodlights at night to provide ample light for the week of festivities.

Monday night is given over to the Democratic party, while on Tuesday night the Republicans will hold sway. Wednesday night will be visitors' night when a special program will be presented in their honor. Details of the festivities for next weekend will be published in full next week.

The Homecoming is being sponsored jointly by the Howard Band and Fire Company.

GINGERY ANNOUNCES TWO ROAD PROJECTS APPROVED

Congressman Don Gingers announces Presidential approval of seven State road projects, two of which are the following in Centre county:

\$25,312.00, to construct road (Commonwealth of Pa. owner property) leading to Black Moshannon Airport from State Route 869, Rush Twp. Project also includes operation of quarries in or near Rush Twp. to produce materials for use on project. Sponsored by Pennsylvania Division of Aeronautics.

\$17,137.00, to improve roads throughout Boggs township, including grading, draining, etc., constructing base and other appurtenances work. Township-owned property. Sponsor: Boggs Twp. Supervisors.

WEIS PURE STORES FOOD Save On Quality Foods!

KLEIN'S COCOA 2-lb can 14c WHEATIES 2 pkgs 23c

BEVERAGES Plus Bot. Dep. 3 lge bots 25c RED KIDNEY BEANS 3 cans 25c ASPARAGUS can 19c

WEIS QUALITY PEACHES SLICED OR 2 NO. 24 CANS HALVES BUY BY THE DOZEN \$1.92 This is the lowest price peaches of this quality have ever been sold.

DOLE ROYAL SPEAR PINEAPPLE No. 2 can 17c WEIS PEAS or CORN 2 cans 25c FANCY MILD CHEESE lb 19c RAINBOW Cleaner qt bot 18c

SARDINES Oil-Mustard or Tom. Sauce can 4c IVORY SOAP med. cake 5c 3 large cakes 25c

QUALITY MEATS! Assorted COLD CUTS lb 21c Jowl Bacon SQUARES lb 15c

BEEF LIVER - lb 19c LEG OF LAMB - lb 27c Canadian Bacon 1/2 lb 26c Put a Can of SPAM in Your Refrigerator for That Unexpected Guest

FLOWERS ARE IDEAL GIFTS for Anniversaries, Birthdays, Illness and all festive occasions. Woodring's Floral Gardens 127 E. Howard St. PHONE 64. Bellefonte, Pa.

GOLDMANS FOOD MARKET Successor to CARPENETO'S "Where Quality and Economy Rule" BROCKERHOFF HOTEL BLDG. PHONE 28 Post Toasties - 2 for 13c Post Bran - 2 for 23c Huskies The Whole Wheat Flake Cereal 2c SPAM - 12-oz. can 29c Shredded Ralston - 2 for