

FACT, FUN AND FANCY.

Bright, Sparkling Paragraphs—Selected and Original. This world is but a withering thing That rushes on through space; It always travels in a ring Back to the same old place.

No man is happy unless he can grove it. Even the sausage should remember that beauty is only skin deep. Running out of cash is the principal cause of running into debt.

There are butterflies and butterflies. Alas, it makes us sigh; 'Tis only at our boarding house We see the butterflier fly.

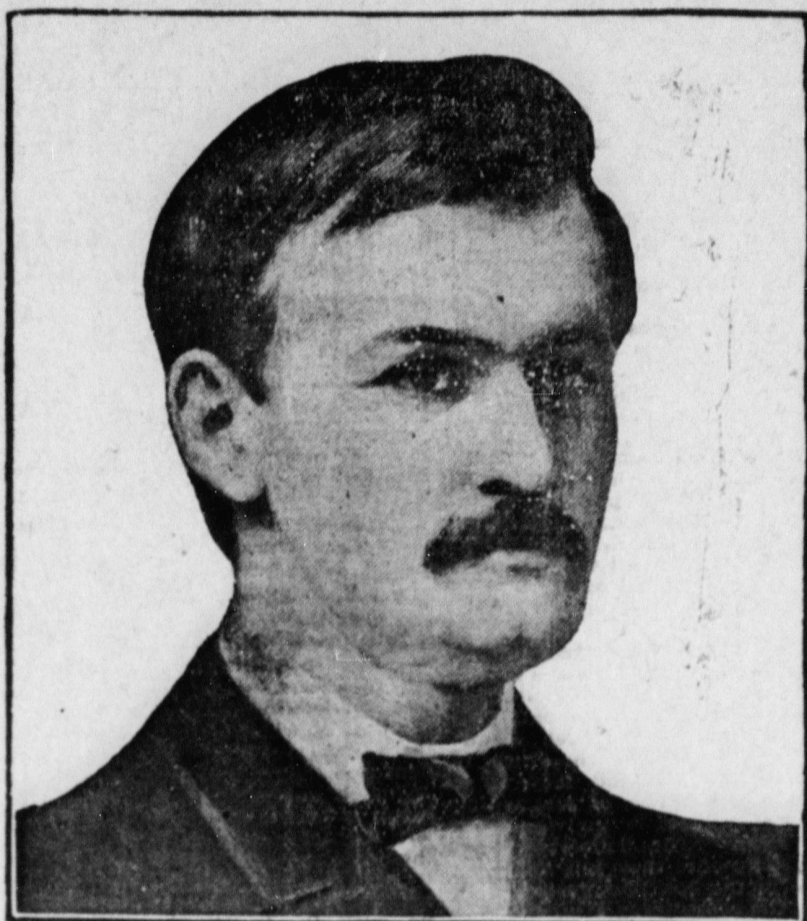
Excellent Idea. A fond mother who was convinced that her daughter, Gwendoline, was destined to be a musical genius, begged a great pianist to hear her play one piece, and he consented.

Ward Lamon was marshal of the District of Columbia, and it was his duty to open the proceedings of the Supreme court. One morning he was ten minutes late and gave an excuse that he had slipped on the ice and tore the seat of his trousers, which necessitated his going back to the hotel for another pair.

Just the Chickens. A southern gentleman was awakened late one night by a loud commotion in the vicinity of his chicken house. Hastily arming himself with a shotgun he sallied forth to investigate.

GOVERNORS OF PENNSYLVANIA.

Portraits of Each Accompanied by Brief Biographical Sketch—Will be Published in Order, One Each Week.



ROBERT EMORY PATTISON—1883-1887—1891-1895.

Robert Emory Pattison was the son of a Methodist Episcopal clergyman and was born in 1850 at Quantico, Md., where his father was stationed at the time.

He was educated in the public schools in Philadelphia and afterward studied law under the Hon. Lewis C. Cassidy. He was admitted to the bar in 1872. Five years later he was elected comptroller of Philadelphia.

He was only twenty-seven years of age at the time, and so successful was his administration that he was re-elected in 1880 by a large majority. Mr. Pattison made a whirlwind campaign when he ran for governor the first time, covering 1,400 miles and speaking in forty counties in two weeks' time.

He was elected by a plurality of over 40,000. Four years later he was re-elected. Each time he was the candidate of the Democratic party. He was defeated for governor in 1902.

WOMEN'S WOES. Bellefonte Women Are Finding Relief. It does seem that women have more than a fair share of the aches and pains that afflict humanity; they must "keep up," must attend to duties in spite of constantly aching backs, or headaches, dizzy spells, bearing-down pains, they must stoop over, when to stoop means torture.

WEDS IN HER NIGHTIE. Society Girl Elopes After Her Parents Hide Clothes. Arrayed only in her night gown and stockings, Miss Columbia Cheek, a prominent member of Atlanta's younger social set, was married at 3 o'clock Tuesday morning to Guy H. Buchanan.

PROPOSED AMENDMENTS TO THE CONSTITUTION SUBMITTED TO THE CITIZENS OF THIS COMMONWEALTH FOR THEIR APPROVAL OR REJECTION.

Number One. A CONCURRENT RESOLUTION. Proposing an amendment to section twenty-six of article five of the Constitution of the Commonwealth of Pennsylvania.

Resolved (if the Senate concur). That the following amendment to the Constitution of Pennsylvania be, and the same is hereby, proposed, in accordance with the eighteenth article thereof.

Section 26. All laws relating to courts shall be general and of uniform operation, and the organization, jurisdiction, and powers of all courts of the same class or grade, so far as regulated by law, and the force and effect of the process and judgments of such courts, shall be uniform; and the General Assembly is hereby prohibited from creating new courts or exercising the powers vested by this Constitution in the judges or Courts of Common Pleas and Orphans' Courts.

Number Two. RESOLUTION. Proposing an amendment to the Constitution of the Commonwealth of Pennsylvania, so as to eliminate the requirement of payment of taxes as a qualification for the right to the office of Representative.

Section 1. Be it resolved by the Senate and House of Representatives of the Commonwealth of Pennsylvania in General Assembly met, That the following amendment to the Constitution of Pennsylvania be, and the same is hereby, proposed, in accordance with the eighteenth article thereof.

Section 6. In the county of Philadelphia all the jurisdiction and powers now vested in the district courts and courts of common pleas, subject to such changes as may be made by this Constitution or by law, shall be in Philadelphia vested in five distinct and separate courts of equal and co-ordinate jurisdiction, composed of three judges each.

Section 7. Be it resolved by the Senate and House of Representatives of the Commonwealth of Pennsylvania in General Assembly met, That the following amendment to the Constitution of Pennsylvania be, and the same is hereby, proposed, in accordance with the eighteenth article thereof.

Section 8. Be it resolved by the Senate and House of Representatives of the Commonwealth of Pennsylvania in General Assembly met, That the following amendment to the Constitution of Pennsylvania be, and the same is hereby, proposed, in accordance with the provisions of the eighteenth article thereof.

Section 9. Be it resolved by the Senate and House of Representatives of the Commonwealth of Pennsylvania in General Assembly met, That the following amendment to the Constitution of Pennsylvania be, and the same is hereby, proposed, in accordance with the provisions of the eighteenth article thereof.

city, borough, township, school district, or other municipality, or incorporated district, except as herein provided, shall never exceed seven per centum upon the assessed value of the taxable property therein, nor shall any such municipality or district incur any new debt, or increase its indebtedness to an amount exceeding two per centum upon such assessed valuation of property, without the assent of the electors thereof at a public election in such manner as shall be provided by law, but any city, the debt of which now exceeds seven per centum of such assessed valuation, may be authorized by law to increase the same three per centum. In the aggregate, at any one time, upon such valuation, so as to read as follows:— Section 8. The debt of any county, city, borough, township, school district, or other municipality or incorporated district, except as herein provided, shall never exceed seven per centum upon the assessed value of the taxable property therein, nor shall any such municipality or district incur any new debt, or increase its indebtedness to an amount exceeding two per centum upon such assessed valuation of property, without the assent of the electors thereof at a public election in such manner as shall be provided by law; but any city, the debt of which now exceeds seven per centum of such assessed valuation, may be authorized by law to increase the same three per centum. In the aggregate, at any one time, upon such valuation, so as to read as follows:—

LEGAL ADVERTISEMENTS. ADMINISTRATOR'S NOTICE. Estate of Nancy C. Bennett, deceased. Letters of administration on the estate of Nancy C. Bennett, late of Worth Township, Centre county, Pa., deceased, have been granted to the undersigned, and he is authorized to sell the real estate of said decedent to whom all persons indebted to said estate are requested to make payment and those having claims or demands will make known the same without delay.

NOTICE FOR THE SATISFACTION OF RECOGNIZANCE. In Re petition of Lewis E. Stover for satisfaction of a Recognizance entered into by Benjamin Kerstetter, Adam Winkelsieck and D. A. Musser in the Matter of Partition Proceedings in the Estate of Leonard Kerstetter, Sr., of Centre County, Pa., and in the Matter of said recognizance recorded in Centre County in Recognizance Docket "A" at page 62, etc.

A JOINT RESOLUTION. Proposing an amendment to the Constitution of the Commonwealth of Pennsylvania, so as to consolidate the courts of common pleas of Allegheny County.

Section 1. Be it resolved by the Senate and House of Representatives of the Commonwealth of Pennsylvania in General Assembly met, That the following amendment to the Constitution of Pennsylvania be, and the same is hereby, proposed, in accordance with the eighteenth article thereof.

Section 2. Be it resolved by the Senate and House of Representatives of the Commonwealth of Pennsylvania in General Assembly met, That the following amendment to the Constitution of Pennsylvania be, and the same is hereby, proposed, in accordance with the eighteenth article thereof.

Section 3. Be it resolved by the Senate and House of Representatives of the Commonwealth of Pennsylvania in General Assembly met, That the following amendment to the Constitution of Pennsylvania be, and the same is hereby, proposed, in accordance with the eighteenth article thereof.

Bezer's Meat Market. HIGH ST., BELLEFONTE, PA. We keep none but the best quality of BEEF, PORK, MUTTON, SLICED HAM All kinds of Smoked Meat, Pork Sausage, etc. If YOU want a nice juicy Steak, go to PHILIP BEEZER

Centre County Banking Co., Corner High and Spring Streets. Receive Deposits; Discounts Notes. John M. Shugert, Cashier.

W. H. MUSSER, GENERAL INSURANCE AGENT, Notary Public and Pension Attorney, BELLEFONTE, PENNA.

Pure Candy. All Candy sold to Retail Dealers by the Camp Candy Company, Manufacturing Confectioners, Tyrone, Pa., are NOT ADULTERATED IN ANY FORM, are strictly pure and are guaranteed to comply with all Pure Food Laws.

Camp Candy Company, MANUFACTURERS, Tyrone, Pennsylvania.

E. K. RHOADS. At his yard, opposite the P. R. R. Passenger station, sells only the best qualities ANTHRACITE AND BITUMINOUS COALS. Also all kinds of—

Wood, Grain, Hay, Straw and Sand. Superior Screenings for lime burning. Builders' and plasterers' Sand. Telephone Calls Commercial No. 1321 Central No. 1321

BUILDING MATERIAL. When you are ready for it, you'll get it here. On LUMBER MILL WORK, ROOFING SHINGLES AND GLASS. This is the place where close prices and prompt shipments of reliable materials get the orders of all who know of them.

BELLEFONTE LUMBER CO., Bellefonte, Pa.

SOMETHING NEW EVERY WEEK. Our Price. Reg. Flour \$1.36 1.50. Fine table syrup 39c 50c. Loose Coffee... 13c 15c. Bakers Chocolate... 19c 25c. Salt-Sack... 3c 5c. Green or Black Tea 25c 40c. Vanilla per bottle, 8-10c 10-25c. Banner Lye 3 for 25c per can 10c. Tomatoes 3 cans... 25c. Prices subject to change. 17 lb sugar... \$1.00. 1 lb. Bak. Powder... 19c 25c. 6 boxes Argo starch... 30c. 18 lb. Dairy salt... 25c. We have too many Fruit Jars and will give you a discount on them.

GILLEN'S GROCERY, Bellefonte.

\$3.50 Kidney Cures Weak Kidneys, Free. Relieves Urinary and Kidney Troubles, Backache, Straining, Swelling, Etc. Stops Pains in the Bladder and Back.

The Bazaar, J. S. GILLIAM, Prop. FOR THIS WEEK WE WILL OFFER: Men's 50c Gause Underwear at 25c; Otis Bros' goods. Plain Balbriggan, what we have left at 19c.

Gilliam's Dept Store. Ladies' Linen Collars, worth from 15c to 25c, all at 10c; Ladies' belts, worth 50c, go this week at 23c. Ladies' Dutch Collars, 10c and 25c. Ladies' Gause Vests, were 15c, go this week at 10c. Towels, 5c, 10c and 25c, great bargains. Sheets, hemmed, 22-36, 42c. Napkins, 49c, 59c, and 69c. White, Red and Blue Bed Spreads, \$1.00 and \$1.15. Princess Dresser, \$1.00 and \$1.25. White Dresser, this week, only \$1.50.

PATENT YOUR IDEAS and make MONEY. JOSHUA R. H. POTTS. 200 Third St., Washington, D. C. U. S. and Foreign Patents. 329 Chestnut St., Philadelphia. 149 Duane St., Chicago.

John F. Gray & Son. Successors to Grant Hoover. Fire, Life and Accident Insurance. CRIDER'S STONE BUILDING, BELLEFONTE. Also Surety Bonds.

HARRY FENLON, INSURANCE. Bonds of every description. Successor to Frederick K. Foster and William Burnside. BELLEFONTE, PA.

ENCAMPMENT EXHIBITION. OF THE PATRONS OF HUSBANDRY OF CENTRAL PENN'A. GRANGE PARK, CENTRE HALL, PA. September 10 to 16, Inclusive. Encampment Opens Sept. 10th. Exhibition Opens Sept. 12th. The largest and best fair in Central Pennsylvania, by farmers and for farmers. Twenty-eight acres devoted to exhibiting and exhibition purposes. Ample tent accommodations for all desiring to camp. A large display of farm stock and poultry; farm implements, fruits, cereals and every production of farm and garden. Admission FREE. Geo. Gierberh, G. L. Goodhart, Com. LEONARD RHONE, Chairman.