

The Centre Democrat.

CHAS. R. KURTZ, - - - PROPRIETOR

FRED KURTZ, SR. (EDITORS) CHAS. R. KURTZ.

CIRCULATION OVER 4000

TERMS OF SUBSCRIPTION:

SUBSCRIPTION - - \$1.50 PER YEAR

Persons who send or bring the money to the office, and pay in advance, \$1 per year.

CENTRE DEMOCRAT clubs with

N. Y. 34-w World for \$1.65 Pittsburgh Stockman for \$1.80 Tribune Farmer..... \$1.25

The date your subscription expires is plainly printed on the label bearing your name. All credits are given by a change of label the first issue of each month. Watch that after you remit. We send no receipts unless by special request. Watch date on your label.

Subscribers changing postoffice address, and not notifying us, are liable for same. Subscriptions will be continued, unless otherwise directed.

We employ no collector. You are expected to send or bring the money to this office.

Democratic County Committee for 1905

- Bellefonte, n. w. J. C. Harper, Bellefonte s. w. Patrick Gherity, " s. w. Geo. K. Meek, " s. w. J. Meyer, Centre Hall Howard Moore, Centre Hall Howard Millesburg James Noll, Millesburg Milheim Pierce Musser, Milheim Phillipsburg 1st w. J. W. Lukens, Phillipsburg " 2d w. Ira B. Howe, " 3d w. E. G. Jones, " S. Phillipsburg Joseph Gates, " State College D. G. Meek, State College Unionville F. J. McDonnell, Flemington

Democratic State Ticket.

- For State Assurer, WILLIAM H. BERRY, of Delaware county. For Justice of the Supreme Court, JOHN STEWART, of Franklin county. For Judge of the Superior Court, JOHN B. HEAD, of Westmoreland county.

County Ticket.

- For Sheriff, ELLIS S. SHAFER, of Miles Twp. For Treasurer, DR. FRANK K. WHITE, of Phillipsburg. For Register, HARRY J. JACKSON, of Bellefonte. For Recorder, JOHN C. ROWE, of Phillipsburg. For Commissioners, JOHN L. DUNLAP, of Spring Twp. C. A. WEAVER, of Penn Twp. For Auditors, JAMES W. SWABB, of Harris Twp. S. H. HOY, of Besser Twp. For Coroner, DR. P. S. FISHER, of Walker Twp.

EDITORIAL.

ABRAHAM V. MILLER certainly has had enough.

WHEN men become chronic office seekers—choke them off, when you vote.

If you are opposed to one set of men filling the offices, go to the polls and vote.

If you want cheaper bridges in Centre county go to the election on Tuesday and vote.

MILLER and Bailey gave Tom Harter about a thousand dollars worth of printing last year.

JOHN ROWE has been a faithful Recorder, and deserves the usual compliment of a second term.

GEN. GRANT fought out and won the great Civil War; but when he asked for a third term the people said it was too much.

EDITOR Harter says the only issue in this campaign for some is "county printing." If you vote the Democratic county ticket it will keep Harter from getting a big pull.

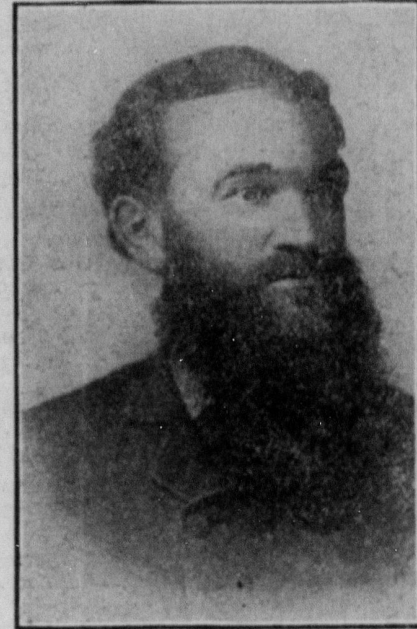
EDITOR HARTER assailed Ellis Shaffer, to defeat him so that the Gazette would get the printing. A vote for Henry Kline means that Tom Harter gets the sheriff's advertising.

REVELATIONS within the past twelve months alone, saying nothing of the past, prove that the G. O. P. in Pennsylvania is corrupt and rotten from top to centre and from centre to bottom. The disclosures within two months, of rascalities committed, are most astounding, running high into millions of money honestly belonging to the public. G. O. P. must stand for Greatest of Plunders.

Get out the Vote.

Dr. P. S. Fisher.

The above named well-known physician, one of the oldest and most successful practitioners in the county, is the nominee on the democratic ticket for Coroner, without any solicitation on the Dr's part. The best evidence of his worth is the high standing he enjoys in his own township of Walker and in all the adjoining townships which are in his field of practice. In his high profession he has been kind, lenient and sympathetic,

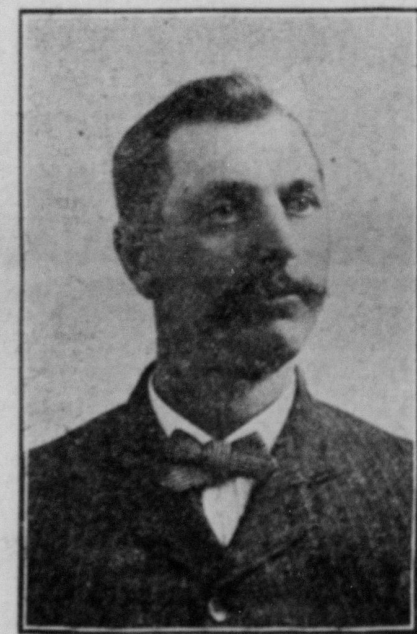


For Coroner, Dr. P. S. FISHER.

with his countless patients without ever having been actuated by extortion. In addition to this he is so proverbially genial, that one only needs to know him to become his friend. His record as a man is straight and clean as a sunbeam, having inherited these noble qualities from his sainted father. Rev. P. S. Fisher, who so long filled the pulpit of the Boalsburg Reformed charge. The Dr. will go in with a large vote, as he so richly deserves.

S. H. Hoy.

It is an old saying, that "a Hoy can never be trusted." S. H. Hoy, of Besser township, is one of the names on the democratic ticket for the office of County Auditor. The Hoy connection in this county is an old and large one, nearly all being farmers, big taxpayers and have born clear records. This is characteristic of the Hoy's. Mr. Hoy, for Auditor,

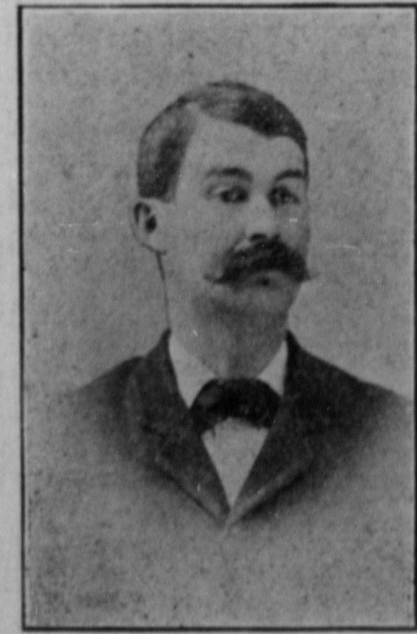


For Auditor, S. H. HOY.

will be one of the right men in the right place. He is possessed of the requisite business qualifications to detect any crookedness in the management of the county's affairs, and has the courage to call a halt upon it. Mr Hoy fills the bill in every particular and his fitness for this important position is so generally known, that tax-payers find they will serve their own best interests, by electing him as an Auditor.

James W. Swab.

James W. Swab is named on the democratic ticket as one of the candidates for County Auditors. Mr. Swab is a gentleman of business qualifications, well fitted for the office of Auditor. Mr. Swab hails from one of our best families, stands in highest esteem in this county and is so generally known that his elec-



For Auditor, JAS. W. SWABB.

tion is a certainty. The office of County Auditor is an important one to the taxpayers, and Mr. Swab is closely identified with the interests of the farmers, of which he is one, and the taxpayers in general, that he deserves to go in with

an overwhelming majority. Every taxpayer in the county should bear these facts in mind when voting in November.

City and Country Joys.

Recently a resident of Washington turned in disgust from the heat, noise and dust of the capital and went into the nearby country to tone up. It is not strange that he went back disgusted again and wrote a stinging criticism upon the suburbs of Washington. He went to the "country," as he called it, and found disorder and squalor. Washington may be an exception, but the fact is that the suburbs of a city cannot be the haven of rest which the city worker needs. It is an old saying that "God made the country and man makes the town." But man has something to do with keeping the great handiwork of the Creator in condition to give happiness to the sojourner therein.

Just why the average city dweller thinks that the country, which to him means any place outside the avenue limits, should welcome him with open arms and nurse him back to health is a mystery. He notes on the advantages and attractions of the city, but it is to be noted that places of entertainment and amusement there are not thrown open to the country folks to drop in free any time they take the notion. All the indispensables for civilized beings which the country holds—the food, the roads, the shelter, the comforting lawns and even the shade—are there because country dwellers provide them, and these things not only cost labor, but involve some sacrifice.

The suburbs of any town may be made like the country if the city folks would take half the trouble which they do to keep up features they like in town. Land is comparatively cheap, lawns and shade are easily produced, and comfort may be enjoyed by paying the price, which is a less price than the country people must put up for the joys of the town. If country people would sordidly pursue the almighty dollar, merely grubbing the ground and letting the surroundings shape themselves, there would be no more joy anywhere than the Washingtonian found in his squalid suburbs. Man finds a barren wilderness and makes it bloom. Vacant lots outside of town may be more hopelessly barren than nature made them, but there are possibilities in them for the seekers after a semblance of country life near home.

"Active Air" For Consumptives.

"Stop fighting germs and treat with 'active air,'" is the advice of Dr. J. C. Ross, a new authority on consumption. In support of his new theory Dr. Ross offers the following:

Assuming that we are at the end of our resources in our efforts to fix the responsibility upon the tubercle bacillus as being the cause of consumption, and admitting, as we must, that all efforts to cure consumption by treating it as a germ disease due to the bacillus tuberculosis have been disappointing, and in view of the further fact that consumption can exist and be real consumption without any one being able to detect the presence of the tubercle bacillus, may we not wisely conclude that, owing to some wasting process, the germs are attracted merely to feed upon the waste products, which, wasting, may depend upon faulty nutrition, from a lack of air or proper aliment or both? Would it not be more rational to treat the cause rather than the effect?

Merely turning a sufferer into the open air is not enough, the doctor declares. The patient must be so treated as to remove all obstructions to complete respiration, and the air must be of a special character. The first step is to expand the lungs, get the muscles in healthy condition and feed the system with healthy food, "rich in fat." The "active air" prescribed is an air that has been prepared by the action of electricity upon oils like eucalyptus and pine needles. This may be inhaled in vast quantities.

Mexico has made peace with the troublesome Yaquis by making important concessions to them which may result in quiet for some time to come, but no prospect of the country they occupy being opened to modern progress is held out. The Yaquis, like the old Boers, are an industrious people, but the get-rich-quick desire does not exist among them. They want to use their land in their own way and will be satisfied to do with less comforts than a part of the people in more progressive sections obtain by wrestling for them.

Out of 108 witnesses heard in Philadelphia in a case where the election officers of a precinct are charged with the commission of gross frauds, no less than 40 testified that they were not citizens of the United States, and yet that their names appeared on the election returns as having actually cast their ballots. In another case it was proved that in a house of bad repute kept by a woman, and having only six rooms, there were 72 voters registered, yet only some two or three men were having a residence there. The woman testified to this and further that the machine police had threatened to stop her business by arrest if she did not permit such a registration of fraudulent names from her house. Thus thousands of similar registrations of fraudulent voters were made with the aid of the police and houses of ill fame used as an agency for such work, and the police gave the places protection. And this is the kind of work Mayor Weaver is trying to break up and honest (?) editor of the Keystone Gazette defends.

Get out the Vote.

FACT, FUN AND FANCY.

Bright, Sparkling Paragraphs—Selected and Original.

A musical crank would operate a street piano.

The most careful men can't always find things where she laid them.

It isn't only when the stock market is dull that you will meet with sharpers.

Even when a girl makes up she may draw the line at penciling her eyebrows.

A man should put his best foot forward, even when he is doing his kicking.

No matter how much we may dislike a hotel proprietor, we can always put up with him.

There is plenty of room at the top, but even the thermometer doesn't use it this time of year.

It is generally easier to discharge a duty than a cook.

You can't save time by preserving all the old calendars.

The man who tries to slip upstairs at 2 a. m. often has a slip up.

Fortunate are they who can fall in love without hurting themselves.

Bachelor quarters don't always look like 30 cents.

One of the most absorbing things in the world is a sponge.

The connecting link between a tin can and a dog is a painful tail.

A fight doesn't always result in a soap factory when the lye is passed.

Many a man will beat his children who is too tender-hearted to beat the carpet.

Jack Frost never seems to get warmed up to his work.

A fellow seldom laughs and grows fat when the laugh is on him.

Success is often a monument constructed of other people's failures.

A man may be on his uppers and still be the sole support of his family.

The President of the Enterprise National Bank of Allegheny says the bank was wrecked by republican politicians—himself being a republican. Two thousand depositors' loose their hard earnings with winter; before the door and their savings for wives and little ones gone! The bank had a capital of \$200,000 and in it the gang leaders put \$1,031,000 of the state's money to speculate and gamble with. That is like putting up \$1000 against \$700! No one but a fool or a rogue would be guilty of that. But in this case it was the rogues who did the business and swamped the state's money along with that of 2000 depositors. Voters, behold the most glaring roguery every heard of. Will you vote to put the state's money in the hands of Plummer, the known hoodler and servant of the corrupt leaders of the gang? November will tell the story and answer this question.

THE PRESIDENT OF THE ENTERPRISE NATIONAL BANK OF ALLEGHENY SAYS THE BANK WAS WRECKED BY REPUBLICAN POLITICIANS—HIMSELF BEING A REPUBLICAN. TWO THOUSAND DEPOSITORS' LOOSE THEIR HARD EARNINGS WITH WINTER; BEFORE THE DOOR AND THEIR SAVINGS FOR WIVES AND LITTLE ONES GONE! THE BANK HAD A CAPITAL OF \$200,000 AND IN IT THE GANG LEADERS PUT \$1,031,000 OF THE STATE'S MONEY TO SPECULATE AND GAMBLE WITH. THAT IS LIKE PUTTING UP \$1000 AGAINST \$700! NO ONE BUT A FOOL OR A ROGUE WOULD BE GUILTY OF THAT. BUT IN THIS CASE IT WAS THE ROGUES WHO DID THE BUSINESS AND SWAMPED THE STATE'S MONEY ALONG WITH THAT OF 2000 DEPOSITORS. VOTERS, BEHOLD THE MOST GLARING ROGUERY EVERY HEARD OF. WILL YOU VOTE TO PUT THE STATE'S MONEY IN THE HANDS OF PLUMMER, THE KNOWN HOODLER AND SERVANT OF THE CORRUPT LEADERS OF THE GANG? NOVEMBER WILL TELL THE STORY AND ANSWER THIS QUESTION.

THE PRESIDENT OF THE ENTERPRISE NATIONAL BANK OF ALLEGHENY SAYS THE BANK WAS WRECKED BY REPUBLICAN POLITICIANS—HIMSELF BEING A REPUBLICAN. TWO THOUSAND DEPOSITORS' LOOSE THEIR HARD EARNINGS WITH WINTER; BEFORE THE DOOR AND THEIR SAVINGS FOR WIVES AND LITTLE ONES GONE! THE BANK HAD A CAPITAL OF \$200,000 AND IN IT THE GANG LEADERS PUT \$1,031,000 OF THE STATE'S MONEY TO SPECULATE AND GAMBLE WITH. THAT IS LIKE PUTTING UP \$1000 AGAINST \$700! NO ONE BUT A FOOL OR A ROGUE WOULD BE GUILTY OF THAT. BUT IN THIS CASE IT WAS THE ROGUES WHO DID THE BUSINESS AND SWAMPED THE STATE'S MONEY ALONG WITH THAT OF 2000 DEPOSITORS. VOTERS, BEHOLD THE MOST GLARING ROGUERY EVERY HEARD OF. WILL YOU VOTE TO PUT THE STATE'S MONEY IN THE HANDS OF PLUMMER, THE KNOWN HOODLER AND SERVANT OF THE CORRUPT LEADERS OF THE GANG? NOVEMBER WILL TELL THE STORY AND ANSWER THIS QUESTION.

THE PRESIDENT OF THE ENTERPRISE NATIONAL BANK OF ALLEGHENY SAYS THE BANK WAS WRECKED BY REPUBLICAN POLITICIANS—HIMSELF BEING A REPUBLICAN. TWO THOUSAND DEPOSITORS' LOOSE THEIR HARD EARNINGS WITH WINTER; BEFORE THE DOOR AND THEIR SAVINGS FOR WIVES AND LITTLE ONES GONE! THE BANK HAD A CAPITAL OF \$200,000 AND IN IT THE GANG LEADERS PUT \$1,031,000 OF THE STATE'S MONEY TO SPECULATE AND GAMBLE WITH. THAT IS LIKE PUTTING UP \$1000 AGAINST \$700! NO ONE BUT A FOOL OR A ROGUE WOULD BE GUILTY OF THAT. BUT IN THIS CASE IT WAS THE ROGUES WHO DID THE BUSINESS AND SWAMPED THE STATE'S MONEY ALONG WITH THAT OF 2000 DEPOSITORS. VOTERS, BEHOLD THE MOST GLARING ROGUERY EVERY HEARD OF. WILL YOU VOTE TO PUT THE STATE'S MONEY IN THE HANDS OF PLUMMER, THE KNOWN HOODLER AND SERVANT OF THE CORRUPT LEADERS OF THE GANG? NOVEMBER WILL TELL THE STORY AND ANSWER THIS QUESTION.

THE PRESIDENT OF THE ENTERPRISE NATIONAL BANK OF ALLEGHENY SAYS THE BANK WAS WRECKED BY REPUBLICAN POLITICIANS—HIMSELF BEING A REPUBLICAN. TWO THOUSAND DEPOSITORS' LOOSE THEIR HARD EARNINGS WITH WINTER; BEFORE THE DOOR AND THEIR SAVINGS FOR WIVES AND LITTLE ONES GONE! THE BANK HAD A CAPITAL OF \$200,000 AND IN IT THE GANG LEADERS PUT \$1,031,000 OF THE STATE'S MONEY TO SPECULATE AND GAMBLE WITH. THAT IS LIKE PUTTING UP \$1000 AGAINST \$700! NO ONE BUT A FOOL OR A ROGUE WOULD BE GUILTY OF THAT. BUT IN THIS CASE IT WAS THE ROGUES WHO DID THE BUSINESS AND SWAMPED THE STATE'S MONEY ALONG WITH THAT OF 2000 DEPOSITORS. VOTERS, BEHOLD THE MOST GLARING ROGUERY EVERY HEARD OF. WILL YOU VOTE TO PUT THE STATE'S MONEY IN THE HANDS OF PLUMMER, THE KNOWN HOODLER AND SERVANT OF THE CORRUPT LEADERS OF THE GANG? NOVEMBER WILL TELL THE STORY AND ANSWER THIS QUESTION.

THE PRESIDENT OF THE ENTERPRISE NATIONAL BANK OF ALLEGHENY SAYS THE BANK WAS WRECKED BY REPUBLICAN POLITICIANS—HIMSELF BEING A REPUBLICAN. TWO THOUSAND DEPOSITORS' LOOSE THEIR HARD EARNINGS WITH WINTER; BEFORE THE DOOR AND THEIR SAVINGS FOR WIVES AND LITTLE ONES GONE! THE BANK HAD A CAPITAL OF \$200,000 AND IN IT THE GANG LEADERS PUT \$1,031,000 OF THE STATE'S MONEY TO SPECULATE AND GAMBLE WITH. THAT IS LIKE PUTTING UP \$1000 AGAINST \$700! NO ONE BUT A FOOL OR A ROGUE WOULD BE GUILTY OF THAT. BUT IN THIS CASE IT WAS THE ROGUES WHO DID THE BUSINESS AND SWAMPED THE STATE'S MONEY ALONG WITH THAT OF 2000 DEPOSITORS. VOTERS, BEHOLD THE MOST GLARING ROGUERY EVERY HEARD OF. WILL YOU VOTE TO PUT THE STATE'S MONEY IN THE HANDS OF PLUMMER, THE KNOWN HOODLER AND SERVANT OF THE CORRUPT LEADERS OF THE GANG? NOVEMBER WILL TELL THE STORY AND ANSWER THIS QUESTION.

THE PRESIDENT OF THE ENTERPRISE NATIONAL BANK OF ALLEGHENY SAYS THE BANK WAS WRECKED BY REPUBLICAN POLITICIANS—HIMSELF BEING A REPUBLICAN. TWO THOUSAND DEPOSITORS' LOOSE THEIR HARD EARNINGS WITH WINTER; BEFORE THE DOOR AND THEIR SAVINGS FOR WIVES AND LITTLE ONES GONE! THE BANK HAD A CAPITAL OF \$200,000 AND IN IT THE GANG LEADERS PUT \$1,031,000 OF THE STATE'S MONEY TO SPECULATE AND GAMBLE WITH. THAT IS LIKE PUTTING UP \$1000 AGAINST \$700! NO ONE BUT A FOOL OR A ROGUE WOULD BE GUILTY OF THAT. BUT IN THIS CASE IT WAS THE ROGUES WHO DID THE BUSINESS AND SWAMPED THE STATE'S MONEY ALONG WITH THAT OF 2000 DEPOSITORS. VOTERS, BEHOLD THE MOST GLARING ROGUERY EVERY HEARD OF. WILL YOU VOTE TO PUT THE STATE'S MONEY IN THE HANDS OF PLUMMER, THE KNOWN HOODLER AND SERVANT OF THE CORRUPT LEADERS OF THE GANG? NOVEMBER WILL TELL THE STORY AND ANSWER THIS QUESTION.

THE PRESIDENT OF THE ENTERPRISE NATIONAL BANK OF ALLEGHENY SAYS THE BANK WAS WRECKED BY REPUBLICAN POLITICIANS—HIMSELF BEING A REPUBLICAN. TWO THOUSAND DEPOSITORS' LOOSE THEIR HARD EARNINGS WITH WINTER; BEFORE THE DOOR AND THEIR SAVINGS FOR WIVES AND LITTLE ONES GONE! THE BANK HAD A CAPITAL OF \$200,000 AND IN IT THE GANG LEADERS PUT \$1,031,000 OF THE STATE'S MONEY TO SPECULATE AND GAMBLE WITH. THAT IS LIKE PUTTING UP \$1000 AGAINST \$700! NO ONE BUT A FOOL OR A ROGUE WOULD BE GUILTY OF THAT. BUT IN THIS CASE IT WAS THE ROGUES WHO DID THE BUSINESS AND SWAMPED THE STATE'S MONEY ALONG WITH THAT OF 2000 DEPOSITORS. VOTERS, BEHOLD THE MOST GLARING ROGUERY EVERY HEARD OF. WILL YOU VOTE TO PUT THE STATE'S MONEY IN THE HANDS OF PLUMMER, THE KNOWN HOODLER AND SERVANT OF THE CORRUPT LEADERS OF THE GANG? NOVEMBER WILL TELL THE STORY AND ANSWER THIS QUESTION.

THE PRESIDENT OF THE ENTERPRISE NATIONAL BANK OF ALLEGHENY SAYS THE BANK WAS WRECKED BY REPUBLICAN POLITICIANS—HIMSELF BEING A REPUBLICAN. TWO THOUSAND DEPOSITORS' LOOSE THEIR HARD EARNINGS WITH WINTER; BEFORE THE DOOR AND THEIR SAVINGS FOR WIVES AND LITTLE ONES GONE! THE BANK HAD A CAPITAL OF \$200,000 AND IN IT THE GANG LEADERS PUT \$1,031,000 OF THE STATE'S MONEY TO SPECULATE AND GAMBLE WITH. THAT IS LIKE PUTTING UP \$1000 AGAINST \$700! NO ONE BUT A FOOL OR A ROGUE WOULD BE GUILTY OF THAT. BUT IN THIS CASE IT WAS THE ROGUES WHO DID THE BUSINESS AND SWAMPED THE STATE'S MONEY ALONG WITH THAT OF 2000 DEPOSITORS. VOTERS, BEHOLD THE MOST GLARING ROGUERY EVERY HEARD OF. WILL YOU VOTE TO PUT THE STATE'S MONEY IN THE HANDS OF PLUMMER, THE KNOWN HOODLER AND SERVANT OF THE CORRUPT LEADERS OF THE GANG? NOVEMBER WILL TELL THE STORY AND ANSWER THIS QUESTION.

THE PRESIDENT OF THE ENTERPRISE NATIONAL BANK OF ALLEGHENY SAYS THE BANK WAS WRECKED BY REPUBLICAN POLITICIANS—HIMSELF BEING A REPUBLICAN. TWO THOUSAND DEPOSITORS' LOOSE THEIR HARD EARNINGS WITH WINTER; BEFORE THE DOOR AND THEIR SAVINGS FOR WIVES AND LITTLE ONES GONE! THE BANK HAD A CAPITAL OF \$200,000 AND IN IT THE GANG LEADERS PUT \$1,031,000 OF THE STATE'S MONEY TO SPECULATE AND GAMBLE WITH. THAT IS LIKE PUTTING UP \$1000 AGAINST \$700! NO ONE BUT A FOOL OR A ROGUE WOULD BE GUILTY OF THAT. BUT IN THIS CASE IT WAS THE ROGUES WHO DID THE BUSINESS AND SWAMPED THE STATE'S MONEY ALONG WITH THAT OF 2000 DEPOSITORS. VOTERS, BEHOLD THE MOST GLARING ROGUERY EVERY HEARD OF. WILL YOU VOTE TO PUT THE STATE'S MONEY IN THE HANDS OF PLUMMER, THE KNOWN HOODLER AND SERVANT OF THE CORRUPT LEADERS OF THE GANG? NOVEMBER WILL TELL THE STORY AND ANSWER THIS QUESTION.

THE PRESIDENT OF THE ENTERPRISE NATIONAL BANK OF ALLEGHENY SAYS THE BANK WAS WRECKED BY REPUBLICAN POLITICIANS—HIMSELF BEING A REPUBLICAN. TWO THOUSAND DEPOSITORS' LOOSE THEIR HARD EARNINGS WITH WINTER; BEFORE THE DOOR AND THEIR SAVINGS FOR WIVES AND LITTLE ONES GONE! THE BANK HAD A CAPITAL OF \$200,000 AND IN IT THE GANG LEADERS PUT \$1,031,000 OF THE STATE'S MONEY TO SPECULATE AND GAMBLE WITH. THAT IS LIKE PUTTING UP \$1000 AGAINST \$700! NO ONE BUT A FOOL OR A ROGUE WOULD BE GUILTY OF THAT. BUT IN THIS CASE IT WAS THE ROGUES WHO DID THE BUSINESS AND SWAMPED THE STATE'S MONEY ALONG WITH THAT OF 2000 DEPOSITORS. VOTERS, BEHOLD THE MOST GLARING ROGUERY EVERY HEARD OF. WILL YOU VOTE TO PUT THE STATE'S MONEY IN THE HANDS OF PLUMMER, THE KNOWN HOODLER AND SERVANT OF THE CORRUPT LEADERS OF THE GANG? NOVEMBER WILL TELL THE STORY AND ANSWER THIS QUESTION.

THE PRESIDENT OF THE ENTERPRISE NATIONAL BANK OF ALLEGHENY SAYS THE BANK WAS WRECKED BY REPUBLICAN POLITICIANS—HIMSELF BEING A REPUBLICAN. TWO THOUSAND DEPOSITORS' LOOSE THEIR HARD EARNINGS WITH WINTER; BEFORE THE DOOR AND THEIR SAVINGS FOR WIVES AND LITTLE ONES GONE! THE BANK HAD A CAPITAL OF \$200,000 AND IN IT THE GANG LEADERS PUT \$1,031,000 OF THE STATE'S MONEY TO SPECULATE AND GAMBLE WITH. THAT IS LIKE PUTTING UP \$1000 AGAINST \$700! NO ONE BUT A FOOL OR A ROGUE WOULD BE GUILTY OF THAT. BUT IN THIS CASE IT WAS THE ROGUES WHO DID THE BUSINESS AND SWAMPED THE STATE'S MONEY ALONG WITH THAT OF 2000 DEPOSITORS. VOTERS, BEHOLD THE MOST GLARING ROGUERY EVERY HEARD OF. WILL YOU VOTE TO PUT THE STATE'S MONEY IN THE HANDS OF PLUMMER, THE KNOWN HOODLER AND SERVANT OF THE CORRUPT LEADERS OF THE GANG? NOVEMBER WILL TELL THE STORY AND ANSWER THIS QUESTION.

THE PRESIDENT OF THE ENTERPRISE NATIONAL BANK OF ALLEGHENY SAYS THE BANK WAS WRECKED BY REPUBLICAN POLITICIANS—HIMSELF BEING A REPUBLICAN. TWO THOUSAND DEPOSITORS' LOOSE THEIR HARD EARNINGS WITH WINTER; BEFORE THE DOOR AND THEIR SAVINGS FOR WIVES AND LITTLE ONES GONE! THE BANK HAD A CAPITAL OF \$200,000 AND IN IT THE GANG LEADERS PUT \$1,031,000 OF THE STATE'S MONEY TO SPECULATE AND GAMBLE WITH. THAT IS LIKE PUTTING UP \$1000 AGAINST \$700! NO ONE BUT A FOOL OR A ROGUE WOULD BE GUILTY OF THAT. BUT IN THIS CASE IT WAS THE ROGUES WHO DID THE BUSINESS AND SWAMPED THE STATE'S MONEY ALONG WITH THAT OF 2000 DEPOSITORS. VOTERS, BEHOLD THE MOST GLARING ROGUERY EVERY HEARD OF. WILL YOU VOTE TO PUT THE STATE'S MONEY IN THE HANDS OF PLUMMER, THE KNOWN HOODLER AND SERVANT OF THE CORRUPT LEADERS OF THE GANG? NOVEMBER WILL TELL THE STORY AND ANSWER THIS QUESTION.

THE PRESIDENT OF THE ENTERPRISE NATIONAL BANK OF ALLEGHENY SAYS THE BANK WAS WRECKED BY REPUBLICAN POLITICIANS—HIMSELF BEING A REPUBLICAN. TWO THOUSAND DEPOSITORS' LOOSE THEIR HARD EARNINGS WITH WINTER; BEFORE THE DOOR AND THEIR SAVINGS FOR WIVES AND LITTLE ONES GONE! THE BANK HAD A CAPITAL OF \$200,000 AND IN IT THE GANG LEADERS PUT \$1,031,000 OF THE STATE'S MONEY TO SPECULATE AND GAMBLE WITH. THAT IS LIKE PUTTING UP \$1000 AGAINST \$700! NO ONE BUT A FOOL OR A ROGUE WOULD BE GUILTY OF THAT. BUT IN THIS CASE IT WAS THE ROGUES WHO DID THE BUSINESS AND SWAMPED THE STATE'S MONEY ALONG WITH THAT OF 2000 DEPOSITORS. VOTERS, BEHOLD THE MOST GLARING ROGUERY EVERY HEARD OF. WILL YOU VOTE TO PUT THE STATE'S MONEY IN THE HANDS OF PLUMMER, THE KNOWN HOODLER AND SERVANT OF THE CORRUPT LEADERS OF THE GANG? NOVEMBER WILL TELL THE STORY AND ANSWER THIS QUESTION.

THE PRESIDENT OF THE ENTERPRISE NATIONAL BANK OF ALLEGHENY SAYS THE BANK WAS WRECKED BY REPUBLICAN POLITICIANS—HIMSELF BEING A REPUBLICAN. TWO THOUSAND DEPOSITORS' LOOSE THEIR HARD EARNINGS WITH WINTER; BEFORE THE DOOR AND THEIR SAVINGS FOR WIVES AND LITTLE ONES GONE! THE BANK HAD A CAPITAL OF \$200,000 AND IN IT THE GANG LEADERS PUT \$1,031,000 OF THE STATE'S MONEY TO SPECULATE AND GAMBLE WITH. THAT IS LIKE PUTTING UP \$1000 AGAINST \$700! NO ONE BUT A FOOL OR A ROGUE WOULD BE GUILTY OF THAT. BUT IN THIS CASE IT WAS THE ROGUES WHO DID THE BUSINESS AND SWAMPED THE STATE'S MONEY ALONG WITH THAT OF 2000 DEPOSITORS. VOTERS, BEHOLD THE MOST GLARING ROGUERY EVERY HEARD OF. WILL YOU VOTE TO PUT THE STATE'S MONEY IN THE HANDS OF PLUMMER, THE KNOWN HOODLER AND SERVANT OF THE CORRUPT LEADERS OF THE GANG? NOVEMBER WILL TELL THE STORY AND ANSWER THIS QUESTION.

THE PRESIDENT OF THE ENTERPRISE NATIONAL BANK OF ALLEGHENY SAYS THE BANK WAS WRECKED BY REPUBLICAN POLITICIANS—HIMSELF BEING A REPUBLICAN. TWO THOUSAND DEPOSITORS' LOOSE THEIR HARD EARNINGS WITH WINTER; BEFORE THE DOOR AND THEIR SAVINGS FOR WIVES AND LITTLE ONES GONE! THE BANK HAD A CAPITAL OF \$200,000 AND IN IT THE GANG LEADERS PUT \$1,031,000 OF THE STATE'S MONEY TO SPECULATE AND GAMBLE WITH. THAT IS LIKE PUTTING UP \$1000 AGAINST \$700! NO ONE BUT A FOOL OR A ROGUE WOULD BE GUILTY OF THAT. BUT IN THIS CASE IT WAS THE ROGUES WHO DID THE BUSINESS AND SWAMPED THE STATE'S MONEY ALONG WITH THAT OF 2000 DEPOSITORS. VOTERS, BEHOLD THE MOST GLARING ROGUERY EVERY HEARD OF. WILL YOU VOTE TO PUT THE STATE'S MONEY IN THE HANDS OF PLUMMER, THE KNOWN HOODLER AND SERVANT OF THE CORRUPT LEADERS OF THE GANG? NOVEMBER WILL TELL THE STORY AND ANSWER THIS QUESTION.

THE PRESIDENT OF THE ENTERPRISE NATIONAL BANK OF ALLEGHENY SAYS THE BANK WAS WRECKED BY REPUBLICAN POLITICIANS—HIMSELF BEING A REPUBLICAN. TWO THOUSAND DEPOSITORS' LOOSE THEIR HARD EARNINGS WITH WINTER; BEFORE THE DOOR AND THEIR SAVINGS FOR WIVES AND LITTLE ONES GONE! THE BANK HAD A CAPITAL OF \$200,000 AND IN IT THE GANG LEADERS PUT \$1,031,000 OF THE STATE'S MONEY TO SPECULATE AND GAMBLE WITH. THAT IS LIKE PUTTING UP \$1000 AGAINST \$700! NO ONE BUT A FOOL OR A ROGUE WOULD BE GUILTY OF THAT. BUT IN THIS CASE IT WAS THE ROGUES WHO DID THE BUSINESS AND SWAMPED THE STATE'S MONEY ALONG WITH THAT OF 2000 DEPOSITORS. VOTERS, BEHOLD THE MOST GLARING ROGUERY EVERY HEARD OF. WILL YOU VOTE TO PUT THE STATE'S MONEY IN THE HANDS OF PLUMMER, THE KNOWN HOODLER AND SERVANT OF THE CORRUPT LEADERS OF THE GANG? NOVEMBER WILL TELL THE STORY AND ANSWER THIS QUESTION.

THE PRESIDENT OF THE ENTERPRISE NATIONAL BANK OF ALLEGHENY SAYS THE BANK WAS WRECKED BY REPUBLICAN POLITICIANS—HIMSELF BEING A REPUBLICAN. TWO THOUSAND DEPOSITORS' LOOSE THEIR HARD EARNINGS WITH WINTER; BEFORE THE DOOR AND THEIR SAVINGS FOR WIVES AND LITTLE ONES GONE! THE BANK HAD A CAPITAL OF \$200,000 AND IN IT THE GANG LEADERS PUT \$1,031,000 OF THE STATE'S MONEY TO SPECULATE AND GAMBLE WITH. THAT IS LIKE PUTTING UP \$1000 AGAINST \$700! NO ONE BUT A FOOL OR A ROGUE WOULD BE GUILTY OF THAT. BUT IN THIS CASE IT WAS THE ROGUES WHO DID THE BUSINESS AND SWAMPED THE STATE'S MONEY ALONG WITH THAT OF 2000 DEPOSITORS. VOTERS, BEHOLD THE MOST GLARING ROGUERY EVERY HEARD OF. WILL YOU VOTE TO PUT THE STATE'S MONEY IN THE HANDS OF PLUMMER, THE KNOWN HOODLER AND SERVANT OF THE CORRUPT LEADERS OF THE GANG? NOVEMBER WILL TELL THE STORY AND ANSWER THIS QUESTION.

THE PRESIDENT OF THE ENTERPRISE NATIONAL BANK OF ALLEGHENY SAYS THE BANK WAS WRECKED BY REPUBLICAN POLITICIANS—HIMSELF BEING A REPUBLICAN. TWO THOUSAND DEPOSITORS' LOOSE THEIR HARD EARNINGS WITH WINTER; BEFORE THE DOOR AND THEIR SAVINGS FOR WIVES AND LITTLE ONES GONE! THE BANK HAD A CAPITAL OF \$200,000 AND IN IT THE GANG LEADERS PUT \$1,031,000 OF THE STATE'S MONEY TO SPECULATE AND GAMBLE WITH. THAT IS LIKE PUTTING UP \$1000 AGAINST \$700! NO ONE BUT A FOOL OR A ROGUE WOULD BE GUILTY OF THAT. BUT IN THIS CASE IT WAS THE ROGUES WHO DID THE BUSINESS AND SWAMPED THE STATE'S MONEY ALONG WITH THAT OF 2000 DEPOSITORS. VOTERS, BEHOLD THE MOST GLARING ROGUERY EVERY HEARD OF. WILL YOU VOTE TO PUT THE STATE'S MONEY IN THE HANDS OF PLUMMER, THE KNOWN HOODLER AND SERVANT OF THE CORRUPT LEADERS OF THE GANG? NOVEMBER WILL TELL THE STORY AND ANSWER THIS QUESTION.

THE PRESIDENT OF THE ENTERPRISE NATIONAL BANK OF ALLEGHENY SAYS THE BANK WAS WRECKED BY REPUBLICAN POLITICIANS—HIMSELF BEING A REPUBLICAN. TWO THOUSAND DEPOSITORS' LOOSE THEIR HARD EARNINGS WITH WINTER; BEFORE THE DOOR AND THEIR SAVINGS FOR WIVES AND LITTLE ONES GONE! THE BANK HAD A CAPITAL OF \$200,000 AND IN IT THE GANG LEADERS PUT \$1,031,000 OF THE STATE'S MONEY TO SPECULATE AND GAMBLE WITH. THAT IS LIKE PUTTING UP \$1000 AGAINST \$700! NO ONE BUT A FOOL OR A ROGUE WOULD BE GUILTY OF THAT. BUT IN THIS CASE IT WAS THE ROGUES WHO DID THE BUSINESS AND SWAMPED THE STATE'S MONEY ALONG WITH THAT OF 2000 DEPOSITORS. VOTERS, BEHOLD THE MOST GLARING ROGUERY EVERY HEARD OF. WILL YOU VOTE TO PUT THE STATE'S MONEY IN THE HANDS OF PLUMMER, THE KNOWN HOODLER AND SERVANT OF THE CORRUPT LEADERS OF THE GANG? NOVEMBER WILL TELL THE STORY AND ANSWER THIS QUESTION.

THE PRESIDENT OF THE ENTERPRISE NATIONAL BANK OF ALLEGHENY SAYS THE BANK WAS WRECKED BY REPUBLICAN POLITICIANS—HIMSELF BEING A REPUBLICAN. TWO THOUSAND DEPOSITORS' LOOSE THEIR HARD EARNINGS WITH WINTER; BEFORE THE DOOR AND THEIR SAVINGS FOR WIVES AND LITTLE ONES GONE! THE BANK HAD A CAPITAL OF \$200,000 AND IN IT THE GANG LEADERS PUT \$1,031,000 OF THE STATE'S MONEY TO SPECULATE AND GAMBLE WITH. THAT IS LIKE PUTTING UP \$1000 AGAINST \$700! NO ONE BUT A FOOL OR A ROGUE WOULD BE GUILTY OF THAT. BUT IN THIS CASE IT WAS THE ROGUES WHO DID THE BUSINESS AND SWAMPED THE STATE'S MONEY ALONG WITH THAT OF 2000 DEPOSITORS. VOTERS, BEHOLD THE MOST GLARING ROGUERY EVERY HEARD OF. WILL YOU VOTE TO PUT THE STATE'S MONEY IN THE HANDS OF PLUMMER, THE KNOWN HOODLER AND SERVANT OF THE CORRUPT LEADERS OF THE GANG? NOVEMBER WILL TELL THE STORY AND ANSWER THIS QUESTION.

THE PRESIDENT OF THE ENTERPRISE NATIONAL BANK OF ALLEGHENY SAYS THE BANK WAS WRECKED BY REPUBLICAN POLITICIANS—HIMSELF BEING A REPUBLICAN. TWO THOUSAND DEPOSITORS' LOOSE THEIR HARD EARNINGS WITH WINTER; BEFORE THE DOOR AND THEIR SAVINGS FOR WIVES AND LITTLE ONES GONE! THE BANK HAD A CAPITAL OF \$200,000 AND IN IT THE GANG LEADERS PUT \$1,031,000 OF THE STATE'S MONEY TO SPECULATE AND GAMBLE WITH. THAT IS LIKE PUTTING UP \$1000 AGAINST \$700! NO ONE BUT A FOOL OR A ROGUE WOULD BE GUILTY OF THAT. BUT IN THIS CASE IT WAS THE ROGUES WHO DID THE BUSINESS AND SWAMPED THE STATE'S MONEY ALONG WITH THAT OF 2000 DEPOSITORS. VOTERS, BEHOLD THE MOST GLARING ROGUERY EVERY HEARD OF. WILL YOU VOTE TO PUT THE STATE'S MONEY IN THE HANDS OF PLUMMER, THE KNOWN HOODLER AND SERVANT OF THE CORRUPT LEADERS OF THE GANG? NOVEMBER WILL TELL THE STORY AND ANSWER THIS QUESTION.

THE PRESIDENT OF THE ENTERPRISE NATIONAL BANK OF ALLEGHENY SAYS THE BANK WAS WRECKED BY REPUBLICAN POLITICIANS—HIMSELF BEING A REPUBLICAN. TWO THOUSAND DEPOSITORS' LOOSE THEIR HARD EARNINGS WITH WINTER; BEFORE THE DOOR AND THEIR SAVINGS FOR WIVES AND LITTLE ONES GONE! THE BANK HAD A CAPITAL OF \$200,000 AND IN IT THE GANG LEADERS PUT \$1,031,000 OF THE STATE'S MONEY TO SPECULATE AND GAMBLE WITH. THAT IS LIKE PUTTING UP \$1000 AGAINST \$700! NO ONE BUT A FOOL OR A ROGUE WOULD BE GUILTY OF THAT. BUT IN THIS CASE IT WAS THE ROGUES WHO DID THE BUSINESS AND SWAMPED THE STATE'S MONEY ALONG WITH THAT OF 2000