

Store Opens 9 A. M.

Closes 5:30 P. M.

Eighty Years of Faithful Service

Philadelphia, Friday, December 29, 1922

GIMBEL BROTHERS
MARKET CHESTNUT · EIGHTH · NINTH

In the **SUBWAY STORE**

GIMBEL BROTHERS
MARKET CHESTNUT · EIGHTH · NINTH

Girls' \$10 to \$13 "Broken-Size" Dresses

To Close Out— at **\$7.50**

Skydrift tweeds—"sporty" and wonderfully soft and pretty. Sweetest velveteens—embroidered—bertha collars. Soft wool crepes—fine French seers— even taffetas—very "new" models. Plenty for each size—6 to 14 years.



Close-Out of Girls' \$12 to \$13.95 Coats at **\$9.95**

Sizes are "broken"—but plenty styles for every size.

Polaris, angora, knotted herringbones. Yes, most have fur collars.

Included at \$9.95—special purchase of perfectly stunning sports coats—a color-checked homespun tweed—we've pictured it!

Sizes, 6 to 14 years.

Infants' \$6.95 Brushed Wool and Knit Sweater Sets at **\$4.95**

Sweater, leggings, tope hat and mittens. White and colors. Sizes, 1 to 4 years.

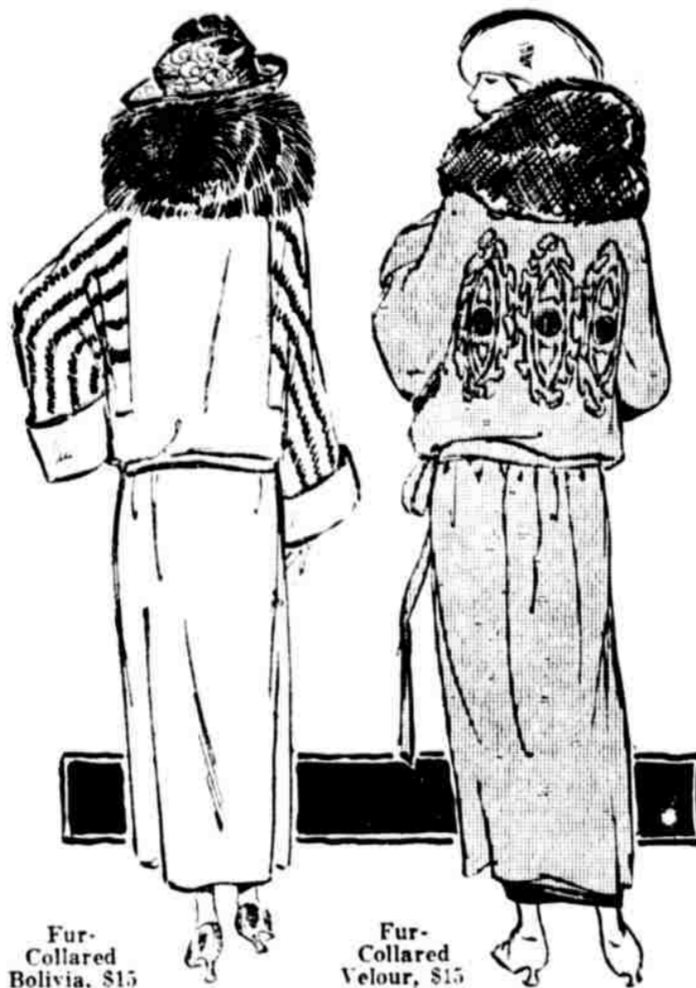
—Gimbels, Subway Store.

Biggest Coat Values— Not Only in 1922, But —in Years

—Bought Maker's Entire Surplus—Bought His Entire Yardage, Too; Had it Made Up by Our Best Models—

On Sale Tomorrow—Subway Store—at

All Sizes 16 to 54 **\$15** Values \$30 to \$50



Fur-Collared Bolivia, \$15

Fur-Collared Velour, \$15

Forty styles to choose from—and a perfect wealth of "samples" besides, that are simply wonders!

Mostly fur-trimmed bolivias and fur-trimmed seal plushes and imported sports coatings—some of the sports coats have fur collars! Some of the bolivia coats have both fur collars and fur cuffs.

And all are silk-lined, except a few of the extra sizes which are "tailor-lined" for extra strength!

Styles? Being "Overcuts" and "Made to Our Order"— Naturally There Is Every Good Model of the Season

Pouch-backs, jacquettes. Straight lines. Wraps, capes, sports coats, embroidered models. Tasselled models. Wrap-arounds. Blouses over-buckle hip styles. Chin collar styles. Shawl collar styles. Wraps with sleeves that start at the very waist-line! Mannish-style sleeves. Raglans. Mandarins.

Misses' sizes—16 and 18 years.

Women's sizes—36 to 54.

Entire Subway Ready-to-Wear Aisles Given Over to the Sale

Quick package service arranged—you can take your coat along to wear Sunday.

—Gimbels, Philadelphia, Subway Store.



Bolivia, Fur-Trimmed, \$15

Imported Sports Coat, \$15

French Seal (Dyed Coney) Coats at **\$69**

—\$30 Below Before-Christmas' Price!

Choice, well-worked skins. Beautifully silk-lined. 46-inch full-flared sports style. Really wonderful for the price!

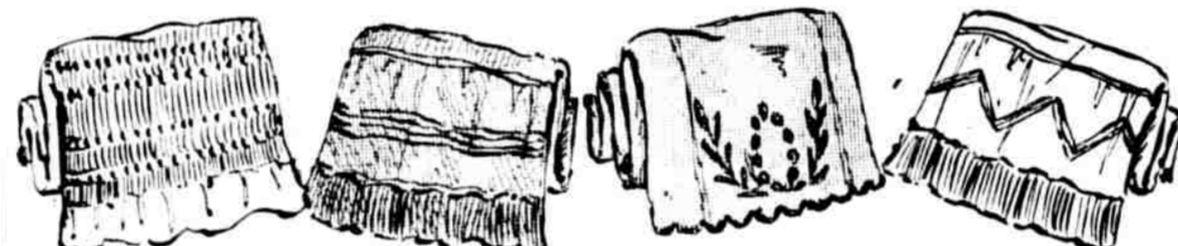
\$25 Fox Scarfs at **\$16.50**

Big, fluffy full-animal style—mounted head—natural tail. Black or taupe.

—Gimbels, Subway Store.

Clearance: Entire Stock of \$1 to \$5 Petticoats and Pantalettes at **75c to \$2.85**

Regular and Extra-Sizes



—at 75c—lustrous sateen pantalettes and attractively-styled petticoats. Black and colors.

—at \$1—Regular and extra-size black sateen petticoats—exceptionally good looking. Also regular size "lingette" bloomers and pantalettes—white, navy, black.

—at \$1.50—"lingette" petticoats—tailored or flounced—black and colors. Also silk-taffeta-flounced petticoats with sateen top. Regular sizes only.

—at \$2.85—really handsome embroidered-and-scalloped petticoats—heavy silk jersey, radiums. Silk jerseys with silk taffeta or messaline flounce.

Extra Sizes Included in Both. Mail Orders Filled

—Gimbels, Subway Store.

\$3 G. B. Corsets at **\$1.85**

New topless models, some finished with elastic bands, some with elastic sections on either side, of pink coutil or silk striped fabric. Sizes 21 to 30.

—Gimbels, Subway Store.

Men's and Women's \$4 Umbrellas, \$2.95

Union taffeta, tape edged, with very attractive handles. Exceptional values.

Children's Fitted Sewing Baskets, 35c

Contain two spools cotton, needles, hooks, eyes and buttons. Remarkable values.

Women's Hemstitched Handkerchiefs, 6 for 39c

Cotton. Have dainty colored embroidery in one corner and are packed in fancy box.

Women's Neckwear, Special at 50c

Hemstitched and lace trimmed linen collar and cuff sets. Eyelet collar and cuff sets and vestee and cuff sets.

Scotch Plaid Brushed Wool Tam and Scarf Sets, \$1.95 Value \$3.95

—Gimbels, Subway Store.

2000 Tricolette and Matelasse Overblouses at **\$1.95**

Regular \$2.95

The "lacy" drop-stitch tricolette model pictured comes in black, navy, bisque, brown and Copenhagen, sizes 36 to 50. (Mail Orders Filled) Also matelasse blouse in black, navy and brown; tinsel or silk stitching. Sizes 36 to 44.

—Gimbels, Subway Store.

Men's Union Suits at **\$1.45**

Heavy Gray Cotton Winter Weights

Men's Merino Union Suits, \$1.45

Gray mixed, part wool, heavy winter weights. Sizes 36 to 46.

Men's Wool-Mixed Socks, 58c

Heather mixtures with stripes.

Children's Waist Union Suits, 85c

Heavy white cotton, slightly flared. Ages 2 to 12 years.

Women's Wool-Mixed Stockings, 68c

Soft and warm; in heather colors; medium and heavy weights.

Children's Vests and Pants, 58c each

Heavy white cotton, slightly flared. Ages 2 to 12 years.

—Gimbels, Subway Store.

Women's \$1.50 Imported Kid Gloves at **\$1**



Two-clasp style, with self or contrasting embroidered backs. Black, white, tan, beaver, gray all sizes. \$1.50 values at \$1.

Women's Strap-Wrist Gloves at \$1.65

These were \$2.50 recently, gray mocha with embroidered backs, also capekin in the lot. A truly remarkable value at \$1.65.

—Gimbels, Subway Store.

Sale of Men's Woven and Corded Striped Madras Shirts at **\$1.50**



Real bargains! The sturdy but smart kind demanded by careful dressers.

Men's Fiber-Silk Mufflers, \$1.95 Less Than Half Price

Slight misweaves make this price possible. "Ide" Brand Starched Collars, 2 for 25c. Four good styles.

—Gimbels, Subway Store.

500 Pairs Cotton Blankets at **\$1.88 a Pair**

Regularly \$2.50

Double and size. Gray or white with pink or blue borders. Not enough for mail or phone orders.

Extra-Weight Comfortables at \$3.95 each

Cotton-filled, seroll-stitched, wide sateen borders. Cotton filled.

100 Pairs Extra-Size Woolen Blankets, \$7.50 a pair

Regularly \$9.75

Extra weight, 6 lbs. to the pair. Wool-and-cotton mixed. 72x90 inches. Save \$2.25 on every pair at \$7.50.

—Gimbels, Subway Store.

Just 85 Sturdy Waterproofed Suit Cases at **\$2.95**

Regularly Sold From \$3.95 to \$4.50

Leather corners. All-around straps, inside shirt pocket with straps, cloth lined; 24 inches long. Brown and black.

—Gimbels, Subway Store.

Indestructible Pearl Bead Necklaces, **\$2.95**

Value \$6.50

24-inch graduated string of exceptionally finely finished pearls. Solid gold clasp.

—Gimbels, Subway Store.

Sale of 482 Men's Raincoats

To Be Cleared **\$2** Worth \$6.50 and \$8.50

Out at—

As a year-end special we're going to practically give these choice raincoats away at the low price of \$2.

Tans and grays.

Plaid linings. And all are shower-proof.

All sizes. \$2. Come early for best "picking."

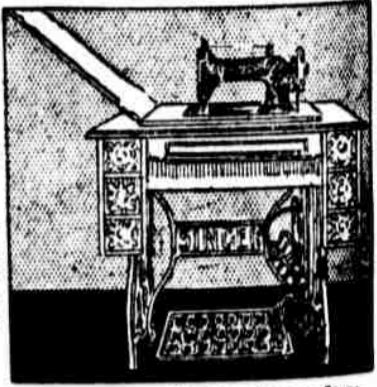
—Gimbels, Subway Store.

Just 38 Sewing Machines At Less Than **\$15** Half Price—

A Choice of Singer, Domestic and Wheeler & Wilson Machines

This is one of those rare occasions that bring practical makes of sewing machines at practically less than original cost of production. All in perfect running order.

Terms \$1 Weekly



—Gimbels, Subway Store.

\$24 Seamless Tapestry Brussels Rugs at **\$16.50**

All-wool face Oriental patterns, for hard wear.

9 x 12 feet Wool-and-Fiber Rugs at **\$11.75**

Inexpensive and durable, pretty patterns. A special purchase from a Philadelphia manufacturer at a full third saving. 9x12 ft. at \$11.75. Value \$18. Other sizes in proportion.

Congoleum Squares

at less than half price, because they have no borders.

9x12 ft., \$8.50

9x10 1/2 ft., \$6

9x9 ft., \$5.50

7 1/2 x 9 ft., \$5

6x9 ft., \$3.50

—Gimbels, Subway Store.

Marquisette and Voile Half-Sash Curtains, **29c a pair**

Remarkable Value

Ready to hang—made of excellent material, with 2-inch beaded hem. No mail or phone orders.

Egyptian Lace Window Panels, \$1 each

2 1/4 yards long; ecru only. Have 3-inch black thread trimmed fringe.

Opaque Oil Window Shades, 55c each

Manufacturers' samples of much higher-priced grades. Slight seconds. Plenty of the desirable green.

—Gimbels, Subway Store.

31-Piece Dinner Sets—Complete for Six Persons, **\$3.95**

Regularly \$6.95

In flower-basket design and bluebird design. Consists of 6 dinner plates, 6 bread and butter plates, 6 dessert saucers, 6 tea cups, 6 tea saucers and 1 meat dish. Open stock.

Thin-Blown Glass Table Tumblers, \$1 a dozen

Your Initial Engraved Free in Old English

Refreshment Glasses, as Pictured **25c and 35c each**

Valued at 50c to 75c

Dainty light-out design in several charming patterns. 3- and 4-ounce sizes.



—Gimbels, Subway Store.