

Store Opens 9 A. M. Closes 5:30 P. M.
The Store of a Million Gifts
GIMBEL BROTHERS
MARKET · CHESTNUT · EIGHTH · NINTH

Page of Subway Store News

Philadelphia, Friday, December 1, 1922
Eighty Years of Faithful Service
GIMBEL BROTHERS
MARKET · CHESTNUT · EIGHTH · NINTH



A Wonderful Lot of Women's Smart High Shoes
\$2.65 and \$3.45
Brand New \$8, \$10 and \$11 Shoes from the Famous Thomas G. Plant Co.

Mail Orders Filled

Sold to us at a decided discount because they are slightly factory "damaged"—but all are clean, fresh, fine shoes—not "shopworn." All desirable clean-cut styles.

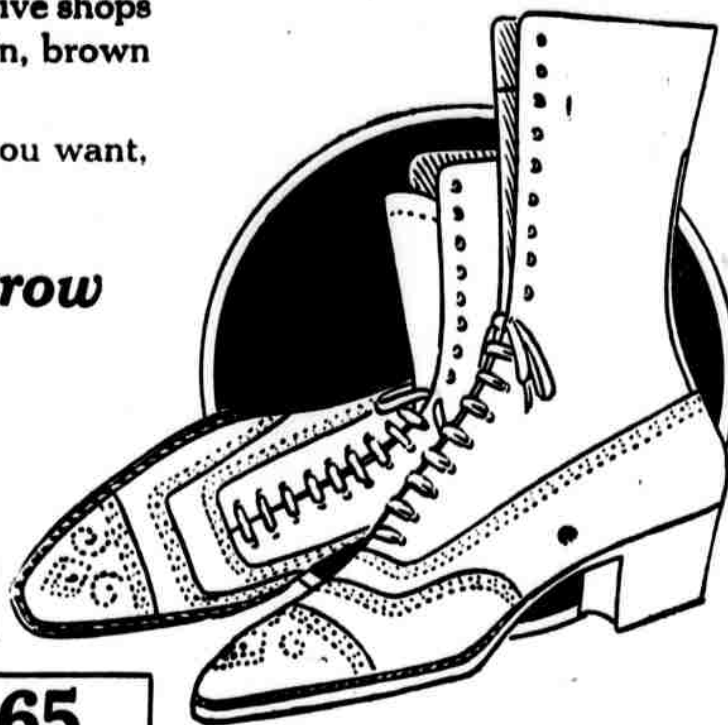
For business—for walking—for dress—for every type foot; in all sizes.

Leathers you'd find in shoes sold at exclusive shops at a much higher price. Tan and black calfskin, brown and black kid and good solid gunmetal.

You'll be sure to find the style and size you want, no matter what it is!

\$2.65 and \$3.45—Tomorrow

And 2980 Pairs of Good Sturdy, Tan Calf Shoes For CHILDREN \$1.85
Sizes up to 2



1862 Pairs of Men's Welt Shoes, **\$3.65**
Plenty of Tan Calf, at—

—Gimbels, Subway Store

Wear It as a Short Jacket—
or as a Full-Length Coat—
Even Novelty-Styles Included
in the Sale of Women's and Misses' **\$39.75 to \$45**

Coats
at
\$22



The new "Balkan blouse" jackets of fabric-fur—with their great metal-buckles and their wonderful sleeves—these new jackets are the most popular things in New York, in Chicago—in Philadelphia!

But the best part about the pictured coat is that there's a "skirt" that loop-buttons on to the jacket and makes it into one of the prettiest full-length coat-models of the season!

Coat-Styles
Wrap-Styles
And Cape-Styles

of bolivias—of seal-plushes—of wool-velours.

All dressy models.

Embroidered models. Even beaded models. Even tasseled styles. Even "pouch-backs." Even panel backs. Even draped styles. Even wrap-around styles.

And all sizes—misses' and women's—and even extra sizes!

—Gimbels, Subway Store

\$89 Fur Coats
Special at

\$69

Mail Orders Filled

French Seal (dyed coney), exceptionally fine, heavy skins—well matched.

40-inch lengths.

Cut plenty full for a good "flare."

Large shawl collar of its own fine skins—wide-cuff sleeves with "windshields." Beautifully silk-lined. Sizes 36 to 44.

—Gimbels, Subway Store



Girls' Exceptionally Good Coats
at **\$9.95**

Sports models—smart as smart as can be! Semi-sports styles with soft fur collars that fasten way up high. Splendid, warm coatings—herringbones, chinchilla cloth, polaires, invisible checks. Sizes 6 to 14 years.

Girls' Sweetest Velveteen Dresses
at **\$9.50**

Hand-embroidered in silk and wool—the prettiest, most unusual embroidered models we've seen anywhere near the price! All are fine twill-back velveteen. Sizes 6 to 14 years.

—Gimbels, Subway Store



Splendid Coats for Children

2 to 6 years

at **\$4.95**

Wonderful Values!

Fine, warm, serviceable coatings. Lined throughout. Many fur-collared and styled liked older sister's.

"Panty Dresses," Rompers, Creepers Special at \$1

Good gingham and chambrays—and the cutest styles! Sizes 1 to 6 years.

—Gimbels, Subway Store



Sale of Men's Winter Suits and Overcoats

All Suits Have Extra Pair of Trousers

\$18.75
Values to \$30

The kind of clothes that give a man a feeling of pride and satisfaction—and within the reach of practically every man's purse!

The Suits at \$18.75

Single- and double-breasted, two- and three-button models. Pin stripes, herringbones, checks, heather mixtures, light, medium and dark materials. Well tailored; many good sports models. Value \$30.

The Overcoats at \$18.75

Usters, Ulsterettes, Balmorals and Raglan models; also brown coats and very conservative styles. Exceptionally well tailored with all seams piped and bound. Value \$30.



—Gimbels, Subway Store

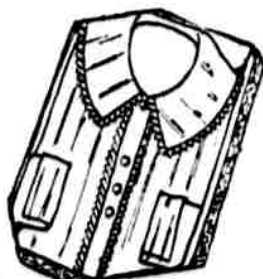
1000 Dimity Blouses

at **\$1**

Regular \$2 Waists

Youthful "Peter Pan" styles—tailored tuxedo-collar models. Made like higher-priced waists, too, and carefully finished. Sizes 36 to 44. Holly-boxed for the asking. Mail orders filled.

—Gimbels, Subway Store



Men's \$2.50 Cape and Mocha Gloves, \$1.50

Lined and unlined. Heavy capeskin and gray mocha with Paris-point backs. All sizes.

Women's \$2.50 Gloves, \$1.59

Strap-wrist capeskin in tan, heaver and brown with embroidered backs. Very exceptional values. All sizes.

Children's \$1 Fleece-Lined Gauntlets, 58c

Astrakhan back kid gauntlets, fleece-lined fabric gloves and mitts with fur tops. All sizes.

—Gimbels, Subway Store

Sale of 1500 Men's Shirts
at **\$1**

Saturday Special



\$1.50 and \$2 Shirts taken from our regular stock. Madras and percale in well-tailored, attractive styles. \$1.

Four-in-Hand Ties 3 for \$1, or 35c Each
Less than half price! In desirable patterns and colors—the kind you'll like to give.

A worthwhile sale, especially with gift time so near!

—Gimbels, Subway Store

2200 Envelope Chemises \$1
Special at—**1**

10 Styles—Built-up Shoulder—Bodice Tops

Beautifully trimmed with fine lace—embroidery inserts—ribbon, and trimmed in back as well as in front. Fine lingerie cloth in pink or white. Some extra-size styles in the lot. Mail orders filled.

—Gimbels, Subway Store



500 Garter Brassieres
at **55c**



With the side front fastening and long front with supporters attached. Of durable flesh-colored fancy materials. A very popular garment at a new low price, 55c.

—Gimbels, Subway Store

Sports Knickers for Women
\$2.50



Well made of good tweed, with adjustable knee and belt and re-enforced seams. \$2.50.

—Gimbels, Subway Store

Boys' Norfolk Suits, Overcoats, Mackinaws
\$7.50 ^{\$10 at} **Other Stores**

Norfolk Suits have extra full-lined trousers. Of chevrons, cassimeres, tweeds, checks, stripes; well tailored in smart styles. Value \$10.

Big Boys' Overcoats (11 to 17) and Junior Overcoats (3 to 10)

Strong, serviceable and very dressy. Full cut, double-breasted, convertible collar, plain or plaid lined. Many colorings and styles. Value \$10.

Mackinaws of heavy-weight plaid or plain gray cloth. Full double-breasted, with muff and patch pockets, at \$7.50.



—Gimbels, Subway Store