

**HONG FOOK CO.**  
Latest Importations of  
Chinese and  
Japanese Novelties  
Fine Chinese Teas  
213 N. 10th St., Phila.

**STORE ORDERS**  
Enable You to  
Buy Anything Anywhere and  
Pay Up on Easy Terms  
**S. R. WEAVER, Inc.**  
1112 CHESTNUT ST.  
Rooms 21 and 22

**JONES' SHOES**  
Arch Support Shoes  
2752 Germantown Ave.  
Ladies' Finest Vici Kid Comfort  
Shoes, with Steel Arch Support,  
Rubber Heels Attached.  
Real Nature's Comfort \$3.85  
All sizes, 1/2 from 2 1/2 to 4 1/2.  
All widths 1 to 10, at

**TAPESTRIES**  
WITH OR WITHOUT NEEDLEPOINT  
FOREIGN or Domestic  
at RIGHT PRICES  
Rugs, Carpets, Cushions, Portieres,  
The Assortment in a Square  
STAFFED BY ARTISTS  
CANADIAN HEMPUS BAGS  
IN ALL COLORS  
CIGAR, BREAD, WOOL  
Germantown Novelty Shop  
2752 CHESTNUT AVE. (21st St.)

**Wicker Furniture**  
Beautiful new effects  
for porch or indoor  
use. Novelty designs  
and best workmanship.  
Sold direct at makers'  
prices.  
B.B. Don. Chairs, \$5.50  
side Arm Chairs, 7.50  
St. George Chairs, 8.50  
Rockers on Each Chair, \$1 Extra  
Novelties in wicker, linen and table  
cloth items.  
Glassberg Wicker Mfg. Co.  
3018 N. Front St. Philadelphia  
Open Even. Phone Diamond 2303

**First Aid**  
to  
Broken Dolls  
**Doll Hospital.**  
Broken Dolls  
Repaired and Made  
to Look Like New  
Parts, Wigs, Rubber, etc.  
**Frank Kiesling**  
2139 Germantown Ave.

Large Assortment of Dolls,  
Toys, Coaches, Etc.

**READ**  
**THE ADVERTISEMENTS**  
where you can  
get the best  
values, then  
get your Store  
Orders from  
Write for Details  
**MARROTT BROS.**  
1111 CHESTNUT STREET

**DIAMONDS—JEWELRY**  
New designs, particularly desir-  
able for gift purposes. Our  
**Confidential Credit Plan**  
Extends cash advantages  
and convenient payments.  
**A. Simon & Sons**  
135 South 13th St.  
Near Walnut St.

**Our Made-up**  
**COATS**  
and  
**WRAPS**  
Actual Values  
to \$225  
**\$150**  
For a Quick  
Disposal!

Originations that bear  
the stamp of individ-  
uality and charm, ex-  
pertly developed of  
soft, clinging mate-  
rials and rich furs.  
**Removal Sale**  
We are clearing stocks be-  
fore moving into our new,  
larger quarters at  
1113 Walnut St.

**Victor**  
CREATOR  
OF STYLES  
1115 Walnut Street

**Mrs. Wilson Tells  
Menu for Week-End**  
Several Novel Ways of Making  
the Potato Different Will  
Prevent the Family From  
Tiring of It

By **MRS. M. A. WILSON**  
Copyright, 1922, by Mrs. M. A. Wilson. All  
rights reserved.

THE November market stalls are  
loaded down with splendid quality  
of early winter produce. The late  
growing season, and crops beginning to  
come from Bermuda and West India's  
markets, bring this bounteous and  
ample supply of fruits and succulent  
green vegetables.

This week the menu for three meals  
on Sunday is as follows:

**Sunday Breakfast**  
Grapes  
Cereal and Cream  
Scrambled Eggs With Bacon  
Potato Pancake  
Rolls and Coffee

**Dinner**  
Clear Tomato Soup  
Celery Homemade Pickles  
Barbecue of Rabbit Cranberry Jelly  
Potato Pudding Mashed Turnips  
Horshoe Tomato Salad  
Cherokee Pudding Coffee

**Supper**  
Potato Salad Bacon and Egg Garnish  
Sliced Tomatoes  
Apple Sauce Gingerbread  
Tea

**Potato Pancake**  
Pare and grate six medium-size po-  
tatoes.  
Place in bowl  
One egg.  
One-half cup of scater.  
One teaspoon of salt.  
One-half teaspoon of pepper.  
One tablespoon of grated onion.  
Two tablespoons of finely minced  
parsley.

**The potato mixture.**  
One and one-quarter cups of flour.  
Three level tablespoons of baking  
powder.  
Beat to mix, and fry in the bacon  
drippings in the usual pancake man-  
ner.

**Barbecue of Rabbit**  
Have the butcher skin the rabbits;  
then wash well in cold water, wipe dry,  
place in large baking pan, and dust  
well with flour. Place in hot oven and  
brown well; then reduce the heat to  
moderate, and commence to baste with  
the following liquid:

Place in saucepan  
One quart of boiling water.  
One pound of butter.  
One-half cup of grated onion.  
One teaspoon of thyme.  
One teaspoon of poultry seasoning.  
One tablespoon of black pepper.  
One cup of strong cider vinegar.

Bring this mixture to boiling point  
and cook for five minutes. Then use  
to baste the rabbits while cooking. Cook  
the rabbits one and one-half hours in  
a slow oven, basting every five minutes.  
When rabbits are cooked lift to hot  
platter, dust well with paprika or black  
pepper, garnish with parsley and serve.  
Use gravy in pan to serve with rabbits.

**Cherokee Pudding**  
Pare and cut in dice four medium-  
size apples. Place in bowl and add  
one-half cup of candied citron,  
chopped fine.  
One cup of seedless raisins.  
One cup of chopped nuts.  
Now place in mixing bowl  
One cup of molasses.  
One-half cup of shortening.  
Two well-beaten eggs.  
Three-quarters cup of black coffee.  
One teaspoon of each, cinnamon and  
ginger.

One-half cup of cornmeal.  
Two cups of flour.  
Two level tablespoons of baking  
powder.  
The prepared fruit.

Mix well and turn in well-greased  
and floured Boston brownbread mold  
and steam for two hours.  
This pudding is best when made on  
either Friday or Saturday.

To serve, cut in slices and lay in  
baking pan that has been greased and  
floured. Now place in small bowl  
one-half cup of molasses.  
Two tablespoons of vinegar.  
Six tablespoons of water.

Blend well and pour over the slices.  
The Cherokee pudding and bake for  
fifteen minutes. Lift to dessert plate  
with griddle cake turner, and pour  
over vanilla sauce; garnish with spoon-  
ful of apple sauce.

**THE HOME  
IN GOOD TASTE**  
By Harold Donaldson Eberlein



**Treatment of Country Houses**

As more people constantly appre-  
ciate the joy of country life, the coun-  
try house becomes more and more an  
interesting problem. The treatment of  
a house in the country can always be a  
bit more liberal than that of a city  
house.

One designer of which the writer  
knows chose to bring the flower gar-  
den into the house. One guest room  
became a naturium room, with tones  
of yellow and flame in walls and hang-  
ings subdued by the cool green gray of  
the under side of a naturium leaf.

Another brought the delight of a  
bunch of sweet peas into constant re-  
membrance with organdie curtains, bed  
covering and dressing table cover in  
ruffled organdie of pale and deeper rose  
lavender and rose. The walls were a  
very soft gray with a tinge of blue; the  
carpet gray with a tone of rose. The  
furniture was white.

One can go on endlessly taking a  
leaf from nature's book for one's com-  
binations, always remembering that  
grays toned with color help to add a  
restful note to all color combinations.  
Gray should not, however, be used in  
any quantity in rooms having a north-  
ern exposure. Here cream, soft yellow  
and buff may give a constant illusion of  
warmth and sunshine.

You will find endless possibilities in  
your garden. Choose a well-bodied  
color, such as a dolphinium, a poppy,  
etc. Look around in the garden for  
graduated shades of whatever color you  
pick out, select your contrasting color,  
and your scheme will work out success-  
fully.

**The Ink of Quality**  
Waterman's Fountain Pen Ink  
for use in fountain pen or regular commercial  
work. Made of the best ingredients and  
fully guaranteed.  
Qts., \$1.25  
1/2-pt., 45c  
2-oz., 10c  
Pts., 75c  
4-oz., 20c

**YEO & LUKENS CO.**  
STATIONERS - PRINTERS - BLANK BOOK CO.  
12 N. 13th St. PHILADELPHIA 719 Walnut St.

**Philadelphia's Leading Rug House—In Every Sense of the Word**

**Hardwick & Magee's  
Offer**

THIS WEEK A REMARKABLE SHOWING OF  
BEAUTIFUL SARUK RUGS

These rich, colorful masterpieces of the Persian  
Weaving Art were personally selected by our  
buyer. In the assortment which we are show-  
ing will be found beautiful specimens ranging  
from mats to carpet sizes of fifteen by twenty-  
five feet.

And as usual in this store the prices are entirely in  
keeping with the values offered—many of them far  
below the present market.

While the range of offerings is at this time complete,  
we advise an early selection. These rugs will not remain  
on our floor long at these prices:

2 ft. x 3 ft. .... \$ 45.00 8 ft. 9 in. x 12 ft. 8 in. \$775.00  
3 ft. x 5 ft. .... 135.00 9 ft. 6 in. x 11 ft. 9 in. 1050.00  
4 ft. 4 in. x 7 ft. 2 in. 175.00 10 ft. 8 in. x 13 ft. 9 in. 1500.00  
6 ft. 4 in. x 9 ft. 1 in. 575.00 12 ft. x 16 ft. 2 in. 3250.00  
8 ft. x 9 ft. 6 in. .... 775.00 13 ft. 1 in. x 22 ft. 11 in. 4500.00

Backgrounds in deep rose, mulberry, ruby red and rare  
shades of blue. Pattern effects in many rare and rich  
color combinations.

**HARDWICK & MAGEE CO.**  
1220 MARKET ST.

**Diamonds-Watches-Jewelry**  
Lowest Prices in Town  
**Buy Now** **Begin**  
**THE BIG XMAS**  
SALE IS NOW IN FULL  
SWAY AT THE BIG STORE  
RAISE TAXES  
Small  
Deposit  
Will Hold  
Any Article

Unheard-of assortment of fine Jewelry and Watches  
at your disposal—cases fairly overflowing with beau-  
tiful surprises. Your business is bigger than any  
time in our career, due, of course, to the implicit  
confidence folks have in us.

**PRICES NEVER WERE SO LOW**  
**TERMS NEVER SO LIBERAL**

M. Simon's plan is to sell large quantities of  
jewelry, thereby saving Philadelphia's thousands of  
dollars each year. Terms are so liberal that  
no one should hesitate buying now. We are  
anxious for your account.

**COURTESY TO LADIES**  
We are proud of the great number of  
ladies who deal here. Utmost courtesy  
is the secret of their confidence in us.

**ALL YOU NEED IS  
AN HONEST FACE**  
OPEN SATURDAY  
EVENINGS  
TIL 10 P. M.

**Perfect Cut  
Blue White  
DIAMOND**  
A remarkable diamond  
that any woman would  
cherish. Special price  
**\$29.75**  
50c a Week

**ELGIN WRIST  
WATCH**  
Fully Guaranteed  
20-Year Gold Filled Case  
A beautiful Wrist Watch, fully  
guaranteed—jewel mounted—  
your choice of gold-trimmed  
ribbon or gold-link bracelet.  
**\$28**  
50c a Week

**ROGERS  
SILVER**  
25 pieces quadruple  
plated, guaranteed a  
lifetime, choice of 25  
styles.  
**\$50c A WEEK**

**Seth Thomas Clocks**  
The finest clock made—handsome  
cases—Anglois Clocks—specially  
designed.  
**50c a Week**

**Pay Only 50c a Week**  
**ILLINOIS  
Master Watch**  
Greatest watch of the age. Most talked  
of timepiece in America.  
**17 JEWEL ADJUSTED**  
Exactly as illustrated—20-  
year—14 Karat—Gold-Filled  
Case. The Illinois Master has  
a 17-Jewel Movement adjusted  
to Mean Time. Incomparable.  
Guaranteed Accurate Time-  
keeper.  
**\$36.75**

**OUR ONLY STORE**  
**M.S. SIMON & CO.**  
LARGEST EXCLUSIVE CREDIT  
JEWELRY HOUSE IN PHILADELPHIA  
15 NORTH 13TH STREET

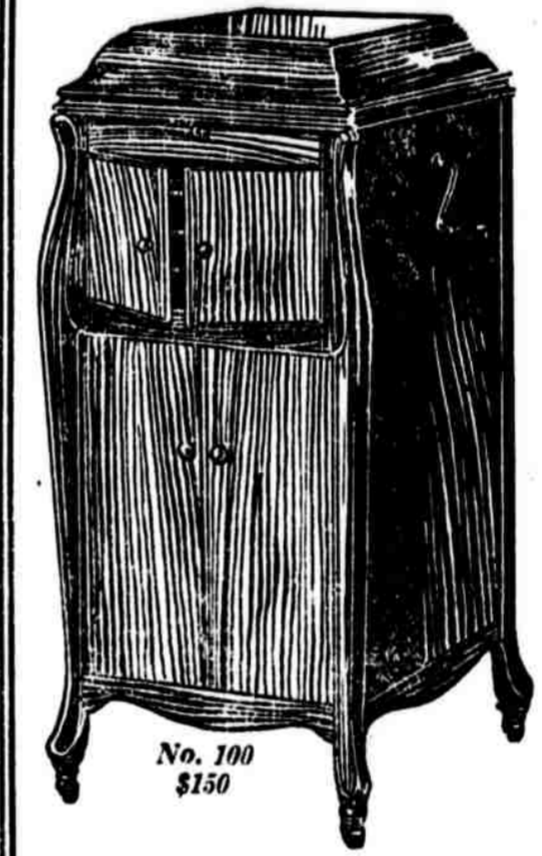
Fifth  
Floor,  
South  
Building

**SNELLENBURG'S**  
FRIDAY, NOVEMBER 24, 1922. Store Opens at 9 A. M. Closes at 9:00 P. M.  
ENTIRE BLOCK - MARKET 11th to 12th STREETS

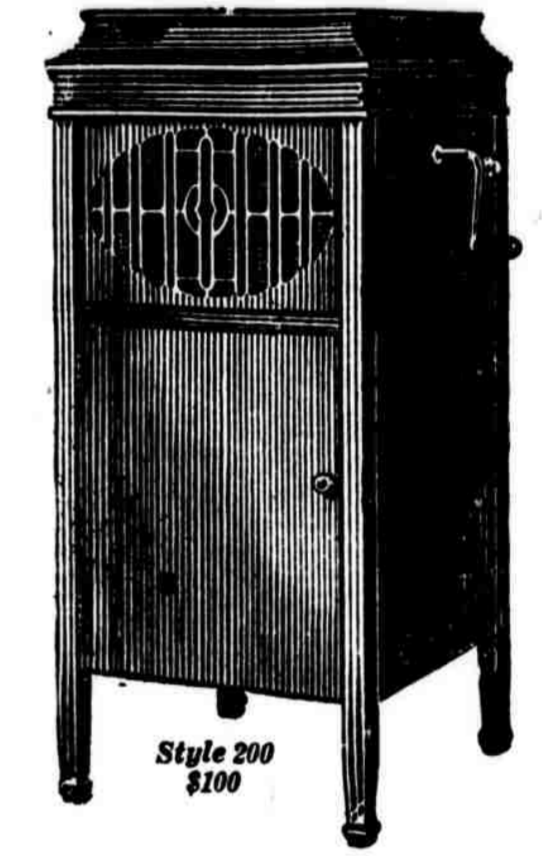
Fifth  
Floor,  
South  
Building

**Snellenburg's—Headquarters for  
High-Grade  
Talking Machines  
OF ALL KINDS**

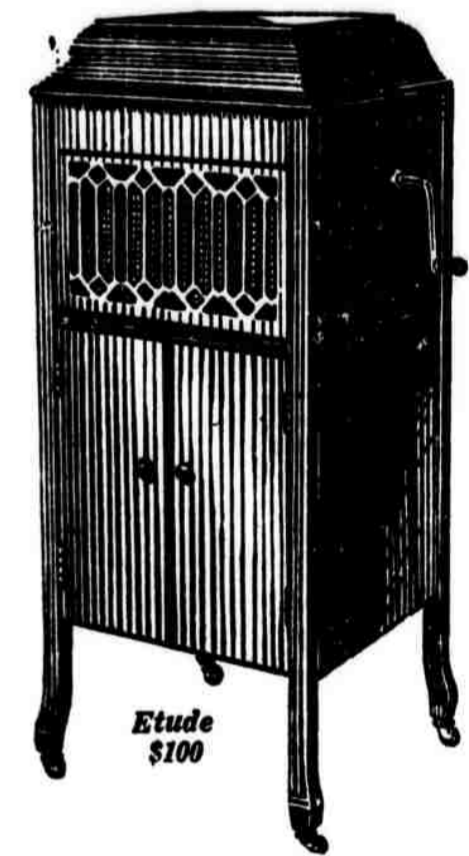
**\$5** Down, Places in Your Home in Time for Thanks-  
giving, Any Machine in the Store—the Balance  
Payable on Our Easy Payment Club Plan.



**No. 100**  
**\$150**

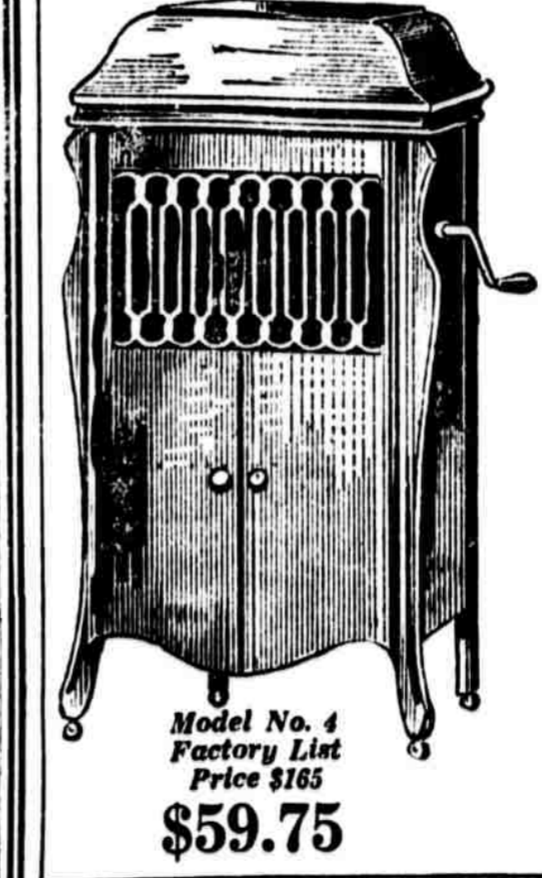


**Style 200**  
**\$100**



**Etude**  
**\$100**

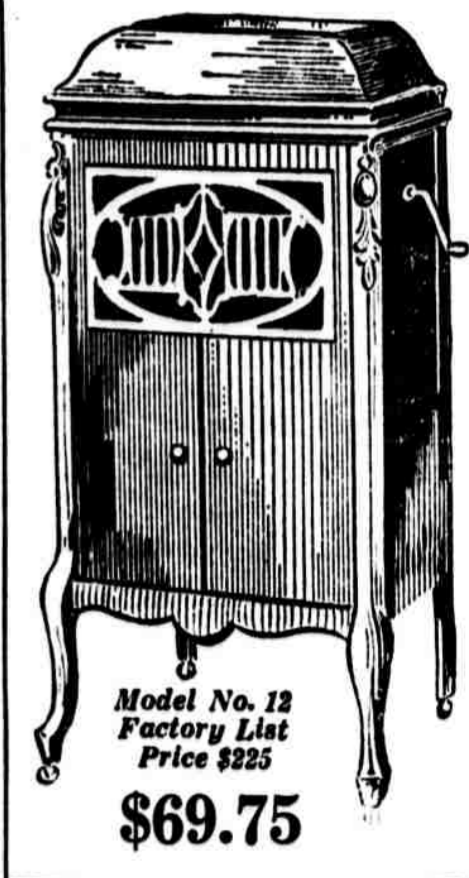
**And We Also Continue Our Phenomenal Sale of  
Other High-Grade  
Phonographs at Less Than  
Cost of Production**



**Model No. 4  
Factory List  
Price \$165  
Our Price \$59.75**



**Model No. 12  
Factory List  
Price \$225  
Our Price \$69.75**



**Model No. 503  
Factory List  
Price \$235  
Our Price \$89.75**

**75c Emerson 10-Inch Double-Faced  
Records on Sale Today at 19c Each**  
Lot comprises modern dance hits, vocal, instrumental, operatic numbers, trios, duets, novelty and foreign  
selections by the famous Emerson artists.

**\$1.00 10-Inch Red, White and  
Blue Columbia Records 23c**  
at, Each

These records are the choice of the cata-  
logue, consisting of operatic, classic, vocal and  
instrumental numbers, many by the exclusive  
Columbia artists.

**\$1.25 to \$2 12-In. Double- and  
Single-Faced Columbia 43c**  
Records at, Each

Consisting of famous Symphony, operatic  
and instrumental numbers. These records are  
the cream of the 12-inch catalogue, and by the  
exclusive artists of the Columbia.

**N. SNELLENBURG & CO.**