

# GIMBEL BROTHERS

MARKET · CHESTNUT · EIGHTH · NINTH

Store Open 9 A. M. to 5:30 P. M.

For Saturday

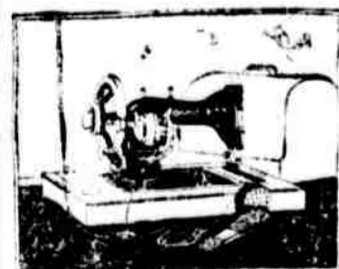
Football at Franklin Field  
Pittsburgh plays Penn, Saturday, at 2  
Reserved seats at Gimbel's—today and Saturday morning, as they hold out, \$1.50 and \$2.

## Special Offer Tomorrow

### Willard Electric Portable Sewing Machines

\$10 allowance for your old sewing machine, regardless of its age, make or condition, toward the purchase of an Electric Portable Machine.

Domestic Make With a Westinghouse Motor



\$59 Machine Special at \$49 Allowance 10

Net Price, Brand-New Machines \$39

### Terms: \$1 Weekly

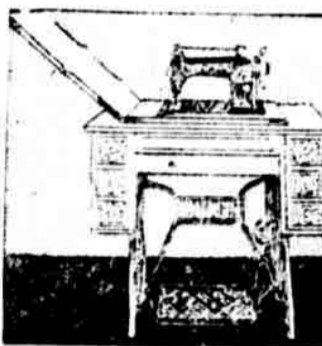
No Extra Charges of Any Kind

Every woman with a shrewd eye to economy, now using an old machine, will welcome this opportunity and will trade her heavy-running machine for the New Willard Electric Portable.

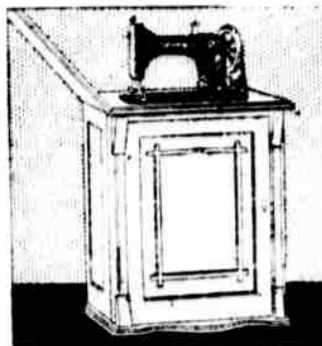
Can be attached anywhere, used on any table, carried in convenient case, and will fit in any small closet.

Another Remarkable Offer in Slightly Used Machines

### Savings from \$10 to \$25



Singers \$29  
"Free" \$29  
New Home \$29  
White \$29  
Lessing \$31



New Willard Parlor Cabinets, \$49

—Gimbel's, Fourth floor and Subway Store.

## Armistice Day True to the 534 Men of the Gimbel Business

who answered the call in the Great War: True to all that the World War meant to civilization, we shall open the Store Saturday morning with

### Commemorative Exercises

HON. J. WILLIS MARTIN  
President Judge of Court of Common Pleas  
Will Speak at 9:30  
EMILY CROSS BARNES, Soprano will sing "In Flanders Field" and Kipling's "Recessional". Gimbel's Sextets will participate.

The Public Is Invited  
The business of the day will commence at the conclusion of the exercises—10 o'clock.



## 1000 Silver-Plated Mesh Bags, \$1.35

But Really \$2 and \$2.50 Bags!



A strap-handle style with enameled engraved frame and pretty "jeweled" clasp.

Another style with gray silver etched frame—just a trifle over four inches deep! —Gimbel's, First floor.

## Plumage Hats at 95c and \$1.95

—Values \$2.50 and \$3  
The crown on the 95c hats is the famous "in a tetchick ends" on the other is all-curved ostrich. Black, brown, navy, beige, Copenhagen blue and gray. —Gimbel's, Third floor.



## Misses' Herringbone Sports Coats



—With Huge Shawl Collars

### Raccoon Fur Special for Saturday at— \$25

And besides—Silk-lined, embroidered bolivia coats. Bolivias with big nutria collars. Tweed sports coats. Velour coats—both practical and dressy. 14- to 20-year sizes.

### And a Wonderful Grouping at— \$59

Embraces every new quirk of fashion. Bolivias, marvellous, mostly. All fur-trimmed—all gloriously fur-trimmed. Wolf, fox, opossum, and beaver. 14- to 20-year sizes. —Gimbel's, Sales of Dress, Third floor.

## Winter Coats, Capes and Wraps for Women

At Special Armistice Day Prices

Sports Coats—new, smart length: silk lined. Tans, browns, oxfords and navy. \$25

Wool-Velour Blouse and Straight-line Coats—silk lined, and with big fur collars. \$25

Dressy Coats of fine soft wool bolivia, silk lined throughout. New! browns, new blues and black. \$39.75

Fur-Collared London-Style Sports Coats—of imported English coatings. The big shawl collars of natural raccoon. \$39.75

Wool-Bolivia Coats and Wraps—distinctly new models. Silk lined. Huge collars—or collars and cuffs—of caracal, wolf, fox and opossum. \$45

Most Wonderful Grouping of the Season—velveteen, Alonzo, Osiris coatings. Fur trimmings of mole, beaver, wolf, fox, squirrel, skunk, caracal, Persian lamb. \$59

—Gimbel's, Sales of Dress, Third floor.

## Women's Watches: Fine, Accurate, and About Half Price

14-K. Solid White Gold

Fine 17-jeweled lever movement, cut balance, broquet hairspring, adjusted, Small 6 1/2 ligne size. \$24.00 instead of \$45.00

Solid 14-K. White Gold

Fine 17-jeweled lever movement, cut balance, broquet hairspring, adjusted, 9 1/2 ligne size. \$18.00 instead of \$35. —Gimbel's, Gold Jewelry, First floor.



## Imported Filled Caramels Assorted Fine Flavors, at 75c lb.

\$1.25 Chocolate-covered Fruits, Nuts and Creams. Pound box, 60c

COMBINATION—Dollar Box "Pirika" Assorted Chocolates; pound of walnut-stuffed Dates, and a pound of assorted hard and filled Gloss Candies: \$1

COMBINATION—One pound of Chocolate-covered Caramels and pound of Assorted Chocolate Straws—the two 59c

—Gimbel's, Chestnut Street Annex, Grand Aisle and Subway Store.

## Society Brand and Kuppenheimer Suits and Overcoats



### Suits and Overcoats

\$35  
\$40  
\$45

The true economy of good dressing—clothes that hold their good looks.

Some overcoats up to \$85.

### 2000 OVERCOATS \$25

Usters, Chesterfields, Box Back, Form-Fitting

### MEN'S SUITS \$25

Some Have Two Extra Pair of Trousers

—Gimbel's, Second floor.

## Men's \$7 to \$8 Velour Hats at \$4.95



Unexpected good fortune to get these \$7 to \$8 velour hats at \$4.95—and in the leading shades.

Best Hats in the city at anywhere near the price—Gimbel Special, soft and stiff, at— \$2.95

Caps at \$1

Up-to-date models, in big assortment. Mallory Hats, soft and stiff, at \$5. Station Hats, soft and stiff, at \$7, \$8 and \$10. —Gimbel's, First floor, Ninth Street.

LITTLE BOYS' HATS, newest and in varied assortment. Third floor.

## Subway Store Dress Sale

Principally a Clearance of Many "Fews" Reduced to

# \$10

—Were \$15 to \$29.75

Women's and misses' broken sizes—but wonderful variety for each size to choose from.

Added to These—

A new special purchase. Fully fifteen styles—poiret twill, tricotine—yes, a wrap-around coat dress. Velveteens, Canton crepes, charneuse, crepe de chine, laces.

New front drape—new side drape—new sleeve drape, waistline trimming. And sleeves—every variety there is!

Black, blues, browns—often color-embroidered or faced with color. Various in—Misses' Sizes: for 16 to 18 years. Women's sizes: 36 to 44.

—Gimbel's, Subway Store.



## SUBWAY STORE SALE

### 250 Pairs Wool-and-Cotton Mixed White BLANKETS \$4.45

Wide mercerized binding. Pink or blue borders. Regularly \$6.50 a Pair

### Famous "Woolnap" (Cotton) Blankets \$3.45 pair

Choice of white, gray or plaids. Double-bed size, at— Regularly \$4.75

### Wool-Filled Comfortables \$5.95

Covered with figured sateen, plain sateen borders. Double-bed size, at— Save a Third

### 500 Beacon-Make (Cotton) Jacquard Crib Blankets 78c

Size 50x40 in., at— Regularly \$1

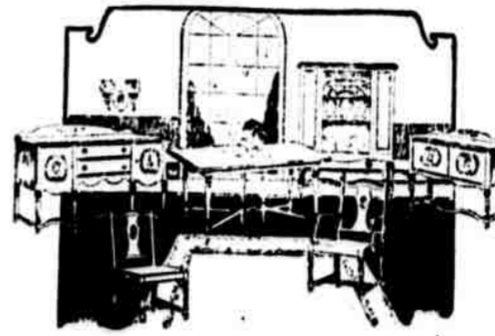
### Cotton-Filled Comfortables \$2.00

Figured silkline covered. Full-bed size, at—

—Gimbel's, Subway Store.

## Dining-Room Suites

4 Pieces, \$150      10 Pieces, \$175



Walnut tops and fronts, beautifully figured.

Four pieces (without chairs) at \$150 the Suite.

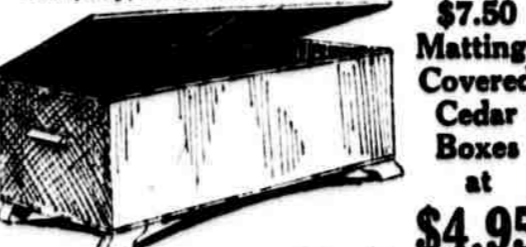
Ten pieces (with six chairs) at \$175 the Suite. —Gimbel's, Sixth floor.

## 75 Great Big Storage Cedar Chests at \$26.75

Value \$35



Good red "Tennessee cedar"—polished until the strong markings show up like a map! 48 inches long, 20 wide, 18 high. Lock, key, hinges and castors.



\$7.50 Matting-Covered Cedar Boxes at \$4.95

—Gimbel's, Upholstery Store, Fifth floor.

## Men's Brushed Wool Mufflers, \$1.10



Brushed wool—fluffy soft and warm—big wide fellows; great for motor-ing, skating and general use. Plain colors. Stripes. All have fringed ends. Great value at \$1.10. —Gimbel's, First floor, Ninth Street and Subway Store.

## Boys' Norfolk Suits

One-Trouser Suits—\$8.50, \$10, \$12.50  
Two-Trouser Suits—\$10.50, \$12.50, \$15  
Single- or double-breasted. Newest pleat models. Ages 8 to 18.  
Boys' Mackinaws \$10  
Boys' Overcoats Ages 8 to 10—\$8.95 to \$25  
Ages 12 to 18 \$15, \$20 and \$25 —Gimbel's, Third floor.



## Tomorrow 3000 Pairs of Women's \$9 Black Satin and Patent Leather Low Shoes, \$5.85

Specials from a regular Gimbel line only certain very fine Philadelphia factories are trusted to "make up" for us.

Cross-Straps: Instep-Straps: One-Straps Baby Louis, Cuban and full Louis heels. Charm! Also Women's Smart Tan Calf Walking and Military Oxfords Specially Priced— \$5.85 —Gimbel's, Shoe Section, Second floor.

## \$78.50 and \$91 Heavy Royal Wilton RUGS, at— \$67.50

Two sizes at same price: 8 ft. 3x10 ft. 6 and 9x10 ft. 6. Many are worsted-face rugs. Rich Persian designs are reproduced in these rugs at \$67.50.

Two Other Important Specials—  
9x12 ft. Seamless Worsted Tapestry Brussels Rugs, Regularly \$32.50, at— \$24.50  
\$91 Seamless Royal Wilton Rugs, 8 ft. 3x10 ft. 6, at— \$81 —Gimbel's, Fifth floor.