

the hermitage
NEW YORK'S CLUB-LIKE HOTEL
Times Square (Southwest)
INDIVIDUALITY
EXCELLENCE OF SERVICE
Rooms Single, Double, \$10 to \$15.00
Samuel Chinsky

SALESMEN
Wanted to sell a high-grade reasonable priced, well-known automobile. Selling experience desirable but not essential. Applications treated in confidence. Write for appointment to C. C. Eib, Room 1488, Bellevue-Stratford.

RELATIVES NAMED IN WILLS
The following wills admitted to probate today name relatives of the testators as beneficiaries: Friedrich Arzheim, 338 East Indiana avenue, \$6100; Peter J. Englehard, 4542 Edgemont street, \$15,500; and Elizabeth Mages, who recently died in the Episcopal Hospital, \$3000.
These inventories of personal estates were filed: Felix Spatola, \$21,741.62; Edward Chambers, \$25,180.50; Richard Thornton, \$12,928.00; and Frank H. Meyer, \$18,861.80.

BEVERIDGE 13,729 BEHIND IN INDIANA
Election of Former Governor Ralston to U. S. Senate Now Assured

G. O. P. STATE TICKET WINS

By Associated Press
Indianapolis, Ind., Nov. 8.—The election of Samuel M. Ralston, Democrat, as United States Senator from Indiana over Albert J. Beveridge, Republican candidate, was assured today when precincts that failed to report last night contributed to the Democratic nominee's total.
Mr. Ralston's lead grew as belated returns were received throughout the day. A compilation of unofficial returns from 1208 of the State's 3305 precincts gave Ralston 348,303; Bev-

eridge, 254,474, this being a lead of 13,729 for Mr. Ralston. William Henry, Socialist candidate, received 411 votes from the same precincts.
The re-election of two Republican Congressmen, Merrill Moore from the Seventh District and Will R. Wood from the Tenth, was made certain by returns last night, but in the remaining districts the contests were so close today that it seemed as if the official count might be necessary to determine some of the successful candidates.
The race between Andrew J. Hisey, Republican incumbent in the Thirtieth District, and Miss Esther Kathleen O'Keefe, Democratic nominee, and first Indiana woman to try for a congressional seat, took a turn in favor of Mr. Hisey this morning, a tabulation of 186 of the 238 precincts giving him 20,464 and 26,802 for Miss O'Keefe.

BLAST OF STILL KILLS MAN

Schenectady, N. Y., Nov. 8.—John Minardo, 45, died in a hospital here last night of burns and shock following the explosion of a still in his home. Minardo, who lived alone, apparently had the still in operation in the morning.

KLAN'S CANDIDATE LEADING IN TEXAS
Mayfield Has Majority Over Paddy for Senate of 175,000

NAMES OFF MANY BALLOTS

Dallas, Tex., Nov. 8.—Backed by the Ku Klux Klan, Earl B. Mayfield, Railroad Commissioner, probably has carried Texas for United States Senator by a majority of 175,000 over George Paddy, of Houston.
The Texas Klan, which has developed into one of the smoothest working and most powerful political machines in the history of Texas, was enabled to win this victory after a campaign remarkable in many respects.
Mayfield's name was on the ballot in about twenty-five counties and it was off the ballot in the remaining 228 counties of the State. Paddy's name was not on the ballot in any county. It was, therefore, a proposition to write the name of one of the candidates on the ballot in all, or nearly all, of the counties. This was done and the returns at this time are about two and one-half to one in favor of Mayfield.
Mayfield's majority now is approximately that received in Texas by Governor Cox, of Ohio, in the presidential election of 1920. Both Mayfield and Paddy are Prohibitionists, but Paddy had the support of former Governor James E. Ferguson, a beer and light wine advocate. For the last ten years Mayfield has been a member of the State Railroad Commission and has four years more to serve in that office. H. D. Linsley, former Mayor of Dallas, first commander of the American Legion, head of the War Risk Bureau under President Wilson and well known in Eastern financial circles, was Paddy's campaign manager. Thomas B. Love, Texas member of the Democratic National Committee and former Assistant Secretary of the Treasury, was active in defending Mayfield's candidacy, although he is an anti-Klanman.

LODGE RE-ELECTED BY 1945 PLURALITY
Massachusetts Senator Barely Pulls Through—Rival to Ask Recount

GOVERNOR COX ALSO WINS

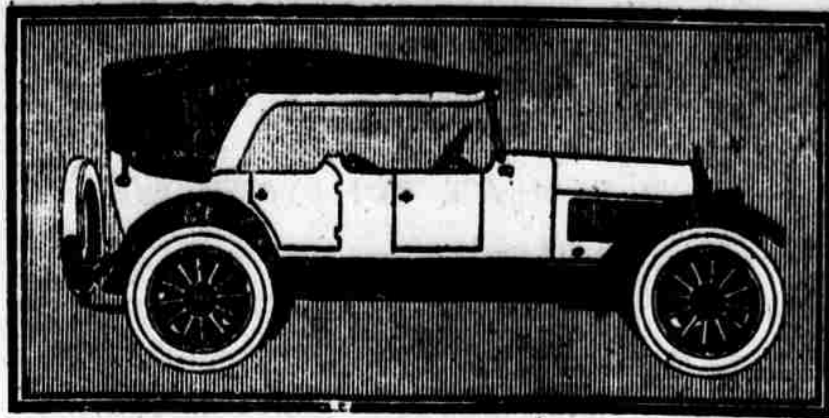
By Associated Press
Boston, Nov. 8.—Senator Lodge was re-elected over William A. Gaston, Democrat, yesterday by a plurality of 1945. The vote of the State complete was: Gaston, 414,730; Lodge, 616,978. A recount of the vote for Senator undoubtedly will be asked by Colonel Gaston, his associate said.
Governor Cox, Republican, was re-elected by a margin of more than 85,000 votes over John F. Fitzgerald, Democrat.
The Democrats gained one congressional seat through the victory of William P. Connery, Jr., in the seventh district. This gives them three of the sixteen Congressmen from this State. Gains also were made by the Democrats in the Legislature, where they will have two additional Senators and thirty-seven more seats in the House. For the first time women were elected to the House, the winners being Miss M. Sylvia Donaldson, of Brockton, Republican, and Mrs. Susan V. Fitzgerald, Democrat.
Joseph C. Pelletier, Democrat, was defeated for the office of District Attorney of Suffolk County, including Boston, from which he was removed by the supreme court for malfeasance. His successful opponent, Thomas C. O'Brien, is a Democrat who was a candidate on both tickets in the primaries and won the Republican nomination.
Speaker Gillet, of the National House of Representatives, was re-elected in the Second District.
New York, Nov. 8.—One of the interesting questions decided in Massachusetts yesterday was that having to do with the censorship of motion pictures.
At the office of Will H. Hays here, late last night, where a direct wire had been installed from the Boston anti-censorship headquarters, it was said the Censorship Bill had been beaten at least 4 to 1. This is the first time in the history of the film that a State has voted on the matter of censorship.

Why Corns?
Just say **Blue-jay** to your druggist
The simplest way to end a corn is Blue-jay. A touch stops the pain instantly. Then the corn loosens and comes out. Made in a colorless clear liquid (one drop does it!) and in thin plasters. The action is the same.

Pain Stops Instantly

I CAN OFFER
Executive ability gained through 10 years' experience with one of the largest corporations in Philadelphia can handle an office here, bookkeeping, correspondence, etc., and can purchase electrical supplies; an \$8.00 month, American by birth and origin; the best of references, of course. Can YOU use me?
BOX 22 628, LEDGER OFFICE

STEPHENS SALIENT SIX



The Sale of 15 Demonstrators

1922 Models at reductions of from 25% to 40%

It is our custom during the months of November and December of each year to dispose of all our demonstrators in the five branches as well as in Philadelphia.

These demonstrators are not new cars or second-hand cars, but automobiles that have been scientifically handled by expert drivers, and are naturally kept in the pink of condition. In appearance and performance are equal to any new car, mechanically perfect, and carry the same factory guarantee as new ones.

Very convenient terms. It will pay you to look over these very unusual values.

TRAYLOR MOTOR CO.

"Noted for its good service and fair treatment"
Exclusive Distributors of the Famous Stephens Salient Six
252 North Broad Street
BRANCHES—ALLEN TOWN, READING, EASTON, LANCASTER
OPEN EVENINGS



If it's a Jim Hill apple it's bound to be sprightly flavored.

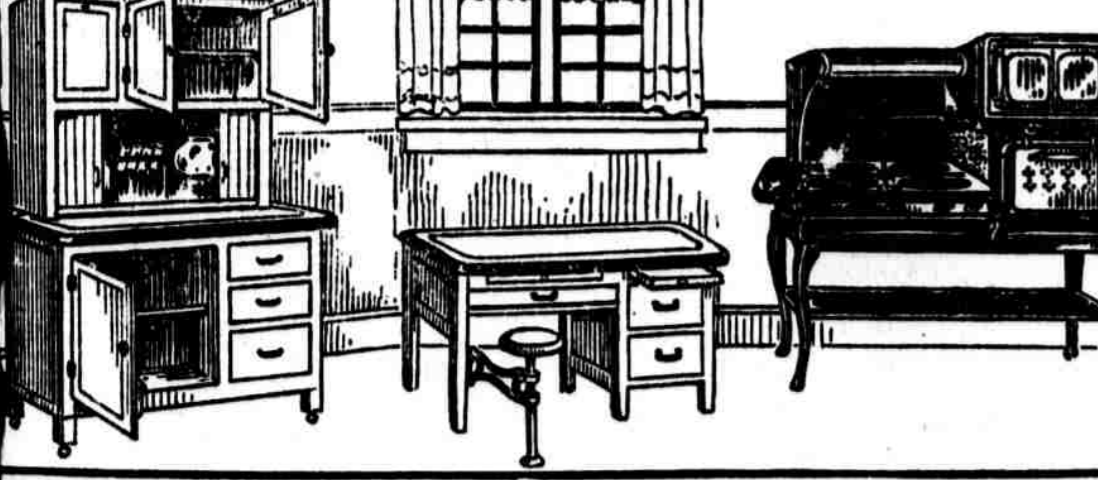
Your first taste will give you an appetite thrill. The crisp, snowy texture of a Jim Hill apple is laden with juice that is really exhilarating. You'll eat to the core—skin and all—with relish.

Jim Hill apples cannot help but be sprightly flavored. They come from Wenschke District, Washington, the finest single apple district in the world. They are picked, packed and shipped so as to reach you with all their appetizing harvest-time qualities.
Grocers and fruitmen sell Jim Hill apples. Your guide is the Jim Hill label on the box.

Jim Hill Winery
—the apple of my eye
Pure and since the Jim Hill Winery, America's largest apple wine plant, has 14 vineyards with 1,000 acres of apple trees and 1,000,000 bushels of apples a year. Our apples are picked at the peak of ripeness and are packed in specially designed boxes to keep them fresh and crisp.

Jim Hill Apples
"From Nature's chosen Apple-land"

GILLIES
Broad St. at Susquehanna Ave. Established 1889 Broad St. at Susquehanna Ave.



\$20.00 Will Deliver This Kitchen Outfit, Consisting of Cabinet, Table With Stool, Range, Chair, Linoleum and Refrigerator.

We specialize in kitchen outfits of the better kind. Where utility plays such a large part in the selection of suitable pieces, it is necessary that they be stanchly constructed.
The all-white kitchen cabinet only \$49. Note the large spaces for dishes, metal bread and cake box, porcelain top with extension feature, and complete set of glass jars for spices, teas, coffee, etc.
A low cabinet table has been found to be very useful and is necessary even though you have a kitchen cabinet. It is finished in white enamel throughout and has a large porcelain top. The stool attached is also white enamel. All parts are heavily nicked. The price is \$45.
Convenient terms of payment can be made on all stoves and ranges. The gas range illustrated has large white enamel door plate, four large burners and one small one, large oven with broiler, and is well made throughout. The price is \$69.50.
On these, as well as other articles illustrated above, special low down payments can be arranged for if purchased individually and the balance can be paid at \$2.00 weekly.
Open Monday, Friday and Saturday Evenings



High-Back, Well Finished Kitchen Chair \$3.75



Porcelain-Top White Enamel Kitchen Table \$12.50

Not One Penny Down



and sent to you on 10 days Free Trial the world famous Simplex Ironer

Yes, Madam, that is exactly what we mean! We will send you this splendid, brand new, smooth running family size **SIMPLEX IRONER** on 10 full days' free trial. Remember, this means absolutely no cost and no obligation to you. We even pay the delivery charges.
See for yourself how easy it is to operate! Try it on your sheets, pillow cases, table cloths; on dresses, shirts, underwear, embroidery, etc. Subject it to every ironing test that you can think of! And then if for any reason whatsoever you do not want to keep it, we will send our driver out to get it, and it won't cost you one penny. But if you decide that you cannot get along without it

Then all you need to pay is **Just \$7.50 Down**

It's a fact! Only \$7.50 as first payment, and then you can pay the balance in the easiest of easy monthly payments—30 days between each small payment; and furthermore, you need not make another payment of any kind until January of next year.
Telephone: Walnut 4700 or Main 2501
If you telephone us, merely ask for the **SIMPLEX DEPARTMENT**, and we will give you the full information. Telephone us right away or call personally just as soon as possible.

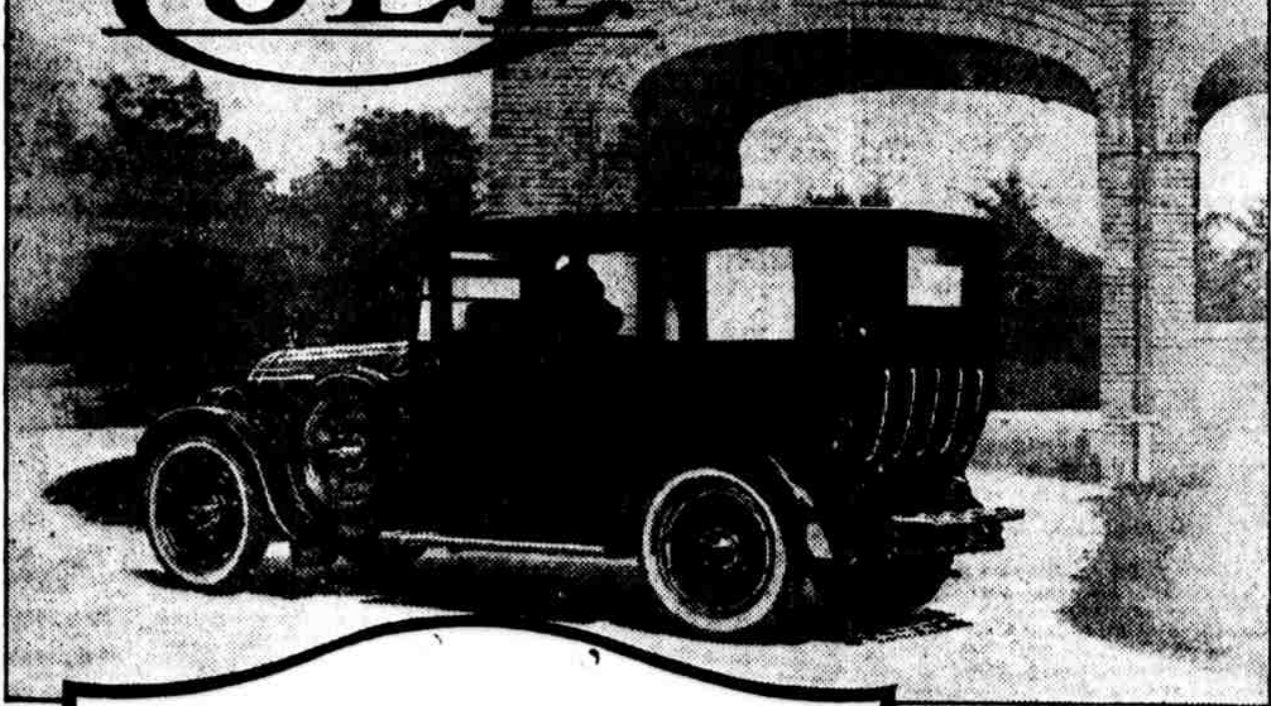
The PHILADELPHIA ELECTRIC COMPANY
TENTH and CHESTNUT STREET
9 S. 9th St. 8th and Diamond Sts. Frankford Ave. and Orchard St.
Kensington Ave. and Clearfield St. 18th St. and Columbia Ave.
Broad and Ruxcomb Sts. (Logan) 7 and 9 W. Chelton. Broad and Wharton St.
DELAWARE COUNTY ELECTRIC COMPANY
Chester Media Lansdowne

REFUSES TO NOLLE PROS CHANDLER CASE
Judge Stern today refused to nolle prosequi the case against Earl Mendenhall and Fred T. Chandler, Jr., members of the firm of Chandler Bros. & Co., who are being tried for embezzlement by broker and fraudulent conversion.

HOME BLOWN TO PIECES BY GAS EXPLOSION
The unoccupied home of J. L. Wagner, at Blake avenue above Huntingdon pike, was blown to bits by a gas explosion at 10 o'clock this morning. The residence of J. C. Thompson, next door, was also damaged. Albert Wagner was cut by flying glass. Fire followed the explosion and firemen managed to save half of the double house.

DEMOCRATS ELECT SENATOR IN WEST VIRGINIA
CHARLESTON, W. VA., Nov. 8.—Returns from 1522 of 2095 State precincts for Senator give Neely, Democrat, 151,818; Sutherland, Republican, 139,543.

SOCCER SCORES
Northeast H. Fresh... 1 0—1 W. F. H. Fresh... 0 0—0



The New Ultra-Equipped **Sedan**
(Actual Photograph)
This beautiful, roomy enclosed vehicle, the last word in style, refinement and structural superiority, is available at little more than the cost of many open cars. Added to its classic lines and striking beauty, are unequalled riding comfort, economy and endurance.

Seven Superb Body Types	
CLOSED	
Sedan	7 passengers
Suburban	4-5 passengers
Coupe	4 passengers
Berline	7 passengers
OPEN	
Tourster	7 passengers
Roadster	8 passengers
Spottier	4 passengers
Immediate Deliveries All Models	
The World's Safest Motor Car Holds Braking Test Record	
There's a Touch of Tomorrow in all Cole does Today	

Manufacturers: Cole Motor Car Co., Indianapolis, Indiana
Distributors: L. S. Bowers Co., 845 North Broad St., Philadelphia