

**NOTABLE SPEAKERS FOR SHORE MEETING**

Prominent Men to Address New Jersey Conference for Social Welfare Next Week

**MASONS PLAN FOR TEMPLE**

Atlantic City, Nov. 1.—A notable list of speakers will address the annual New Jersey Conference for Social Welfare here on November 9 and 10 at the Chalfonte Hotel. Included will be Senator Edge, former Governor Max Baughman, of Pennsylvania; John G. Brumbaugh, president of the State Chamber of Commerce; John Gascayne, chief probation officer of Essex County; Arthur A. Quinn, president of the State Federation of Labor; Judge Fred J. Stichel, Jr., Newark; Mrs. A. B. Proal, president of the State Federation of Women's Clubs, and Shelby H. Harrison, director of the Department of Surveys and Exhibits, Russell Sage Foundation.

Mrs. Warren Somers yesterday was awarded \$1218 against Thomas Battle, of Philadelphia, for damages she charged were inflicted on her automobile by a truck belonging to Battle. Mrs. Somers is the wife of a shore banker. She alleged repairs necessary to her machine after a collision she blamed on the Battle driver cost her the amount awarded by the jury sitting in the Circuit Court.

Tentative plans have been accepted by the shore Masons for erection of a \$350,000 temple on property recently purchased along Chelsea Parkway. The structure will have a capacity of 1000 persons. A jury composed of University of Pennsylvania instructors selected the plans from three sets submitted.

Educational topics and plans for a Mill on juvenile workers in industry, will be discussed by the annual conference of the New Jersey Congress of Mothers and Parent-Teachers' Association here on Thursday and Friday. There will be a board meeting today. More than 500 delegates representing a total membership of 25,000 in all parts of the State, are expected at the sessions. Dr. Lambert Jackson, of the State Department of Education, will speak on "The Value of the Junior High School." Dr. Henry Gates Hawn, New York, on "The Soul of Things." Miss Louise Connelly, Newark, on "Better Motion Pictures for America," while the Consumers League of New Jersey will present the subject of "Child Labor" and "Street Trades."

Success of the campaign waged for the past ten days by teams of prominent citizens to raise \$350,000 for necessary additions to the City Hospital was assured last night by returns that showed the total subscriptions within \$25,000 of the goal. The drive will end tonight. Over 2000 individuals have made subscriptions toward the fund from all parts of the county.

**ON THE FAIRWAY**  
The beautiful fall days have been utilized to the fullest advantage by local golf enthusiasts. Their activities are followed by a luncheon described by an authority, Frank McCracken, in the Sports Column of the Public Ledger. "Make it a Habit."

**CENTRAL TRUST and SAVINGS CO.**

**A Man and His Bank**

AN ENDURING connection with a strong, conservative bank is as fine a business reference as a man can have.

Make This Bank Your Reference

**CAPITAL & SURPLUS \$1,600,000.00**

**High in quality right in price**

**DANISH BOND**  
ONE OF THE LINE OF PAPERS WATER-MARKED DANISH

SNAP a sheet of Danish Bond between your fingers. It has the crackle of true quality. Note its strength, its texture—that parchment-like "feel" found only in high-grade writing paper.

Danish Bond is as good as clean rags, pure artesian water, modern methods and skilled workmanship can make it.

Ask your printer to estimate on Danish Bond for your next letter-heads. The price—for such distinctiveness and character—will surprise you pleasantly.

**DANISH LEDGER DANISH KASHIMIR COVER DANISH LINEN DANISH INDEX BRISTOL.**

Made in the Hills of Berkshire County by the **B. D. RISING PAPER COMPANY** Housatonic, Massachusetts

Sold by **GARRETT-BUCHANAN COMPANY** 19 S. 6th St., Philadelphia

**A Word to the Wives**

Are you helping your husband's future by thrift and economy? Our Savings Department will co-operate with you for putting by a nest egg for later years—and pay you 4% interest.

**4% Interest Allowed on Savings Deposits**

Open an account and watch it grow. Every consideration is given to women depositors to make them feel "at home."

*A National Bank with a Savings Department*

**National Bank of Commerce**  
73 Chestnut St.  
Nathan T. Folwell, President

**Saving \$200 to \$800 on Better Trucks**

"In our national fleet of 50 trucks, we use 20 Stewarts. Our maintenance cost on Stewarts is lower than any other we operate." E. H. CULP, Supt. Auto Dept. The O. J. Gode Co., N. Y.

Chassis Prices  
1 1/4 to 1 1/2 ton \$1445  
1 1/2 to 2 " 1790  
2 1/4 to 3 " 2390  
3 1/4 to 4 " 3190  
"Utility Wagon" 2500 lb. cap. 1245  
I. O. B. Buffalo

Stewart trucks cost \$200 to \$800 less than average. And they consistently prove their superiority, working side by side in the same fleets with costlier trucks. Last longer, cost less to run and maintain, and render steadier, more reliable service.

That is why truck users add Stewart after Stewart as their needs increase. In all sizes for all uses.

**Gomery Schwartz Motor Car Co.**  
Sales Room, 128-140 North Broad  
Service Station, 2400-14 Market St.

**Stewart MOTOR TRUCKS**

**Another Big Auction of Horses, Wagons and Harness—FURNITURE and MERCHANDISE Today, Nov. 1 and Every Wednesday & Saturday at 10 o'Clock Sharp Auctions Conducted Anywhere**

If you have anything you wish to sell quickly bring it in and we will sell it for you and give you the cash.

**Kaighn's Avenue Auction Co.**  
1210-12-14-16-18-20 S. 2d St. Camden, N. J.

**One Day Outings**  
Interesting Trips from Philadelphia via "The Reading"

**New York**  
"The City of Wonders"  
SUNDAY November 12  
**\$3.00** ROUND TRIP  
SEE!  
Largest city in the world; Statue of Liberty; Grand Central Station; Times Square; Broadway; Empire State Building; Radio City; and many other sights and interesting friends.

**SEASHORE ATLANTIC CITY**  
Ocean City Stone Harbor Wildwood Cape May EVERY SUNDAY  
**\$1.50** ROUND TRIP  
Leave Chestnut and South St. 7:30 A. M. for ATLANTIC CITY 7:30 A. M. for SEASHORE RESORTS. Leave Chestnut St. 7:30 A. M. for South St. Ferry 7:10 A. M. RETURNING Leave ATLANTIC CITY 4:15 P. M. for SEASHORE RESORTS. Leave SEASHORE RESORTS 4:30 P. M. for Philadelphia. Leave SEASHORE RESORTS 4:30 P. M. for SEASHORE RESORTS. Leave SEASHORE RESORTS 4:30 P. M. for SEASHORE RESORTS.

For detailed information regarding above Excursions consult Agents—see Flyers. Tickets may be purchased prior to date of Excursions.

**Philadelphia & Reading Railway** Travel on "The Reading"



The De Luxe Car of the Year

**HUDSON**  
The Sedan \$2295

Hudson has long held foremost place as creator of body styles. Its models have set the mode for the industry. Some have sold upwards of \$4000.

But no previous Hudson expresses the consummate art of body building as does the new Sedan. It is the most beautiful Hudson of all time. And the price is an achievement that has astounded all motordom.

In addition to its beauty the Sedan gives still another advantage, the smooth, quiet efficiency of the new improved Super-Six motor. Its performance is a delightful revelation even to old Hudson owners. All Hudsons possess many attractions in quality and price. The Sedan will appeal to those who want the finest.

**HUDSON PRICES**

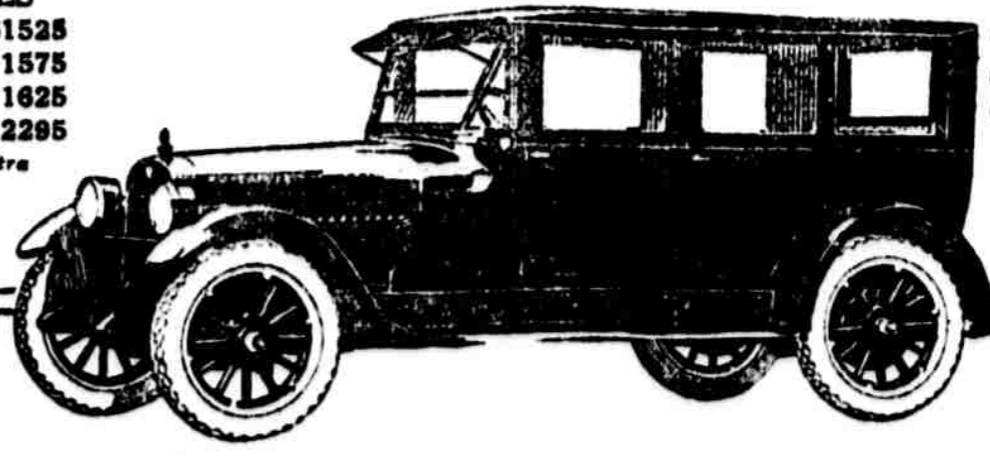
Speedster	\$1525
7-Pass. Phaeton	1575
Coach	1625
Sedan	2295

Freight and Tax Extra

**ESSEX PRICES**

Touring Car	\$1045
Cabriolet	1145
Coach	1245

Freight and Tax Extra



**GOMERY SCHWARTZ MOTOR CAR CO.**  
Sales Room, 128-140 North Broad—Service Station  
2400-14 Market St.

**KISSEL**

The Custom Built Car

**WE** have secured the Kissel franchise for the Philadelphia Territory and are now displaying the latest custom coach creations by Kissel in our new quarters at two fifty Broad Street.

**Columbia Kissel Motor Company**  
250 North Broad Street  
Phone Spruce 8576



Read the Want Advers in the Classified Section