

ON THE CONCERT STAGE—NOTES OF THEATRICAL EVENTS

The Daily Movie Magazine

The Critic Talks to Music Lovers

By SAMUEL L. LACIAR
WHAT promises to be the biggest musical season in point of general interest and the highest point of artistic attainment that Philadelphia has ever seen was officially opened by the concert of the Philadelphia Orchestra at the Academy of Music yesterday afternoon.

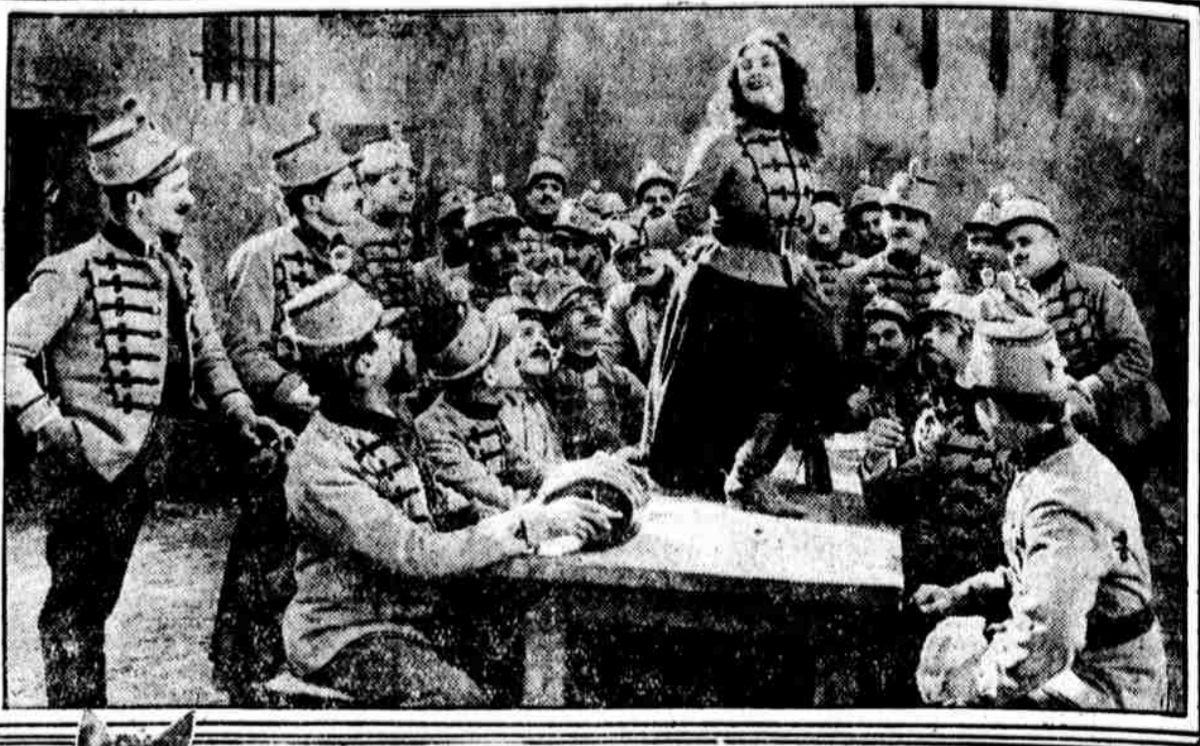
STARS APPEARING ON LOCAL SCREENS NEXT WEEK

Grid of actor portraits with names: BETTY BLITHE, RICHARD BARTHELMISS, MILTON SILLS, BARBARA CASTLETON, etc.

THE ORCHESTRA OPENS ITS SEASON BRILLIANTLY

Two Novelties Presented by Mr. Stokowsky at First Concert
THE PROGRAM
Overture: Meistersinger... Wagner
Symphony No. 4... Beethoven
LA VALLE... Debussy

QUIDA'S OLD THRILLER AGAIN ON SCREEN



Under Two Flags has again been filmed, this time with Priscilla Dean as Clarette, the heroine. Above is a scene showing Clarette alone after the wedding is absolutely inconceivable to me.

With the management of the Philadelphia Academy of Music, William and Arthur Johnson became the managing director of the Philadelphia Orchestra. It was believed by many persons that the Philadelphia orchestra was a Philadelphia song and dance organization.

Ukrainian Chorus Gives A Remarkable Concert
Unique Organization Appears at Academy—Mme. Kosnetz Soloist
Participate in native costume, the Ukrainian National Chorus last evening gave one of the most remarkable exhibitions of choral work that has been heard in Philadelphia for a long time.

Concerning Doris Keane
Doris Keane, star in "The Czarina," appearing at the Broad, Monday, became an actress because nothing else really interested her.



"Under Two Flags" has again been filmed, this time with Priscilla Dean as Clarette, the heroine. Above is a scene showing Clarette alone after the wedding is absolutely inconceivable to me.

Music Notes

The Philadelphia Orchestra... The Chamber Music Society... The Philadelphia Chorus...

STARS IN BURLESQUE AND VAUDEVILLE HOUSES

Grid of actor portraits with names: LIDA FAY-ELDRIDGE, MILDRED BROWN, DOTTY BATES, HOPE LYNN, etc.

FROM NEAR AND FAR

Photographs of extra-ordinary localities, from every quarter of the globe, are printed every week in the "Daily Movie Magazine" section of the Evening Public Ledger.

THE MOVIE FAN'S LETTERBOX

By HENRY M. NEELY
"Holstern" writes: "I saw 'What's Wrong With the Women' and am still in doubt as to whether it is worth the price for her, but the untimely death of Fitch put an end to the plan."
"Miss Eagels Began at Seven"
"Born in Boston, of Spanish and Irish-American parentage, Miss Eagels moved to Kansas City, Mo., in 1912."