

The Daily Movie Magazine

FOR THE FILM FAN'S SCRAPBOOK



IRISCHILLA DEAN

We will be glad to publish the pictures of such screen players as are suggested by the fans.

THE MOVIE FAN'S LETTERBOX

By HENRY M. NEELY

Witness writes: "Though dated the 15th, I am hoping it will bring me the good fortune to be recognized by you. I realize I am only one of the many, but I hate to be overlooked just because I am a little, for I, too, want to have my say. My last letter was in response to 'Shirley M.' Her ideas were so typically mine I became enthusiastic enough to say a word in her praise. This unkind criticism from some ignorant people just ruffles my feathers the wrong way. Beware! for I am the female of the species, and more deadly. I challenge these principles (2) critics to come forth and take a part; then let's all go to see them."

"I have no doubt they would know the stars in the shade. Your column is for criticism of movietland, it is true, but in all sincerity, Mr. Neely, it is most unkind to criticize the personal players as you permit your fans to do. There's no harm in mentioning an actor one doesn't just care for or giving names of pictures that were splendid; but I think it would be more pleasant to read the column, which your answers make interesting, if this personal stuff would be eliminated. God made us what we are. Gloria can no more help her almond eyes than you your curly hair, and it's Valentino's hair, and he can do with it what he likes. And this constant demand for pictures more true to life? Why, we have plain life every day. Give us some of the impossible to keep us guessing, to hold our interest—something to investigate. As Betty Compson in 'The Law and the Woman,' she could guess ahead what would happen. Tell me where I could address Nease Hayskawa. Wish he'd give us some more of 'The Cheat.' Saw him in 'Five Days to Live.' What a fascinating story—one never to be forgotten had he only played opposite an American girl."

"In the meantime, I hope the funny faces who criticize others' physiques would wise up and take a look in the mirror first, and tell Gloria I'll be grateful for her old rags. Don't ride me over the coal, Mr. Neely. I am easily hurt."

"I don't know whether your signature is 'Witness' or 'Mittens,' but I'm taking a chance on the former. It's all very well for you to object to criticisms by the fans and by me, but did you ever think what the letter box would amount to without them? Hayskawa has been around, but is soon to go on the stage. He was formerly with Robertson Cole, and is to be starred on the stage soon by the Shuberts. You might write their New York offices to get his present address. You're certainly smart about 'The Cheat.' Wish they'd revive it."

Paul McHugh—That was Mary Hay, Richard Barthelmess' wife, who played the role of Kate in 'Way Down East.' Tessie Mallet writes: "I've been getting so much from pictures lately; now in 'Warmed-Over Romances,' I never knew before how royalty retired, or that George Cohan's patent had expired on the business of dragging in the poor overworked flag for a cheer when the story couldn't. Understand Anita Loos has come abroad for some more typically American stories. And just to see Gloria Goss in 'Her Golden Chicken Yard' was an encouragement to any ambitious girl of no talents, but an expensive press agent. About the best role Gloria's dresser ever had. Now, Aggie Ains, the little corn-fed maiden, as a chaffin ghost in 'Borderland,' gave me an idea for a swell breakfast cup. Did they mean the borderland of sanity, or otherwise? I wasn't quite sure. Understand the studio carpenter helped construct it. Could you please send out for me how Betty Compson stayed so perfectly curled and pleated in the 'Blonded Woman,' when she was virtuously alone on the island with her man? I want to wreck Amos and the author on Betty's island with a case of scenario textbooks. Let everybody liked 'Blood and Sand,' though it's kinda tragic. Gee, it takes an awful noble dancer to be a matador. Amos says Valentino is a good pantomime. I thought myself those bull-fighter clothes were very becoming to his well-formed calves. But don't you just thrill to Walter Long like that wonderful though cold Naldi did? Amos says the best actors on the screen are the worst villains on the screen. But just as they get going good they are often starred as attractive personalities and utterly ruined. Most of the girls adore the villains, but they are afraid to admit it."

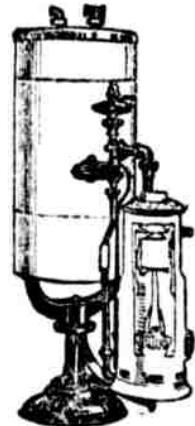
"I was waiting for you to add your word on the subject of both 'Borderland' and 'Blood and Sand.' You've got the knack of never getting stale or second hand in your epistolary comments. Too bad Amos didn't take you to see 'The Three-Must-Get-There'."

Anthony and Cleopatra write: "It is a long time since we have been here, but remembering your kind invitation to come back—here we are. We want to know what you think of Anna Q. Nilsson as she appears in 'The Fast Mail'."

Standard Gas Ranges and Gas Water Heaters



Gas Savers
Labor Savers
Time Savers



At U. G. I. Stores
From Representatives

THE UNITED GAS IMPROVEMENT CO.

The following theatres obtain their pictures through the STANLEY Company of America, which is a guarantee of early showing of the finest productions. Ask for the theatre in your locality obtaining pictures through the Stanley Company of America.

APOLLO 522 AND THOMPSON STS.
RICHARD BARTHELMESS
in "THE FAST MAIL"

ARDMORE LANCASTER PIKE
ARDMORE, PA.
CHARLES HUCKLE JONES in
"THE FAST MAIL"

ASTOR 1800 1/2 & GIRARD AVE.
MATINEE DAILY
PAULINE STARKE in
"THE POWER WITHIN"

BALTIMORE 51ST & BALTIMORE
CONSTANCE TALMADGE
in "THE PRIMITIVE LOVE"

BLUEBIRD 1201 & SUSSEHART
JAMES KIRKWOOD in
"THE MAN FROM HOME"

COLONIAL 411 & MARKET AVE.
WESLEY HARRY in
"PENROD"

FAIRMOUNT 29th & Girard Ave.
WILLIAM RUSSELL
in "MONEY & HONOR"

56TH ST. THEATRE—Show Spruce
DOROTHY DALTON
in "THE WOMAN WHO WALKED ALONE"

GREAT NORTHERN 1300 & 13th St.
CHARLES RAY
in "A TAILOR AND HIS MAN"

IMPERIAL 10th & WALNUT STS.
CHARLES HUCKLE JONES in
"THE FAST MAIL"

LIBERTY BROAD & COLUMBIA AVE.
ALL-STAR CAST in
"THE DEVIL'S CONFESSION"

ORIENT Woodland Ave. at 52d St.
ETHEL CLAYTON
in "FOR THE DEFENSE"

OVERBROOK 631 & HANOVER
PAULINE STARKE
in "SALVATION ARMY"

PALM FRANKFORD AVE. & "REIT"
THOMAS MEIGHAN
in "OUR LEADING CITIZEN"

REGENT MARKET ST. Bldg. 17th
NORMA TALMADGE
in "THE FORTY-NINTH CITY"

RIALTO GERMANTOWN AVENUE
SHIRLEY MASON
in "THE THREE-MUST-GET-THERE"

Opposite Independence Hall

Ivanhoe Ace

Will Cut Your

Electric Light

Bills

For Store, Office,

Factory

Latest in

Lighting

100% Efficiency Dust Proof

No Glare Let Us Show You

Walker & Kepler

531 Chestnut St.

1857 1922

"Did you like Fritz Brunette in 'While Satan Sleeps'? Why don't you see more of her? Also didn't she play a part in 'The Woman Thou Gavest Me' with Jack Holt and Katherine MacDonald? What are some of her other pictures since then?"

"In our opinion Wallace Reid is very silly in some things, while in others enjoyable."

"Who was the child that played the part of Sheba's son in the 'Queen of Sheba'? What a splendid little actor! We thought his acting remarkable; almost as good as Jackie Coogan. Do you agree with us? Don't hesitate to be frank. What was his name, and has he played in other parts—if so, what?"

"Did you like Fritz Lieber as Solomon? We think he has a poetic touch and something quite different from the average run of screen-actors."

"Can you tell us what Robert Gordon's next picture is to be?"

"Our favorites are Norma Talmadge, Elsie Ferguson, Anna Q. Nilsson, Harrison Ford, Robert Gordon, Nita Naldi, Richard Barthelmess, Fritz Brunette, Jane Novak and Leatrice Joy."

"I'm beginning to like Miss Nilsson, though I never used to fancy her. I echo your sentiment on Ford. You must have been away when we said our say on Norma in 'Smilin' Through.' We thought it a great picture. Robert Gordon has always been a favorite of ours (say, you're getting me into the plural habit), but the Novak sisters are not on my calling list. Anita used to be a fine actress; her recent work is in the nature of a real tragedy. Yes, Miss Brunette was excellent in that coking Holt feature; she was in 'The Woman Thou Gavest Me.' That was Pat Moore in 'The Queen of Sheba.' He was a high point of that picture. Lieber was fine. Gordon is not acting at present. Your lists appeal strongly except for one or two."

Special! Pay \$2.00

New CORONA TYPEWRITER

Standard TYPEWRITERS from \$15.00 up

Guaranteed one year

LIBERTY TYPEWRITER CO.

A. G. McLaughlin, W. L. Brickett

1009 Chestnut St., Phila.

Phone Filbert 8254

CORONA

The Personal Writing Machine

Why do so many have their developing and finishing done at

HAWORTH'S

Eastman Kodak Co.

1020 Chestnut St.

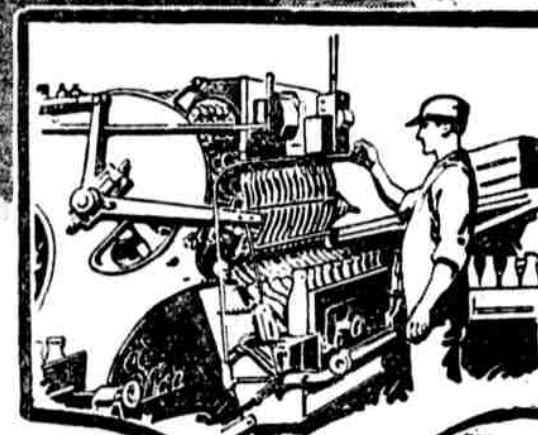
A Vast Organization is Required to Fill This Bottle



ONE of the farmers who supply Abbotts Milk starting for our Country Receiving Station.



MILK testing scene in one of our laboratories, which we maintain both in the country and city.



ABBOTTS were first to introduce these great, new bottle-washing machines, which insure sparkling, crystal-clear bottles, absolutely sterile.



A FEW of our wagons in Philadelphia, receiving their load of milk for delivery to your home.

CONSIDER the large organization employed in producing and safeguarding Abbotts milk.

Every day an extensive group of farmers supply the immense volume of milk needed for Abbotts customers.

Every day the army of Abbotts workers in our country receiving stations, in our city plants in Philadelphia, Atlantic City and Wildwood, receive and ship the milk, test, pasteurize, bottle and deliver it to thousands of homes in these cities.

And at every stage of its handling, from the farm itself, the freshness, purity and quality of Abbotts milk are safeguarded by our Laboratory Control.

The man on the Abbotts wagon will take your order for service. Or telephone Baring 0205.



ABBOTTS

ALDERNEY DAIRIES, Inc.

Philadelphia Atlantic City

Wildwood Ocean City Pleasantville

Abbotts

"A" MILK

THE NIXON-NIRDLINGER THEATRES

BELMONT 522 ABOVE MARKET
"THE QUEEN OF SHEBA"

CEDAR 90TH & CEDAR AVENUE
WILLIAM FARNUM
in "SHAKLES OF GOLD"

COLISEUM Market bet. 59th & 60th
TOM MIX
in "THE FIGHTING STRIKE"

JUMBO FRONT ST. & GIRARD AVE.
PEARL WHITE
in "WITHOUT FEAR"

LEADER 41ST & LANCASTER AVE.
WALLACE REID
in "THE DICTATOR"

LOCUST 522 AND LOCUST STREETS
"THE FAST MAIL"

NIXON'S AMBASSADOR 56th and
Maitland 130 and 300. Evenings 7 and 9
"A FOOL THERE WAS"

RIVOLI 522 & KANSAS STS.
MARY CARR in
"OVER THE HILL"

69TH ST. Theatre—Opp. I. Terminal
MAY MACAVOY
in "TOP OF NEW YORK"

STRAND 6th Ave. at 10th St.
THOMAS MEIGHAN
in "IF YOU BELIEVE IT, IT'S SO"

AT OTHER THEATRES MEMBERS OF M.P.T.O.A.

GERMANTOWN 5510 Germantown Ave.
HELENE CHADWICK
in "YELLOW MEN AND GOLD"

GRANT 4022 GIRARD AVE.
Wallace Reid & Lillian Gish
"THE FATAL MARRIAGE"

JEFFERSON 29th & Dauphin Sts.
CONSTANCE TALMADGE
in "THE PRIMITIVE LOVE"

PARK RIDGE AVE. & DAUPHIN ST
HELENE CHADWICK
in "YELLOW MEN AND GOLD"