

RAIL STRIKE MUST BE SETTLED FIRST

Couldn't Move Coal Now Even if Miners Went Back to Work

WANT STRONGER U. S. BOARD

By CLINTON W. GILBERT
Staff Correspondent Evening Public Ledger
Copyright, 1922, by Public Ledger Company
Washington, Aug. 1.—While the Administration is hopeful that its plan for the settlement of the railroad strike will be accepted by both the executives and union leaders, no one here expects and union acquiescence by the former. The sending of Secretary Hoover to New York to talk to the executives indicates an appreciation of the difficulties.

Mr. Hoover is the Administration's most effective spokesman in industrial disputes. He is a big business man himself and talks the language of those who will meet in New York. He will present to the railroad presidents all the consequences that will spring from a protraction of the strike. The economic future of the country for the next year will be decided by the men who accept or reject the Harding proposals today. Every business in the United States is more or less at the mercy of the few leaders of the executive and of the shopmen.

As it is now, no one questions that unfortunate effects from both the railroad and mine strikes will be felt by the

business of the country for several months to come.

Even if both mine and railroad strikes could be ended today, their consequences would be felt for a long time. A certain disorganization of the railroads will continue after the men have gone back to work. Railroad stock is out of repair. This situation will be aggravated if the strike lasts.

But more serious is the fuel situation. The settlement of the coal strike hangs upon the settlement of the railroad strike. If both were ended it would still be months before the Federal control of fuel distribution could be relaxed.

With the railroad strike going on, nothing is to be gained by seeking an end of the coal strike. Even if the mines were running full time, with the progressive disintegration of railroad service, it would be impossible to supply the country's needs of coal.

For this reason efforts to end the coal deadlock have been relaxed by the Administration pending a settlement of the railroad strike. No one here is especially hopeful of the joint conference of strikers and operators which John L. Lewis has called next Monday in Cleveland.

The optimism of the unions is regarded as propaganda to convince the public that the mine strikers are seeking peace. If a conference is refused by the coal operators or if the coal operators prove obstinate in the conference, the miners hope to gain favor with the public.

With both strikes continuing a few weeks longer, the recovery of business which has recently started will be seriously set back. It is arguments like this which Mr. Hoover will urge upon the railroad executives in New York today.

He will also urge upon them the importance of that feature of the President's plan which calls for the recognition by both sides of the authority of the Railroad Labor Board.

Hitherto both the railroads and their

employees have accepted or rejected the Labor Board's rulings as they saw fit. Legally they are free to do so, the board having no power to enforce its decisions.

The weakness which President Harding especially feels in an industrial crisis is the utter lack of authority of the Federal Government. He has alluded to it many times, most recently in his letter to Governor Grovesbeck, of Michigan.

A few men, whether employers or labor leaders, can impair the industrial prospects of the country, involving great loss to the public, and the Administration can do nothing about it. The utmost that public authority is capable of is to guarantee the protection of workers who are willing to take the place of strikers. This it has done in both coal and railroad strikes, but without adding to the production of coal or to the operation of trains.

An agreement by both railroad executives and shopmen to respect the decisions of the Labor Board would be the first step toward establishing the authority of the Government. It would, of course, not bind any other railroad unions or the railroads in their relations to them, but it would open the way to the extension of this principle to the whole railroad industry, and it would perhaps lead to its acceptance in the coal industry.

One aim of the President is to establish a public body whose decisions will be accepted by miners and mine operators. No one expects that the principle of compulsory arbitration will be fully accepted, but an effort will be made to establish a great measure of authority for boards like the Railroad Labor Board.

SHORT CROPS IN RUSSIA
Continued reports as to crop conditions in Russia are contradicted by prominent physician, who says next harvest will be made on one-sixth of ground usually tilled. Definite facts, as well as authoritative opinions, are called for by Fery Nomi, a special correspondent, one of many regularly supplying foreign news to the Public Ledger. "Make it a Habit."—Adv.

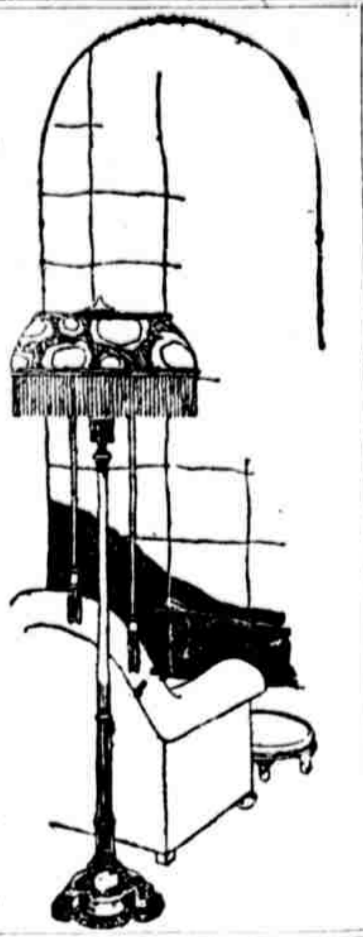
STRAWBRIDGE & CLOTHIER

Thousands of Dollars' Worth of Good Furniture Bought When Manufacturers' Prices Were at Bed-Rock

Now in the Semi-Annual Furniture Sale at Corresponding Price Advantages to You—Savings of 25 to 33 per Cent.

These great special purchases, however, comprise only a part of the great collection of Furniture here for you to choose from. Our entire regular stock is included, at sharp reductions from prices already attractively low, and please bear in mind that this is all NEW Furniture—most of it having been here less than one month. When you buy Furniture, you make a lifetime investment. Therefore, you should buy it carefully, after judging by actual comparison where values are best.

By all means compare—for only by comparison will you effect the greatest savings. Incidentally, such a comparison demonstrates just wherein this Sale excels.



The House that Heppe built

Founded in 1888
Inaugurated the One-Price System in 1881
Downtown—1117-1119 Chestnut Street
Uptown—6th and Thompson Streets

Special Summer Sale Pianos and Players

A special offer of excellent values in exchanged pianos and player-pianos. Every piano in this sale has been rebuilt and is guaranteed for five years and exchangeable at full price paid any time within one year. Over 200 instruments from which to make your selection. Many world-famous makes. An exceptional opportunity.

Pianos, \$85 up
only \$5 monthly

Players, \$295 up
only \$10 monthly

Grands, \$325 up
only \$12 monthly

Comprise a variety of sizes and styles in such makes as Chickering, Steinway, Miller, Weber, Decker Bros., etc., etc.
Call, phone or write at once.

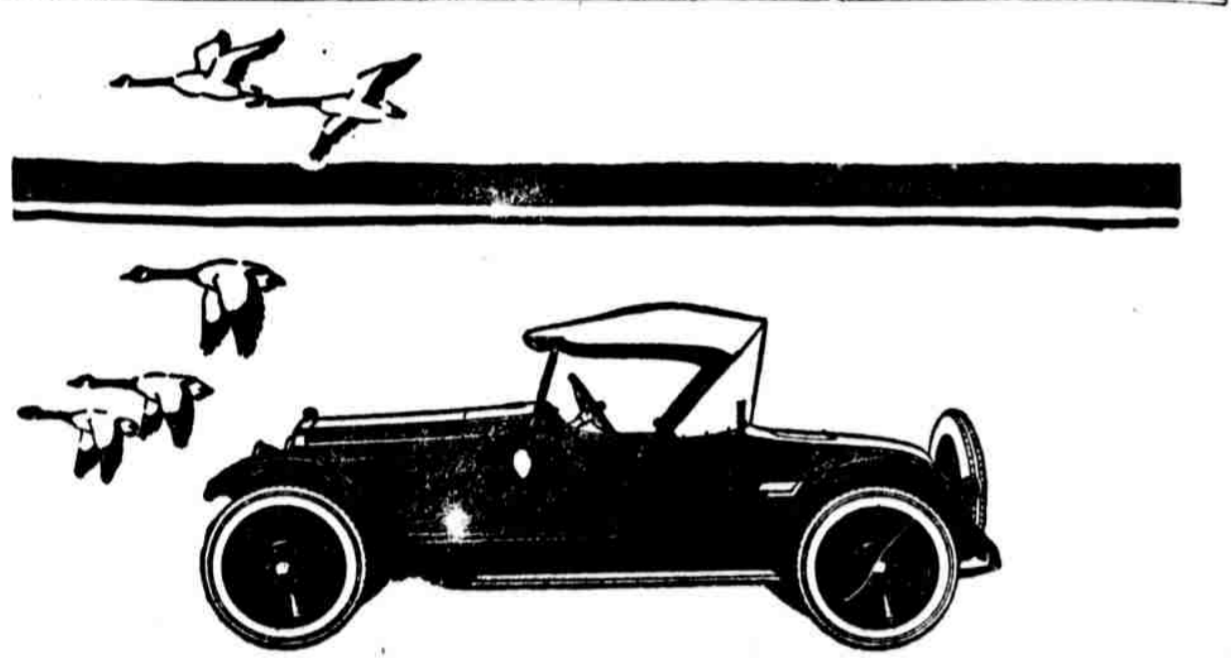


New Victor Records
August list on sale

To-day

Come in to Heppe's and hear the new selections. Heppe's have large, comfortable hearing rooms and trained salesmen to assist you.

Victrolas \$29.50 up



Special Summer Showing Wills Sainte Claire Roadster All This Week You Are Invited

WILLS SAINTE CLAIRE COMPANY of PENNSYLVANIA
W. F. ROSS, President
2031-2033-2035 Market Street Philadelphia, Pa.

WILLS SAINTE CLAIRE Motor Cars

Clearances Women's Dresses Half Price and Less

Dresses of imported linen, imported dotted Swiss, imported gingham and rattice; dark and light shades, and an excellent assortment of models—\$12.50.

Hand-made Dresses of handkerchief linen and fine voile, with hand-embroidery and hand-drawnwork—the finest Frocks of the season in an excellent assortment of colors—\$14.75.

Strawbridge & Clothier—Second Floor, Market St.

Coats and Capes at Reductions of One-Third or More

Plain-tailored tweeds, belted all around, yoke and sleeves lined, a few lined throughout—\$13.75.

Belted Coats of light-weight tan cloaking, about three-quarter length and silk-lined throughout—\$15.00.

Serge Capes in black and navy blue, made on long, plain lines, silk-lined throughout—\$20.00.

Strawbridge & Clothier—Second Floor, Centre

Odd Lots of White Cotton Suitings

Thousands of yards in all, linen-finish and oxford weaves, also a lot of sturdy twill cords—25c.

Strawbridge & Clothier—Alma 11 and 12, Centre

All Fine Trimmed Millinery About One-fourth of the Original Prices

Also Sports Hats at the same reduction. Paris, London and New York Hats and others from our own workrooms—all at this sweeping clearance reduction.

Second Floor, Market Street, West

Misses' High-Grade Suits and Dresses

Lace Dinner Dresses, in tan, henna and jade, light and dark colored Street Dresses, and Afternoon Dresses of plaited Georgette, Georgette-and-Foulard Combinations, and low-waisted Canton Crepe Dresses with side draping, loose panels, self-color embroidery, fagoting, beading and braiding—\$29.50 to \$45.00.

Tweed, Honespun and Trelaine Suits; rose, cadet, brown, tan and heliotrope; double- and single-breasted, severely tailored Suits; plaited-back and slashed-seam, belted Suits; some braid-bound; sizes 14 to 18 years—\$19.50 to \$29.50.

Second Floor, Market Street

Entire Stock of Women's Low White Shoes Reduced

Many about half price, and the least reduction is about one-third. Pumps and Oxfords in a variety of the season's best styles, some smartly combined with black patent leather. Chiefly canvas, glazed kidskin and genuine buckskin—now \$3.75, \$5.75 and \$8.75.

Strawbridge & Clothier—Eighth and Fifth Sts.

Clearance of 6000 Women's and Men's Handkerchiefs Many at Half Price

An accumulation of Handkerchiefs, not quite as fresh as new, but all excellent values. Plain, embroidered, some initialed, also sports styles in the lot. Men's and Women's Handkerchiefs, now 10c to 35c each.

Strawbridge & Clothier—Market Street across Alley

The Indispensable Silk Costume Slips \$5.00

An Unusual Value

White crepe de chine, with self straps and a deep hem, and trimmed with rosebed and lace; others of crepe de chine simply hemstitched; and one model of radium silk with ribbon shoulder straps and beautifully lace-trimmed—unusual at \$5.00.

Strawbridge & Clothier—Third Floor, West

Special Mattress Values Ready for Home Furnishers

Select your Mattresses here where quality and prices are right.

Hair Mattresses, weight 45 pounds, in one or two parts, very unusual—\$50.00. Of good mixed hair, weight 45 pounds, in one or two parts—\$40.00; of black mixed hair, one or two parts—\$32.50.

S. & C. Special Hair Mattresses—weight 45 pounds, in one or two parts—\$29.75.

Felt Mattresses, weight 50 pounds, full size, with roll edge, at \$11.75, \$13.50, \$15.50, \$18.75 and \$26.00. All of selected cotton stock, covered with good ticking. Special sizes made to order.

Woven Wire Springs, special—\$10.50. Box Springs for wood or metal beds—\$18.50. Strawbridge & Clothier—Floor 24, East

Household Linens at Special Sale Prices

These are our regular good Linens, the kind that are known far and wide for their exceptional beauty and quality.

Fine Double Damask Table Linen, Special at \$4.00
Attractive designs. Width, 72 inches. Pillow Cases—\$2.00 a Pair
Hemstitched Pillow Cases of fine round-thread linen; size 22x36 inches.

Fancy Linen Pieces
Doilies, Centrepieces, Lunch Cloths and Scarfs of round-thread linen in dainty scalloped effect, with hemstitching.

ROUND—from the six-inch size at \$1.00, to 54-inch size at \$3.00.
OVAL—from the 6x12-inch size at 20c, to the 18x27-inch at 60c.
OBLONG—from the 6x12-inch size at 20c, to the 18x54-inch at \$1.50.

Strawbridge & Clothier—Alma 11 and 12, Centre

Boys' Sports Blouses Worth Half More to Triple This Price—55c

A clearance of these cool, comfortable Sports Blouses at a very low price. All have low rolling collar and short sleeves. Made of fancy striped percale and madras, plain tan cotton pounce and white madras.

Strawbridge & Clothier—Second Floor, East

White Dotted Swiss Breakfast Coats and Long Negligees

Fresh, cool, dainty. Some with lace-trimmed neck and sleeves, some with lace-trimmed collars, some finished with embroidered scallops. One long, loose model with shirring. The Breakfast Coats are prettily finished with narrow plaitings—notice the lovely, frilly model sketched. Price \$1.95.

Strawbridge & Clothier—Third Floor, Fifth St., West



Men's Soft Collars Delpark Brand—50c

Three new, smart styles have arrived for summer wear. Perfect in every detail, they will appeal to the most critical men.

Strawbridge & Clothier—Alma 11, Market Street

We Have Further Reduced The Clearance Prices of About 2000 Men's Suits

All the Spring and Summer Suits still on hand in the clearance, have been re-grouped and marked at still greater reductions to hasten their departure. To speed out the assortments we have added several hundred Suits, marking them at corresponding reductions. A splendid opportunity for men who HURRY!

Now Further Reduced to \$13
Conservative Suits of handsome worsted fabrics and the ever-popular blue serge. The saving is considerably more than one-half.

Now Further Reduced to \$16
Also other good Suits, including some fine silk-lined sample Suits that were made to sell for more than double this price.

Now Further Reduced to \$21
A group of Alco, Wickham and other fine Suits in a variety of styles and fabrics for men and young men. Savings of one-third to one-half.

Now Further Reduced to \$26
Suits of fine worsteds and cassimeres in youthful and conservative styles. An excellent group—every Suit at a worthwhile saving.

Now Further Reduced to \$36
Hundreds of our finest Suits, including many of Hare, Schaffner & Max make. Smart styles and fine fabrics beautifully tailored.



Our Entire Stock of Extra-Trousers Suits in Three Groups at These Clearance Prices—\$16.00, \$21.00 and \$26.00

Strawbridge & Clothier—Second Floor, East

Blouses in Extra Sizes

Fashioned to give a slender effect, and perfectly proportioned for full figures. Not large copies of regular-sized Blouses—but Blouses modeled on full figures, insuring fullness where most desired.

Silk Over-Blouses and Blouses, \$8.00 to \$18.00

Crepe de chine and crepe Georgette in navy blue, black, white and flesh color. The blue and black trimmed with plaitings, or beaded in steel, iridescent or crystal beads. The flesh and white daintily tucked, and trimmed with Valenciennes, fllet or Irish crochet lace.

Cotton Over-Blouses and Blouses, \$2.25 to \$6.75

Voiles, including fine French voile, also batiste and dimity, daintily tucked and trimmed with plaitings, elaborately embroidered or lavishly trimmed with Valenciennes, Irish crochet or fllet laces.

Strawbridge & Clothier—Second Floor, Centre

These Net Corsets Are Wonderfully Cool

Thousands of women wear them with great satisfaction and comfort. Low or medium bust, long skirt, well boned or lightly boned. Sizes 21 to 30 at \$1.50; sizes 31 to 36 at \$2.00.

American Lady Corsets, \$2.50

Of fine white coutil and pink broadie; low bust, long hips, radiating front clasp; designed for the average stout figure.

Pansy Corsettes—\$1.00

Pink broadie, hook-back model with elastic section over hips.

Bandeau Brassieres—38c

Of pink broadie in hook-back style, with elastic section.

Strawbridge & Clothier—Second Floor, Market Street, West

Fluffy, Ruffled Frocks Like These In a Clearance \$1.50

Nearly All Worth Double, Some Worth Much More

A clearance of all the fine Little Organie Frocks, fluffy and ruffled, many delicately tinted—all very party-like, for little tots from two to six years of age. And nearly all these Frocks have the loveliest, cushiest, and several models have touches of hand-work. The very finest Organie Frocks we have had this season.

Strawbridge & Clothier—Third Floor, West

Bedfurnishings at Attractive Prices

PURE WOOL PLAID BLANKETS—in dainty color combinations; double-bed size, 70x80 inches, \$12.00; a pair 72x84 inches—\$17.50 a pair.

PURE WOOL-FILLED COMFORTABLES—coverings of plain silk, attractively stitched—\$15.00.

CROCHET SPREADS—in Marseilles designs; 78x88 inches—\$2.50.

PILLOW CASES—the S. & C. muslin Pillow Cases, 45x36 inches—\$2.50.

SHEETS—S. & C. Bleached Muslin Sheets, 81x99 inches—\$1.85.

Strawbridge & Clothier—Alma 11 and 12, Centre

Mattress Protectors—muslin covering, closely stitched; double-bed size, 54x76 inches, \$2.95; single-bed size, 42x76 inches, \$2.50; crib size, 27x34 inches—95c.

Strawbridge & Clothier—Alma 18, Centre