

LANSDALE AGAIN BEATEN BY SMITH

Montgomery County Champion Bows to Store Team in Abbreviated Contest

OPPOSE THE SPHAS TONIGHT

The Marshall E. Smith team again headed Lansdale, of the Montgomery County League, a setback at Tenth and Butler streets last night when the store boys romped off with the decision in a seven-inning game, 6 to 3.

Fitcher Zophi was on the bill for the home team, and was in his best form. He fanned eight of the opposition and held them to eight hits, all of which came in the first and second sessions.

Wilkie started for the visitors, and after the store boys found his curves for a pair of runs in the second, was supplanted by Blindt, who was socked for four runs in the third.

The feature was the home-run drive of David, which came in the third and scored a pair of runners ahead of him. Both teams played errorless ball in the field, and the work of Reed in left field was sensational.

The Smith team will play a special game at home with the South Philly Hebrews tonight. The downtowners were originally scheduled for three games in Richmond, Va., but they were cancelled by the authorities. The Sphas have already arranged a game for tomorrow night at Thirteenth and Johnson streets with Hilldale. The series between the two teams is now a dead-lock.

The Sphas were again beaten last night by the South Phillies at Broad and Bigler streets. The feature was the playing of Howard Lohr, who won the decision single handed. The score was 4 to 2.

In the opening session his triple counted Spaulding and Lai and then he scored himself and in the sixth he counted again. Kelleher, who defeated the Sphas before, was the winning pitcher, and Krepps was again on the losing end.

Player Braun, of the South Phils, was banished last night by Umpire Bill Wassner for disputing a decision. He was on the side line and Wassner took exception to his remarks and chased him off the field.

LEGION PLAYS 48TH WARD

McCall Post Nine Opposes Down-towners at 48th and Walnut

One of the newcomers in baseball the last month is the team representing the McCall Post. The Legion lads have a fast club, even better than the ordinary run of teams, and many of the players in the line-up are stars who could readily be associated with the biggest teams in the city.

But they prefer to continue their identity without the slightest financial remuneration. The post has outclassed the majority of opponents played, and in the future only the best teams will be played at the home field at Forty-eighth and Walnut streets, which is the former Donovan-Armstrong field. The attraction tonight is Forty-eighth Ward.

Lester Has Dates Home and Away. The Lester A. C. after a long dispute.

General Motors Trucks

A Wider Hauling Range

- 1 Two Range Transmission
- 2 Removable Cylinder Walls
- 3 Radius Rods
- 4 Pump and Thermo-Syphon Cooling
- 5 Removable Valve Lifter Assemblies
- 6 Pressure Lubrication
- 7 Instantaneous Governor

GMC trucks can do more hauling because they have the power to travel where other trucks cannot go, as well as the speed to out-distance others on the road.

This double ability is possible only through the GMC Two-Range Transmission. It makes these trucks better revenue producers for their owners and opens up new and broader fields for motor truck haulage.

GENERAL MOTORS TRUCK COMPANY
 Division of General Motors Corporation
 PONTIAC, MICHIGAN
 Direct Factory Branch
 205 NORTH TWENTY-SECOND ST.
 Philadelphia, Pa.
 Spruce 2076 Race 7859
 1 Ton, \$1295 2-Ton, \$2375 3 1/2-Ton, \$3600 5-Ton, \$3950
 Chassis only—At the Factory—Tax to be added

Economy Basement Specials for Thursday

SNELLENBURG'S
 ENTIRE BLOCK—MARKET 11th to 12th STREETS

Our August Bed Muslin Sale
 Continues to Offer Extraordinary Values!

- \$1.69 81x90 "Winmore" Bleached Seamless Sheets 98c**
 Made for and sold by us exclusively.
- | | | |
|--|--|--|
| 32c and 34c Pillow Cases... 25c | 55c Bolster Cases... 45c | \$1.79 Hand-Cut Scalloped Sheets... \$1.29 |
| Our Girard make. Bleached. Sizes 42x39 and 45x36 inches. | Size 42x72 inches. Made of a good sheeting. | Bleached and seamless. Size 81x90 inches. |
| 42c Hemstitched or Scalloped Pillow Cases... 35c | 10c 36-Inch Bleached Cheese Cloth, Yard... 5c | Pillow Tubing |
| Our Girard make. Size 45x36 inches. | 69c Initialed and Scalloped Pillow Cases at... 39c | Hem and you have a pillow or bolster case. |
| 59c Featherproof Ticking... 39c | Made of fine, bleached, twilled muslin. | 40c 36-inch Tubing, yard... 36c |
| Best make. Large and small lengths. | 23c Unbleached Sheeting, Yard... 16c | 45c 40-inch Tubing, yard... 40c |
| 21c Yd.-Wide Bleached Longcloth, Yard... 15c | 40 inches wide. Extra heavy quality. | 47c 42-inch Tubing, yard... 42c |
| | | 52c 45-inch Tubing, yard... 45c |
- 25c Fruit-of-the-Loom 36-Inch Bleached Muslin, at 15c**
 Also other standard makes at this price. Long and short lengths. No mail or phone orders filled. Limit of 20 yards to customer.

Men's 25c, 35c & 50c Webbing & Pique Collars



at 15c ea.
 An assortment of odds and ends of really high-grade soft collars, including the famous Delpark collars of imported pique and webbing—slightly imperfect. Also madras and pique collars. Sizes 13 1/2 to 17 1/2—some quarter sizes, too. Share and Save!

Special New Lot of Women's \$3.00 Worsted Sweaters at \$1.69 ea.
 Low neck and short sleeve models of plain and novelty weaves. Pink, white and honey. Also round neck and long sleeve sweaters in blue, jade, etc. Note the Saving!
Women's \$3.00 Chic Bathing Suits \$1.95 at...
 Attractive models of good quality saten, smartly trimmed in colors. Pocketed and belted.

Great Pre-Inventory Clearance of Girls' \$3 Summer Dresses at \$1.49 ea.



Mercedized line dresses in two-piece styles. Blouse is shirred at waist and finished with white piping and Peter Pan collar. Skirt is plaited. Half Price!
 Gingham frocks in neat checks. Trimmed with large lawn collar, pocket and sash.
 Sizes 6 to 14 years. Each style is illustrated.

Women's \$3 C-B Corsets at \$1.39

Medium bust or girder top. White coutil. Sizes 21 to 26.
 65c Bandeaux... 19c
 Hook back.
 SNELLENBURG'S Economy Basement

Extra-Size Undermuslins

Women's Extra-Size Envelope Chemises at, Each... 59c



August Furniture Sale

- Lower Prices a Third, Half and More**
- | | | |
|--|--|--|
| \$8.00 Porch Rockers at \$4.49 | \$6.25 Rockers, at \$2.95 | \$2.25 Break-fast or Kitchen Chair, \$1.49 |
| Of maple with double reed seat and back; a sturdy comfortable chair. | Choice of mahogany or walnut finishes. High backs and cane seat. | Broad back, well braced to deep wood seat. |
- \$35 Massive Brass Beds, \$22.50**
\$30.00 Five-Piece Dining-Room Suit, \$19.75
- | | | |
|--|--|---|
| \$60 Dressing Table, \$22.50 | \$30 Solid Oak Buffet, \$16.95 | \$35 Davenport Bed, Complete, \$22.75 |
| Only 25 of these dressing tables in walnut or mahogany—Period designs, taken from suits, triplicate adjustable swinging mirrors. Beautiful piece of furniture. One pictured. | Highly polished. Large mirror, deep drawers and spacious cupboard. | All-steel sanitary frame, guaranteed spring, covered in beautiful cretonne. |
- \$16.00 Oak Chiffonier, \$9.95**
\$8.00 Steel Folding Cot and Pad to Fit at \$3.95
- \$15.00 Metal Bed, \$8.95**
- \$24.50 Metal Bed Outfit, \$15.75**
- \$22.50 Box Springs... \$13.95**
- These mattresses are guaranteed all new materials—made to your order when purchased. We request you to have correct measurements with you to avoid inconvenience and delay. All made with heavy stitched roll edge.
- \$12.00 Cotton Mattress... \$6.49**
\$17.50 Pure Felt Mattress... \$9.75
\$15.00 Hair and Felt Mattress, \$8.95
- Sanitary Mattresses**
 2-inch continuous post, with 1 1/2-inch cross panel box. Ten 1-inch filler upright. All sizes in white or ivory finish.
- 63-spiral springs, 4-tines-tied, cotton top, covered in good grade ticking. For wood or metal beds. When ordering state which.**

Pretty built-up shoulder models, trimmed with neat embroidery edge. One pictured.

Women's Extra-Size Nightgowns 69c

Generously proportioned of lingerie cloth in simple tailored style.
 SNELLENBURG'S Economy Basement

Women's Extra-Size Bungalow Aprons at 89c



Trim models of checked percale, trimmed with rickrack braid, sash and pocket. Also regular sizes.
 SNELLENBURG'S Economy Basement

Children's Undermuslins

Children's Muslin Combinations 59c at...
 Made of excellent quality material, lace or embroidery trimmed. Sizes 2 to 6 years. One sketched.

Children's Nightgowns... 49c

Muslin, with low neck and short sleeves, prettily trimmed with stitching. Sizes 4 to 12 years.

Children's Combinations... 64c

For both boys and girls. Made of cross-bar muslin. Sizes 2 to 14 years.

Infants' Shirts 25c

Cotton, with low neck and short sleeves. Sizes 6 months to 2 years.

Infants' Hand-Crochet Booties... 35c

SNELLENBURG'S Economy Basement

Substantial Price Reductions in This Sale of Window Shades

- | | |
|--|-----|
| 98c Water Opaque Shades, 36x72 Inches, Each... | 55c |
| \$1.20 Machine Oil Shades, 36x72 Inches, Each... | 75c |
| \$1.39 Hand-Made Oil Shades, 36x72 Inches, Each... | 95c |
- These shades are all perfect. Mostly all colors. Mounted on a good roller.
 Note! We will make to order, at special prices, larger sizes to match any of the above shades.

\$2.98 Ready-to-Hang Awnings \$1.49 each

Made of heavy brown and tan stripe. Scalloped and bound with white braid. Sizes 30 and 36 inches. Complete with fixtures.
 SNELLENBURG'S Economy Basement

1000 Pairs of \$8.00 White Wool Blankets To Sell at \$4.98 Pair

Woven from fine long lamb's wool on spun cotton warp. White, with pink and blue borders and 4-inch colored binding. Double-bed size.
\$8.00 Satin-Finish Bed Sets \$4.95
 Scalloped bed spread in Marseilles design with cut corners and bolster throw to match. Full size.
 SNELLENBURG'S Economy Basement

Light-Weight Luggage Specials!

Genuine Cowhide Traveling Bags
 Leather Lined
 at \$3.94 ea.
 Strong, sturdy back bags in 18-inch size. Made of split cowhide in long grain, with substantial frames and sewed seams and corners. All with real leather lining and with inside pocket.

Mail and Phone Orders Filled

Remarkable Lot of 175 Genuine Du Pont Fabrikoid Bellows Suit Cases

\$4.94
 Made with strong leather straps running all around; good locks and catches, fitted with 4-inch extension below; 26-inch size. Brown and black.
 SNELLENBURG'S Economy Basement

N. SNELLENBURG & CO.

LOUIS C. BLOCK

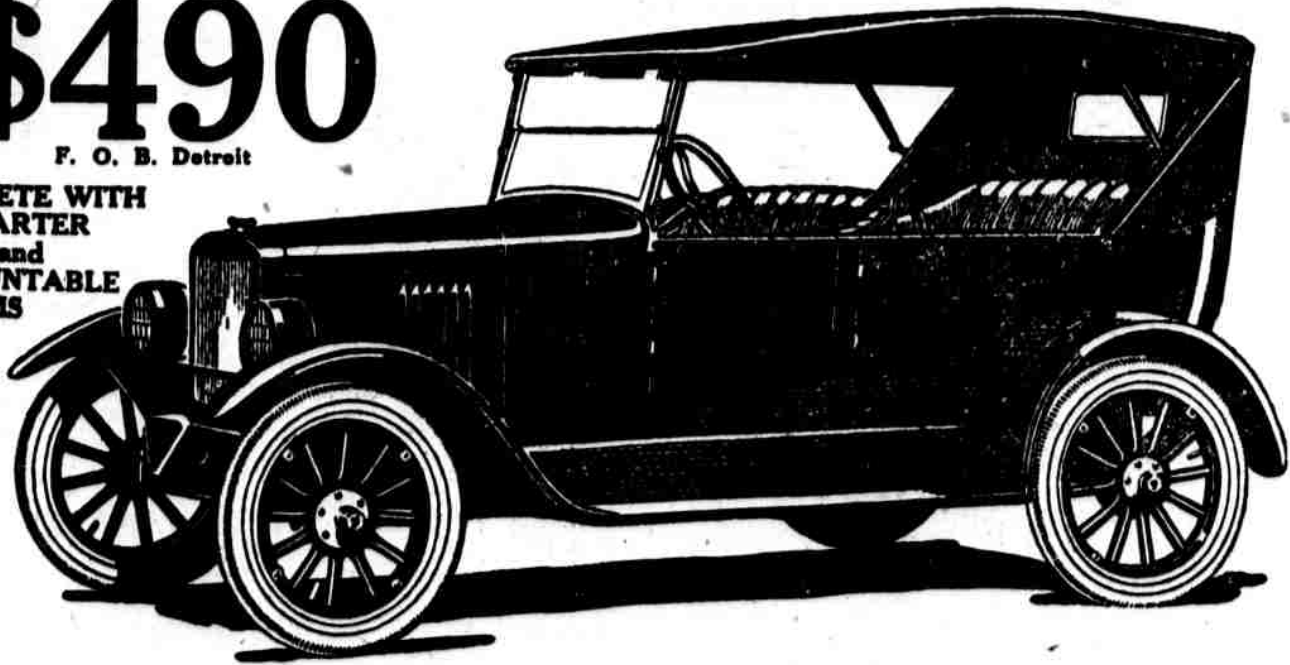
Now Has On Display the

NEW Gray CAR

At Its Philadelphia Home, Cor. Broad and Race Sts.

\$490
 F. O. B. Detroit

COMPLETE WITH STARTER and DEMOUNTABLE RIMS



A QUALITY, LOW-PRICED COMFORTABLE CAR

- | | |
|--|-------------------------------------|
| Double-Cantilever Rear Springs | Standard Shift 3-Speed Transmission |
| One-Man Top | Ventilating Windshield |
| Kelsey Natural Finish Wood Wheels | United States Tires |
| Westinghouse Starting, Lighting and Ignition | Timken Front and Rear Axles |
- A Wonderful Motor Made by the Gray Motor Corporation**
 Manufacturers of the Famous Gray Marine Motors
 These Specifications Insure the Quality
 A Ride Will Prove the Comfort and Performance
 Come and inspect the chassis and touring car or take a ride in our demonstrator

LOUIS C. BLOCK

Distributor for Eastern Penna., New Jersey, Maryland and Delaware.

Cor. Broad and Race Sts.