

One of the Busiest Schedules of the Season Prepared for Twilight Local Baseball Fans Tonight

WEST PHILA. RIVALS IN THIRD CONTEST

Stonehurst and Strawbridge & Clothier Meet Tonight at 62d and Walnut Sts.

FLEISHER AT SOUTH PHILS

Another neighborhood feud in the independent baseball world will be renewed this evening at the grounds of the Strawbridge & Clothier team, at Sixty-second and Walnut streets, when Stonehurst and the store boys come together in the third game of their series.

Strawbridge won the first clash when McMillan produced a homer in the tenth and won 11-10, but Stonehurst came back and outplayed the store boys in their second meeting by a large score. The Stonehurst records show the club has not lost a series with any team. The batting averages have been .315, the highest in the league, with a percentage of .410, having made fifty-five hits in thirty-six games. Ebert is second, with .400, McHenry, who is third, is one of the hardest hitters in independent ranks, and Rudolph, who is fourth, has been a big help in many of the Stonehurst victories. The averages follow:

	G.	A.B.	R.	H.	P.C.
Mullin	36	184	30	53	.410
Ebert	35	178	25	51	.393
Rudolph	24	112	27	38	.339
McHenry	23	108	19	35	.324
Harris	22	105	18	32	.305
Shaw	10	58	8	17	.293
Lucas	8	45	7	12	.267
H. Nash	3	114	20	29	.254
Green	12	65	4	17	.262
Nash	2	11	1	2	.182
Gluck	2	11	1	1	.091
Dougherty	2	13	0	1	.077

Nashville at Stanton
Stanton Field Club will entertain Nashville Giants at Phil-Ellen and Musgrave streets. "Liz" Powell's pals have been about splitting even the last two weeks, while for the month previous they were hitting a mark of .400 in victories. Some of the recent defeats have been close, a run or so, and the Giants have a mean wallop, which was demonstrated at Bridesburg on Saturday, when they came from behind in the ninth and nosed out Bill Whitman's club.

John Castle has provided West Philadelphia fans with one of the best contests of the season in securing the Philadelphia Terminal Club. They are rivals for the sectional championship of West Philadelphia, and in the games played this year the competition has been exceedingly close and exciting. The same condition should rule again, as

Tonight's Twilight Games

TODAY'S SCHEDULE:
Stonehurst at Strawbridge & Clothier, Sixty-second and Walnut streets.
Stonehurst at Philadelphia Terminal Club, South City Hill, between Hillside, Cambridge and Chestnut streets.
Fleisher at South Phillies, Broad and B'way streets.
Northwest Pros at Greenwood Post Talk and Ann streets.
North Philadelphia at Stanton Field Club, Phil-Ellen and Musgrave streets.
Philadelphia Terminal Club at Philadelphia Terminal Club, South City Hill, between Hillside, Cambridge and Chestnut streets.
Philadelphia Terminal Club at Philadelphia Terminal Club, South City Hill, between Hillside, Cambridge and Chestnut streets.

Northwest Pros Still After Dates
One of the busiest teams around the city is the Northwest Professionals. If it were possible their energetic pilot, Hoover (no relation to Walter), would have them playing every night in the week. The team itself is going in good shape, winning the majority of its games. Manager Hoover's most recent letter received yesterday is that July 16, 22 and 23 are open and no first-class home team is barred. He also adds that many twilight dates are open, and would like to have his stars shine. Write or phone J. Hoover, 2028 North American street. Bell, Columbia 0850.

New Team in Field
The Bywood A. A., a new team, representing the town of Bywood, which is just about a half mile west of Sixty-ninth street, in the field, and is using the Stonehurst team's old field. Among the teams that have been defeated are West & Co., E. B. Smith & Co., Hamilton Club, and the American League. The Bywood team is managed by J. Griener, 7021 Ponce de Leon, Bywood, Pa.

SECURES HOME GROUNDS

West Philly Giants Use Shanahan Field Two Nights Weekly
Manager Al Ringgold has recently consummated a deal whereby the West Philadelphia Giants will use the Shanahan field, at Forty-eighth and Brown streets, two nights a week. The Giants are one of the best of the many colored teams in this locality and have selected Monday and Thursday as home nights. Manager Ringgold is arranging his schedule, which includes Fralinger, Sphas, Bartram Park, Hilldale and Bacharach Giants. He has Pitchers Baptiste, former Cuban X-Giant; Caldwell, of the Chester Giants, and Moore, from Bacharach.

Moore, a Philadelphia high school lad, is doing most of the receiving, while the rest of the team is: Morris, first base; Garfield, second base; Wilkinson, shortstop; Stewart, third base; Wright, Lee and Goodall in the outfield. The utility men are Scribner, Odee and Farrell. Games for the Giants can be secured through Art Summers or Manager Al Ringgold, 4510 Fairmount avenue.

Druiding Has Open Date
The Druiding Brothers baseball team is open for a game away from home this Saturday. Address: Charles Carter, 518 West Susquehanna avenue.

Yesterday's Semi-Pro Scores

Nativity, 5; Bacharach Giants, 2.
Bridgeway, 12; Logan, A. A., 1.
Fleisher, 4; South Phils, 0.
Stonehurst, 4; Philadelphia Terminal Club, 1.
Fleisher, 4; South Phils, 0.
Stonehurst, 4; Philadelphia Terminal Club, 1.
Fleisher, 4; South Phils, 0.
Stonehurst, 4; Philadelphia Terminal Club, 1.

MONOTYPE PLAYS TONIGHT

Opposes Thornton-Fuller Team at 47th and Spruce Streets
An exciting game is expected when Monotype A. A. meets Thornton-Fuller this evening on the Monotype field, at Forty-seventh and Spruce streets. On Friday night the Monotype team will take on the Southwark Men's Club at the Monotype grounds, and on Saturday day these teams clash again at Southwark grounds, Mifflin street and Meadows avenue.

Monotype has been hitting a fast pace from the start of the season, and the record to date is fourteen victories out of fifteen games played. Crouse, who pitched a shut-out game against the Norwood Pros on Saturday last, will start tonight. Schuster, former U. of P. twirler, will take the hill Friday.

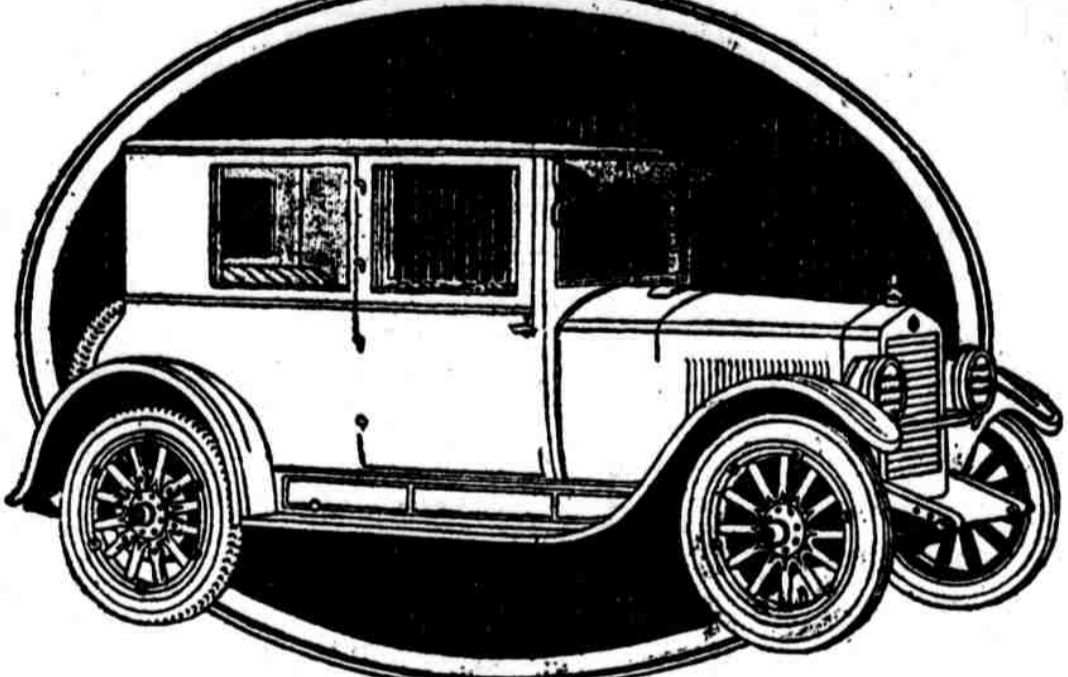
Amateur Sports

The Second Ward A. A., semi-pro, traveling July 15 and 22 open. P. Williams, 1937 South Juniper street.
The Belmont B. C., sixteen-eighteen years, Saturdays and Sundays open. Samuel J. Stark, 2438 North Napa street.
Waco A. A. has acquired the services of Ralph Colon and Joe Martinez, former Porto Rico All-Stars, first class, away. Saturdays and Sundays in August open. Samuel J. Stark, 2438 North Napa street.
Warwick A. A., first class, traveling July 15 open. W. B. Klein, 1127 West Hunting street.
Wilder B. C., fourteen-eighteen years, traveling. August Season, 1055 Lawrence street.
Tulachewen Reds, first class, traveling. July 15 and 22 open. J. R. Henk, 8519 Smiley street, or phone Lombard 3485.

TRAVELERS ARE HOME

Mitchell Has Open Dates for His Railroad Team
The Pennsylvania Railroad Travelers Club has returned to the city after a tour up the State. They played seven games and dropped only two, having played Pottsville, Shamokin, Mt. Carmel, Shenandoah, Williamsport, Williams Barre and Reading. Manager Mitchell signed up a new battery and an infielder who he secured while up the State which has greatly strengthened his line-up. Mitchell is angling for home grounds in West Philadelphia which he expects to land, and in the meantime would like to hear from first class teams. W. D. Mitchell, 2517 North Twenty-seventh street, Diamond 3194 in the evening.

ESSEX COACH \$1295



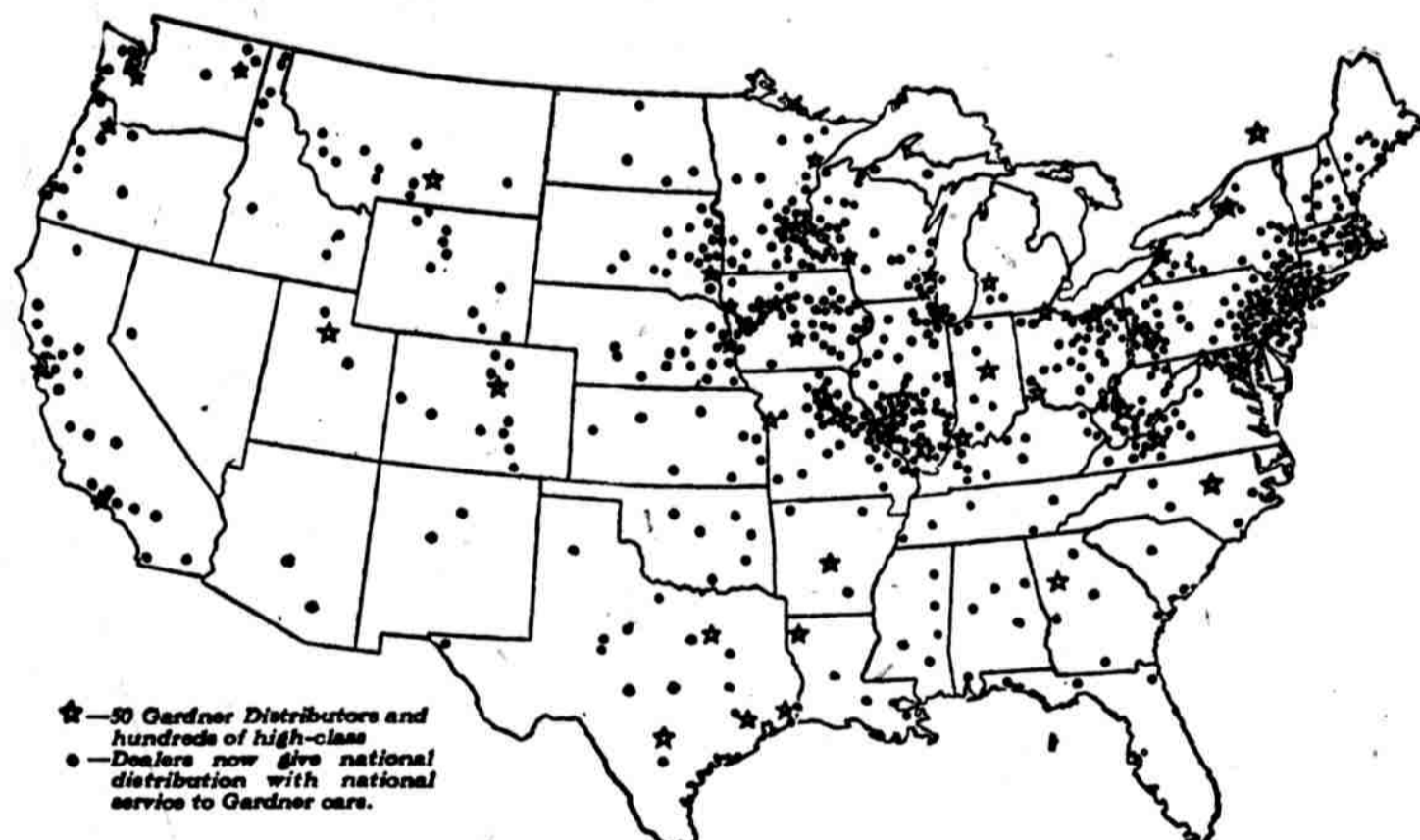
Satisfied Owners Its Greatest Proof

Just ask owners of the Essex Coach how delightfully it rides and drives. How quiet and free from rattles the body stays. How reliably and smoothly the Coach performs every task, day after day, with little need for attention.

We think their enthusiasm will win you too.
Touring, \$1095; Cabriolet, \$1195; Sedan, \$1295
—Freight and Tax Extra—

GOMERY SCHWARTZ MOTOR CAR CO.
SALES ROOM, 128-140 NORTH BROAD—
SERVICE STATION, 2400-14 MARKET ST.

National Distribution means National Service



★—50 Gardner Distributors and hundreds of high-class Dealers now give national distribution with national service to Gardner cars.

Outstanding Value has been the Big Factor in Securing this Nation-Wide Distribution

The rapid and substantial increase in the Gardner selling organization is a direct result of the real value that has been built into the Gardner car. Distributors and dealers everywhere, quick to recognize this unusual value, have eagerly sought representation in the great Gardner selling organization which now completely covers the country. Similar appreciation on the part of the motor-buying public has increased the sale of Gardner cars by leaps and bounds.

As a result of this nation-wide distribution national service is now conveniently available to every Gardner owner. This service is backed by a one-year full-value written guarantee which goes with every Gardner car sold—a guarantee that means something because it has behind it an organization with more than 40 years of successful manufacturing experience, whose exceptionally strong financial position places it among the real leaders in the automotive industry.

The one ambition and effort of the Gardner organization has been to build a quality car—a car that could be offered at a price which would enable the public to realize the biggest possible value for their money. In no other car selling under \$1,000 can you obtain anywhere near all of the noteworthy features embodied in the new Gardner model:

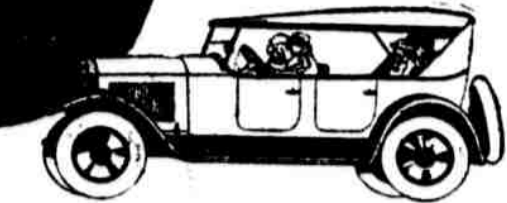
- 32 x 4 Anti-oxid cord tires.
- Westinghouse electrical equipment.
- Bag & Buck clutch.
- Timken and Hyatt roller bearings.
- Forty-eight-pound crankshaft.
- Brown-Lipe spiral bevel differential gears. Driving pinion made integral with driving shaft.
- Mechanical transmission and universal joints.
- Alumite lubricating system.
- Willard threaded rubber battery.
- Gardner special built body with hard maple frame covered with 26-gauge metal sheets.
- Hard-baked enamel finish.

- Heavy headed crown fenders.
- Heavy channelled aluminum body moulding.
- Chase "Dreadnaught" double-texture top material.
- Bright-finish, straight-grain genuine leather upholstery.
- Real curled hair filling in cushions and backs.
- 18-inch steering wheel with aluminum spider.
- Bar radiator cap and motor.
- Newest, sturdy drum-type head lamps.
- Demountable rims with improved lugs attached.
- Added and improved equipment representing at least \$200 greater value to the user—at a price \$400 less than a year ago!

These are but a few of the reasons why the Gardner has so quickly won nation-wide distribution through national recognition as the car of greater value at a lower price.

THE GARDNER MOTOR CO., INC.
ST. LOUIS, U. S. A.

\$895



GARDNER

The Guaranteed Car.

LEXINGTON MOTOR CO. of PA.

W. A. KUSER, President

Lexington Building, 851-53 N. Broad St.

Poplar 7650-7651

Splendid Territory still open for allotment to responsible dealers

America's favorite Beverage

BUDWEISER
Anheuser-Busch, St. Louis

HEALTHFUL
REFRESHING



AMERICA'S FAVORITE

BUDWEISER EVERYWHERE

Now in cartons of One Dozen Bottles

Robinson Supply Co.

Wholesale Distributors 24th and Race Sts.

Spruce 4232
Race 3485