

### -not tired

when you travel on "The Reading"

Whether you are going to the seashore for the day's outing, or are making the seashore-to-city trip daily you will find that "The Reading" will not tire you out. The heaviest of rails, rock ballasted, provide a smooth, even roadbed. Up-to-date equipment of all-steel cars, kept in perfect condition, running on this roadbed spell comfort for the travelers. Try "The Reading." You will be pleased.

Philadelphia & Reading System

Atlantic City Railroad



Pay Nothing Until July 21 on This Portable VICTROLA



\$50 Complete

Then begin to pay as little as

\$1.25 Weekly!

Take it on that week-end trip! Put it in your motorboat! Pack it in your car and listen to its music in the quiet nook you picnic in!

Get your first lot of records from us—that's all we ask!

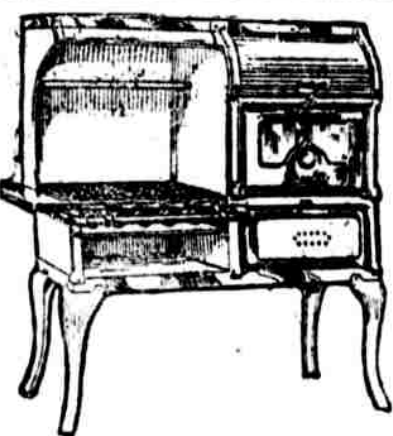
B. B. TODD

1306 ARCH

1623 CHESTNUT

Pianos, Victrolas, Players, Records

SOHMER PIANOS



Quality

White Porcelain Enameled Gas Ranges

Automatic Oven Heat Control if Desired

Roberts & Mander Stove Co. PHILAD'A

Gas Companies and Dealers

Quality Gas Ranges

A full line at our three stores, all attractively priced

PHILADELPHIA GAS RANGE CO. 1026 Arch 263 So. 52nd 590 Broad St., Newark, N. J.



THE best part of a vacation is often the news from home which you read regularly in your favorite newspaper.

Whether you go to the mountains, country or seashore, to a well-known summer resort or some quite out-of-the-way place, you can arrange to have the Evening Public Ledger mailed to you every day. With its unexcelled news and entertaining features, it will add great pleasure at small cost to your summer's outing.

Telephone or send in your summer subscription now, for one, two or three months, the period you will be away, and receive your favorite newspaper regularly with your daily mail.

Summer Subscription Rates Public Ledger (Morning) 60c \$1.20 \$1.40 Public Ledger (Evening) 50c 1.00 1.50 Public Ledger (Sunday) 50c 1.00 1.50

Store Hours, 9 A. M. to 5 P. M.

For Thursday

Gimbels is a Man's Store as complete and thoroughly organized as though we had no other business.

GIMBEL BROTHERS MARKET · CHESTNUT · EIGHTH · NINTH

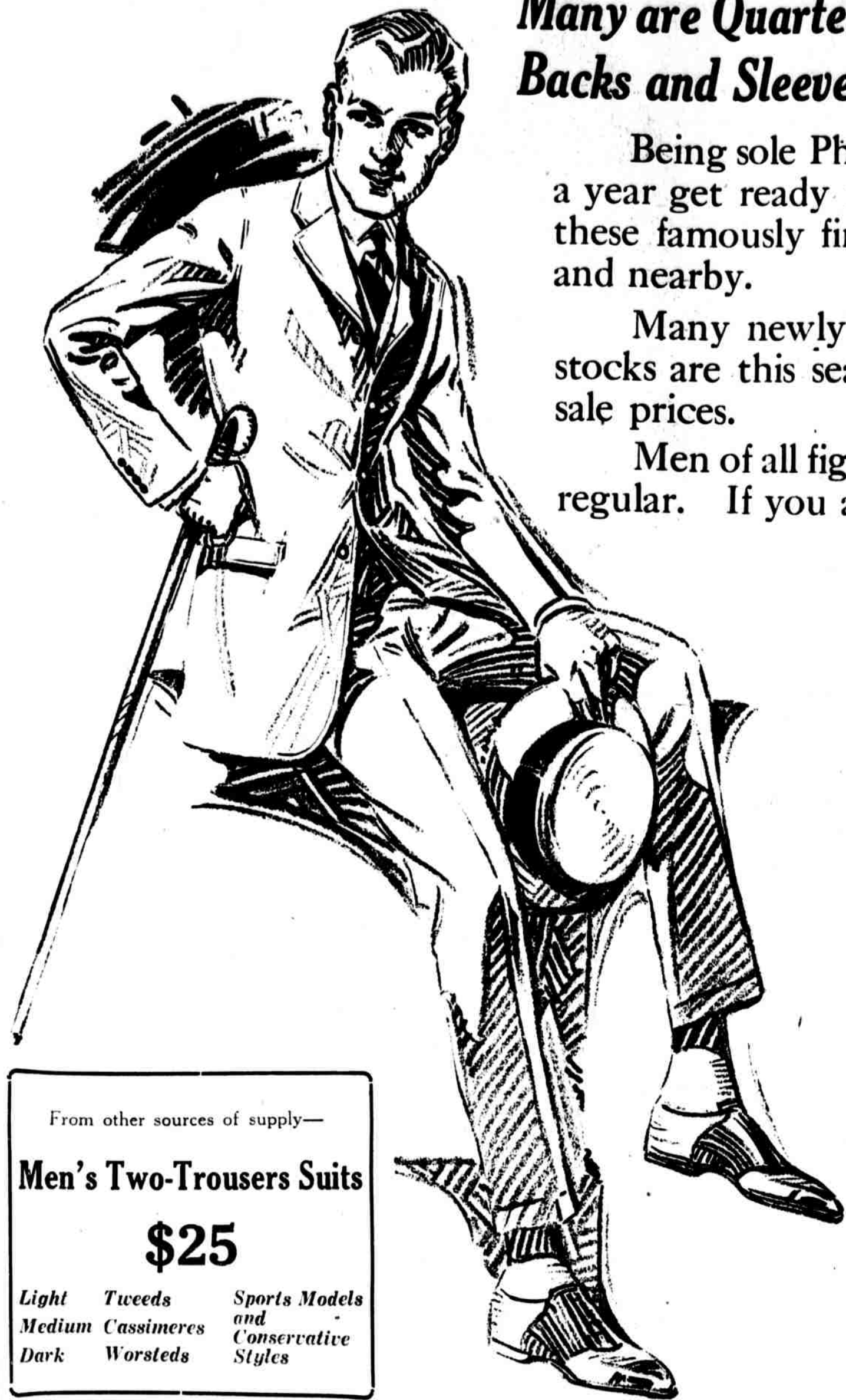
Philadelphia, Wednesday, June 21, 1922

A few years ago the makers of some men's lines thought that small stores were the real specialty stores. Now they try to put their goods here.

For Thursday

# Men's Kuppenheimer and Society Brand SUITS Reduced for an Uncompromising Clearance

## Many are Quarter, Half or Full Silk-Lined—Some Have Vest-Backs and Sleeve-Linings of Silk—Nearly All are Silk-Piped



Being sole Philadelphia distributors it is necessary that we twice a year get ready for the coming season's goods—hence this sale of these famously fine clothes is of interest to every man in the city and nearby.

Many newly fresh lots recently received are included—all the stocks are this season's smartest styles—all at the greatly reduced sale prices.

Men of all figures can be fitted—tall, short, stout, slim, as well as regular. If you are one of those who are hard to fit and particular about being well fitted, Kuppenheimer and Society Brand suits will "turn the ace" for you.

Over three thousand suits in this summer stock adjustment, and you

## Save a Big Average Third On Smartest Young Men's Models and Authentic Conservative Styles

Serges, unfinished worsteds, tweeds, chevots, velours, cassimeres, English Drummond worsteds, Hockanum serges, imported chevots, Belgian worsteds and serges.

\$25 \$37 \$47

For \$35 to \$40 Suits For \$45 to \$50 Suits For \$55 to \$70 Suits

COLORS

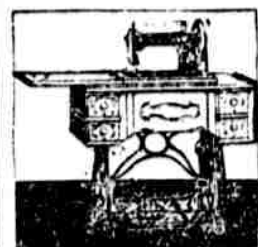
Gray, brown, san-tan, oxford, blue, black, fancy mixtures, herringbone effects, overplaids, checks, pencil stripes.

STYLES

Single-breasted, double-breasted, two-button coats, three-button coats, four-button coats, conservative coats, coats with flap and patch pockets, sports models.

—Gimbels, Second floor, Ninth Street

# Big Stock of Sewing Machines Taken Over from a Dealer in a New England City Unusual Values. Take Advantage of Them While the Quantities Last At Fraction of Original Prices



Sewing machines of well-known makes. Taken over at a fraction of their worth from a dealer in another city.

Good machines—some floor samples, others slightly used—but all carefully gone over by our experts to see that they are in perfect condition.

All marked very much under the regular retail prices—in many instances under the wholesale price of machines of the same grade.

Because quantities in certain styles are limited we are unable to fill mail orders.

White at : : \$25

Domestic : : \$22

Ruby : : : \$17

Domestic : : : \$17

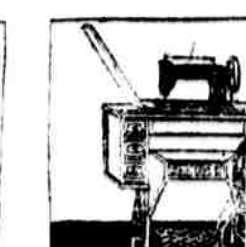
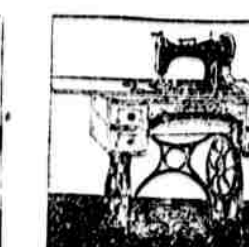
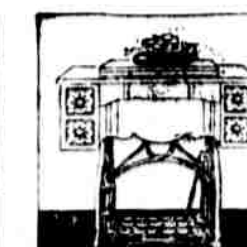
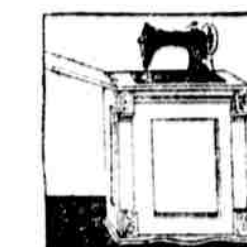
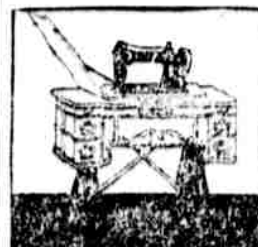
Singer : : : \$25

Wheeler & Wilson : : \$15

Remington : : \$19

WEEKLY TERMS \$1 NO INTEREST NO EXTRAS

## Also in the Sale at Big Reductions Machines from Our Own Stock



"Free" Sewing Machine : : \$25

Keystone Cabinet Machine : : \$25

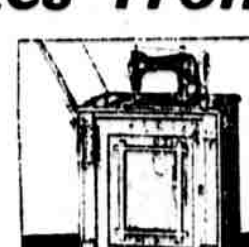
Standard : : \$19

Keystone : : \$19

Singer : : \$29



Portable Electric Machine : : \$39



New Willard Cabinet : : \$47



Domestic Machine : : \$55



Domestic Cabinet : : \$69

NO MAIL ORDERS