

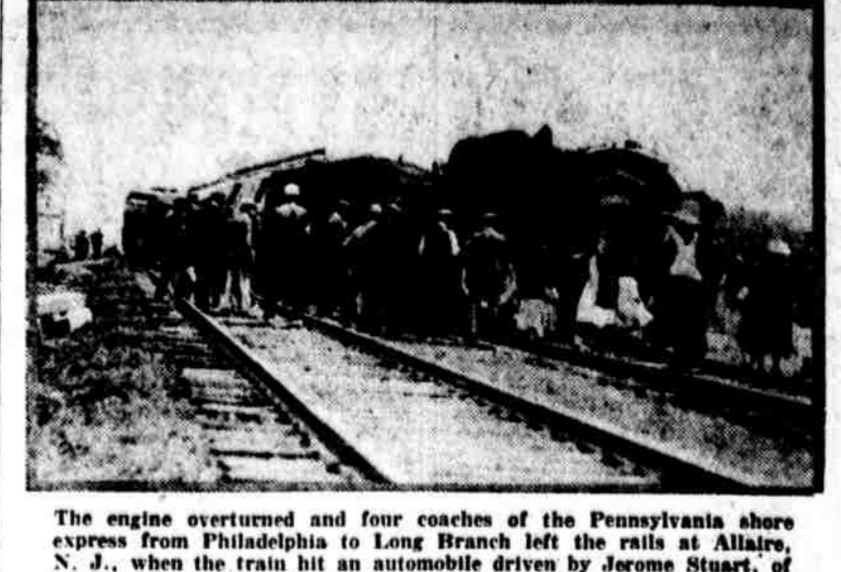
SMALL EUROPEAN POWERS FORCE ACTION AT HAGUE

Sub-Commissions Are Enlarged in Eagerness Over Russia. The Hague, June 17.—(By A. P.)—The pressure of the smaller European countries, especially those adjacent to and having vital political and commercial interests in Russia, yesterday forced the Hague conference to form sub-commissions of thirteen instead of eleven members, as had been planned by the allied leaders.

CARDINAL LOGUE HELD UP 3D TIME

Ulster Constables Insist Upon Searching Baggage of Irish Primate. By the Associated Press. Belfast, June 17.—Cardinal Logue, primate of Ireland, and his conductor, Archbishop O'Donnell, again were held up by members of the Ulster constabulary last night, when their automobile was stopped near Newry by a patrol of "B" spies.

SCENE OF FATAL NEW JERSEY CRASH



The engine overturned and four coaches of the Pennsylvania shore express from Philadelphia to Long Branch left the rails at Allaire, N. J., when the train hit an automobile driven by Jerome Stuart, of Kansas City, a West Point cadet. Stuart was killed. Miss Jeanette Smethurst escaped injury by leaping from the car. Eight passengers were hurt, one seriously.

62 ARE GRADUATED FROM HILL SCHOOL

Dr. F. Parkes Cadman, of Brooklyn, Addresses Large Class at Pottstown Institution. MANY HONORS AWARDED. Pottstown, Pa., June 17.—At the Hill School commencement today sixty-two graduates, one of the largest classes in the history of the institution, were presented with diplomas by the new headmaster, Dr. Boyd Edwards. Previous to this the class exercises, including the planting of the ivy, were held on the west lawn. Dr. F. Parkes Cadman, of Brooklyn, made the address to the graduates. Dr. Edwards awarded special prizes to a number of the boys amid the hearty applause of the other students.

PRINCETON ALUMNI IN ANNUAL PARADE

Graduates From All Parts of World Participate in Commencement "Stunts". CLASS OF '72 IN REUNION. Princeton, N. J., June 17.—The annual alumni parade marks today's activities in connection with Princeton's 175th commencement. It has been the custom for years for all the returned graduates to march over the campus and then proceed to University Field to witness the commencement game with Yale.

RUSH CAMP HAPPY FOR LITTLE GUESTS

500 Under-Nourished Children Will Have Summer of Fresh Air and Good Food. FORMAL EXERCISES IN JULY. Camp Happy is almost ready. Workmen are putting the finishing touches on the new combination mess hall and recreation building at the camp located at Brown's Farms, Torrensedale, where hundreds of under-nourished children each year are built up during the summer months.

62 ARE GRADUATED FROM HILL SCHOOL

Dr. F. Parkes Cadman, of Brooklyn, Addresses Large Class at Pottstown Institution. MANY HONORS AWARDED. Pottstown, Pa., June 17.—At the Hill School commencement today sixty-two graduates, one of the largest classes in the history of the institution, were presented with diplomas by the new headmaster, Dr. Boyd Edwards. Previous to this the class exercises, including the planting of the ivy, were held on the west lawn. Dr. F. Parkes Cadman, of Brooklyn, made the address to the graduates. Dr. Edwards awarded special prizes to a number of the boys amid the hearty applause of the other students.

Let Cuticura Be Your Beauty Doctor. Deep Ointment, Talcum, Soap, etc. For eczema, dandruff, itching, etc. Sold everywhere.

John S. Trower's Sons CATERERS. RESTAURANT. We are extending our daily and Sunday delivery to NORTH PHILADELPHIA and OAK LANE. Fancy Cakes, Ice Cream.

HOWARD KETCHAM SOLE AGENT FOR Compo Board. Kill-Dry Lumber Entire Stock Under Cover. AUTO TRUCK SERVICE IMMEDIATE DELIVERY. Both Phones 3rd & Girard Ave.

We teach COMMERCIAL. Philadelphia Office, 1214 Walnut Street, Dept. 41 MEYER BOTH COLLEGE of Commercial Art.

AR! Meyer Both Company offers you a different training. If you like to draw, develop your talent. Study this practical course—taught by the largest, most widely known Commercial Art Organization in the field with 22 years' success—which each year sells to advertisers over ten thousand commercial drawings. Who else could give you so wide an experience? It's an intensely interesting profession, equally open to both men and women. Home study instruction. Get facts before you enroll in any school. Get our special booklet, "YOUR OPPORTUNITY," for half the cost of mailing—four cents in stamps, or call for it at Philadelphia Office, 1214 Walnut Street, Dept. 41 MEYER BOTH COLLEGE of Commercial Art.

Teacher-Training Course. Peirce School of Business Administration. Philadelphia Office, 1214 Walnut Street, Dept. 41 MEYER BOTH COLLEGE of Commercial Art.

STRAYER'S The Best Business School. Young Men and Boys. PENNINGTON, N. J. BEYOND deciding upon a school for your son, write for "The Pennington Idea." For both, write for "The Pennington Idea." Headmaster, Mr. Francis Harvey Pennington, Box 90, Pennington, New Jersey.

The Gordon-Roney School. For girls—1112 Spruce Street. For boys—1112 Spruce Street. Headmaster and College "Preparatory" Courses. Headmaster and College "Preparatory" Courses.

ALL aboard for Vacationland! Before boarding the train for your favorite summer recreation place, be sure to arrange to have the Evening Public Ledger mailed to you every day. The Evening Public Ledger prints on an average of from one to two more pages of late news and entertaining features than any other Philadelphia evening newspaper.

Summer Subscription Rates. Public Ledger (Home) 60c \$1.20 \$1.80. Public Ledger (Evening) 50c 1.00 1.50. Public Ledger (Sunday) 50c 1.00 1.50. Summer subscriptions may be entered by the week.

BODY PREPARED FOR BURIAL INTERROGATES MOURNERS

Undertaker's Ice Revives "Corpse" as Bereaved Relatives Set Candles Around the Bier. New York, June 17.—Sorrowing members of the family of Mrs. Rebecca Senz, sixty-five, of Lewis street, were assembled about her bed yesterday afternoon. They had been advised medical science could do no more for her; that death was imminent. She had suffered her third paralytic stroke.

PUSH BILL TO HELP U. S. EMPLOYEES

S. Tyson Kinsell Urges Enactment of Reclassification Measure, Now in Senate. In the hope of insuring the passage before the end of the present fiscal year of the Reclassification Bill which recently passed the House of Representatives, and is being considered by the Senate Committee on Appropriations, the Government employees of this city are sending out an eleventh-hour appeal to their friends and supporters to aid in urging Congress to enact this much-needed legislation.

New Jokers Found in Latest Rum Act

Continued from Page One. good Pennsylvania whiskey belonging to distillers in this State was shipped to France just before national prohibition went into effect. The idea was to sell the liquor abroad. The English, the French and other Europeans that might have constituted a market, however, did not like the taste of dry whiskey and wholesalers refused to buy at any price that would allow American mouths were watering.

DISCUSS ALIEN PROPERTY

Policy of Returning That Seized From Germans Before Conference. Washington, June 17.—(By A. P.)—Formulation of the Administration's policy with reference to the return to owners of sequestered German property seized by the Alien Property Custodian during the war was discussed at a conference at the White House today between President Harding, Secretary of War D. H. Hoover, Mr. Miller, Allen Parsons, Chief Counsel, and Attorney General Daugherty.

Gwan-to-Bed Story

Allan Horsie and the Merry-Go-Round. Once upon a time, dear children, there was a cunning little horse on a merry-go-round. He was, in fact, only one of many horses there. Also there were lions and tigers and elephants and automobiles—and the merry-go-round was used to come and ride them all, but they liked this horse the best. His name was Allan. (Joining get off the piano.) WELL, Allan Horsie liked his job very much. He liked the music, although he did wish they would change the tunes often. He liked the children who used to climb on his back and urge him to go faster, although he could have told them they were wasting their time, that he was going as fast as was good for them.

Harding Asked Wood to Remain

Continued from Page One. not to have complied with the President's wishes to assume the duties of the Governor-General and respond to the call for service was out of the question. I had hoped to be able to return, leaving here in August, reaching Philadelphia in September unless the President declined to relieve me, and so agreed with the University. I received, on my return last week, the following telegram: "Wood, Manila: The Administration recognizes that the vital part of the constructive work of the war is now engaged cannot be completed this summer and will be glad if your personal arrangements would enable you to continue it. University inquiring about your return, and the President is anxious to know your attitude. He would like you to continue in Governorship—John W. Wood."

LIONS TRAVELING

"Cubs" Leave for Annual Convention in Arkansas. Members of the "Lions" Club gave a send-off to the delegation going to the Arkansas convention at the Baltimore and Ohio Railroad Station, Twenty-fourth and Chestnut streets, this morning.

OLD BOYS GROWING YOUNG

Charles W. Duke has been interviewing some of the country's big men, who are renewing their youth by turning their time to the service of their fellow men—and getting lots of fun out of it. James Couzens, Mayor of Detroit, is the subject of this article.

SIX PAGES OF COMICS

For young and old alike. Every one enjoys the well-known characters that appear regularly in the comic section. ROTOGRAVURE SECTION. In beautiful tones of brown, pictures the important happenings of the world, prominent people, far distant lands—the only rotogravure section published by any Philadelphia Sunday Newspaper.

THE COMPLETE MAGAZINE SECTION, ROTOGRAVURE SECTION, ALL-STAR COMIC SECTION AND MAGIC INK PICTURE BOOK ARE ALL IN ADDITION TO THE COMPREHENSIVE NEWS SECTIONS OF THE SUNDAY PUBLIC LEDGER.

Order your copy today of your newsdealer "Make It a Habit" SUNDAY PUBLIC LEDGER OF PHILADELPHIA. CYRUS H. K. CURTIS, Publisher.

"More than ever, the World Needs it Now!"

WHAT DOES the industrial, social and religious world, seething with great new forces freed by the war, dangerous in their potentialities unless controlled, need "now more than ever?" The New President of the Chamber of Commerce of the United States JULIUS H. BARNES famed for his work with the Food Administration during the war, has a cheering message for every worker and business man, for every preacher and teacher. Read This Stirring Message in the Magazine Section of the SUNDAY PUBLIC LEDGER June 18.

NEW EVIDENCE ON EVOLUTION

Henry Fairfield Osborn, leading authority on the Antiquity of Man, says that the United States can boast of the earth's "oldest inhabitant," who lived half a million years ago.

POURING HOUSES INTO FRANCE

Telling how American constructive genius is rapidly restoring the ravages of the Hun, by literally pouring cottages from a concrete mixer. Told by a man who knows, Mr. J. Olin Howe.

CULLEN CAIN AT WEST POINT

This interpreter of the American spirit back of sports visits West Point to write of the grand old traditions of Grant, Sherman and Lee that still fire the cadets at America's great military academy.

ALL-STAR COMIC SECTION AND MAGIC INK PICTURE BOOK ARE ALL IN ADDITION TO THE COMPREHENSIVE NEWS SECTIONS OF THE SUNDAY PUBLIC LEDGER.

Order your copy today of your newsdealer "Make It a Habit" SUNDAY PUBLIC LEDGER OF PHILADELPHIA. CYRUS H. K. CURTIS, Publisher.

NEW SEA LINE TO N. Y.

First Steamer Will Start Trip to Philadelphia Tomorrow. The first steamer of the New York-Philadelphia Line, touching at Cape May, is due to leave New York tomorrow from Pier 20, East River. Two more steamships will be added July 1, it is announced.

NEW SEA LINE TO N. Y.

These boats will stop at Cape May, both going and returning, and will carry both passengers and freight. At Cape May a new pier at Schellenger's Landing will be utilized. The new line will take up its headquarters here at Pier 5, North Wharves. The first vessel to make the trip will be the steamship Maple.

NEW SEA LINE TO N. Y.

These boats will stop at Cape May, both going and returning, and will carry both passengers and freight. At Cape May a new pier at Schellenger's Landing will be utilized. The new line will take up its headquarters here at Pier 5, North Wharves. The first vessel to make the trip will be the steamship Maple.

NEW SEA LINE TO N. Y.

These boats will stop at Cape May, both going and returning, and will carry both passengers and freight. At Cape May a new pier at Schellenger's Landing will be utilized. The new line will take up its headquarters here at Pier 5, North Wharves. The first vessel to make the trip will be the steamship Maple.

NEW SEA LINE TO N. Y.

These boats will stop at Cape May, both going and returning, and will carry both passengers and freight. At Cape May a new pier at Schellenger's Landing will be utilized. The new line will take up its headquarters here at Pier 5, North Wharves. The first vessel to make the trip will be the steamship Maple.

NEW SEA LINE TO N. Y.

These boats will stop at Cape May, both going and returning, and will carry both passengers and freight. At Cape May a new pier at Schellenger's Landing will be utilized. The new line will take up its headquarters here at Pier 5, North Wharves. The first vessel to make the trip will be the steamship Maple.

NEW SEA LINE TO N. Y.

These boats will stop at Cape May, both going and returning, and will carry both passengers and freight. At Cape May a new pier at Schellenger's Landing will be utilized. The new line will take up its headquarters here at Pier 5, North Wharves. The first vessel to make the trip will be the steamship Maple.

NEW SEA LINE TO N. Y.

These boats will stop at Cape May, both going and returning, and will carry both passengers and freight. At Cape May a new pier at Schellenger's Landing will be utilized. The new line will take up its headquarters here at Pier 5, North Wharves. The first vessel to make the trip will be the steamship Maple.

NEW SEA LINE TO N. Y.

These boats will stop at Cape May, both going and returning, and will carry both passengers and freight. At Cape May a new pier at Schellenger's Landing will be utilized. The new line will take up its headquarters here at Pier 5, North Wharves. The first vessel to make the trip will be the steamship Maple.

NEW SEA LINE TO N. Y.

These boats will stop at Cape May, both going and returning, and will carry both passengers and freight. At Cape May a new pier at Schellenger's Landing will be utilized. The new line will take up its headquarters here at Pier 5, North Wharves. The first vessel to make the trip will be the steamship Maple.

NEW SEA LINE TO N. Y.

These boats will stop at Cape May, both going and returning, and will carry both passengers and freight. At Cape May a new pier at Schellenger's Landing will be utilized. The new line will take up its headquarters here at Pier 5, North Wharves. The first vessel to make the trip will be the steamship Maple.

NEW SEA LINE TO N. Y.

These boats will stop at Cape May, both going and returning, and will carry both passengers and freight. At Cape May a new pier at Schellenger's Landing will be utilized. The new line will take up its headquarters here at Pier 5, North Wharves. The first vessel to make the trip will be the steamship Maple.

NEW SEA LINE TO N. Y.

These boats will stop at Cape May, both going and returning, and will carry both passengers and freight. At Cape May a new pier at Schellenger's Landing will be utilized. The new line will take up its headquarters here at Pier 5, North Wharves. The first vessel to make the trip will be the steamship Maple.

NEW SEA LINE TO N. Y.

These boats will stop at Cape May, both going and returning, and will carry both passengers and freight. At Cape May a new pier at Schellenger's Landing will be utilized. The new line will take up its headquarters here at Pier 5, North Wharves. The first vessel to make the trip will be the steamship Maple.

NEW SEA LINE TO N. Y.

These boats will stop at Cape May, both going and returning, and will carry both passengers and freight. At Cape May a new pier at Schellenger's Landing will be utilized. The new line will take up its headquarters here at Pier 5, North Wharves. The first vessel to make the trip will be the steamship Maple.

NEW SEA LINE TO N. Y.

These boats will stop at Cape May, both going and returning, and will carry both passengers and freight. At Cape May a new pier at Schellenger's Landing will be utilized. The new line will take up its headquarters here at Pier 5, North Wharves. The first vessel to make the trip will be the steamship Maple.

NEW SEA LINE TO N. Y.

These boats will stop at Cape May, both going and returning, and will carry both passengers and freight. At Cape May a new pier at Schellenger's Landing will be utilized. The new line will take up its headquarters here at Pier 5, North Wharves. The first vessel to make the trip will be the steamship Maple.

NEW SEA LINE TO N. Y.

These boats will stop at Cape May, both going and returning, and will carry both passengers and freight. At Cape May a new pier at Schellenger's Landing will be utilized. The new line will take up its headquarters here at Pier 5, North Wharves. The first vessel to make the trip will be the steamship Maple.