

PLAN TO SILENCE FOREIGN CRITICS

Diplomatic Opposition to Pending U. S. Legislation Must Stop, Harding Decides

GEDDES AND HUGHES MEET

Washington, June 7.—The Harding Administration is determined to stop foreign diplomatic representations from publicly opposing pending tariff and ship subsidy legislation, but there is no indication that charges of Senator Watson, of Indiana, involving the British and Italian Ambassadors, will be made the basis of an international incident.

The fact that Mr. Watson, an Administration leader in the Senate, voiced the Government's displeasure of the manner in which Sir Auckland Geddes, Ambassador Roland Ricci and several British and French consular agents have discussed the proposed tariff is regarded as a sufficient "tip" to diplomats to refrain from further public remarks on the subject.

If Senator Watson's speech has the desired effect the matter will go on further, and there was every indication from the news reported by Secretary of State Hughes following his meeting with the Administration that it had been obtained.

The British Ambassador called at the State Department in the afternoon and conferred for some time with Secretary Hughes. Neither Sir Auckland nor Mr. Hughes would discuss the conference. It is understood the Italian Ambassador also will confer with Secretary Hughes probably today, and the incident, if the plans of the Administration do not miscarry, will be closed.

Sir Auckland May Not Return

Senator Watson's reference to Ambassador Geddes' Chicago speech, in which the British referred to the proposed tariff as a "barrier" to trade between the United States and Great Britain, served yesterday to revive the story that Sir Auckland would not return to Washington following his announced trip to England this summer. Nothing official, however, was obtainable at the British Embassy beyond confirmation of the Ambassador's report that the Ambassador expected to sail from the United States shortly on several months' leave.

Information used by Senator Watson in his address, it is understood, was compiled by the Republican National Committee, and has been placed in the hands of other Republican leaders, including the Senator, chairman of the Foreign Relations Committee. Apparently, the Administration's move was designed to shut off further discussion on the part of foreign representatives by simply calling attention to the American public to the fact that their opposition was taking on the aspect of propaganda.

Charges Erroneous Report

The British Ambassador feels that his recent public reference to the American merchant marine and other matters referred to by Senator Watson, of Indiana, in his tariff speech in the Senate was erroneously described, and has shown to Secretary Hughes a stenographic copy of his address in Chicago.

The reference to the merchant marine according to the stenographic report, was as follows:

"Another large part of the British purchases in this country was paid for through credits established on account of services rendered by the British merchant marine, by British insurance companies, by education given in Britain and in other less important places. There is a great change, again as a result of the war, now taking place in connection with the rendering of those services. You, in your own interests, are building up a great merchant marine. It is, of course, your right to do so; but let us remember that when it comes to the question of the balance of trade between the countries, that means there will be diminished credits—dollar credits—for the British to purchase your goods within this country."

BISHOPS PROTEST TO LENINE

Episcopal Prelates Denounce Imprisonment of Russian Patriarch

New York, June 7.—The Episcopal Church of the United States yesterday cabled a protest to Premier Lenine, of the Russian Soviet Government, against the imprisonment of Patriarch Tikhon, head of the Russian Church.

The message, signed by the Right Rev. Daniel Sizer, Tuttle, presiding bishop, the Right Rev. Thomas F. Gallor, president of the National Council, and the Right Rev. William T. Manning, Bishop of New York, read:

"Episcopal Church of United States of America most vigorously protests against attack on whole Russian Church in person of Patriarch Tikhon. The Christian conscience of America cannot tolerate such wrong."

Protests against his detention have been made by Pope Pius XI, the Archbishop of Canterbury and representatives of churchmen in several countries.

SALARY BILL PASSES HOUSE

Byrnes Protests Amounts Provided Ship Board Are Outrageous

Washington, June 7.—This House yesterday finally adopted the conference report on the Independent Offices Appropriation Bill, with its contested provision for payment of salaries to officers of the Shipping Board. Repealed four times, it came back in slightly modified form and was adopted by a vote of 140 to 121. The bill now goes to the President.

The salary section over which the long fight was made provided that no officer of the board shall be paid more than \$11,000 a year, except six permitted to receive not to exceed \$25,000 each and two not to exceed \$20,000 each annually.

Representative Byrnes, of Tennessee, ranking Democrat of the Appropriations Committee, opposed the measure to the last, declaring it "outrageous" that such salaries should be paid when the work of the board at this time "did not demand it."

Three Killed in Train Wreck

Washington, N. Y., June 7.—Three persons were killed and three injured when a Pacific express train No. 7 on the Erie Railroad hit a truck at the Hingham station. The dead were buried in the hospital for the

Store Hours, 9 A. M. to 5:30 P. M.

For Thursday The Subway Store offers dependability and real economy. No "cheap" goods to bait the public.

GIMBEL BROTHERS

MARKET · CHESTNUT 14 · EIGHTH · NINTH

Philadelphia, Wednesday, June 7, 1922
But inexpensive goods—thoroughly guaranteed. The one Gimbel system of good service.

For Thursday

Tomorrow—Subway Store Day—A Money-Saving Event

1000 Women's and Misses' \$12 to \$15 SILK DRESSES at \$6.75

600 Women's and Misses' \$12.75 to \$19.75 Tweed Suits at \$6.75

All good sports styles. All splendid tweeds. And all the leading colors—rose, blue, tan, orchid, apricot. Misses' sizes 16s and 18s. Women's sizes 36 to 44.

Separate Skirts—Two for \$1

Tweed-printed cotton—alike on both sides. All sizes. And a good, roomy cut.

1200 Women's Lovely Glove-Silk Vests, \$1.38—\$2.68

These are slightly irregular, and sold only at this price for Subway Store Day. \$1.38.

2400 Children's Fancy Colored Socks, 28c a pair

Fiber-plated and Silk. Would sell at 50c if "first" grade; special tomorrow at 28c a pair.

Men's Cool Palm Beach Suits Brand New and Perfect—\$12.50

Plain colors and new two-toned combinations. All fast colors; very well made. Sizes 33 to 50.

Men's and Young Men's Trousers \$6.50 and \$7.50 Values—\$3.75

All-worsted blue serges, cassimeres and tweeds. Every pair very well made.

Big "Dollar Sale" of House Dresses, Bungalow Aprons, Muslin Underwear, Silk Petticoats and Middies

—Half Price the Rule

Two Middies for \$1
\$1.65 and \$2 Percale House Dresses for \$1—The three styles variously in stripes, with pique trimmings, checks with chambray trimming, and two-tone percale with organdie trimming and scalloped skirt as pictured—all slip-on models. Sizes 36 to 44 in each.

\$1.95 Silk Petticoats at \$1—silk jersey. Only two hundred—be quick!

Two Middies for \$1—Value \$1 and \$1.25 each. Mostly rose and blue. Trimmed with pretty stitches. Button on shoulders. All sizes. Ten thousand—plenty for mail orders.

Two Envelope Chemises for \$1—Value 85c and \$1 each. White. Embroidery- and lace-trimmed.

Two Nightgowns for \$1—White. Embroidery-trimmed. Values, 85c and \$1.

Two Pairs Bloomers for \$1—Pink. Values 85c and \$1.

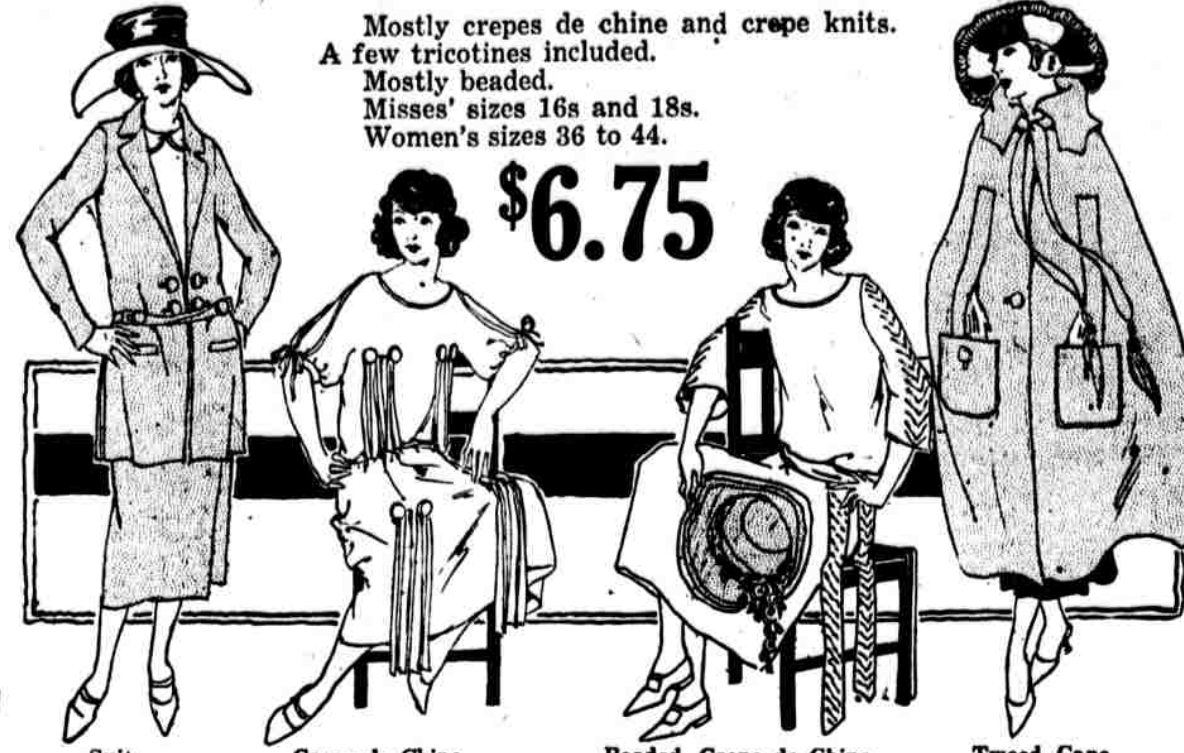
Two Bungalow Aprons for \$1—Values 85c and \$1. Percales. Light and dark colors.

Fiber-Silk Sweaters at \$2.85

Values \$3.85 and \$4.85. Broken sizes—styles and colors. But both tuxedo and slip-over styles in the lot.

Famous G. B. Corsets } 79c

A \$1.50 Value. For slender and average figures; pink and white coutil in medium bust, sizes 20 to 30. Subway Store Day priced at 79c.



Suit \$6.75, Crepe de Chine Dress, \$6.75, Beaded Crepe de Chine Dress, \$6.75, Tweed Cape \$3.75

1200 Bleached Seamless Sheets \$1

81x90 inches. Heavy grade sheeting. Not enough for phone or mail orders.

81-inch Unbleached Sheeting, 2 1/2 yds. for \$1

Regular 66c grade. This length makes a fine grade sheet, 81x90 inches.

50c Bolster Cases, 3 for \$1

Dependable grade. 42x72 inches. No mail or phone orders.

500 Crochet Bedspreads } \$1

Go to at... Regularly \$1.50. Double-bed size. No mail or phone orders. For tomorrow only, at \$1.

Forty-cent Quality Dress Batiste 25c A Yard

A light ground with attractive figures in summery colors. All full pieces and 38 inches wide. Some slight imperfections account for the low price—25c a yard.

Boys' Wash Suits \$1.50 } 69c

Oliver Twist and middie models in peggy cloth, chambray and madras. Fast colors, full cut and well made. All sizes—3 to 8 years.

All-Rubber Bathing Caps 18c

2000 in the lot—an overproduction of a well-known maker. Worth from 35c to \$1, tomorrow at 18c.

Sale of Girls' Wonderful Gingham and Organdie Dresses at \$1.15 Values \$2 to \$3



\$1.15, \$1.15, \$1.15

Fifty styles to choose from! And 6- to 14-year sizes in each!
Amoskeag ginghams, Peggy cloth and good, substantial chambrays.
Embroidered styles. Tunic styles. Slashed styles with smart white binding. Pique-trimmed styles. Hand-crocheted edges. Pearl buttons. Peter Pan styles.
Plenty of pretty plaids, but even more of the popular checks.

\$1.85 All-Silk Crepe de Chine at \$1.10

Heavy lustrous quality, in a range of beautiful light and dark colors—about fifty. 39 inches wide.

\$1.38 for \$2 Plain and Changeable Taffetas, full range of light and dark colors.

\$1.25 for \$2 All-silk Satin Charmeuse, heavy high lustrous sport satin in a full range of colors.

3000 Pairs of Men's Tan Low Shoes } \$3.45

Four Styles. Goodyear Welts, at

5700 Pairs of Women's Summer Shoes \$1.85

Every Pair Brand-New and Perfect

Mostly All the Famous Rice & Hutchins Make



Worth More Than Double

A special shoe event for tomorrow's selling. Strap pumps. Brogue oxfords. Patents, Russia calfs, kidskins and plenty of white shoes in the lot.

Women's Slightly Marred Shoes, \$1

fews of a kind

Children's Shoes—sandals, play shoes, pumps—all solid and fit for hard usage \$1.10

500 Women's and Misses' \$7.50 to \$10 Tweed Capes at \$3.75

Popular circular cut—good and long; with deep slits for armholes, and big patch pockets. Graceful collar; tasseled tie-ends; big buttons.

Knit Bathing Tights—Two for \$1

Black—all sizes.

Bathing Suits—Special at \$2

Wool knit and cotton surf-satins.

1000 Window Shades Two for \$1

36x72 inches. Oil opaque shades in light green, white or light tan. Complete with all fixtures. "Mill run," at two for the regular price of one. Two for \$1.

Women's Gloves 39c \$1 and \$1.50 Values

An odd lot of kid and fabric gloves in practically every glove color. Some slightly mended. Broken sizes, 38c.

Fiber Silk Sports Scarfs at 89c

60 inches in length and nicely finished with silk fringe. Henna, black, navy, copen and rose.

31-pc. Gold Lace Border Dinner Sets at \$2.95

A Clear Saving of Four Dollars



These are first quality. Regular value being \$6.95—saving four dollars on every set.

864 Women's \$1 to \$1.95 Hand Bags at 74c

A "sample line" sacrificed by the maker to clear his shelves. Purse and mirror in each bag. Spring colors and various leathers—beaver, calf, cobra, spider and so forth. Special tomorrow at 74c.

Hemstitched, Mercerized Table Cloths—78c

Regularly \$1. Satin finish, assorted patterns; 54 x 54 inches, at 78c.

1200 9x12 ft. Japanese Grass Rugs at \$5.50

Worth Close to Double

A large and varied choice of novelty effects. All new fresh double warp goods. Strongly bound and finished. Also other sizes and prices as follows:

8x10 ft. \$5	6x9 ft. \$3.25	4 1/2 x 7 1/2 ft. \$2.25	3x6 ft. \$1
	27x54 in. 65c	18x36 in. 30c	

100 Willow Grass Rugs, all figured patterns, at less than half. 54x90 in. Value \$7. \$3

2500 sq. yds. Inlaid Linoleum in useful remnant lengths. Many pieces of same pattern to match, of the \$2 to \$3 grades, at 75c and 85c sq. yd.

\$17.50 Tapestry Brussels Rugs 9x12 feet, half price at—\$8.75