

BUSINESS HOURS
9 to 5.30

STRAWBRIDGE & CLOTHIER
Anniversary Sale

IMPORTANT NEWS FOR TO-MORROW

To-morrow! A Sale of 10,000 Women's New Dresses



To-morrow morning, Thursday, June 1, sees the beginning of the Strawbridge & Clothier Anniversary Sale—the greatest value-giving event of the year.

The little Store of Strawbridge & Clothier of 1868 has become the great Store of Strawbridge & Clothier of 1922—and the reins of this great business are still in the hands of the sons of those men who founded this organization just 54 years ago.

THE Seal of Confidence, so firmly rooted in the beginning of this business, is still behind every transaction. It is winning evidence of the rightness of the principles upon which this business was built and through which this business has prospered.

Being merchants, the best and most fitting way for us to celebrate an anniversary is to offer you the merchandise you want at prices very, very much below usual.

Hence, these Anniversary values. The few listed here are but typical of thousands of others throughout this Store. We suggest you shop early in the day, for such important values as these cannot help but get very quick response.

The Sale Starts To-morrow!

Men's Suits, \$24.50
With Extra Trousers
Indeed, Great Value!

Suits for men and young men with two pairs of trousers—and only \$24.50. Made of all-wool cassimeres, herringbones and tweeds, in both sports and conservative models. Practically every size including some for youths. A remarkable event for a remarkable Sale.

Straw Hats, \$1.65
Men's Imported Hats
Lower in Price

English Straw Hats in Sennit weave. Numerous wanted shapes, all unusual value.

Men's Shirts, \$1.65
Plenty in All-White
All Half Price

A great event for men—5,000 Shirts, over 200 dozen, at half the regular price. Excellent value, every one, made to our own standard, cut full, sewed well, a good length. Of corded woven-stripe and plain woven-stripe madras in a wealth of colorings.

Many all-white Shirts of madras and chevot. Really extraordinary Sale-value.

Men's Neckties
Smart Four-in-Hands
Exactly Half Price—25c

A great collection, a great quantity, a great value! Stripes and mixed effects in numerous patterns and all desirable colorings. Men won't want just one, they will buy at least half-a-dozen.

Men's Shoes, \$7.45
Introducing Our Fine "Wickham" Shoes for Men, Special

Our Wickham Shoes, exceptional in style and value. Oxfords of tan, gun-metal and chestnut brown calfskin and black glazed kidskin in smart new styles.

Millinery at \$4.50
Three Hundred Trimmed
Georgette Hats—Special

Lovely, light, summery Hats of Crepe Georgette, in white, sand, pearl gray and other desirable light shades; trimmed with ribbons, flowers or self material. An excellent value.

Silk Suits, \$32.50
Women's Silk Suits
Much Under Price

Of silk crepe in black and navy blue, made with the new longer coats, in slender, straight-line styles with narrow belt, some with slashed seams. Peau de egne linings.

Coats and Capes
A Special Purchase at \$10.75
Many Worth About Double

An extraordinary lot of Women's Coats and Capes of tan wool cloaking, some plaid-back, others lined throughout. These are all in the smart plain, practical styles that women like for summer traveling and outings.

Silk Stockings, 90c
Seamed Backs—
Exceptional Value

Such stockings are rare at this price, of pure silk with cotton tops and double soles, seamed backs and high spliced heels. Made on a pigeon spring needle machine. Sizes 8½ to 10; in black, white, cordovan, Russia calf, African brown, polo gray, new suede and sand shades.

All Carefully Arranged for Easy Inspection



This and Six Other Models \$7.50 Tissue

This and Two Other Models \$8.75 Voile

This and Twelve Other Models \$9.75 Gingham

This and Twelve Other Models \$9.75 Dotted Voile

This and Twelve Other Models \$9.75 Tissue

This and One Other Model \$10.50 Japanese Silk

This and Four Other Models \$12.50 Dotted Swiss

This and Four Other Models \$12.50 Voile

This and Three Other Models \$13.50 Voile



This and Three Other Models \$11.75 Figured Dimity

This and Three Other Models \$15.00 Voile



This and One Other Model \$21.75 Foulard

Silk and Cotton Dresses
Nearly 100 Styles at Wonderful Savings

Nearly one hundred different new models, in the most fashionable silks and cottons of the season, tailored and elaborate effects, light and dark shades, regular and extra sizes—a wonderfully satisfactory assortment from every point of view, and the best-looking lot of Dresses we have ever known to be gathered under one roof at one time. All selected with the same care and discrimination used in the buying of merchandise for our regular stock, and every Dress fully up to our regular high standard—properly sized, generously proportioned—and the styles! The styles are a delight to the eye!

Tissue and Fancy Voile Dresses \$7.50

Dainty tissues and plaid and figured voiles, with lace trimmings, and lace or embroidered collars and vests. White, light blue, navy blue, pink, brown and tan.

Fine Figured Voile Frocks \$8.75

Navy blue, Copenhagen blue, brown and black, in assorted patterns: plaited or full, drop-hem skirts; vests and sashes, or white collars and pearl buttons.

Linens, Ginghams, Voiles, Tissues \$9.75

Normandy and printed voiles, French linen, fine tissue and imported gingham. Collars and cuffs of embroidered batiste, lace, organdie and linen. Navy blue, black, red, green, lavender, brown, pink, peach and Copenhagen blue.

Cool Japanese Silk Dresses \$10.50

In black and navy blue. Tunic skirt, three-quarter-length sleeves and narrow tie belt; with buttons and narrow pinkings.

Dimity and Voile Dresses \$13.50

Cord, striped woven tissue and dotted white voile and dimity; peach, green, blue, lavender, gray, honeysuckle and black. Tunic and straight-line models; some trimmed in plain materials.

Extra-size Dresses, of printed and Normandy voiles, in black, white, brown and blue figured in white, and in white with navy blue designs. Flying-panel, plaited-panel, tucked-panel and tunic models.

Gingham and Voile Dresses \$12.50

Voiles in white, navy blue, black, brown and Copenhagen blue; embroidered ginghams in red, green, lavender, brown, navy blue and black. Blouse and straight-line models, with plaited, draped or tucked skirts. Regular and extra sizes.

Fine Foulard Silk Dresses \$14.50

Foulard Silk Frocks in black, navy blue, brown and Copenhagen blue figured in white, and navy blue with tan figures. Plaited and plain divided tunics; one model bound with white ribbon.

Ginghams and Imported Swiss \$17.50

Imported dotted Swiss and fine ginghams; plain and trimmed models, with and without sashes; dainty collars and vests. One exceptionally smart voile model in extra sizes.

Gingham, Tissue, Voile, Dimity \$15.00

Fine Gingham Dresses in navy blue, red, brown, lavender and green, with applied border of white ratine. And Dresses of tissue, dimity and voile in navy blue, black, heliotrope and green.

Lovely Dresses of Canton Crepe \$19.75

Black, white, navy blue, beige, caramel, brown and gray. Long-waisted wash model, with plaited skirt, three-quarter-length sleeves and novelty brand trimmings.

Fine Voile and Dimity Dresses \$11.75

Dark colored voiles, figured dimity, and white dotted voiles; black, green, navy blue, lavender, brown, Copenhagen blue and white. Regular and extra sizes.

Fine Frocks of Crepe de Chine \$16.50

Crepe de Chine Dresses in black, navy blue and white, with plaited-panel and side-draped skirts; flowing sleeves or flowing cuffs; some beaded in color.

Fine Frocks of Imported Swiss \$23.75

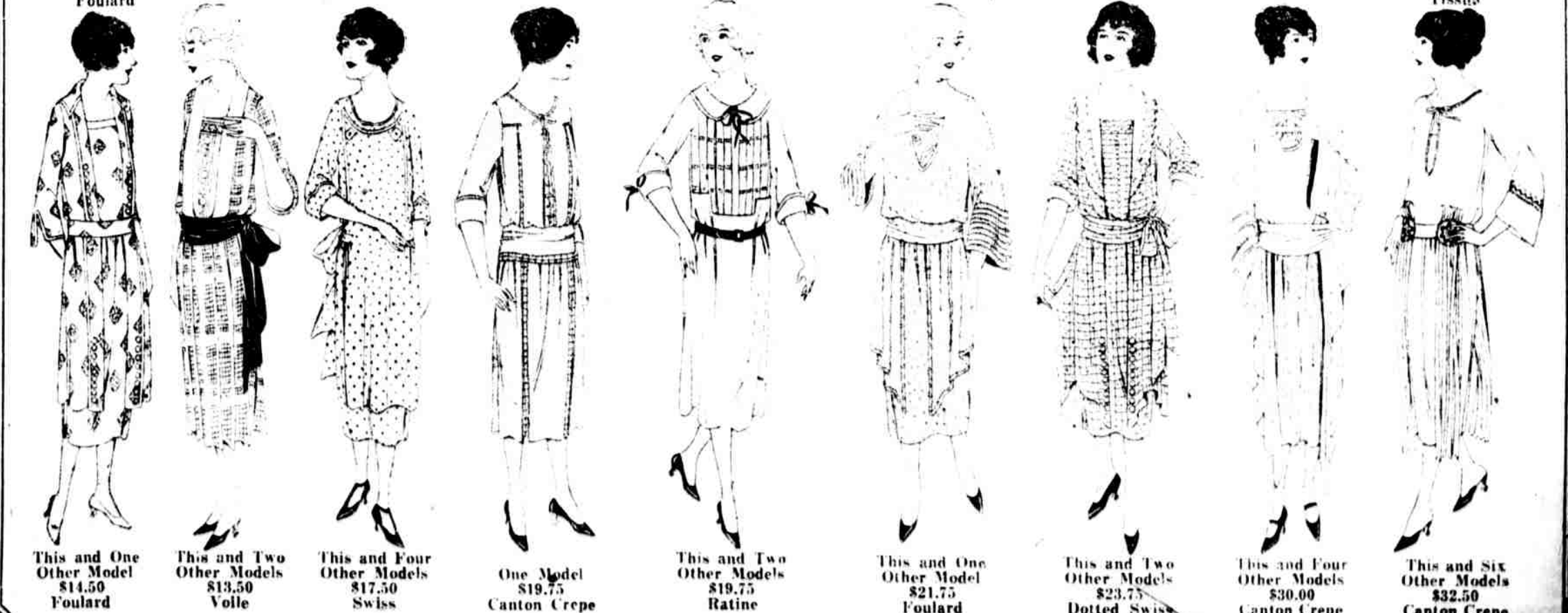
Novelty and dotted effects, in navy blue, brown, augetine and black, made with wide sashes and prettily trimmed in white.

Dresses of Fine Canton Crepe \$30.00

Black, camel, navy blue, gray, pearl-white and white. Draped, loose-fitting, straight-line and tunic styles; plain-tailored, beaded and embroidered.

Canton and Flat Crepes \$32.50

Plaited, draped and panel effects, with novel collars and sashes. Black, navy blue, pearl-white, camel, beige, gray, beige, brown, white and Minerva.



This and One Other Model \$14.50 Foulard

This and Two Other Models \$13.50 Voile

This and Four Other Models \$17.50 Swiss

One Model \$19.75 Canton Crepe

This and Two Other Models \$19.75 Ratine

This and One Other Model \$21.75 Foulard

This and Two Other Models \$23.75 Dotted Swiss

This and Four Other Models \$30.00 Canton Crepe

This and Six Other Models \$32.50 Canton Crepe