



Paris Office



Wholesale and Mail Order Building



London Office



Berlin Office



Part of the Background Behind Philadelphia's Own Store

BEHIND Strawbridge & Clothier, Philadelphia's own Store, are fifty-four years of store service — fifty-four years of public confidence.

To make this service worthy of its symbol—the Seal of Confidence—there has been builded a worthy background for serving.

Pictured here are a few of the buildings—many of them unknown to you who shop here—buildings which house part of the service and serving organizations of this Store.

The scope of Philadelphia's own Store is the scope of trade itself. From the merchandise centres of the world are goods brought here for you. With all the perfected methods, equipment and skill of modern merchandising are these goods distributed.

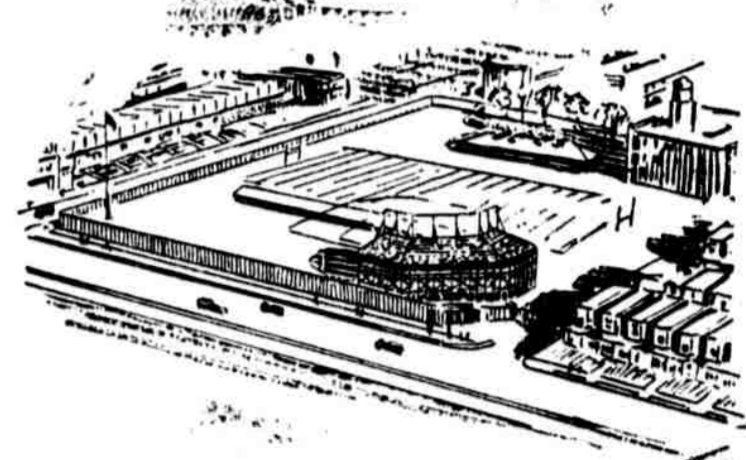
Nor does our duty to you, Store customers, stop with the gathering, selling and distributing of goods. Our obligations as merchants have not been fulfilled until you have been completely satisfied with the goods with which we have served you.



West Philadelphia Distributing Station



North Philadelphia Distributing Station



Strawbridge & Clothier Athletic Field

The Sale Celebrating the 54th Anniversary of the Founding of Strawbridge & Clothier Begins Thursday

